

# Midea WINDOW TYPE ROOM AIR CONDITIONER

Please read this manual carefully before operating your unit and retain for future reference.

## Read This Manual

Inside you'll find many helpful hints on how to use and maintain your air conditioner properly. Just a little preventive care on your part can save you a great deal of time and money over the life of your air conditioner. You'll find many answers to common problems in the troubleshooting tips - you should be able to fix most of them quickly before calling service. These instructions may not cover every possible condition of use, so common sense and attention to safety is required when installing, operating and maintaining this product.

## CAUTION

- For support, please contact a service center.
- This appliance is not intended for use by people (including children) with reduced physical, sensory or mental capabilities or lack of experience and knowledge, unless they have been given supervision or instruction concerning use of the appliance by a person responsible for their safety.
- Children should be supervised to ensure that they do not play with the air conditioner.
- The appliance shall be installed in accordance with national wiring regulations.
- Do not operate your air conditioner in a humid room such as a bathroom or laundry room.

## SAFETY PRECAUTIONS

### Must read the warning message.

Read Safety Precautions Before Operation and Installation. To prevent death or injury to the user or other people and property damage, the following instructions must be followed.

Incorrect operation due to ignoring of instructions may cause death, harm or damage.

### Explanation of Symbols

**WARNING**  
This symbol indicates the possibility of personnel injury or loss of life.

**CAUTION**  
This symbol indicates the possibility of property damage or serious consequences.

- Do not operate a unit that it has been dropped or damaged.
- The appliance with electric heater shall have at least 1 meter space to the combustible materials.
- All wiring must be performed strictly in accordance with the wiring diagram located inside of the unit.
- The unit's circuit board(PCB) is designed with a fuse to provide overcurrent protection. The specifications of the fuse are printed on the circuit board, such as: T 3.15A/250V, etc.
- When the water drainage function is not in use, keep the upper and the lower drain plug firmly to the unit to get rid of choking. When the drain plug is not in use, keep it carefully to prevent children from choking.

### CAUTION

This appliance is not intended for use by persons (including children) with reduced physical, sensory or mental capabilities or lack of experience and knowledge, unless they have been given supervision or instruction concerning use of the appliance by a person responsible for their safety. Children should be supervised to ensure that they do not play with the appliance. Children must be supervised around the unit at all times.

- If the supply cord is damaged, it must be replaced by the manufacturer, its service agent or similarly qualified persons in order to avoid a hazard.
- Do not use this product for functions other than those described in this instruction manual.
- Before cleaning, turn off the power and unplug the unit.
- Disconnect the power if strange sounds, smell, or smoke comes from it.
- Do not press the buttons on the control panel with anything other than your fingers.
- Do not remove any fixed covers. Never use this appliance if it is not working properly, or if it has been dropped or damaged.
- Do not operate or stop the unit by inserting or pulling out the power cord plug.
- Do not use hazardous chemicals to clean or come into contact with the unit. Do not use the unit in the presence of inflammable substances or vapour such as alcohol, insecticides, petrol, etc.
- Prior to cleaning or other maintenance, the appliance must be disconnected from the supply mains.
- Do not remove any fixed covers. Never use this appliance if it is not working properly, or if it has been dropped or damaged.
- Do not run cord under carpeting. Do not cover cord with throw rugs, runners, or similar coverings. Do not route cord under furniture or appliances. Arrange cord away from traffic area and where it will not be tripped over.
- Do not operate unit with a damaged cord, plug, power fuse or circuit breaker.
- To reduce the risk of fire or electric shock, do not use this fan with any solid-state speed control device.
- The appliance shall be installed in accordance with national wiring regulations.
- Contact the authorized service technician for repair or maintenance of this unit.
- Do not cover or obstruct the inlet or outlet grilles.

- Always transport your air conditioner in a vertical position and stand on a stable, level surface during use.
- Always contact a qualified person to carry out repairs. If the damaged power supply cord must be replaced with a new power supply cord obtained from the product manufacturer and not repaired.
- Hold the plug by the head of the power plug when taking it out.
- Turn off the product when not in use.

|   |   |
|---|---|
|   | <b>CAUTION:</b><br>Risk of fire<br><b>flammable materials</b>   |
|   | <b>IMPORTANT NOTE:</b> Read this manual carefully before installing or operating your new appliance unit. Make sure to save this manual for future reference. |
| Explanation of symbols displayed on the unit. |   |
|   | <b>CAUTION</b> This symbol shows that the operation manual should be read carefully.  |
|   | <b>CAUTION</b> This symbol shows that a service personnel should be handling this equipment with reference to the installation manual.                        |
|   | <b>CAUTION</b> This symbol shows that information is available such as the operating manual or installation manual.   |

### WARNING:

- Service shall only be performed as recommended by the equipment manufacturer. Maintenance and repair requiring the assistance of other skilled personnel shall be carried out under the supervision of the person competent in the use of flammable refrigerants.
  - DO NOT modify the length of the power cord or use an extension cord to power the unit.
  - DO NOT share a single outlet with other electrical appliances. Improper power supply can cause fire or electrical shock.
- Please follow the instruction carefully to handle, install, clear, service the appliance to avoid any damage or hazard.

- Flammable Refrigerant R32 is used within appliance.
- When maintaining or disposing of the appliance, the refrigerant (R32) shall be recovered properly, shall not discharge to air directly.
  - Compliance with national gas regulations shall be observed.
  - Keep ventilation openings clear of obstruction.
  - The appliance shall be stored so as to prevent mechanical damage from occurring.
  - A warning that the appliance shall be stored in a well-ventilated area where the room size corresponds to the room area as specified for operation.
  - Any person who is involved with working on or breaking into a refrigerant circuit should hold a current valid certificate from an industry-accredited assessment authority, which authorises their competence to handle refrigerants safely in accordance with an industry recognised assessment specification.

Examples for such working procedures are:

- breaking into the refrigerating circuit;
- opening of sealed components;
- opening of ventilated enclosures.
- No any open fire or device like switch which may generate spark/arcing shall be around appliance to avoid causing ignition of the flammable refrigerant used. Please follow the instruction carefully to store or maintain the appliance to prevent mechanical damage from occurring.
- Do not use means to accelerate the defrosting process or to clean, other than those recommended by the manufacturer.
- The appliance shall be stored in a room without continuously operating ignition sources (for example: open flames, an operating gas appliance) and ignition sources or (for example: an operating electric heater) close to the appliance. The appliance shall be stored in a room without continuously operating ignition sources (for example: open flames, an operating gas appliance or an operating electric heater).
- Do not pierce or burn.
- Be aware that the refrigerants may not contain an odour.

## OPERATING INSTRUCTIONS

### Normal Sounds

**Sound of Rushing Air**  
In front of the unit, you may hear the sound of rushing air being moved by the fan.

**High Pitched Sound**  
High efficiency compressors may have a high pitched sound during cooling cycle.

**Trickling Sound**  
Droplets of water hitting condenser during normal operation may cause a trickling sound.

**Gurgling/Hiss**  
Gurgling or hissing noises may be heard due to refrigerant flowing through evaporator during normal operation.

**Vibration**  
Unit may vibrate and make noise because of poor wall or window construction or incorrect installation.

### NOTICE

All the illustrations in this manual are for explanation purpose only. The actual installation may vary.

### Air Conditioner Operation

#### WARNING

To reduce the risk of fire, electrical shock, or injury to people or property, read the SAFETY PRECAUTIONS before operating this appliance.

### NOTICE

Always wait 3 minutes when turning the unit off and then on again, or when changing from cool to fan and back to cool. This prevents compressor from overheating and possible tripping.

### TO BEGIN OPERATING THE AIR CONDITIONER, FOLLOW THESE STEPS:

- Set the temperature to the coldest setting.
- Set the control to HIGH COOL.
- Adjust the louver for comfortable air flow (see Air Directional Louvers).
- Once the room feels cool, adjust to the temperature you find most comfortable.
- Make sure that the air flow inside and outside are not obstructed by anything.
- This air conditioner is designed to be operated under the following conditions:

|                   |  |
|-------------------|--|
| Cooling Operation | Outdoor temp.: 64-109°F/18-43°C<br>Indoor temp.: 62-90°F/17-32°C |
| Heating Operation | Outdoor temp.: 23-76°F/-5-24°C<br>Indoor temp.: 32-80°F/0-27°C   |

### NOTICE

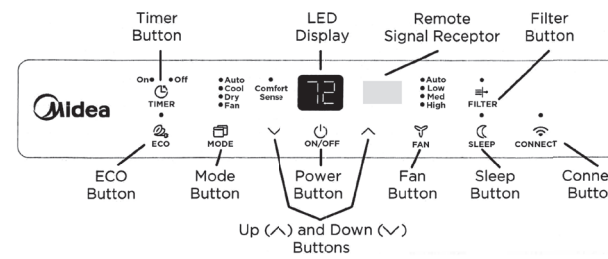
- The relative humidity of room should be less than 80%. If the unit is used in a condition with a relative humidity over 80%, there will be condensed water on the surface of the unit.
- Performance may be reduced outside of these operating temperatures.

Before you begin, thoroughly familiarize yourself with the control panel as shown below and all its functions, then follow the symbol for the functions you desire. The unit can be controlled by the unit control panel alone or with the Remote Control.

### Air Conditioner Features (Models MAW08 / 10 / 12 / 15)

#### Electronic Control Operating Instructions

Before you begin, thoroughly familiarize yourself with the control panel as shown below and all its functions, then follow the symbol for the functions you desire. The unit can be controlled by the unit control alone or with the remote controller.



### TO TURN UNIT ON OR OFF:

Press Power button to turn unit on or off.

### NOTICE

The unit will automatically initiate the Energy Saver function under Cool, Dry, Auto (only Auto-Cooling and Auto-Fan) modes.

### TO CHANGE TEMPERATURE SETTING:

Press UP/DOWN button to change temperature setting.

### NOTICE

Press or hold either UP (^) or DOWN (v) button until the desired temperature is seen on the display. This temperature will be automatically maintained anywhere between 62°F (17°C) and 86°F (30°C). If you want to display the actual room temperature, see To Operate on Fan Only section.

### TO ADJUST FAN SPEEDS:

Press the Fan button to select the Fan Speed in four steps-Auto, Low, Med or High. Each time the button is pressed, the fan speed mode is changed. On Dry mode, the fan operates on Low speed automatically.

### SLEEP FEATURE:

Press the Sleep button to initiate the sleep mode. In this mode the selected temperature will increase by 2°F (1°C) 30 minutes after the mode is selected. The temperature will then increase by another 2°F (1°C) after an additional 30 minutes. This new temperature will be maintained for 7 hours before it returns to the originally selected temperature. The Sleep mode program can be canceled at any time during operation by pressing the Sleep button again.

### CHECK FILTER FEATURE:

The Check Filter feature is a reminder to clean the air filter for a more efficient operation. The light will illuminate after 250 hours of operation. After cleaning the filter, press the Filter button to reset the Check Filter function turning the light off.

### ECO (ENERGY SAVER) FEATURE:

Press the ECO button to initiate this function. This function is available on COOL, DRY, AUTO (only AUTO-COOLING and AUTO-FAN) modes. The fan will continue to run for 3 minutes after the compressor shuts off. The fan then cycles on for 2 minutes at 10 minute intervals until the room temperature is above the set temperature, at which time the compressor turns back on and Cooling resumes.

The images shown here are for illustrative purposes only and may be subject to change, the actual descriptions of control panel and their locations may vary depending on the model.

### TO SELECT THE OPERATING MODE:

To choose the operating mode, press the Mode button. Each time you press the button the unit cycles through the modes, Auto, Cool, Dry, and Fan. The adjacent indicator light will remain on once the mode is selected.

The unit will automatically initiate the ECO function under Cool, Dry, Auto (only Auto-Cooling and Auto-Fan) modes.

### To operate on AUTO mode:

- When you set the air conditioner to AUTO mode, it will automatically select cooling or fan only operation depending on what temperature you have selected and the current room temperature.
- The air conditioner will control room temperature automatically according to temperature you've set.
- The fan speed is automatically controlled based on the temperature setting and room temperature and cannot be adjusted.

### To operate on Fan Only:

- Use this function when cooling is not desired, such as for room air circulation or to exhaust stale air (On some models, remember to open the vent during this function, but keep it closed during cooling for maximum cooling efficiency.)
- You can choose any fan speed you prefer.
- During this function, the display will show the actual room temperature, not the set temperature as in the cooling mode.
- In Fan Only mode, the temperature is not adjusted.

### To operate on DRY mode:

- In this mode, the air conditioner will generally function as a dehumidifier. Since the conditioned space is a closed or sealed area, some degree of cooling will occur.

### TIMER: AUTO START/STOP FEATURE:

- When the unit is on or off, first press the Timer button. The TIMER ON indicator light illuminates indicating the Auto Start program has initiated.
- When the time of TIMER ON is displayed, press the Timer button again. The TIMER OFF indicator light illuminates. It indicates the Auto Stop program has initiated.
- Press or hold the UP or DOWN button to change the Auto time by 0.5 hour increments, up to 10 hours, then 1 hour increments up to 24 hours. The control will count down the time remaining until start.
- The selected time will register in 5 seconds, and the system will automatically revert back.

### NOTICE

If the unit shuts off unexpectedly due to the power outage, it will restart with the previous function setting automatically when the power resumes.

### Additional Information

Now that you understand the operating procedure, here are more features in your control that you should become familiar with.

- The Cool circuit has an automatic 3 minute time delayed start if the unit is turned off and on quickly. This prevents overheating of the compressor and possible circuit breaker tripping. The fan will continue to run during this time.
- The control can display temperature in Fahrenheit or Celsius. To convert from one to the other, press and hold the UP (^) or DOWN (v) Temp/Timer buttons at the same time, for 3 seconds.

### FRESH AIR VENT CONTROL (FOR 10000 BTU/H TO 14500 BTU/H)

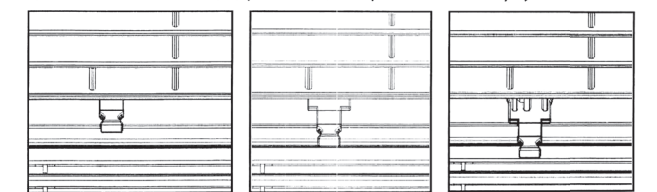
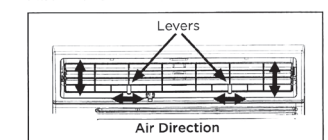


Fig. A (VENT CLOSED) Fig. B (VENT OPEN) Fig. C (VENT & EXHAUST OPEN)

The Fresh Air Vent allows the air conditioner to:

- Recirculate inside air - Vent Closed (See Fig. A)
- Draw fresh air into the room - Vent Open (See Fig. B)
- Exchange air from the room and draw fresh air into the room - Vent and Exhaust Open (See Fig. C).

### AIR DIRECTIONAL LOUVERS



The louvers will allow you to direct the air flow up or down (on some models) and left or right throughout the room as needed. Pivot horizontal louvers until the desired up/down direction is obtained. Move the levers from side to side until the desired left/right direction is obtained.

The image shown here is for illustrative purposes only and may be subject to change.

# INSTALLATION INSTRUCTIONS

## ⚠ WARNING - Before You Begin

Read these instructions completely and carefully.  
**• IMPORTANT - Save these instructions.**  
**• IMPORTANT - Observe all governing codes and ordinances.**

We recommend that two people install this product.  
 Proper installation is the responsibility of the installer.  
 Product failure due to improper installation is not covered under the Limited Warranty.

You **MUST** use all supplied parts and use proper installation procedures as described in these instructions when installing this air conditioner.  
 Do not, under any circumstances, cut or remove the third (ground) prong from the power cord.  
 Do not change the plug on the power cord of the air conditioner.

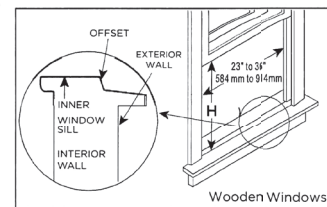
Aluminum house wiring may present special problems - consult a qualified electrician.  
 When handling the air conditioner, be careful to avoid cuts from sharp metal edges and aluminum fins on front and rear coils. Please wear cut-resistant gloves.

## NOTICE

Save the carton and these installation instructions for future reference.  
 The carton is the best way to store the unit when not in use.

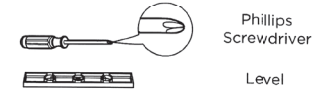
## Window Requirements

Your air conditioner is designed to install in standard double hung windows with opening widths of 23" to 36" (584mm to 914mm).

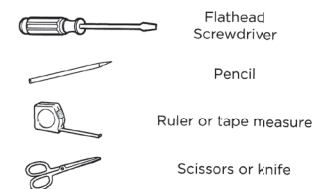


| Model | 8000 BTU/h  | 10000-14500 BTU/h |
|-------|-------------|-------------------|
| H     | 14" (356mm) | 15-1/2" (394mm)   |

## Tools You Will Need (Tools Not Included)

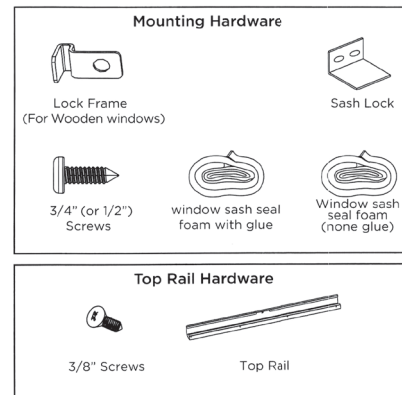


## Tools You May Use



## 1. Prepare the Window

Lower sash must open sufficiently to allow a clear vertical opening (see dimension H in Table 1). Side louvers and the rear of the AC must have clear air space to allow enough airflow through the condenser for heat removal. The rear of the unit must be outdoors, not inside a building or garage.

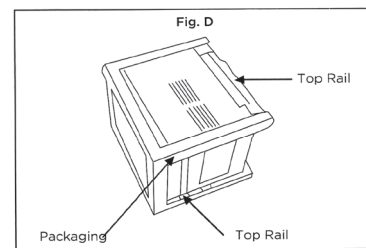


**⚠ CAUTION**  
 When handling unit, be careful to avoid cuts from sharp metal edges and aluminum fins on front and rear coils.

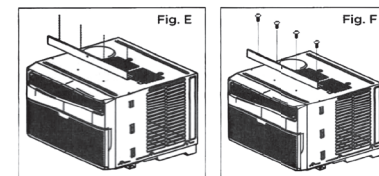
Accessories may vary depending on the model.

## 2. Prepare the Air Conditioner

Before installing the unit, the top rail must be assembled on the unit.  
 A: Remove the air conditioner from the carton and place on a flat surface.  
 B: Remove top rail from the packaging material as shown in Fig. D.



C. Align the hole in the top rail with those in the top of the unit as shown in Fig. E.  
 D. Secure the top rail to the unit with the 3/8" Screws as shown in Fig. F.



## ⚠ WARNING

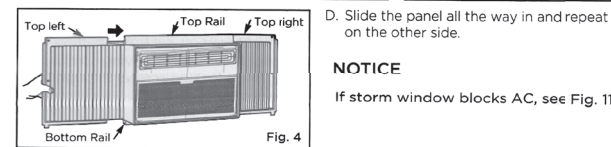
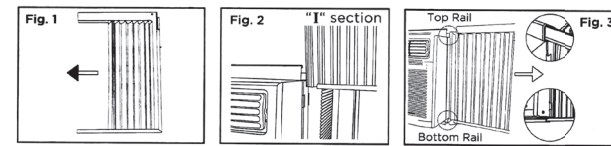
For safety reasons, all four (4) screws **MUST** be securely fastened.

## 3. Install Accordion Panels on Air Conditioner

**NOTICE**  
 The Top rail and Sliding Panels on each side are offset to provide the proper pitch to the rear of the unit 5/16" (8mm). This is necessary for proper condensate management and drainage.  
 If you are not using the Side Panels for any reason, this pitch to the rear must be maintained.

Place unit on the floor, a bench or a table. There is a left and right side accordion panel; be sure to use the proper panel for each side. When installed, the flange for securing the panel in place to the window sill will be facing into the room.

A. Hold the side panel in one hand and gently pull back the center to free the open end. See Fig. 1.  
 B. Slide the free end "I" section of the panel directly into the cabinet as shown in Fig. 2. Slide the panel down. Be sure to leave enough space to slip the top and bottom of the frame into the rails on the cabinet.  
 C. Once the panel has been installed on the side of the cabinet, make sure it sits securely inside the frame channel by making slight adjustments. Slide the top and bottom ends of the frame into the top and bottom rails of the cabinet. Fig. 3.

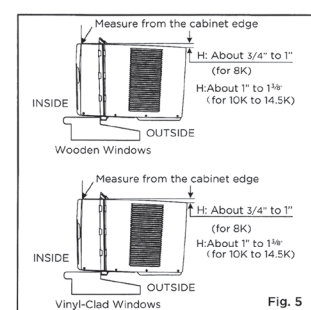


D. Slide the panel all the way in and repeat on the other side.

## NOTICE

If storm window blocks AC, see Fig. 11.

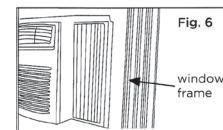
## 4. Install Air Conditioner



A. While keeping a firm grip on the air conditioner, carefully place the unit into the window opening so the bottom of the air conditioner frame is against the window sill (Fig. 5). Carefully close the window behind the top rail of the unit.

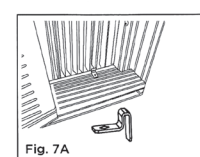
## NOTICE

Check that air conditioner is tilted back per dimension H (Fig. 5) (tilted about 3° to 4° downward to the outside). After proper installation, condensate should not drain from the overflow drain hole during normal use. Adjust the slope if otherwise.

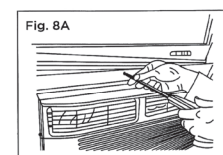


B. Extend the side panels out against the window frame (Fig. 6).

## 5. Secure Air Conditioner



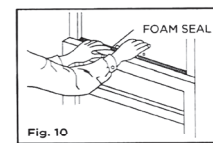
A. Place the frame lock between the frame extensions and the window sill as shown (Fig. 7A for Wooden windows). Drive 3/4" (19 mm) or 1/2" (12.7 mm) locking screws through the frame lock and into the sill.  
 NOTE: To prevent window sill from splitting, drill 1/8" (3 mm) pilot holes before driving screws.



B1: For wooden windows:  
 Drive 1/2" (12.7 mm) locking screws through the top rail and into the window sash (Fig. 8A).  
 NOTE: To prevent window sill from splitting, drill 1/8" (3mm) pilot holes before driving screws.  
 Drive 1/2" (12.7mm) locking screws through frame holes into window sash (Fig. 8B).

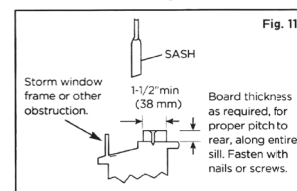


C. Secure lower sash in place by attaching the sash lock with the 3/4" (19 mm) or 1/2" (12.7 mm) screw as shown (Fig. 9).



D. Cut Window sash seal foam and insert it in the space between the upper and lower sashes (Fig. 10).

## If AC is Blocked by Storm Window



Add wood as shown in Fig. 12, or remove storm window before air conditioner is installed.

If storm window frame must remain, be sure the drain holes or slots are not caulked or painted shut. Accumulated rain water or condensation must be allowed to drain out.

## Removing AC From Window

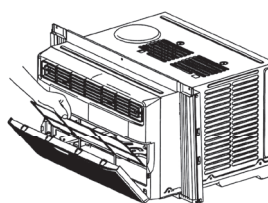
- Turn AC off, and disconnect power cord.
- Remove sash seal from between windows, and unscrew sash lock.
- Remove screws installed through top rail and side panel frames.
- Close (slide) the side panels into the rails.
- Keeping a firm grip on the air conditioner, raise the sash and carefully remove.
- Be careful not to spill any condensate while lifting unit from window. Store parts WITH air conditioner.

# CARE AND CLEANING

## ⚠ CAUTION

Clean your air conditioner occasionally to keep it looking new. Be sure to unplug the unit before cleaning to prevent shock or fire hazards.

## Air Filter Cleaning



The air filter should be checked at least once every two weeks to see if cleaning is necessary. Trapped particles in the filter can build up and cause an accumulation of frost on the cooling coils and reduce performance.

- Grasp the filter by the center and pull up and out.
- Wash the filter using warm water. Rinse filter thoroughly.
- Gently shake excess water from the filter. Be sure the filter is thoroughly dry before replacing.
- Instead of washing, you may also vacuum the filter clean rather than washing.

## NOTICE

Never use hot water over 104°F (40°C) to clean the air filter. Never attempt to operate the unit without the air filter.

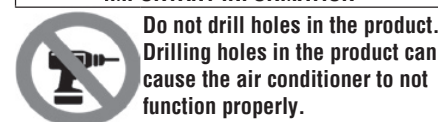
## Cabinet Cleaning

- Be sure to unplug the air conditioner to prevent shock or fire hazard. The cabinet and front may be dusted with an oil-free cloth or washed with a cloth dampened in a solution of warm water and mild liquid dishwashing detergent. Rinses thoroughly and wipe dry.
- Never use harsh cleansers, wax or polish on the cabinet front.
- Be sure to wring excess water from the cloth before wiping around the controls. Excess water in or around the controls may cause damage to the air conditioner.
- Plug in air conditioner.

## Winter Storage

If you plan to store the air conditioner during the winter, remove it carefully from the window according to the installation instructions. Cover it with plastic or return it to the original carton.

## IMPORTANT INFORMATION



# TROUBLESHOOTING TIPS

Before calling for service, review this list. It may save you time and expense. This list includes common occurrences that are not the result of defective workmanship or materials in this appliance.

| Problem  | Solution  |
|--|---|
|  | Wall plug disconnected. Push plug firmly into wall outlet.  |
|  | Circuit breaker tripped. Reset circuit breaker.   |
| Air conditioner does not start.  | Check if the light on the plug is on. If it is off, press the RESET button.   |
|  | Power is OFF. Turn power ON.  |
|  | Unit turned off and then on quickly. Turn unit off and wait 3 minutes before restarting.  |
|  | Room temperature below 62°F (17°C). Cooling may not occur until room temperature rises above 62°F (17°C).                             |
| Air from unit does not feel cold enough.   | Temperature sensor behind the air filter is touching the cold coil. Try to move it so it does not contact the cold coil.              |
|  | Reset to a lower temperature.   |
|  | Compressor shut-off by changing modes. Wait approximately 3 minutes and listen for compressor to restart when set in the COOL mode.   |
|  | Check for potential obstructions blocking the outdoor intake/exhaust. Clear any obstructions.   |
| Air conditioner cooling, but room is too warm- ice forming on cooling coil behind air filter.    | Outdoor temperature below 64°F (18°C). To defrost the coil, set to FAN ONLY mode.   |
|  | Air filter may be dirty. Clean filter. Refer to Care and Cleaning section. To defrost, set to FAN ONLY mode.                          |
|  | Thermostat set too cold for night-time cooling. To defrost the coil, set to FAN ONLY mode. Then, set temperature to a higher setting. |
|  | Dirty or restricted air filter. Clean filter. Refer to Care and Cleaning section. To defrost, set to FAN ONLY mode.                   |
|  | Temperature is set too high, set temperature to a lower setting.  |
| Air conditioner cooling, but room is too warm- NO ice forming on cooling coil behind air filter. | Air directional louvers positioned improperly. Position louvers for better air distribution.  |
|  | Front of unit is blocked by drapes, blinds, furniture, etc. - restricts air distribution. Clear obstruction in front of unit.         |
|  | Any open doors, windows, or registers may allow cold air to escape. Close any doors, windows, or registers.                           |
|  | The room may be too warm. Allow additional time to remove "stored heat" from walls, ceiling, floor and furniture.                     |

## REFURBISHED PRODUCT LIMITED THIRTY DAY WARRANTY

The **Refurbished Product Service Center** offers the following WARRANTY to the ORIGINAL purchaser of a product which we have refurbished.

This product that has been refurbished is warranted against any electronic or mechanical defects for a period of THIRTY DAYS from the date of the original purchase by the consumer. Since this unit was sold as a refurbished item, the warranty does not apply to any cosmetic appearance items such as scratches. Should a defect occur, the **Refurbished Product Service Center** will repair or, at its option, replace defective unit/parts with new or rebuilt materials without charge for other parts or labor. Replacement unit/parts will be warranted for the remaining portion of the original warranty period.

This warranty does not cover installation or damage from accident, misuse, abuse, improper wiring, incorrect voltage, operating the unit against the instructions in the owner's manual or any product which has been opened, altered, or tampered with.

This warranty does not cover costs for removal and/or installation of the unit for repair. Under no circumstances shall the service center be liable for any special, incidental or consequential damages or for any other expenses incurred by reason of use or sale of this product. This warranty is in lieu of any other warranties expressed or implied warranty of merchantability of fitness for particular use or otherwise.

This warranty gives the consumer specific legal rights and they may also have other rights which vary from State to State. Some States do not follow the exclusion or limitation of incidental or consequential damages, hence the above exclusion and limitations may not apply.

**Refurbished Product Service Center**

13225 Marquardt Avenue Santa Fe Springs, CA 90670

## WARRANTY REPAIR INFORMATION

If you need service on your unit during the 30 day warranty period, please go to [www.ConsumerServiceRefurbish.com](http://www.ConsumerServiceRefurbish.com) or call the Refurbished Product Service Center at 562-946-3531 to obtain the required claim number. Once you obtain your claim number, pack the unit properly (the original carton is ideal for this purpose) along with a copy of your purchase receipt. Send the unit freight prepaid and insured to:

**Refurbished Product Service Center,**

**Attn: Customer Service Department 13225 Marquardt Avenue Santa Fe Springs, CA 90670**

Your unit will be promptly exchanged and returned to you.

We will refuse to accept delivery of the returned unit unless the assigned claim number appears on the outside of the shipping carton.

## Owner's Information

(Keep for your permanent records)

NAME: \_\_\_\_\_  
 ADDRESS: \_\_\_\_\_  
 CITY: \_\_\_\_\_ STATE: \_\_\_\_\_ ZIP CODE: \_\_\_\_\_  
 PHONE: \_\_\_\_\_ E-MAIL: \_\_\_\_\_  
 MODEL: \_\_\_\_\_ SERIAL NO.: \_\_\_\_\_

NOTE: In order to ensure the highest possible standard for refurbished items, all units are thoroughly inspected as part of the process. For this item, water may be used during the refurbishing process and so; you may notice some condensation in the water reservoir. It is recommended to rinse the water reservoir with fresh water prior to its first use.

PRINTED IN MEXICO / SC: 07-09-2024 / ELBRD: J.E. / SHNMDL: MAW12S1DWWT / OBPB:16120300A31763  
 ADD:MAW08S1DWWRR\_MAW08S1DWBLT\_MAW10S1DWBLL\_MAW10S1DWWTT\_MAW12S1DWWTT\_MAW15S1DWWTT\_MAW08S1DWWT\_MAW08S1DWBL\_MAW10S1DWWT\_MAW10S1DWBL\_MAW15S1DWWT

814100259

