

NINJA

KITCHEN SYSTEM

“Recipe book is not included”



OWNER'S GUIDE
814100019

PLEASE READ CAREFULLY AND KEEP FOR FUTURE REFERENCE.

IMPORTANT SAFETY INSTRUCTIONS

PLEASE READ CAREFULLY BEFORE USE • FOR HOUSEHOLD USE ONLY

	Read and review instructions for operation and use.
	Indicates the presence of a hazard that can cause personal injury, death or substantial property damage if the warning included with this symbol is ignored.
	For indoor and household use only.
When using electrical appliances, basic safety precautions should always be followed, including the following:	

WARNING

To reduce the risk of injury, fire, electrical shock or property damage, basic safety precautions must always be followed, including the following numbered warnings and subsequent instructions. Do not use appliance for other than intended use.

- Read all instructions prior to using the appliance and its accessories.
- Carefully observe and follow all warnings and instructions. This unit contains electrical connections and moving parts that potentially present risk to the user.
- Take your time and exercise care during unpacking and appliance setup. This appliance contains sharp, loose blades that can cause injury if mishandled.
- Upon completion of processing, ensure the blade assembly is removed **BEFORE** emptying container's contents. Remove the blade assembly by carefully grasping the top of the shaft and lifting it from the container. Failure to remove the blade assembly before emptying the container results in a risk of laceration.
- If using the pitcher's pour spout, hold the cover in place on the container or ensure lid lock is engaged when pouring to avoid risk of injury.
- Take inventory of all contents to ensure you have all parts needed to properly and safely operate your appliance.
- Blades are sharp. Handle carefully.
- This product is provided with a Stacked Blade Assembly and a Chopping Blade Assembly. **ALWAYS** exercise care when handling blade assemblies. The blade assemblies are sharp and are **NOT** locked in place in their containers. The blade assemblies are designed to be removable to facilitate cleaning and replacement if needed. **ONLY** grasp the blade assembly by the top of the shaft. Failure to use care when handling the blade assemblies will result in a risk of laceration.
- ALWAYS** exercise care when handling the Nutri Ninja® Blade Assembly. The blades are sharp. **ONLY** grasp the Nutri Ninja Blade Assembly by the outer perimeter of the blade assembly base. Failure to use care when handling the blade assembly will result in a risk of laceration.
- Turn the appliance **OFF**, then unplug the appliance from the outlet when not in use, before assembling or disassembling parts, and before cleaning. To unplug, grasp the plug by the body and pull from the outlet. **NEVER** unplug by grasping and pulling the flexible cord.
- Before use, wash all parts that may contact food. Follow washing instructions covered in this instruction manual.
- Before each use, inspect blade assemblies for damage. If a blade is bent or damage is suspected, contact SharkNinja to arrange for replacement.
- DO NOT** use this appliance outdoors. It is designed for indoor household use only.
- This appliance has a polarized plug (one prong is wider than the other). To reduce the risk of electric shock, this plug will fit in a polarized outlet only one way. If the plug does not fit fully in the outlet, reverse the plug. If it still does not fit, contact a qualified electrician. **DO NOT** modify the plug in any way.
- DO NOT** operate any appliance with a damaged cord or plug, or after the appliance malfunctions or is dropped or damaged in any manner. This appliance has no user-serviceable parts. If damaged, contact a service center.
- This appliance has important markings on the plug blade. The entire supply cord is not suitable for replacement. If damaged, please contact SharkNinja for service.
- Extension cords should **NOT** be used with this appliance.
- To protect against the risk of electric shock, **DO NOT** submerge the appliance or allow the power cord to contact any form of liquid.
- DO NOT** allow the cord to hang over the edges of tables or counters. The cord may become snagged and pull the appliance off the work surface.
- DO NOT** allow the unit or the cord to contact hot surfaces, including stoves and other heating appliances.
- ALWAYS** use the appliance on a dry and level surface.
- DO NOT** allow children to operate this appliance or use as a toy. Close supervision is necessary when any appliance is used near children.
- This appliance is **NOT** intended to be used by people with reduced physical, sensory, or mental capabilities, or lack of experience and knowledge, unless they have been given supervision or instruction concerning use of the appliance by a person responsible for their safety.
- ONLY** use attachments and accessories that are provided with the product or are recommended by SharkNinja. The use of attachments, including canning jars, not recommended or sold by SharkNinja may cause fire, electric shock, or injury.
- NEVER** place a blade assembly on the motor base without it first being attached to its corresponding container (pitcher or cup) with the lid also in place.
- Keep hands, hair, and clothing out of the container when loading and operating.
- During operation and handling of the appliance, avoid contact with moving parts.
- DO NOT** fill containers past the **MAX FILL** or **MAX LIQUID** lines.
- DO NOT** operate the appliance with an empty container.
- DO NOT** microwave any containers or accessories provided with the appliance.
- NEVER** leave the appliance unattended while in use.
- DO NOT** blend hot liquids. Doing so may result in pressure buildup and steam exposure that can pose a risk of the user being burned.
- DO NOT** process dry ingredients with the Single-Serve Blending Cup and Nutri Ninja® Blade Assembly, the pitcher and Stacked Blade Assembly, or the processor bowl and Chopping Blade Assembly.
- To reduce the risk of injury, never place Chopping Blade Assembly or discs on base without first putting bowl properly in place.
- DO NOT** perform grinding operations with the Single-Serve Blending Cup and Nutri Ninja Blade Assembly, the pitcher and Stacked Blade Assembly, or the processor bowl and Chopping Blade Assembly.
- NEVER** operate the appliance without lids and caps in place. **DO NOT** attempt to defeat the interlock mechanism. Ensure the container and lid are properly installed before operation.
- Before operation, ensure all utensils are removed from containers. Failure to remove utensils can cause containers to shatter and potentially result in personal injury and property damage.
- Keep hands and utensils out of containers while chopping to reduce the risk of severe personal injury or damage to the blender/food chopper. A scraper may be used **ONLY** when the blender or processor is not running. When using the processor, always use food pusher to add food. **NEVER** add food by hand.
- If you find unmixed ingredients sticking to the sides of the cup, stop the appliance, remove the blade assembly, and use a scraper to dislodge ingredients.
- DO NOT** open the pitcher's pour spout cap while blender is operating.
- If you find unmixed ingredients sticking to the sides of the pitcher, stop the appliance, remove the lid, and use a spatula to dislodge ingredients. **NEVER** insert your hands into the pitcher, as you may contact one of the blades and experience a laceration.

- DO NOT** attempt to remove the container or lid from the motor base while the blade assembly is still spinning. Allow the appliance to come to a complete stop before removing lids and containers.
- If the appliance overheats, a thermal switch will activate and temporarily disable the motor. To reset, unplug the appliance and allow it to cool for approximately 30 minutes before using again.
- DO NOT** expose the containers and accessories to extreme temperature changes. They may experience damage.
- Remove the Nutri Ninja® Blade Assembly from the Single-Serve Cup upon completion of blending. **DO NOT** store ingredients before or after blending them in the cup with the blade assembly attached. Some foods may contain active ingredients or release gases that will expand if left in a sealed container, resulting in excessive pressure buildup that can pose a risk of injury. For ingredient storage in the cup, use only To-Go Lid to cover.

- The maximum wattage rating for this appliance is based on the configuration of the Nutri Ninja Blade Assembly and Single-Serve Cup. Other configurations may draw less power or current.
- DO NOT** submerge the motor base or control panel in water or other liquids. **DO NOT** spray motor base or control panel with any liquid.
- DO NOT** attempt to sharpen blades.
- Turn off the appliance and unplug the motor base before cleaning.
- Unit is intended to create a dough ball. It is **NOT** intended to continuously knead. After dough ball forms, additional kneading should be done by hand on a work surface. If the unit moves excessively on the work surface, remove the dough ball and knead by hand.

TECHNICAL SPECIFICATIONS
Voltage: 120V~, 60Hz

SAVE THESE INSTRUCTIONS

BEFORE FIRST USE

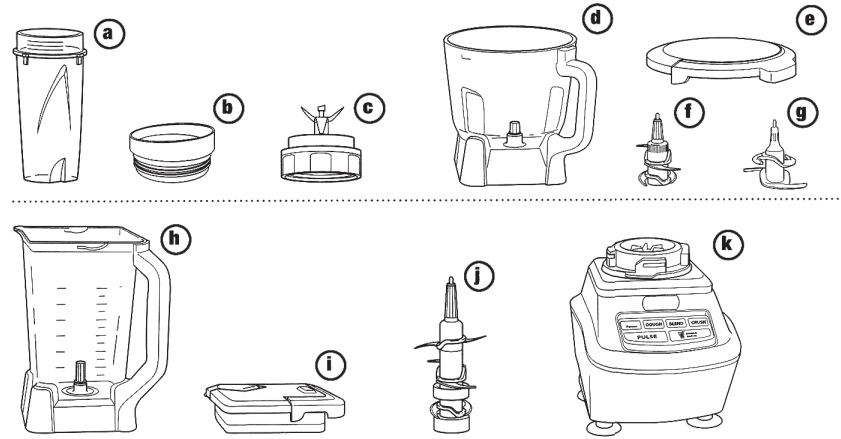
- Remove all packaging material and labels from the appliance. Separate/remove all parts from each other.
- Wash the lids, pitcher, bowl, Nutri Ninja® cups and Blade Assemblies in warm, soapy water. When washing the blade assemblies, use a dish-washing utensil with a handle to avoid direct hand contact with blades.
- Handle blade assemblies with care to avoid contact with sharp edges. Rinse and air dry thoroughly.
- The pitcher, bowl, Nutri Ninja cups, lids and blade assemblies are all dishwasher safe. It is recommended that the lids and blade assemblies be placed on the top rack. Ensure that the blade assemblies are removed from the containers before placing in the dishwasher.
- Wipe the motor base clean with a damp cloth.

FEATURES

- Total Crushing® Technology
- Extra Large, 72 oz. Pitcher (MAX Liquid Capacity: 64 oz.) - BPA Free
- 64 oz. Bowl - BPA Free
- Nutri Ninja® Cup - BPA Free
- Lock-In Lid, Featuring Pour Spout

NOTE: In order to ensure the highest possible standard for refurbished items, all units are thoroughly inspected as part of the process. For this item, water may be used during the refurbishing process and so; you may notice some condensation in the water reservoir. It is recommended to rinse the water reservoir with fresh water prior to its first use.

PARTS

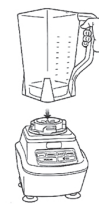


- a Nutri Ninja® Cup
 - b Nutri Ninja To-Go Lid
 - c Nutri Ninja Blade Assembly
 - d 64 oz. Bowl
 - e Bowl Lid
 - f Chopping Blade Assembly (bowl)
 - g Dough Blade Assembly (bowl)
 - h 72 oz. Pitcher
 - i Pitcher Lid with Locking Handle
 - j Stacked Blade Assembly (pitcher)
 - k Motor Base
 - l Power Cord (not shown)
- NOTE:** Attachments are not interchangeable.

USING THE BLENDER PITCHER

IMPORTANT: As a safety feature, the power button (b) will flash and the motor will not work if the pitcher and lid are not installed correctly. When the pitcher and lid are installed properly, the power button (b) will be solid, indicating that the appliance is ready for use.

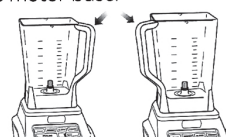
- Place the motor base on a clean, dry, level surface such as a counter or table top. Press down on the motor base to make sure that the Suction Cups adhere to the counter or table top.



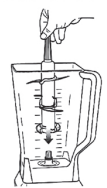
- Align and lower the Pitcher onto the motor base. Handle should be aligned slightly to the right of the **LOCK** symbol on the motor base.



- Rotate the pitcher clockwise until it clicks in place. As the pitcher rotates, it will lower and the safety tabs on the bottom of the pitcher will slide under the safety tabs on the top of the motor base.



- The pitcher can be placed on the motor base two ways; the handle can be on the front right corner or the front left corner.



NOTE: The Stacked Blade Assembly will fit loosely on the drive gear.

- Add the ingredients to the pitcher, making sure that they do not exceed the highest measured marking line on the side of the pitcher.

NOTE: If you need to add additional ingredients while the appliance is processing, open the pour spout cap and pour the ingredients in through the opening.

NOTE: When blending any kind of liquids, such as mixtures of any drinks or smoothies, do not exceed the MAX LIQUID mark (64 oz.) on the pitcher.

NOTE: The images shown here are for illustrative purposes only and may be subject to change.

NOTE: Accessories may vary depending on the model. Refer to quick guide, if available.



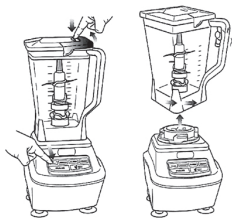
- 7** Holding the lid by the handle in the upright position, place it on top of the pitcher aligning the triangle (▼) located on the lid with the triangle (▲) located on the pitcher's handle. The triangles on the lid and the blender handle **MUST** be aligned in order for the blender to turn on. Press the handle down until you hear a click.
- 8** Plug the power cord into the electrical outlet and press the power button (⏻).



- 9** Select the speed that best suits your needs.

NOTE: Pulse ingredients for even chopping by pressing down in short intervals.

- 10** When you have reached your desired consistency, stop the appliance by pressing same button again or select the power button (⏻) and wait for the attachment to stop turning.



- 11** To remove the lid, press the release button on the lid, pull the lid handle up to a 90° angle and lift the lid off. Turn the pitcher counter clockwise and then lift off the base.
- 12** Depending on the consistency of the contents in the container, open the pour spout cap and use the spout to empty liquid contents.
- 13** For thicker consistencies, remove the lid and Stacked Blade Assembly carefully (by its shaft), then empty contents from the container. To remove the lid, press the release button on the lid and pull the lid handle up to a 90° angle and lift the lid off the blender pitcher.
- 14** Make sure that the unit is unplugged when not in use.



- 15** To release the motor base from the counter or table top, place your hands underneath both sides of the motor base and gently pull the unit up and towards you.

USING THE NUTRI NINJA® CUP

- 1** Place the motor base on a clean, dry, level surface such as a counter or table top. Press down on the motor base to make sure that the suction cups adhere to the counter or table top.

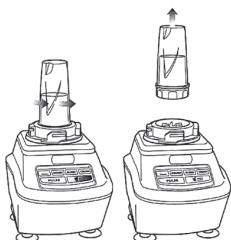


- 2** Add ingredients to the cup.
- 3** Place the Blade Assembly onto the cup and screw it tightly until you have a good seal.



- 4** Turn the cup upside down and place it onto the motor base, aligning the tabs on the cup with the motor base. Turn the cup clockwise to lock into place. You will hear a click when the lock is engaged. Press the power button. The Single Serve button will illuminate.

- 5** Press down on the Single Serve button in short intervals to activate.



- 6** Once you have reached your desired consistency, turn the power button off. Turn the Nutri Ninja cup counter clockwise and pull straight up to remove.

NOTE: DO NOT overfill. To avoid spilling, do not add ingredients past the MAX fill line.

- 7** Turn the cup upright and remove the Nutri Ninja Blade Assembly by twisting the blade assembly counter-clockwise.
- 8** **DO NOT** store blended contents with the Nutri Ninja Blade Assembly attached.
- 9** Place the Spout drinking lid onto the cup and twist to seal.
- 10** Be sure to attach the Blade Assembly to an empty cup when not in use.
- 11** Make sure that the motor base is unplugged when not in use.
- 12** To release the motor base from the counter or table top, place your hands underneath both sides of the motor base and gently pull the unit up and towards you.

USING THE FOOD PROCESSOR BOWL

IMPORTANT: As a safety feature, the power button (⏻) will flash and the motor will not work if the bowl and lid are not installed correctly. When the bowl and lid are installed properly, the power button (⏻) will be solid, indicating that the appliance is ready for use.

NOTE: The Chopping and Dough Blade Assemblies will fit loosely on the drive gear.

NOTE: Please follow the same instructions to install the Dough Blade Assembly.

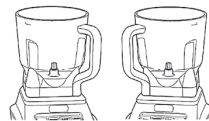
- 1** Place the motor base on a clean, dry, level surface such as a counter or table top. Press down on the motor base to make sure that the suction cups adhere to the counter or table top.



- 2** Align and lower the bowl onto the motor base. Handle should be aligned slightly to the right of the **LOCK** symbol on the motor base.



- 3** Rotate the bowl clockwise to lock into place. You will hear a click when the lock is engaged.



- 4** The bowl can be placed on the motor base two ways; the handle can be on the front right corner or the front left corner.



- 5** Holding the desired Blade Assembly by the top of the shaft, place it onto the drive gear inside the bowl. Ensure that the Blade Assembly is seated properly and is standing upright.

NOTE: The blade will fit loosely on the drive gear.

- 6** Add the ingredients to the bowl, making sure not to exceed the highest measured marking line on the side of the bowl.



- 7** Holding the lid by the handle in the upright position, place it on top of the bowl aligning the arrow (▼) located on the lid with the arrow (▲) located on the bowl's handle. Press the handle down until you hear a click.

NOTE: To add liquids during processing, open the drizzle hole on the top of the lid and pour the liquid slowly into the mixture.

- 8** Plug the power cord into the electrical outlet and press the power button (⏻).
- 9** When you have reached your desired consistency, stop the appliance by pressing the power button (⏻) and wait for the Chopping Blade Assembly to stop turning.



- 10** To remove the lid, press the release button on the lid and pull the lid handle up to a 90° angle.

- 11** Turn the bowl counter-clockwise and lift it to remove it from the motor base.

- 12** To release the motor base from the counter or table top, place your hands underneath both sides of the motor base and gently pull the unit up and towards you.

CARE & MAINTENANCE

CLEANING

Separate all parts. Wash all containers in warm, soapy water with a soft cloth.

• Hand-Washing

Wash blade assemblies in warm, soapy water using a dishwashing utensil with a handle to avoid direct contact with the blades. Exercise care when handling blade assemblies as the blades are sharp. Thoroughly rinse and air-dry all parts.

• Dishwasher

All attachments are dishwasher safe. It is recommended that the lids, containers, and blade assemblies be placed on the top rack of the dishwasher **ONLY**. Ensure the blade assemblies are removed from their containers before placing in the dishwasher. Exercise care when handling blade assemblies.

• Motor Base

Turn off the unit and unplug the motor base before cleaning. Wipe motor base with a clean, damp cloth.

DO NOT use abrasive cloths, pads, or brushes to clean the base.

STORING

Wrap the power cord around the cord wrap on the back of the motor base. Store the unit upright and store all blade assemblies inside or attached to their respective containers with their lids locked in place.

DO NOT store blended or unblended ingredients in the Single-Serve Cup with the Nutri Ninja® Blade Assembly attached.

DO NOT stack items on top of the containers. Store any remaining attachments alongside the unit or in a cabinet where they will not be damaged or create a hazard.

RESETTING THE MOTOR

This unit features a unique safety system that prevents damage to the motor and drive system should you inadvertently overload the it. If the unit is overloaded, the motor will be temporarily disabled. Should this occur, follow the reset procedure below.

- 1 Unplug the appliance from the electrical outlet.
- 2 Remove and empty the container and ensure that no food is jamming the blade assembly.
- 3 Allow the appliance to cool for approximately 15 minutes.
- 4 Re-install the container onto the base and re-plug the appliance into the electrical outlet.
- 5 Proceed to use the appliance as before making sure not to exceed the recommended maximum capacities.

IMPORTANT: Ensure that maximum capacities are not exceeded. This is the most typical cause of appliance overload.

TROUBLESHOOTING GUIDE

Motor Doesn't Start or Blade Assembly Doesn't Rotate.

- Make sure the container is securely locked on the motor base.
- Make sure the lid is securely on the container in the correct position (align arrows).
- The appliance is turned Off. Press the power button (⏻) to turn blender On.
- Check that the plug is securely inserted into the electrical outlet.
- Check the fuse or circuit breaker.
- The unit has overheated or overloaded. Unplug and wait approximately 15 minutes before using again.
- Check to make sure the unit is not overloaded.

Food is Unevenly Chopped.

- Either you are chopping too much food at one time, or the pieces are not of even size and processing smaller amounts per batch.

Food is Chopped Too Fine or is Too Watery.

- The food has been over processed. Use pulse button for controlled processing.

Food Collects On Lid or On the Sides of the Container.

- The mixture is too thick. Add more liquid.

You Cannot Achieve Snow From Solid Ice.

- **DO NOT** use ice that has been sitting out or has started to melt. Use ice straight from the freezer.
- Start with a few pulses and then go to a continuous blending cycle.

Motor Base Won't Stick to Counter or Table Top.

- Make sure surface and suction feet are wiped clean. Suction feet will only stick to smooth surfaces. Suction feet **WILL NOT** stick on some surfaces such as, wood, tile and non-polished finishes.
- **DO NOT** attempt to use appliance when the motor base is stuck to a surface that is not secure, (cutting board, platter, plates, etc.).

REFURBISHED PRODUCT LIMITED NINETY DAYS WARRANTY

The **Refurbished Product Service Center** offers the following WARRANTY to the ORIGINAL purchaser of a product which we have refurbished.

This product that has been refurbished is warranted against any electronic or mechanical defects for a period of NINETY DAYS from the date of the original purchase by the consumer. Since this unit was sold as a refurbished item, the warranty does not apply to any cosmetic appearance items such as scratches. Should a defect occur, the **Refurbished Product Service Center** will repair or, at its option, replace defective unit/parts with new or rebuilt materials without charge for either parts or labor. Replacement unit/parts will be warranted for the remaining portion of the original warranty period.

This warranty does not cover installation or damage from accident, misuse, abuse, improper wiring, incorrect voltage, operating the unit against the instructions in the owner's manual or any product which has been opened, altered, or tampered with.

This warranty does not cover costs for removal and or installation of the unit for repair. Under no circumstances shall the service center be liable for any special, incidental or consequential damages or for any other expenses incurred by reason of use or sale of this product. This warranty is in lieu of any other warranties expressed or implied warranty of merchantability of fitness for particular use or otherwise.

This warranty gives the consumer specific legal rights and they may also have other rights which vary from State to State. Some States do not follow the exclusion or limitation of incidental or consequential damages, hence the above exclusion and limitations may not apply.

Refurbished Product Service Center
13225 Marquardt Avenue Santa Fe Springs, CA 90670.

WARRANTY REPAIR INFORMATION

If you need service on your unit and this product requires repair during the 90 days warranty period; please go to www.ConsumerServiceRefurbish.com or call the **Refurbished Product Service Center** at 562-946-3531 to obtain the required return authorization (RA) number. Pack the unit properly (the original carton is ideal for this purpose) along with a copy of your purchase receipt and a letter describing the problem. Send the unit freight prepaid and insured to:

Refurbished Product Service Center,
Att: Customer Service Department 13225 Marquardt Avenue Santa Fe Springs, CA 90670

Your unit will be promptly repaired and returned to you. We will refuse to accept delivery of the returned unit unless the assigned RA number appears on the outside of the shipping carton.

Owner's Information
(Keep for your permanent records)

NAME: _____

ADDRESS: _____

CITY: _____ STATE: _____ ZIP CODE: _____

PHONE: _____ E-MAIL: _____

MODEL: _____ SERIAL NO.: _____

