

USING THE POWER BLENDER & PROCESSOR PITCHER & DOUGH BLADE ASSEMBLY

IMPORTANT: As a safety feature, when the unit is powered on, if the pitcher and lid are not properly installed, the timer will display “-” and the motor will be disabled. If this happens, repeat step 5. When the pitcher and lid are properly installed, and the unit is powered on, the program button LEDs will illuminate, indicating the appliance is ready to use.

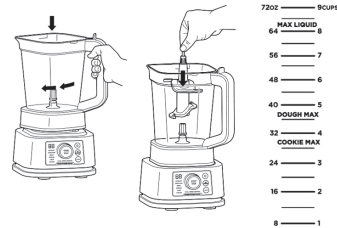
NOTE: Auto-iQ® programs have pauses and changes in speed throughout the cycle.

NOTE: **DO NOT** add ingredients before completing installation of the Dough Blade Assembly.

NOTE: If the Dough Blade Assembly is not fully seated, you will not be able to install and lock the lid.

NOTE: The pitcher lid handle will not fold down unless it is attached to the pitcher.

- 1 Plug in motor base and place on a clean, dry, level surface such as a countertop or table.
- 2 Lower the Pitcher onto the motor base. The handle should be aligned slightly to the right and the pitcher should be oriented so the **LOCK** symbols are visible on the motor base. Rotate the pitcher clockwise until it clicks into place.
- 3 Exercising care, grasp the Dough Blade Assembly by the top of the shaft and place it onto the drive gear inside the pitcher. Note that the blade assembly will fit loosely onto the drive gear.
- 4 Add ingredients to the pitcher. **DO NOT** add ingredients past the **DOUGH MAX** or **COOKIE MAX** line on the pitcher.

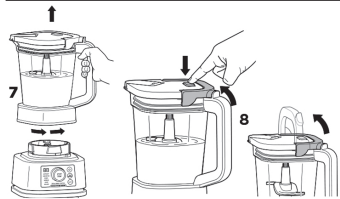


5 Place the lid on the pitcher. Press down on the handle until it clicks into place. Once the lid is locked in place, press the Power button to turn unit on. The available program buttons will illuminate and the unit will be ready for use.

6a If using an Auto-iQ® program, use the dial to select DOUGH, then press START/STOP. The preset feature will automatically stop at the end of the program. To stop the unit at any time, press START/STOP.

6b For Manual mode, press IQ/MANUAL. Use the dial to select speeds 1 or 2, and press START/STOP. Once the ingredients have reached your desired consistency, press START/STOP, and wait for the unit to come to a complete stop.

IMPORTANT: Only use speeds 1 or 2 when using the Dough Blade Assembly.



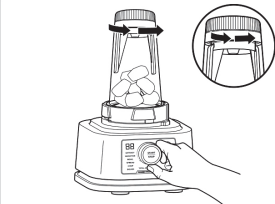
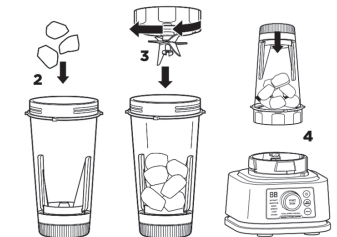
- 7 Remove the pitcher from the motor base by turning it counterclockwise and then lifting up.
- 8 Remove the lid and Dough Blade Assembly before removing contents. To remove the lid, press the **RELEASE** button and lift the handle. To remove the blade assembly, carefully grasp it by the top of the shaft and pull straight up. The pitcher can then be emptied.
- 9 Turn the unit off by pressing the Power button. Unplug the unit when finished. Refer to the Care & Maintenance section for cleaning and storage instructions.

USING THE XL SMOOTHIE BOWL MAKER

NOTE: If the unit is plugged in and powered on, but the cup and blade assembly is not properly installed, the timer will display “-” and the motor will be disabled.

NOTE: Auto-iQ® programs have pauses and changes in speed throughout the cycle.

- 1 Plug in motor base and place on a clean, dry, level surface such as a countertop or table.
- 2 Add ingredients to the XL Smoothie Bowl Maker. **DO NOT** add liquid past the **LIQUID FILL** line or ingredients past the **MAX FILL** line.
- 3 Place the Hybrid Edge™ Blades Assembly on the top of the bowl and turn clockwise to seal.
- 4 Turn the bowl upside down and install on motor base by aligning the tabs on the bowl with the slots on the base. Then, rotate bowl clockwise until it clicks. Once locked in place, press the Power button to turn unit on. The available program buttons will illuminate and the unit will be ready for use.

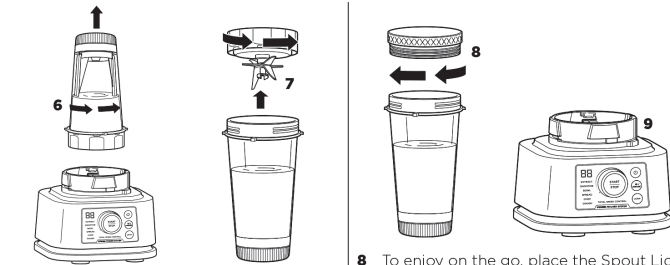


NOTE: While processing, twist the paddle *counterclockwise* continuously.

5a If using an Auto-iQ program, use the dial to select the program that best suits your desired output, then press START/STOP. During the blending process, ensure to twist the Power Paddle *counterclockwise* continuously. The preset feature will automatically stop at the end of the program. To stop the unit at any time, press START/STOP.

5b For Manual mode, press IQ/MANUAL. With speed 8 on the display, press START/STOP. During the blending process, twist the Power Paddle *counterclockwise* continuously. Once the ingredients have reached your desired consistency, press START/STOP and wait for the unit to come to a complete stop.

NOTE: Only speed 8 is available when using the XL Smoothie Bowl Maker.



6 Remove the bowl from the motor base by turning it counterclockwise and then lifting up.

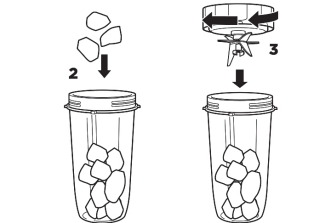
7 Remove the blade assembly by twisting counterclockwise. **DO NOT** store blended contents with the blade assembly attached. Only use the Spout Lid or Storage Lid to cover. Exercise care when handling the blade assembly, as the blades are sharp.

USING THE NUTRIENT EXTRACTION* CUP

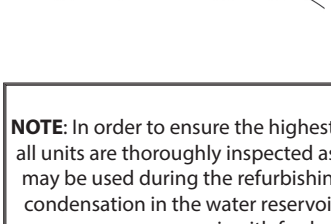
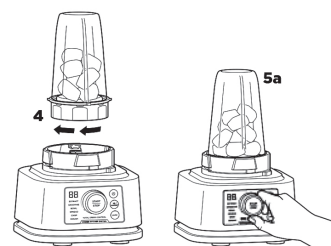
NOTE: If the unit is plugged in and powered on, but the cup and blade assembly is not properly installed, the timer will display “-” and the motor will be disabled.

NOTE: Auto-iQ® programs have pauses and changes in speed throughout the cycle.

- 1 Plug in motor base and place on a clean, dry, level surface such as a countertop or table.
- 2 Add liquid then ingredients to the Single-Serve Cup. **DO NOT** add ingredients past the **MAX LIQUID** line.
- 3 Place the Hybrid Edge™ Blades Assembly on the top of the cup and turn clockwise to seal.



4 Turn the cup upside down and install on the motor base by aligning the tab on the cup with the slots on the base. Then, rotate cup clockwise until it clicks. Once locked in place, press the Power button to turn unit on. The available program buttons will illuminate and the unit will be ready for use.



NOTE: In order to ensure the highest possible standard for refurbished items, all units are thoroughly inspected as part of the process. For this item, water may be used during the refurbishing process and so; you may notice some condensation in the water reservoir. It is recommended to rinse the water reservoir with fresh water prior to its first use.

CARE & MAINTENANCE

USING THE BLENDER FOR STUCK-ON INGREDIENTS

NOTE: For best results, use a dishwasher to remove stuck-on ingredients.

- 1 After processing, immediately clean the container and blade assembly under warm, soapy water.
- 2 Depending on the container, fill with soap and water according to the following instructions:

Pitcher:



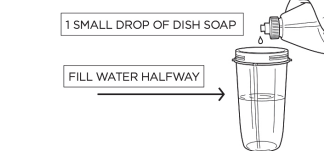
With the dough or stacked blade assembly installed, fill with warm water up to DOUGH MAX line and add 1 or 2 small drops dish soap. Secure pitcher lid, and ensure the pour spout is securely closed.

XL Smoothie Bowl Maker:



Fill with warm water up to top of Power Paddle and add 1 or 2 small drops dish soap. Install blade assembly.

Single-Serve Cup:



Fill halfway with warm water and add 1 small drop dish soap. Install blade assembly.

- 3 Install the container on the motor base. Select BOWL, then press START/STOP.

NOTE: If using the XL Smoothie Bowl Maker, twist the Power Paddle *counterclockwise continuously* while cleaning.

- 4 Once program is complete, thoroughly rinse container and blade assembly under warm, soapy water. Use a cleaning brush to remove any remaining residue.

TROUBLESHOOTING GUIDE

WARNING: To reduce the risk of shock and unintended operation, turn power off and unplug unit before troubleshooting.

Display reads “-”.

- If the display reads “-”, install a container and the available program buttons will illuminate, indicating the unit is ready for use. Ensure the lid is fully engaged and the container has been rotated clockwise and clicked to lock into place.

Display reads “E1”.

- If the display reads “E1”, unplug the unit from the electrical outlet and allow it to cool for 15 minutes. Remove the blade assembly and empty the contents to ensure no ingredients are jamming the blade assembly.

Display reads “E2”.

- If the display reads “E2” unplug the unit from the electrical outlet and allow it to cool for 5 minutes. Remove the blade assembly and empty the contents to ensure no ingredients are jamming the blade assembly. If output is too thick and ingredients are not processing properly, add more liquid.

Blade speed sometimes changes when blending thinner ingredients.

- When using speed 7 or 8 with the Power Pitcher, you may notice a change in the blade speed when blending thinner ingredients. This is due to the smart technology in the blender and is part of the unit's normal operation.

CLEANING

Hand-Washing

Wash containers, lids, and blade assemblies in warm, soapy water. Use a dishwashing utensil with handle to avoid direct contact with the blades. Use a cleaning brush to remove excess residue, such as when dealing with stuck-on ingredients, like doughs and batters. Exercise care when handling the blade assembly as the blades are sharp. Thoroughly rinse and air-dry all parts.

NOTE: The Power Paddle in the XL Smoothie Bowl Maker is not removable.

Dishwasher

Containers, lids, and blade assemblies are dishwasher safe. Ensure the blade assembly and lid are removed from the container before placing in the dishwasher.

NOTE: For best results, use a dishwasher to remove stuck-on ingredients.

Motor Base

Unplug the motor base before cleaning. Wipe motor base with a clean, damp cloth. **DO NOT** use abrasive cloths, pads, or brushes to clean the base.

STORING

For cord storage, wrap cord with hook-and-loop fastener near the back of the motor base. **DO NOT** wrap the cord around the bottom of the base for storage.

DO NOT store blended or unblended ingredients in the cup or bowl with the blade assembly attached.

DO NOT stack items on top of the containers. Store any remaining attachments alongside the unit or in a cabinet where they will not be damaged or create a hazard.

RESETTING THE MOTOR

This unit features a unique safety system that prevents damage to the motor and drive system should you inadvertently overload it. If the unit is overloaded, the motor will be temporarily disabled. Should this occur, follow the reset procedure below.

- 1 Unplug the unit from the electrical outlet.
- 2 Allow the unit to cool for approximately 15 minutes.
- 3 Remove the container's lid and blade assembly. Empty the container and ensure no ingredients are jamming the blade assembly.

IMPORTANT: Ensure that maximum capacities are not exceeded. This is the most typical cause of appliance overload.

Unit doesn't mix well; ingredients get stuck.

- Using the Auto-iQ® programs is the easiest way to achieve great results. The pulses and pauses allow the ingredients to settle toward the blade assembly. If ingredients are routinely getting stuck, adding some liquid will usually help.
- When filling the cup, start with fresh fruit or veggies, then leafy greens or herbs. Next add liquids or yogurt, then seeds, powders, or nut butters. Finally, add ice or frozen ingredients.
- If using the XL Smoothie Bowl Maker, during the blending process twist the Power Paddle counterclockwise continuously to circulate ingredients.

Unit moves on counter while blending.

- Make sure the surface and feet of the unit are clean and dry.

Preset program will not work.

- The unit can detect which container is on the motor base. You may be trying to use a program that is not designed for the container you have installed. The programs will light up, indicating which programs are available for each container.

Food is not evenly chopped.

- For best results when chopping, cut pieces of ingredients in a uniform size and don't overflow the Power Pitcher.

Can't remove the Power Paddle from the XL Smoothie Bowl Maker

- The Power Paddle in the XL Smoothie Bowl Maker, is not removable. For cleaning instructions, refer to the Care & Maintenance section.

Can only select speed 8 in Manual Mode when using the XL Smoothie Bowl Maker or Single-Serve Cup.

- Only speed 8 is available when using the XL Smoothie Bowl Maker or Single-Serve Cup. All 8 speed ranges are available when using the Pitcher and Stacked Blade Assembly. **IMPORTANT:** Only use speeds 1 or 2 when using the Dough Blade Assembly.

REFURBISHED PRODUCT LIMITED NINETY DAYS WARRANTY

The **Refurbished Product Service Center** offers the following WARRANTY to the ORIGINAL purchaser of a product which we have refurbished.

This product that has been refurbished is warranted against any electronic or mechanical defects for a period of NINETY DAYS from the date of the original purchase by the consumer. Since this unit was sold as a refurbished item, the warranty does not apply to any cosmetic appearance items such as scratches. Should a defect occur, the **Refurbished Product Service Center** will repair or, at its option, replace defective unit/parts with new or rebuilt materials without charge for either parts or labor. Replacement unit/parts will be warranted for the remaining portion of the original warranty period.

This warranty does not cover installation or damage from accident, misuse, abuse, improper wiring, incorrect voltage, operating the unit against the instructions in the owner's manual or any product which has been opened, altered, or tampered with.

This warranty does not cover costs for removal and or installation of the unit for repair. Under no circumstances shall the service center be liable for any special, incidental or consequential damages or for any other expenses incurred by reason of use or sale of this product. This warranty is in lieu of any other warranties expressed or implied warranty of merchantability of fitness for particular use or otherwise.

This warranty gives the consumer specific legal rights and they may also have other rights which vary from State to State. Some States do not follow the exclusion or limitation of incidental or consequential damages, hence the above exclusion and limitations may not apply.

Refurbished Product Service Center
13225 Marquardt Avenue Santa Fe Springs, CA 90670.

WARRANTY REPAIR INFORMATION

If you need service on your unit and this product requires repair during the 90 days warranty period; please go to www.ConsumerServiceRefurbish.com or call the **Refurbished Product Service Center** at 562-946-3531 to obtain the required return authorization (RA) number. Pack the unit properly (the original carton is ideal for this purpose) along with a copy of your purchase receipt and a letter describing the problem. Send the unit freight prepaid and insured to:

Refurbished Product Service Center,
Att: Customer Service Department 13225 Marquardt Avenue Santa Fe Springs, CA 90670

Your unit will be promptly repaired and returned to you. We will refuse to accept delivery of the returned unit unless the assigned RA number appears on the outside of the shipping carton.

Owner's Information
(Keep for your permanent records)

NAME: _____

ADDRESS: _____

CITY: _____ STATE: _____ ZIP CODE: _____

PHONE: _____ E-MAIL: _____

MODEL: _____ SERIAL NO.: _____