

# Shark FlexStyle™

81410067

## IMPORTANT SAFETY INSTRUCTIONS

When using electrical appliances, especially when children are present, basic safety precautions should always be followed, including the following:

### FOR HOUSEHOLD USE ONLY

READ ALL INSTRUCTIONS BEFORE USING—SAVE THESE INSTRUCTIONS

#### WARNINGS: KEEP AWAY FROM WATER

#### DANGER-

As with most electrical appliances, electrical parts are electrically live even when the switch is off.

#### ⚠ WARNING

To reduce the risk of death by electric shock:

1. Always unplug the unit immediately after using.
2. Do not use while bathing.
3. Do not place or store appliance where it can fall or be pulled into a tub or sink.
4. Do not place in or drop into water or other liquid.
5. If an appliance falls into water, unplug the unit immediately. Do not reach into the water.

#### ⚠ WARNING

To reduce the risk of burns, electrocution, fire, or injury to persons:

1. An appliance should never be left unattended when plugged in.
2. Close supervision is necessary when this appliance is used by, on, or near children or individuals with certain disabilities.
3. Use this appliance only for its intended use as described in this manual. Do not use attachments not recommended by the manufacturer.
4. Never operate this appliance if it has a damaged cord or plug, if it is not working properly, or if it has been dropped, damaged, or dropped into water.
5. Keep the cord away from heated surfaces.
6. Do not wrap the cord around the appliance.
7. Never block the air openings of the appliance or place it on a soft surface, such as a bed or couch, where the air openings may be blocked. Keep the air openings free of lint, hair, and the like.
8. Never use while sleeping.
9. Never drop or insert any object into any opening.
10. Do not use outdoors or operate where aerosol (spray) products are being used or where oxygen is being administered.
11. Do not use an extension cord with this appliance.
12. Do not direct hot air toward eyes or other heat-sensitive areas.
13. Attachments may be hot during use. Allow them to cool before handling.
14. Do not place appliance on any surface while it is operating.
15. While using the appliance, keep your hair away from the air inlets.
16. Do not operate with a voltage converter.

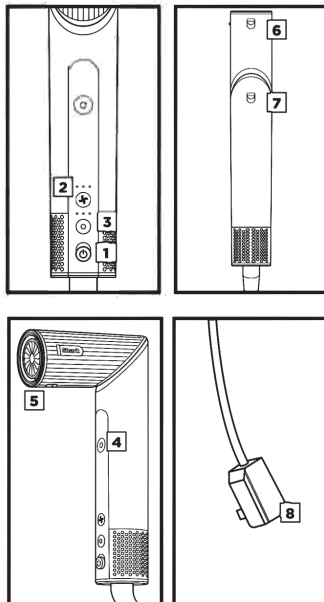
## SAVE THESE INSTRUCTIONS

### OPERATING INSTRUCTIONS

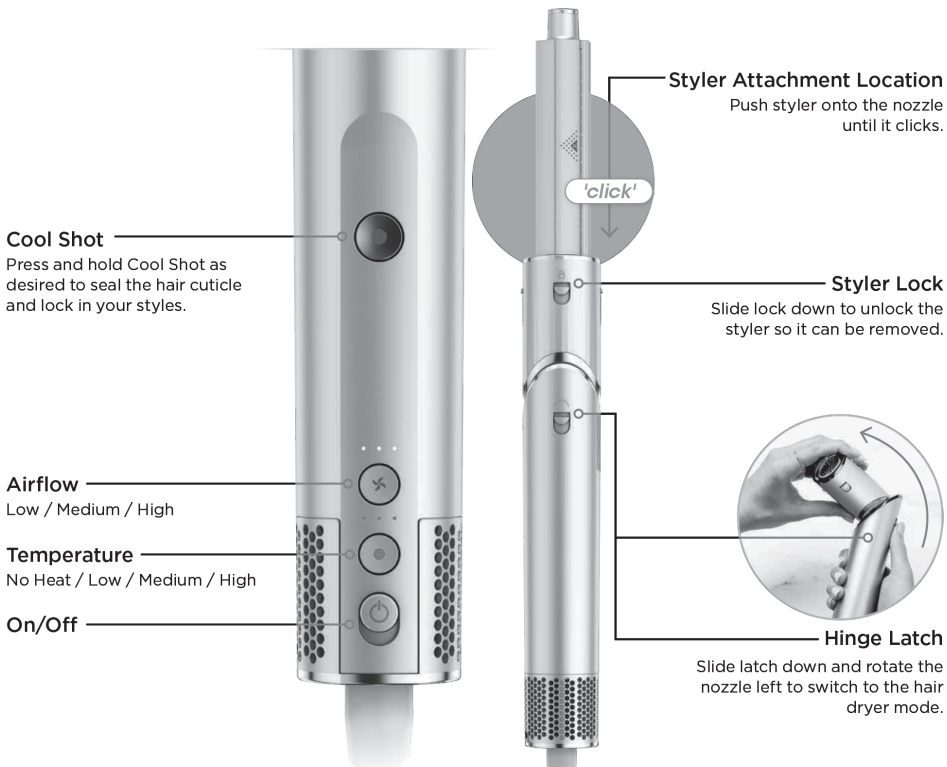
1. Turn the styler on and off.
2. Adjust the airflow. Pressing the button allows you to choose a low, medium, or high airflow.
3. Adjust the temperature. Pressing the button allows you to choose no heat, low, medium or high temperature.
4. Press and hold the Cool Shot button for a cool burst of air to set your style.
5. To attach any accessories included with your model, press them into the nozzle outlet. You will know they are properly attached when they click in place.
6. To remove any accessories included in your model, slide the lock down and lift the accessory off of the nozzle by holding onto the touchpoints identified in your Style Guide.
7. To change from styling wand mode to hair dryer mode, slide down the lock and rotate the nozzle left. Keep rotating the nozzle until it clicks into place in hair dryer mode. To change from hair dryer mode to styling wand mode, slide down the lock and rotate the nozzle right.
8. Press the ALCI button to rest the dryer. See Troubleshooting & Error Codes for more information.

#### Storage, Cord Safety, and Maintenance/Cleaning:

- Ensure the cord is not knotted, twisted, or wrapped around any nearby objects when in use.
- Store the unit in a dry location away from water and other heat sources.
- Regularly clean the filter at the bottom of the unit. To clean the filter, first slide the filter cover off the bottom of the unit. Then use a new toothbrush to brush off any dust or debris on the filter. Once the filter is clean, slide the filter cover back on the unit until it clicks in place.



## How it works



**TIP:** All 3 red Temperature lights will be OFF when Cool Shot is engaged.

## Transform from styler to dryer.

Rotates to change modes

Styling Wand Mode / Hair Dryer Mode



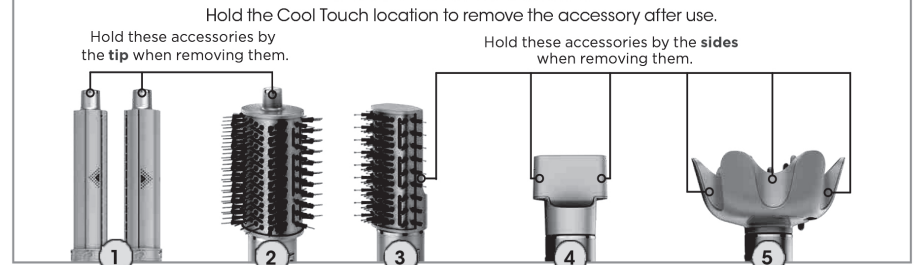
**NOTE:** Accessories may vary depending on the model.

## Get to know your stylers.

1. **Auto-Wrap Curlers**  
*Hassle-free curls in seconds.*  
• Uses air power to automatically wrap hair around the barrel, from ends to roots  
• 2 curler barrels to create curls in both directions
2. **Oval Brush**  
*Smooths & defrizzes, adds volume & bounce*  
Smoothing bristles—on the rounded edge for grabbing, smoothing, and shining  
Detangling bristles—in the middle for combing and detangling
3. **Paddle Brush**  
*Straighten & smooth all at once*  
Smoothing bristles—to create added tension for straightening, smoothing, and shining  
Detangling bristles—for combing and detangling
4. **Styling Concentrator**  
*Style & dry at the same time*  
Rotates for easy styling
5. **Curl-Defining Diffuser**  
*Fast, even drying from root to tip*  
Use the lever to extend or retract the prongs for a customizable airflow  
Extended prongs—for longer, thicker hair or reaching and lifting the roots  
Retracted prongs—for shorter, finer hair or if the ends need a little extra air

SOLD SEPARATELY

### Cool Touch Locations

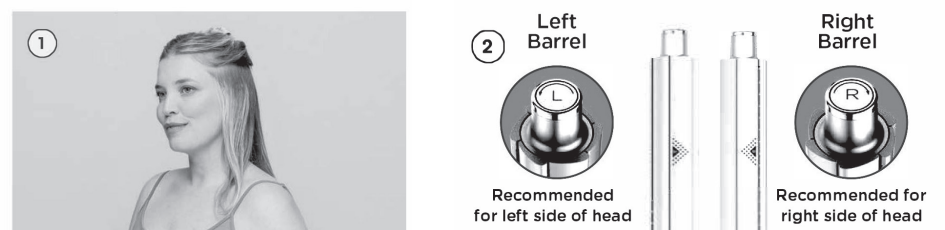


\* Sold separately  
\* Colors and Accessories may vary

## Change the way you curl.™

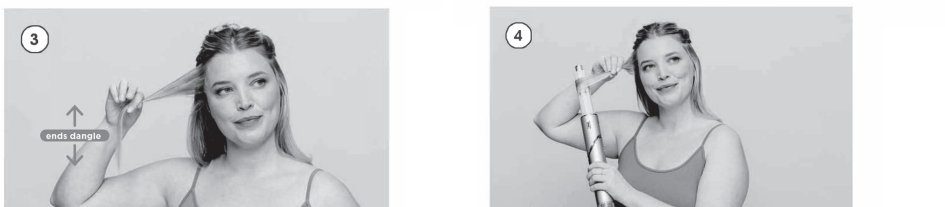
Recommended Setting: ✖ air ●●●●● temp ●●●●●

### Auto-Wrap Curlers

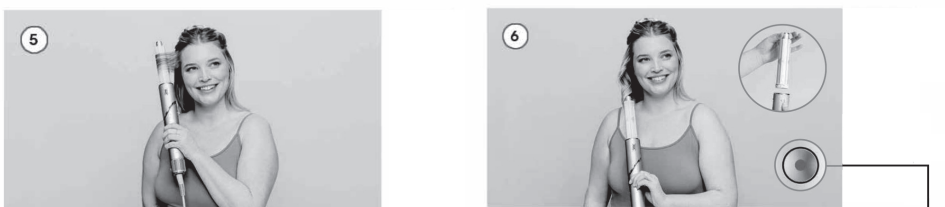


Begin with **slightly damp hair**. Separate the **top and bottom sections** of your hair.  
Pro Tip: Apply hair products or styling agents as desired.

Select the direction of the curls by choosing the corresponding barrel.



Pro tip: Grab a section of hair that is a consistent length.



Pro Tip: Use a setting or holding spray as desired for an even longer-lasting look.

- Additional Styling Tips:**
- Take smaller sections and make sure your hair isn't too wet if it is having difficulty wrapping around the barrel.
  - Use sectioning clips to prevent unwanted hair from being wrapped around the barrel.
  - Test different moisture levels to understand the level of moisture that works best for your hair type.

## Turn up the volume.

**Recommended Setting:** ✨ air ●●○ ●●○ temp ●

### Oval Brush



Begin with **rough-dried or towel-dried hair**.  
Pro Tip: Apply hair products or styling agents as desired.



Section your hair as desired. For voluminous blowouts, start by placing the round brush **under the hair close to the roots**.  
Pro Tip: For even more volume, hold the brush under your hair close to the roots for 3 seconds before brushing outward.



Roll the brush **outward** from the roots to the ends to engage the bristles and gently grip the hair.  
Pro Tip: For extra volume, brush your hair in an upward direction.



Repeat on remaining sections until hair has been dried into a bouncy, voluminous style.  
Pro Tip: Set your style and help reduce frizz by pressing the **Cool Shot button**.

**Additional Styling Tips:**

- If you have fine hair, try reducing the airflow to help cut down on frizz.
- If you have thick hair, try increasing the heat for even faster results.
- If you have curly or coily hair, try increasing the heat to help achieve a straighter style.
- For an added curl, place the brush under the ends of the hair and roll the brush toward the roots to engage the bristles. Twist the hair off the brush to release the curl.

## Perfect sleek, straight styles.

**Recommended Setting:** ✨ air ●●● ●●○ temp ●

### Paddle Brush



Begin with **rough-dried or towel-dried hair**. Section your hair as desired.  
Pro Tip: Apply hair products or styling agents as desired.



For a smooth, sleek style, start by placing the brush **close to the roots** to engage the detangling bristles.



Brush down your hair, making sure to engage the smoothing bristles, and gently grip the hair.  
Pro Tip: Hold the ends of your hair while brushing for added tension and smoothing.



Repeat on remaining sections until hair has been dried into a smooth, straight style.  
Pro Tip: Set your style and help reduce frizz by pressing the **Cool Shot button**.

**Additional Styling Tips:**

- If you have fine hair, try reducing the airflow to help cut down on frizz.
- If you have thick hair, try brushing smaller sections for smoother results.
- If you have curly or coily hair, try repeatedly brushing smaller sections and increasing the heat to help achieve a straighter style.
- For added volume, place the brush under the hair section close to the roots and brush upward using a rounding motion.

## Master smooth, stylish blowouts.

**Recommended Setting:** ✨ air ●●● ●●○ temp ●

### Styling Concentrator



Begin with **rough-dried or towel-dried hair**.  
Pro Tip: Apply hair products or styling agents as desired.



Section your hair as desired and start styling with a round brush. **Rotate the concentrator** so airflow is always in line with the round brush.

NOTE: Accessories may vary depending on the model.

The images shown here are for illustrative purposes only and may be subject to change.

TECHNICAL SPECIFICATIONS Voltage: 120V~, 60Hz



Apply heat in a **downward motion** for smoothing.  
Pro Tip: Apply heat at ends for shaping and bending.



Finish styling by setting shape at ends and pressing the **Cool Shot button**.

**Additional Styling Tips:**

- If you have fine hair, try reducing the airflow to help cut down on frizz.
- To create a curl, wrap your hair around a round brush and dry it in place using the concentrator.
- For added volume, place a round brush under the roots and brush upward while drying with the concentrator.
- For an added curl at the ends, roll the ends of the hair onto a round brush and dry in place using the concentrator.

SOLD SEPARATELY

## Define your natural curls.

**Recommended Setting:** ✨ air ●○○ ●○○ temp ●

### Curl-Defining Diffuser



Begin with **towel-dried hair**. Working around your head, bunch curls from ends between the petals of the diffuser.

Pro Tip: Apply curly hair products or styling agents as desired to wet hair.



Bring the diffuser up to the roots. Pause and hold.



For more volume, slide the lever to **extend prongs to lift roots higher**.

Pro Tip: Gather hair in diffuser with prongs retracted, then extend them when you reach the roots to increase grab and maximize airflow.



If desired, **flip upside down and bunch from below** for extra volume.

Pro Tip: Keep the integrity of your natural curls by switching between Low temp and the **Cool Shot button**.

**Additional Styling Tips:**

- Apply curly hair products to wet hair before drying to help define your curls and cut down on frizz.
- If you have thick hair, try increasing the heat for even faster results.

## TROUBLESHOOTING & ERROR CODES

**MAINTENANCE/CLEANING**

**Reduction in Airflow or Overheating**

A change in airflow or air power, airflow blockages, and/or visible buildup on the inlet at the bottom of the unit indicates your unit needs to be cleaned. We recommend using a new toothbrush to clean off the filter at the bottom of the unit.

**ALCI OPERATION**

**Electricity flickers or trips circuit breaker during use.**

This dryer is equipped with an Appliance Leakage Circuit Interrupter (ALCI), a safety feature that renders it inoperable under abnormal conditions. Should the dryer turn off in use, press the red Reset button on the plug and the dryer should function normally. If the dryer does not reset, please check your circuit breaker. If the issue persists, ensure there are no other appliances plugged in within the room where the dryer is being used. Do not use the dryer with a power strip.

**OVERHEATING**

**Hair dryer is overheating or shuts off.**

This unit is equipped with a temperature-protective thermostat. If for some reason your hair dryer overheats, the thermostat will automatically turn the unit off. To prevent power-down recurrence, unplug the hair dryer and set it aside to cool, or cool down using the cool shot button during use. Overheating may result if the unit is powered on for a long duration, or can indicate a blockage or dust buildup. We recommend using a new toothbrush to clean off the filter at the bottom of the unit. If overheating continues to occur, contact a service center.

**Overheating Error Code**



If you are experiencing a different error code, please scan the QR code for additional troubleshooting or contact a service center.

### REFURBISHED PRODUCT LIMITED NINETY DAYS WARRANTY

The **Refurbished Product Service Center** offers the following WARRANTY to the ORIGINAL purchaser of a product which we have refurbished.

This product that has been refurbished is warranted against any electronic or mechanical defects for a period of NINETY DAYS from the date of the original purchase by the consumer. Since this unit was sold as a refurbished item, the warranty does not apply to any cosmetic appearance items such as scratches. Should a defect occur, the **Refurbished Product Service Center** will repair or, at its option, replace defective unit/parts with new or rebuilt materials without charge for either parts or labor. Replacement unit/parts will be warranted for the remaining portion of the original warranty period.

This warranty does not cover installation or damage from accident, misuse, abuse, improper wiring, incorrect voltage, operating the unit against the instructions in the owner's manual or any product which has been opened, altered, or tampered with.

This warranty does not cover costs for removal and or installation of the unit for repair. Under no circumstances shall the service center be liable for any special, incidental or consequential damages or for any other expenses incurred by reason of use or sale of this product. This warranty is in lieu of any other warranties expressed or implied warranty of merchantability of fitness for particular use or otherwise.

This warranty gives the consumer specific legal rights and they may also have other rights which vary from State to State. Some States do not follow the exclusion or limitation of incidental or consequential damages, hence the above exclusion and limitations may not apply.

Refurbished Product Service Center  
13225 Marquardt Avenue Santa Fe Springs, CA 90670.

### WARRANTY REPAIR INFORMATION

If you need service on your unit and this product requires repair during the 90 days warranty period; please go to [www.ConsumerServiceRefurbish.com](http://www.ConsumerServiceRefurbish.com) or call the **Refurbished Product Service Center** at 562-946-3531 to obtain the required return authorization (RA) number. Pack the unit properly (the original carton is ideal for this purpose) along with a copy of your purchase receipt and a letter describing the problem. Send the unit freight prepaid and insured to:

**Refurbished Product Service Center,**  
Att: Customer Service Department 13225 Marquardt Avenue  
Santa Fe Springs, CA 90670

Your unit will be promptly repaired and returned to you. We will refuse to accept delivery of the returned unit unless the assigned RA number appears on the outside of the shipping carton.

**Owner's Information**  
(Keep for your permanent records)

NAME: \_\_\_\_\_  
ADDRESS: \_\_\_\_\_  
CITY: \_\_\_\_\_  
STATE: \_\_\_\_\_  
ZIP CODE: \_\_\_\_\_  
PHONE: \_\_\_\_\_  
E-MAIL: \_\_\_\_\_  
MODEL: \_\_\_\_\_  
SERIAL NO.: \_\_\_\_\_

8 1 4 1 0 0 0 6 7



PRINTED IN MEXICO / SC: 27-05-2023  
Shnmdl: HD430\_B / Add:HD435 / Pags:TAB / Elbr:J.E.  
Obpn: HD400Series\_Warning\_Insert\_E\_F\_S\_MP\_MV6\_220825