

NINJA®

FIT BLENDER

OWNER'S GUIDE

"Recipe book is not included"



804107885

IMPORTANT SAFETY INSTRUCTIONS

For Household Use Only

WHEN USING ELECTRICAL APPLIANCES, BASIC SAFETY PRECAUTIONS SHOULD ALWAYS BE FOLLOWED, INCLUDING THE FOLLOWING:

READ ALL INSTRUCTIONS BEFORE USING YOUR NINJA® FIT.

POLARIZED PLUG

⚠WARNING: To reduce the risk of electric shock, this appliance has a polarized plug (one blade is wider than the other). This plug will fit into a polarized outlet only one way. If the plug does not fit fully into the outlet, reverse the plug. If it still does not fit, contact a qualified electrician to install the proper outlet. DO NOT modify the plug in any way.

⚠WARNING: Extension cords are not recommended for use with this product.

⚠WARNING: TO REDUCE THE RISK OF FIRE, ELECTRIC SHOCK OR INJURY:

- ⚠ WARNING:** Remove utensils prior to processing. Failure to remove may cause the jar to be damaged or to shatter which may cause personal injury.
- ⚠ CAUTION:** Do not blend hot liquids, doing so may cause excessive pressure build-up, resulting in risk of the user being burned.
- ⚠ CAUTION:** We do not recommend grinding in any of our Nutri Ninja® Cups
- ⚠ CAUTION:** Remove the Nutri Ninja Blade Assembly from the Nutri Ninja cup upon completion of blending.

Do not store ingredients before or after blending them in the cup with the blade assembly attached. Some foods may contain active ingredients or release gases that will expand if left in a sealed container, resulting in excessive pressure buildup that can pose a risk of injury. For ingredient storage in the cup, use only Sip & Seal Lid to cover.

- To protect against electric shock, **DO NOT** immerse cord, plug or any part of the main unit in water or any other liquids.
- Do not allow the appliance to be used by children. Close attention is necessary when used near children. This is not a toy.
- DO NOT** let cord hang over edge of table or counter, or touch hot surfaces including the stove.
- Never leave an appliance unattended when in use.
- DO NOT** operate any appliance with a damaged cord or plug, or after the appliance malfunctions, has been dropped or damaged in any manner.
- DO NOT** abuse the power cord. Never carry the appliance by the power cord or yank it to disconnect from electrical outlet; instead grasp the plug and pull to disconnect.
- Unplug appliance from outlet when not in use, before putting on or taking off parts and before cleaning.
- DO NOT** operate this appliance on or near any hot surfaces (such as gas or electric burner, or in a heated oven).
- The use of accessory attachments, including canning jars is not recommended by SharkNinja Operating LLC and may cause fire, electrical shock or risk of personal injury.

- Always use this appliance on a dry, stable work surface away from water.
- DO NOT attempt to sharpen blades.**
- DO NOT** block the vents on the Power Pod when using the appliance.
- DO NOT** expose Nutri Ninja™ Cups to extreme temperature changes.
- DO NOT** use Nutri Ninja Cups if they are cracked or chipped.
- DO NOT** use the appliance if blades are bent or damaged.
- Avoid contact with moving parts at all times. Keep hands, hair, clothing as well as spatulas and other utensils away from Nutri Ninja Cup and Power Pod during operation to prevent risk of personal injury and/or damage to the appliance. A scraper may be used only when the appliance is not running.
- DO NOT** overfill.
- DO NOT** try to defeat the interlock mechanism. Make sure that the Nutri Ninja Blade Assembly is properly screwed on the Nutri Ninja Cup before operating the appliance.
- DO NOT** operate the appliance empty.
- If the appliance overheats, a thermal switch will become activated and shut off the motor. To reset, unplug the appliance and let it cool down for approximately 15 minutes before using again.
- THIS PRODUCT IS INTENDED FOR HOUSEHOLD USE ONLY.** Do not use this appliance for anything other than its intended use. Do not use outdoors.
- The maximum rating is based on the 16 oz Nutri Ninja Cup. This drives the greatest power.

SAVE THESE INSTRUCTIONS

THIS BOOK COVERS MODEL NUMBERS:

QB3000SS
QB3000SSW
QB3001SS

TECHNICAL SPECIFICATIONS

Voltage: 120 V, 60 Hz.
Power: 700 Watts
Nutri Ninja® Cup Capacity: 16 oz. (2 cups, 500 mL)

Thank you for purchasing the Ninja® Fit.

The Ninja® Fit is a fast and easy way to prepare delicious smoothies and prep for quick, meals and snacks—in just a matter of seconds! For best results, be sure to carefully read all the instructions contained in the manual before using this appliance.



FEATURES:

- Single Serve Blending in 16 oz. Nutri Ninja® Cups
- All components are BPA free and dishwasher safe, except for the power pod which is not dishwasher safe

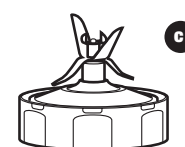
NOTE: Accessories may vary depending on the model.

Getting To Know Your Ninja® Fit



NOTE: Accessories may vary depending on the model.

The images shown here are for illustrative purposes only and may be subject to change.



- a Power Pod
- b Nutri Ninja® Cup (x2)
- c Nutri Ninja Blade Assembly
- d Sip & Seal Lid (x2)

Before First Use

PLEASE KEEP THESE IMPORTANT SAFEGUARDS IN MIND WHEN USING THE APPLIANCE:

IMPORTANT: Make sure that the power pod is plugged in for use.

IMPORTANT: DO NOT attempt to operate the appliance without the lid on.

IMPORTANT: Never run the appliance empty.

IMPORTANT: Appliance accessories are not intended to be used in the microwave as it may result in damage to the accessories.

CAUTION: Do not immerse the power pod into water or any other liquid.

1 Remove all packaging material and labels from the appliance. Separate/remove all parts from each other.

2 Wash the Sip & Seal lids, Nutri Ninja® cups and Nutri Ninja blade assembly in warm, soapy water. When washing the Nutri Ninja blade assembly, use a dish-washing utensil with a handle to avoid direct hand contact with blades.

WARNING: Handle the Nutri Ninja blade assembly with care when washing, as the blades are very sharp.

3 Handle Nutri Ninja blade assembly with care to avoid contact with sharp edges. Rinse and air dry thoroughly.

4 The Nutri Ninja® cups, lids and Nutri Ninja blade assembly are all dishwasher safe. It is recommended that the lids and blade assembly be placed on the top rack. Ensure that the blade assembly is removed from the cup before placing in the dishwasher.

5 Wipe the power pod clean with a damp cloth.

Cleaning and Maintenance

HOW TO CLEAN

CAUTION: Make sure that the Power Pod is unplugged from the power source before inserting or removing any attachment or blade assembly and before cleaning.

CAUTION: DO NOT immerse the Power Pod in water or any other liquid.

1 Separate/remove all parts from each other.

2 **Hand Washing:** Wash lids, Nutri Ninja® Cups and Nutri Ninja Blade Assembly in warm, soapy water. When washing the Nutri Ninja Blade Assembly, use a dish-washing utensil with a handle to avoid direct hand contact with blades. Handle Nutri Ninja Blade Assembly with care to avoid contact with sharp edges. Rinse and air dry thoroughly.

Dishwasher: The lids, Nutri Ninja Cups and Nutri Ninja Blade Assembly are all dishwasher safe. It is recommended that the lids and Nutri Ninja Blade Assembly be placed on the top rack. Ensure the Blade Assembly is removed from the cup before placing in the dishwasher.

WARNING: Handle the Nutri Ninja Blade Assembly with care when washing, as the blades are sharp. Contact with the blades' edges can result in laceration.

3 Wipe the Power Pod clean with a damp cloth.

HOW TO STORE

1 Store the Ninja upright with the Nutri Ninja Blade Assembly secured to a Nutri Ninja Cup. Do not place anything on top. Store the rest of the attachments in a safe place where they will not be damaged and won't cause harm. Loosely wrap the power cord around the Power Pod.

NOTE: Do not store blended or unblended ingredients in the Nutri Ninja Cup with the blade assembly attached.

RESETTING THE MOTOR THERMOSTAT

The **Ninja** features a unique safety system which prevents damage to the unit's motor and drive system should it be inadvertently overloaded. If the appliance is being overloaded, the motor will stop. To reset the appliance, follow the resetting procedure below:

- 1 Unplug the appliance from the electrical outlet.
- 2 Remove the cup from the Power Pod, empty the container and ensure that no food is jamming the blade assembly.
- 3 Allow the appliance to cool for approximately 15 minutes.
- 4 Refill the cup, place the cup in the Power Pod, and re-plug the appliance into the electrical outlet.
- 5 Proceed to use the appliance while making sure not to exceed the recommended maximum capacities.

Troubleshooting Guide

PROBLEMS	POSSIBLE REASONS & SOLUTIONS
Motor doesn't start or Blade Assembly doesn't rotate.	<ul style="list-style-type: none"> • Make sure the Nutri Ninja® Cup is securely placed onto Power Pod. • Check that the plug is securely inserted into the electrical outlet. • Check fuse or breaker in your home. Replace fuse/reset breaker. • Check that the inside of the Power Pod is clean and there is no food blocking the connection between Power Pod and Nutri Ninja Cup. • There is too much food in the container. Unplug the Power Pod. Remove some food and try again. • The unit has overheated. Unplug and wait approximately 15 minutes before using again.
Food is unevenly chopped.	<ul style="list-style-type: none"> • Either too much food is being chopped at one time, or the pieces are not small enough. Try cutting the food into smaller pieces of even size and processing smaller amounts per batch. • Adjust pulse duration or pulse time.
Food is chopped too finely or is too watery.	<ul style="list-style-type: none"> • The food has been overprocessed. Use brief pulses or process for a shorter time. Let blades stop completely between pulses.
Food collects on the sides of the Nutri Ninja™ Cup.	<ul style="list-style-type: none"> • Too much food is being processed at one time. Turn the Power Pod off. When the blades stop rotating, remove the cup from the Power Pod. Remove some of the food being processed.
Snow from ice cannot be achieved.	<ul style="list-style-type: none"> • Do not use ice that has been sitting out or has started to melt. • Be sure to use short pulses in the beginning to break up large pieces.

The images shown here are for illustrative purposes only and may be subject to change.

REFURBISHED PRODUCT LIMITED NINETY DAYS WARRANTY

The **Refurbished Product Service Center** offers the following WARRANTY to the ORIGINAL purchaser of a product which we have refurbished.

This product that has been refurbished is warranted against any electronic or mechanical defects for a period of NINETY DAYS from the date of the original purchase by the consumer. Since this unit was sold as a refurbished item, the warranty does not apply to any cosmetic appearance items such as scratches. Should a defect occur, the **Refurbished Product Service Center** will repair or, at its option, replace defective unit/parts with new or rebuilt materials without charge for either parts or labor. Replacement unit/parts will be warranted for the remaining portion of the original warranty period.

This warranty does not cover installation or damage from accident, misuse, abuse, improper wiring, incorrect voltage, operating the unit against the instructions in the owner's manual or any product which has been opened, altered, or tampered with.

This warranty does not cover costs for removal and or installation of the unit for repair. Under no circumstances shall the service center be liable for any special, incidental or consequential damages or for any other expenses incurred by reason of use or sale of this product. This warranty is in lieu of any other warranties expressed or implied warranty of merchantability of fitness for particular use or otherwise.

This warranty gives the consumer specific legal rights and they may also have other rights which vary from State to State. Some States do not follow the exclusion or limitation of incidental or consequential damages, hence the above exclusion and limitations may not apply.

Refurbished Product Service Center
13225 Marquardt Avenue Santa Fe Springs, CA 90670.

WARRANTY REPAIR INFORMATION

If you need service on your unit and this product requires repair during the 90 days warranty period; please go to www.ConsumerServiceRefurbish.com or call the **Refurbished Product Service Center** at 562-946-3531 to obtain the required return authorization (RA) number. Pack the unit properly (the original carton is ideal for this purpose) along with a copy of your purchase receipt and a letter describing the problem. Send the unit freight prepaid and insured to:

Refurbished Product Service Center,
Att: Customer Service Department 13225 Marquardt Avenue Santa Fe Springs, CA 90670

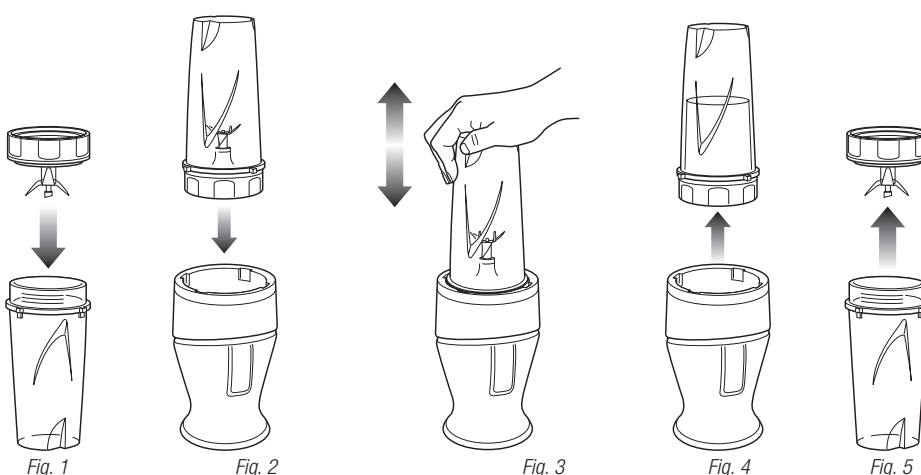
Your unit will be promptly repaired and returned to you. We will refuse to accept delivery of the returned unit unless the assigned RA number appears on the outside of the shipping carton.

Owner's Information
(Keep for your permanent records)

NAME: _____
ADDRESS: _____
CITY: _____ STATE: _____ ZIP CODE: _____
PHONE: _____ E-MAIL: _____
MODEL: _____ SERIAL NO.: _____

Using the Nutri Ninja® Cup

- WARNING:** Handle the Nutri Ninja Blade Assembly with care, as the blades are sharp.
- WARNING:** Remove utensils prior to processing. Failure to remove may cause the Nutri Ninja Cup to be damaged or to shatter, which may cause personal injury.
- WARNING:** Never leave the appliance unattended while in use.
- CAUTION:** Do not blend hot liquids, doing so may cause excessive pressure buildup, resulting in risk of the user being burned.
- CAUTION:** Remove the Nutri Ninja Blade Assembly from the Nutri Ninja cup upon completion of blending. Do not store ingredients before or after blending them in the cup with the blade assembly attached. Some foods may contain active ingredients or release gases that will expand if left in a sealed container, resulting in excessive pressure buildup that can pose a risk of injury. For ingredient storage in the cup, use only Sip & Seal Lid to cover.
- IMPORTANT:** Make sure that the Power Pod is plugged in for use.



Lightbulb icon: For best results when blending drinks or smoothies, press down continuously until desired size and consistency is achieved. For best results when food processing, use short "PULSES" by pushing down on the cup in short, 1 second bursts, until desired consistency is achieved.

- 1 Review warning and caution statements above before proceeding to number 2.
- 2 Place the Power Pod on a clean, dry, level surface such as a counter or table top.
- 3 Add ingredients to the Nutri Ninja Cup.
NOTE: Do not overfill! To avoid spilling, do not add ingredients past the "Max Fill" line.
- 4 Place the Nutri Ninja Blade Assembly onto the cup and screw it tightly until a good seal is achieved. (Fig. 1)
- 5 Turn the Nutri Ninja Cup upside down and place it onto the Power Pod. Press down on the Nutri Ninja Cup to pulse or blend. (Fig. 2, Fig. 3)
- 6 Once desired consistency is reached, remove pressure from the Nutri Ninja Cup. Pull straight up to remove. (Fig. 4)
- 7 Turn the cup upright and remove the Nutri Ninja Blade Assembly by twisting the blade assembly counter clockwise. (Fig. 5)
- 8 Do not store blended contents with the Nutri Ninja Blade Assembly attached.
- 9 Place the Sip & Seal® lid onto the Nutri Ninja Cup, twist to seal and enjoy!
- 10 For storage, only use Sip & Seal lid to cover.
- 11 Be sure to store the Nutri Ninja Blade Assembly attached to an empty cup when not in use.
- 12 Make sure that the Power Pod is unplugged when not in use.



8 0 4 1 0 7 8 8 5