



\* LG LED TV applies LCD screen with LED backlights.

Please read this manual carefully before operating your set and retain it for future reference.

Table with 6 columns of model numbers: 43UP710OZUF, 65UP7560AUD, 43UP7670PUC, 65UP7670PUC, 43UP8000PUA, 65UP8000PUA, 43UP7560AUD, 70UP7070PUE, 43UP7700PUB, 65UP7700PUB, 43UP8000PUR, 65UP8000PUR, 50UP710OZUF, 70UP7170ZUC, 50UP7670PUC, 65UP7700PUB, 50UP8000PUA, 70UP8070PUA, 50UP7560AUD, 70UP7570AUD, 50UP7700PUB, 70UP7670PUB, 50UP8000PUR, 70UP8070PUA, 55UP710OZUF, 75UP7070PUD, 55UP7670PUC, 70UP7770PUB, 55UP8000PUA, 75UP8070PUA, 55UP7560AUD, 75UP7170ZUC, 55UP7700PUB, 75UP7670PUB, 55UP8000PUR, 75UP8070PUR, 65UP710OZUF, 75UP7570AUE, 60UP7670PUB, 75UP7770PUB, 60UP8000PUA, 82UP8770PUA, 60UP8000PUR, 86UP8770PUA

# OWNER'S MANUAL

## Safety and Reference LED TV\*

804106611A

## Important Safety Instruction

- Read these instructions.
Keep these instructions.
Heed all warnings.
Follow all instructions.
Do not use this apparatus near water.
Clean only with dry cloth.
Do not block any ventilation openings.
Do not install near any heat sources such as radiators, heat registers, stoves, or other apparatus (including amplifiers) that produce heat.
Do not defeat the safety purpose of the polarized or grounding-type plug.
Protect the power cord from being walked on or pinched particularly at plugs, convenience receptacles, and the point where they exit from the apparatus.
Only use attachments/accessories specified by the manufacturer.
Use only with the cart, stand, tripod, bracket, or table specified by the manufacturer.
Unplug this apparatus during lightning storms or when unused for long periods of time.
Refer all servicing to qualified service personnel.



By using this product, you agree that all disputes between you and LG arising out of or relating in any way to this product (including but not limited to warranty disputes) shall be resolved exclusively through binding arbitration on an individual basis.

### Title

- 1 Warning! Safety instructions
2 Preparing
3 Starting TV
4 Using Remote Control
5 Connections
6 Troubleshooting
7 Specifications
8 Regulatory

### Before reading this manual

Read this manual thoroughly before operating your TV, and keep it for future reference.
On the website you can download the manual including installation, using, troubleshooting, specifications, license etc and view its contents on your PC or mobile device.
User Guide: For more information about this TV, read the USER GUIDE embedded in the product.
Optional Extras: Optional extras can be changed or modified for quality improvement without any notification.
Note: Product specifications or contents of this manual may be changed without prior notice due to upgrade of product functions.

## 1 Warning! Safety instructions

CAUTION: TO REDUCE THE RISK OF ELECTRIC SHOCK DO NOT REMOVE COVER (OR BACK). NO USER SERVICEABLE PARTS INSIDE. REFER TO QUALIFIED SERVICE PERSONNEL.
The symbol is intended to alert the user to the presence of uninsulated dangerous voltage within the product's enclosure that may be of sufficient magnitude to constitute a risk of electric shock to persons.
WARNING: TO REDUCE THE RISK OF FIRE AND ELECTRIC SHOCK, DO NOT EXPOSE THIS PRODUCT TO RAIN OR MOISTURE.

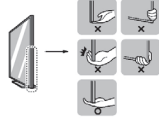
- TO PREVENT THE SPREAD OF FIRE, KEEP CANDLES OR OTHER ITEMS WITH OPEN FLAMES AWAY FROM THIS PRODUCT AT ALL TIMES.
Do not place the TV and/or remote control in the following environments:
- Keep the product away from direct sunlight.
- An area with high humidity such as a bathroom
- Near any heat source such as stoves and other devices that produce heat.
- Near kitchen counters or humidifiers where they can easily be exposed to steam or oil.
- An area exposed to rain or wind.
- Do not expose to dripping or splashing and do not place objects filled with liquids, such as vases, cups, etc. on or over the apparatus (e.g., on shelves above the unit).
- Near flammable objects such as gasoline or candles, or expose the TV to direct air conditioning.
- Do not install in excessively dusty places.
Otherwise, this may result in fire, electric shock, combustion/explosion, malfunction or product deformation.
Ventilation:
- Install your TV where there is proper ventilation. Do not install in a confined space such as a bookcase.
- Do not install the product on a carpet or cushion.
- Do not block or cover the product with cloth or other materials while unit is plugged in.
Take care not to touch the ventilation openings. When watching the TV for a long period, the ventilation openings may become hot.
Protect the power cord from physical or mechanical abuse, such as being twisted, kinked, pinched, closed in a door, or walked upon. Pay particular attention to plugs, wall outlets, and the point where the cord exists the device.
Do not move the TV whilst the Power cord is plugged in.
Do not use a damaged or loosely fitting power cord.
Be sure to grasp the plug when unplugging the power cord. Do not pull on the power cord to unplug the TV.
Disconnecting the Device from the Main Power:
- The power plug is the disconnecting device. In case of an emergency, the power plug must remain readily accessible.
Do not let your children climb or cling onto the TV. Otherwise, the TV may fall over, which may cause serious injury.
Outdoor Antenna Grounding (Can differ by country):
- If an outdoor antenna is installed, follow the precautions below. An outdoor antenna system should not be located in the vicinity of overhead power lines or other electric light or power circuits, or where it can come in contact with such power lines or circuits as death or serious injury can occur. Be sure the antenna system is grounded to provide some protection against voltage surges and built-up static charges.

- Caution: Risk of fire or explosion if the battery is replaced by an incorrect type.
Moving:
- When moving, make sure the product is turned off, unplugged, and all cables have been removed. It may take 2 or more people to carry larger TVs. Do not press or put stress on the front panel of the TV.
Keep the packing anti-moisture material or vinyl packing out of the reach of children.
Do not allow an impact shock. any objects to fall into the product, and do not drop anything onto the screen.
Do not press strongly upon the panel with a hand or a sharp object such as a nail, pencil, or pen, or make a scratch on it. It may cause damage to screen.
Cleaning:
- When cleaning, unplug the power cord and wipe gently with a soft/dry cloth. Do not spray water or other liquids directly on the TV. Do not clean your TV with chemicals including glass cleaner, any type of air freshener, insecticide, lubricants, wax (car, industrial), abrasive, thinner, benzene, alcohol etc., which can damage the product and/or its panel. Otherwise, this may result in electric shock or product damage.

## 2 Preparing

### Lifting and moving the TV

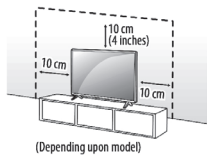
- When moving or lifting the TV, read the following to prevent the TV from being scratched or damaged and for safe transportation regardless of its type and size.
- It is recommended to move the TV in the box or packing material that the TV originally came in.
Before moving or lifting the TV, disconnect the power cord and all cables.
When holding the TV, the screen should face away from you to avoid damage.
Hold the top and bottom of the TV frame firmly. Make sure not to hold the transparent part, speaker, or speaker grille area.
Use at least two people to move a large TV.
When transporting the TV by hand, hold the TV as shown in the following illustration.
When transporting the TV, do not expose the TV to jolts or excessive vibration.
When transporting the TV, keep the TV upright; never turn the TV on its side or tilt towards the left or right.
When handling the TV, be careful not to damage the protruding buttons.



- Avoid touching the screen at all times, as this may result in damage to the screen.
Do not place the product on the floor with its front facing down without padding. Failure to do so may result in damage to the screen.
When attaching the stand to the TV set, place the screen facing down on a cushioned table or flat surface to protect the screen from scratches.

### Mounting on the Table

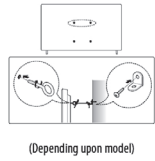
- 1 Lift and tilt the TV into its upright position on a table.
Leave a minimum of 10 cm (4 inches) space from the wall for proper ventilation.
2 Connect the power cord to a wall outlet.



- Do not apply foreign substances (oils, lubricants, etc.) to the screw parts when assembling the product.
Do not use any unapproved items to ensure the safety and product life span.
Any damage or injuries caused by using unapproved items are not covered by the warranty.
Make sure that the screws are fastened tightly.
Do not fasten the screws with excessive force otherwise they may strip and become loose.

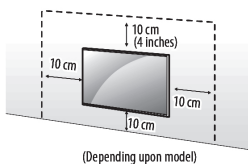
### Securing TV to the Wall

- 1 Insert and tighten the eye-bolts, or TV brackets and bolts on the back of the TV.
If there are bolts inserted at the eye-bolts position, remove the bolts first.
Mount the wall brackets with the bolts to the wall. Match the location of the wall bracket and the eye-bolts on the rear of the TV.
Connect the eye-bolts and wall brackets tightly with a sturdy rope. Make sure to keep the rope horizontal with the flat surface.
Use a platform or cabinet that is strong and large enough to support the TV securely.
Brackets, bolts and ropes are not provided. You can obtain additional accessories from your local dealer.

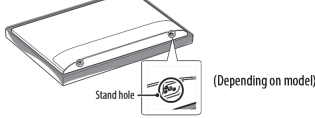


### Mounting to the Wall

An optional wall mount can be used with your LG Television. Consult with your local dealer for a wall mount that supports the VESA standard used by your TV model. Carefully attach the wall mount bracket at the rear of the TV. Install the wall mount bracket on a solid wall perpendicular to the floor. If you are attaching the TV to other building materials, please contact qualified personnel to install the wall mount. Detailed instructions will be included with the wall mount. We recommend that you use an LG brand wall mount. The LG wall mount is easy to adjust or to connect the cables. When you do not use LG's wall mount bracket, use a wall mount bracket where the device is adequately secured to the wall with enough space to allow connectivity to external devices. If you are using a non-adjustable mount, attach the mount to the wall. Attach the cables to the TV first, then attach the TV to the mount.



- Remove the stand before installing the TV on a wall mount by performing the stand attachment in reverse.
For more information of screws and wall mount bracket, refer to the Separate purchase.
If you intend to mount the product to a wall, attach VESA standard mounting interface (optional parts) to the back of the product. When you install the set to use the wall mounting bracket (optional parts), fix it carefully so as not to drop.
When mounting a TV on the wall, make sure not to install the TV by hanging the power and signal cables on the back of the TV.
Do not install this product on a wall if it could be exposed to oil or oil mist. This may damage the product and cause it to fall.
When installing the wall mounting bracket, it is recommended to cover the stand hole using tape, in order to prevent the influx of dust and insects. (Depending upon model).



### Wall Mounting Bracket

(Depending upon model)
Make sure to use screws and wall mount bracket that meet the VESA standard. Standard dimensions for the wall mount kits are described in the following table.

Table with 2 columns: Model and Dimensions. Models include 43/50UP76\*, 43/50UP77\*, 43/50UP80\*, 55/60/65UP76\*, 55/60/65UP77\*, 55/60/65UP80\*, 60/65UP76\*, 60/65UP77\*, 60/65UP80\*, 70/75UP76\*, 70/75UP77\*, 70/75UP80\*, 82/86UP87\*

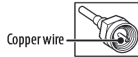
Table with 2 columns: Model and Dimensions. Models include 43/50UP71\*, 43/50UP75\*, 43/50UP76\*, 43/50UP77\*, 43/50UP80\*, 55UP71\*, 55UP75\*, 55UP76\*, 55UP77\*, 55UP80\*, 65UP71\*, 65UP75\*, 60/65UP76\*, 60/65UP77\*, 60/65UP80\*, 70/75UP76\*, 70/75UP77\*, 70/75UP80\*, 400 x 400, 300 x 300, 300 x 300, 400 x 400, 600 x 400, M6, M6, M6, M6, M8, 4, 4, 4, 4, 4, LSW240B, MSW240, OLV480B, MSW240, OLV480B, LSW440B, LSW640B

- Batteries: Store the accessories (battery, etc.) in a safe location out of the reach of children. Do not short circuit, disassemble, or allow the batteries to overheat. Do not dispose of batteries in a fire. Batteries should not be exposed to excessive heat.

## Antenna/Cable

Connect an antenna, cable, or cable box to watch TV while referring to the following. The illustrations may differ from the actual items and an RF cable is optional.

- Make sure not to bend the copper wire of the RF cable.
Complete all connections between devices, and then connect the power cord to the power outlet to prevent damage to your TV.
Use a signal splitter to use 2 TVs or more.
DTV Audio Supported Codec: MPEG, Dolby Digital
This TV cannot receive Ultra HD (3840 x 2160 pixels) broadcasts directly because the related standards have not been confirmed.



## 3 Starting TV

### Turning on the TV

You can simply operate the TV functions, using the button.



### Using button

- Power On (Press)
Power Off\* (Press and Hold)
Menu Control (Press\*)
Menu Selection (Press and Hold\*)
1) All running apps will close.
2) You can access and adjust the menu by pressing the button when TV is on.
3) You can use the function when you access menu control.

- Note: When the TV is turned on for the first time after being shipped from the factory, initialization of the TV may take approximately one minute.

### Adjusting the menu

When the TV is turned on, press the Home button one time. You can adjust the Menu items using the button.

- Turns the power off.
Changes the input source.
Adjusts the volume level.
Scrolls through the saved channels.

- Note: Your TV's OSD (On Screen Display) may differ slightly from that shown in this manual.
The available menus and options may differ from the input source or product model that you are using.
New features may be added to this TV in the future.
The device must be easily accessed to a location outlet near the access. Some devices are not made by turning on / off button, turning off the device and unplugging the power cord.

### Inserting the battery (bateries not supplied)

(Depending on model)

- When the message [Magic Remote battery is low. Please change the battery.] is displayed, replace the batteries. To install batteries, open the battery cover, replace batteries (1.5 V AA) matching the + and - ends to the label inside the compartment, and close the battery cover. Be sure to point the magic remote toward the remote control sensor on the TV. To remove the batteries, perform the installation actions in reverse. This remote uses infrared light. When in use, it should be pointed in the direction of the TV's remote sensor.
To install batteries, open the battery cover, replace batteries (1.5 V AAA) matching the + and - ends to the label inside the compartment, and close the battery cover. To remove the batteries, perform the installation actions in reverse. This remote uses infrared light. When in use, it should be pointed in the direction of the TV's remote sensor.



- Do not mix new batteries with old batteries. This may cause the batteries to overheat and leak.
Failure to match the correct polarities of the battery may cause the battery to burst or leak, resulting in fire, personal injury, or ambient pollution.
This apparatus uses batteries. In your community there might be regulations that require you to dispose of these batteries properly due to environmental considerations. Please contact your local authorities for disposal or recycling information.
Batteries inside or inside the product shall not be exposed to excessive heat such as sunshine, fire or the like.

## Registering Magic Remote Control

### How to register the Magic Remote Control

- To use the Magic Remote, first pair it with your TV.
Put batteries into the Magic Remote and turn the TV on.
Point the Magic Remote at your TV and press the Wheel (OK) on the remote control.
If the TV fails to register the Magic Remote, try again after turning the TV off and back on.

### How to deregister the Magic Remote Control

- Press the Back and Home buttons at the same time, for five seconds, to unpair the Magic Remote with your TV.
Press and hold the Home and Q.Settings buttons for more than 5 seconds to disconnect and re-register the Magic Remote at the same time.
It is recommended that an Access Point (AP) be located more than 0.2 m (0.65 ft) away from the TV. If the AP is installed closer than 0.2 m (0.65 ft), the Magic remote control may not perform as expected due to frequency interference.

## 4 Using Remote Control

### Using Magic Remote Control

(Depending upon model)
The descriptions in this manual are based on the buttons on the remote control. Please read this manual carefully and use the TV correctly.

Diagram of the Magic Remote Control with button descriptions:
Power: Turns the TV on or off.
Dash: Inserts a dash between numbers such as 2-1 and 2-2.
GUIDE: Accesses the [Guide].
Quick Access: Accesses the [Edit Quick Access].
Channel buttons: Scrolls through the saved channels.
Home: Accesses the Home menu.
Home: Launches the last used apps.
Input: Changes the input source.
Input: Accesses the [Home Dashboard].
Wheel (OK): Press the center of the Wheel (OK) button to select a menu. You can change channels by using the Wheel (OK) button.
Wheel (OK): Accesses the [Magic Explorer]. You can run the [Magic Explorer] feature when the pointer color is changed to purple. If watching a program, press and hold down the pointer onto the video. When using [TV Guide], [Settings], [Sports Alert], or [Art Gallery], press and hold down on the text.
Number buttons: Enters numbers.
More actions: Displays more remote control functions.
SAP: (Secondary Audio Program) feature can also be enabled by pressing the Mute button.
Mute: Mutes all sounds.
Voice recognition: Network connection is required to use the voice recognition function.
Q. Settings: Displays the [All Settings] menu.
Back: Returns to the previous level.
Back: Clears on-screen displays and returns to last input viewing.
Streaming Service buttons: Connects to the Video Streaming Service.

- Note: \*\* To use the button, press and hold for more than 1 second.

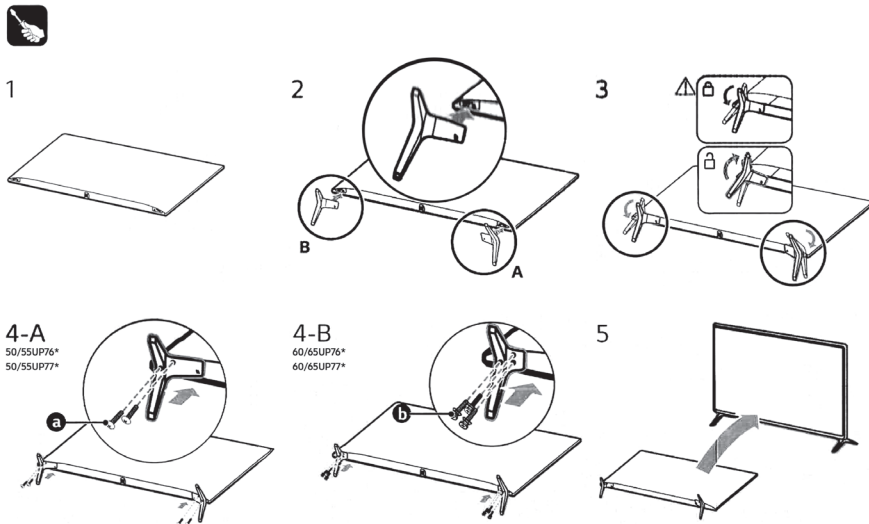
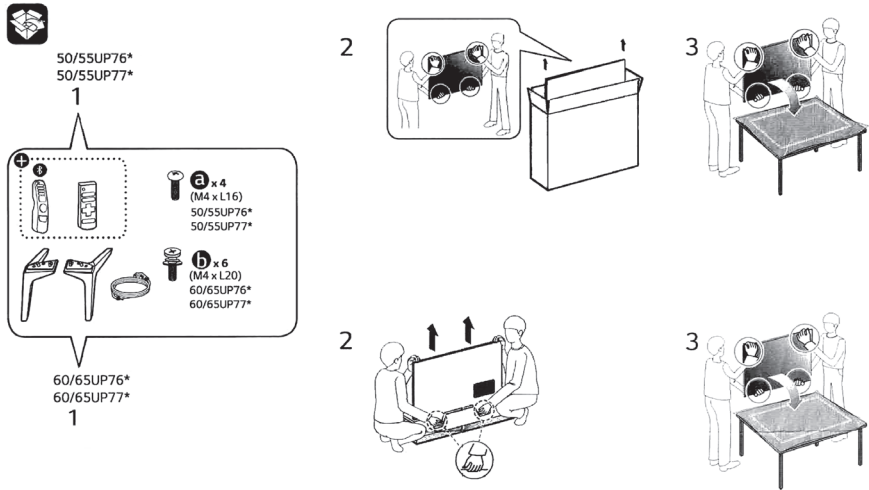




804006647

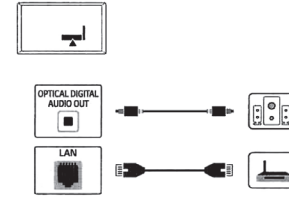
50UP7670PUC 55UP7700PUB 65UP7670PUC  
 50UP7700PUB 60UP7670PUB 65UP7700PUA  
 55UP7670PUC 60UP7700PUB 65UP7700PUB

Please read this manual carefully before operating your unit and retain for future reference.

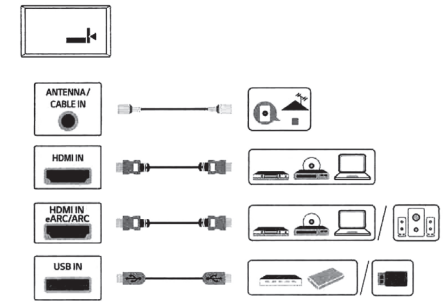


Note: The image shown here is for illustrative purposes only and may be subject to change. The actual number of ports and their locations may vary depending on the model.

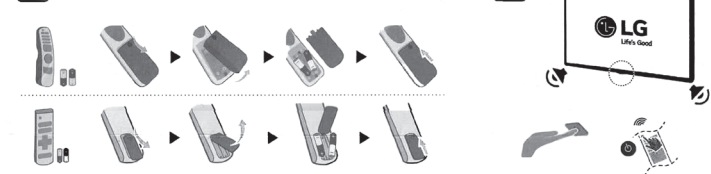
Easy TV Connect Guide (Animation)



The cables mentioned in this guide is not supplied with your unit.



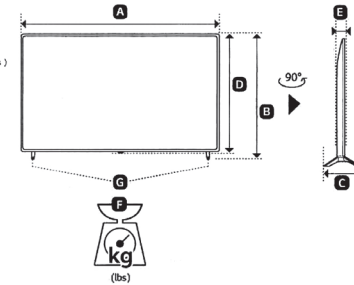
(Batteries not supplied)



The remote control vary depend of model: The buttons on the remote control may have a different name or location than the remote control shows in this manual.



A B C D E : mm (Inches)  
 F G : kg (lbs)



Read Safety and Reference. Easy Setup Guide. Please read this manual carefully before operating your set and retain it for future reference.

+ : Depending upon model

MODELS	A	B	C	D	E	F	F G	Power consumption					
50UP7670PUC	1,121 (44.1)	1,121 (44.1)	708 (27.8)	708 (27.8)	235 (9.2)	235 (9.2)	651 (25.6)	57.1 (2.2)	11.8 (26.0)	11.8 (26.0)	11.7 (25.7)	11.7 (25.7)	130 W
50UP7700PUB	1,121 (44.1)	1,121 (44.1)	713 (28.0)	713 (28.0)	231 (9.0)	231 (9.0)	651 (25.6)	57.1 (2.2)	11.9 (26.2)	11.9 (26.2)	11.7 (25.7)	11.7 (25.7)	
55UP7670PUC	1,235 (48.6)	1,235 (48.6)	772 (30.3)	772 (30.3)	235 (9.2)	235 (9.2)	715 (28.1)	57.5 (2.2)	14.1 (31.0)	14.1 (31.0)	14.0 (30.8)	14.0 (30.8)	135 W
55UP7700PUB	1,235 (48.6)	1,235 (48.6)	776 (30.5)	776 (30.5)	231 (9.0)	231 (9.0)	715 (28.1)	57.5 (2.2)	14.2 (31.3)	14.2 (31.3)	14.0 (30.8)	14.0 (30.8)	
60UP7670PUB	1,356 (53.3)	1,356 (53.3)	852 (33.5)	852 (33.5)	269 (10.5)	269 (10.5)	783 (30.8)	57.5 (2.2)	17.4 (38.3)	17.4 (38.3)	17.1 (37.6)	17.1 (37.6)	150 W
60UP7700PUB	1,454 (57.2)	1,454 (57.2)	900 (35.4)	900 (35.4)	255 (10.0)	255 (10.0)	838 (32.9)	57.7 (2.2)	21.7 (47.8)	21.7 (47.8)	21.5 (47.3)	21.5 (47.3)	
65UP7670PUC	1,454 (57.2)	1,454 (57.2)	906 (35.6)	906 (35.6)	269 (10.5)	269 (10.5)	838 (32.9)	57.7 (2.2)	21.8 (48.0)	21.8 (48.0)	21.5 (47.3)	21.5 (47.3)	185 W
65UP7700PUA	1,454 (57.2)	1,454 (57.2)	906 (35.6)	906 (35.6)	269 (10.5)	269 (10.5)	838 (32.9)	57.7 (2.2)	21.8 (48.0)	21.8 (48.0)	21.5 (47.3)	21.5 (47.3)	
Power requirement:								AC 120V - 50 / 60Hz					

804006647



PRINTED IN MEXICO / SC:08-11-2021 / 1P / Elbrd:J.E.  
 OBPn: \*MFL717564782106 REV01\* / SHNMDL: 50UP7670PUC