

**REFURBISHED PRODUCT LIMITED NINETY
DAYS WARRANTY**

The **Refurbished Product Service Center** WARRANTY to the ORIGINAL purchaser of a product which we have refurbished.

This product that has been refurbished is warranted against any electronic or mechanical defects for a period of NINETY DAYS from the date of the original purchase by the consumer. Since this unit was sold as a refurbished item, the warranty does not apply to any cosmetic appearance items such as scratches. Should a defect occur, the **Refurbished Product Service Center** will repair or, at its option, replace defective unit/parts with new or rebuilt materials without charge for either parts or labor. Replacement unit/parts will be warranted for the remaining portion of the original warranty period.

This warranty does not cover installation or damage from accident, misuse, abuse, improper wiring, incorrect voltage, operating the unit against the instructions in the owner's manual or any product which has been opened, altered, or tampered with.

This warranty does not cover costs for removal and or installation of the unit for repair. Under no circumstances shall the service center be liable for any special, incidental or consequential damages or for any other expenses incurred by reason of use or sale of this product. This warranty is in lieu of any other warranties

particular use or otherwise.

may also have other rights which vary from State to State. Some States do not follow the exclusion or limitation of incidental or consequential damages, hence the above exclusion and limitations may not apply.

WARRANTY REPAIR INFORMATION

If you need service on your unit and this product requires repair during the 90 days warranty period; please go to **www.ConsumerServiceRefurbish.com** or call the **Refurbished Product Service Center** at 562-946-3531 to obtain the required return authorization (RA) number. Pack the unit properly (the original carton is ideal for this purpose) along with a copy of your purchase receipt and a letter describing the problem. Send the unit freight prepaid and insured to:

Your unit will be promptly repaired and returned to you. We will refuse to accept delivery of the returned unit unless the assigned RA number appears on the outside of the shipping carton.

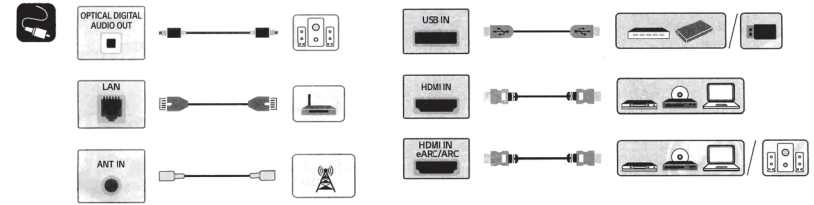
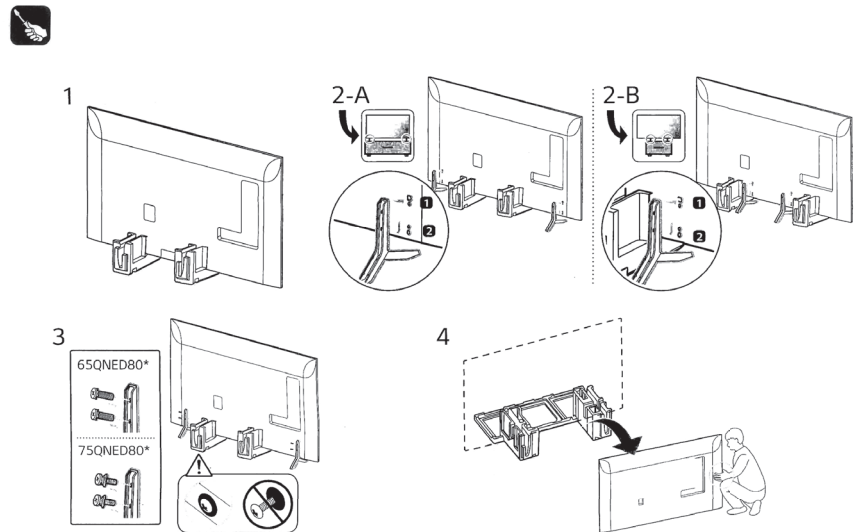
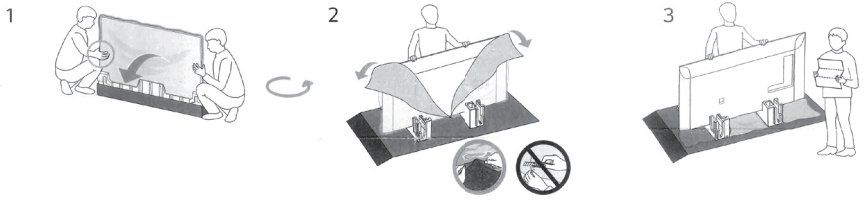
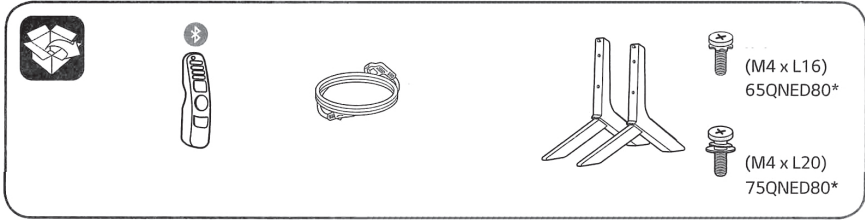
Owner's Information
(Keep for your permanent records)

NAME:
ADDRESS:
CITY:
STATE:
ZIP CODE:
PHONE:
E-MAIL:
MODEL:
SERIAL NO.:



65QNED80ARA 75QNED80ARA
 65QNED80URA 75QNED80URA
 65QNED80SRA 75QNED80SRA

814000104B

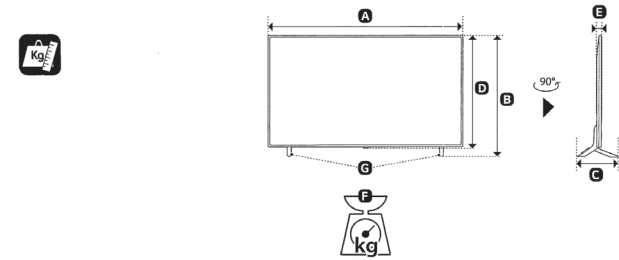


• The cables mentioned in this guide is not supplied with your unit.

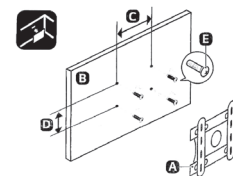
(Batteries not included)



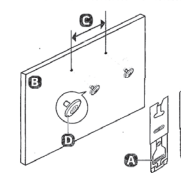
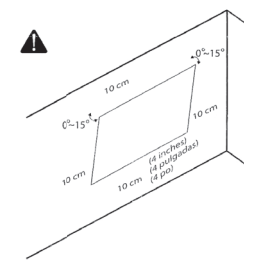
• The remote control vary depend of model: The buttons on the remote control may have a different name or location than the remote control shows in this manual.



MODELS	mm (inches)							Power consumption
	A	B	C	D	E	F	F-G	
65QNED80ARA 65QNED80URA 65QNED80SRA	1 456 mm (57.3) inches	904 mm (35.5) inches	295 mm (11.6) inches	840 mm (33) inches	29.7 mm (1.1) inches	22.9 kg (50.4) lbs	22.5 kg (49.6) lbs	200 W
75QNED80ARA 75QNED80URA 75QNED80SRA	1 677 mm (66) inches	1 032 mm (40.6) inches	359 mm (14.1) inches	965 mm (37.9) inches	30.9 mm (1.2) inches	34.0 kg (74.9) lbs	33.0 kg (72.7) lbs	240 W



mm (inches)				
A	B	C x D	E	
OLW480B	65QNED80*	300 x 300 mm (11.8 x 11.8) inches	M6	
OLW480B	75QNED80*	400 x 300 mm (15.7 x 11.8) inches	M6	



mm (inches)			
A	B	C	D
WB21LMB	65QNED80*	300 mm (11.8) inches	M6

• Accessory type and quantity may vary depending on the model.
 • The image shown here is for illustrative purposes only and may be subject to change.