



# HOT & ICED COFFEE MAKER

Recipe book is not included

## IMPORTANT SAFEGUARDS

READ ALL INSTRUCTIONS BEFORE USE • HOUSEHOLD USE ONLY

Read all instructions before using your NINJA® HOT & ICED COFFEE MAKER. When using electrical appliances, basic safety precautions should always be followed, including the following:

### WARNING

To reduce the risk of fire, electric shock, serious injury, death, or damage when using this appliance, follow these basic safety precautions.

#### General Precautions

1 This appliance can be used by children aged from 8 years and above and persons with reduced physical, sensory or mental capabilities or lack of experience and knowledge if they have been given supervision or instruction concerning use of the appliance in a safe way and understand the hazards involved.

2 To reduce the risk of electric shock, this appliance has a polarized plug (one blade is wider than the other). As a safety feature, this plug will fit into a polarized outlet only one way. If the plug does not fit fully into the outlet, reverse the plug. If it still does not fit, contact a qualified electrician. DO NOT force into outlet or try to modify to fit.

3 Keep the appliance and its cord out of reach of children less than 8 years.

4 To eliminate a choking hazard for young children, remove and discard the protective cover fitted on the power plug of this appliance.

5 Children shall not play with the appliance.

6 To protect against fire, electric shock, and injury to persons, DO NOT immerse cord, plugs, or body of machine in water or other liquid.

7 NEVER carry the appliance by the power cord or pull it to disconnect from electrical socket; instead grasp the plug and pull to disconnect.

8 DO NOT operate any appliance with a damaged cord or plug, or after the appliance malfunctions, or has been dropped or damaged in any manner. Contact a service center.

9 For household and work top use only. DO NOT let the power cord hang over the edge, or touch hot surfaces such as the stove.

10 NEVER use socket below counter.

11 To avoid risk of fire, electrical shock, or damage to the unit, DO NOT store or use unit in an appliance garage or under a wall cabinet.

12 Unplug from outlet when not in use and before cleaning.

13 Turn off and allow to cool before putting on or taking off parts, and before cleaning the appliance.

14 The use of an accessory not recommended by the manufacturer may create an overflow condition and scalding hazard, or result in fire, electric shock, or personal injury.

15 ALWAYS use appliance on a clean, dry, level surface.

16 DO NOT place on or near a hot gas or electric burner or in a heated oven.

17 DO NOT use this appliance for anything other than its intended use.

18 DO NOT use outdoors.

19 DO NOT touch hot surfaces. Use handles or knobs.

20 ALWAYS place a vessel beneath the brew basket to receive the brewed coffee.

21 Scalding may occur if brew basket is opened during a brew or clean cycle.

22 DO NOT remove the vessel while the appliance is running without the Drip Stop in the closed position. Return the vessel quickly and open the Drip Stop to continue the brew.

23 DO NOT fill water reservoir with anything other than water, as other liquids may damage your brewer.

24 DO NOT overfill the water reservoir. Fill water only to the Max Fill line.

25 DO NOT run the appliance without water.

26 Exceeding maximum brew basket capacity may cause overflow. DO NOT use fine or espresso ground coffee.

#### Glass Carafe

27 The carafe is designed for use with this appliance only. DO NOT place carafe on or near a hot gas or electrical burner, or in a heated oven.

28 DO NOT set a hot carafe on a wet or cold surface.

29 DO NOT use a cracked or scratched carafe or a carafe that has a loose or weakened handle.

30 DO NOT clean carafe with abrasive cleaners, steel wool pads, or other abrasive materials.

31 DO NOT place carafe in microwave.

32 DO NOT expose carafe to extreme temperature changes.

33 DO NOT drink directly from the carafe. Liquid from the carafe may be very hot.

34 DO NOT use the carafe to store food when not in use.

35 Ensure the carafe is completely empty before starting a cleaning or brewing cycle. Starting a cycle with water, coffee, or tea in the carafe will cause an overflow.

#### Care & Maintenance

36 Allow the appliance to cool before removing any parts and before cleaning.

37 To prevent illness from bacterial growth in the appliance, follow all cleaning instructions in the Care & Maintenance section of this Owner's Guide.

38 Clean the system on a weekly basis.

39 If the product is not operating properly, contact a service center.

40 Cleaning and user maintenance shall not be made by children unless they are older than 8 and supervised.

#### Cord Statement

41 A short power-supply cord is provided to reduce the risks resulting from becoming entangled in or tripping over a longer cord.

42 DO NOT use extension cords with this product.

**WARNING:** Risk of fire or electric shock. Do not remove bottom cover.

Indicates to read and review instructions to understand operation and use of product.

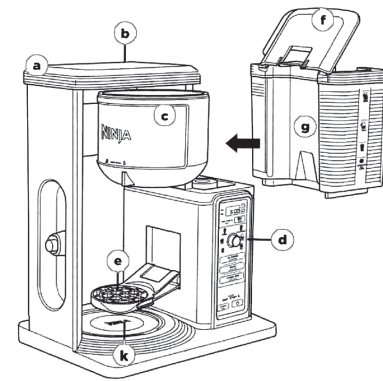
Indicates the presence of a hazard that can cause personal injury, death, or substantial property damage if the warning included with this symbol is ignored.

Indicates risk of fire or electric shock, presence of live parts, or dangerous voltage.

Take care to avoid contact with hot surface. Always use hand protection to avoid burns.

For indoor and household use only.

## PARTS



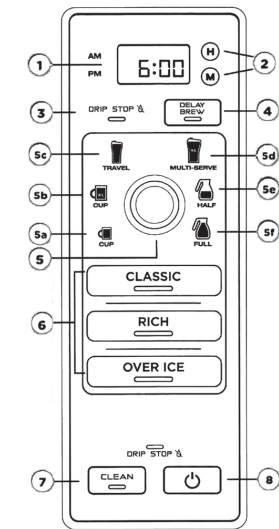
- a Coffee Maker (power cord & storage not shown)
- b Showerhead
- c Swinging Brew Basket
- d Control Panel
- e Single-Serve Cup Platform
- f Flip-Top Water Reservoir Lid
- g Removable Water Reservoir
- h Removable Filter Holder
- i Ninja® Carafe
- j Brew-Through Lid
- k Intelligent Warming Plate

NOTE: Accessories may vary depending on the model.



The images may vary

## CONTROL PANEL



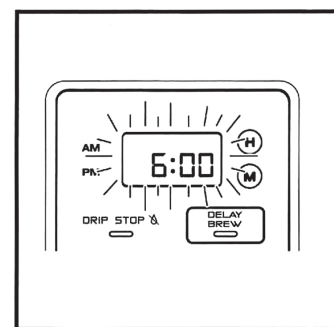
- 1 Programmable Digital Clock
- 2 Hour & Minute Buttons
- 3 Stay Warm Indicator/Button
- 4 Delay Brew Button
- 5 Multi-Serve Dial
  - a Cup
  - b XL Cup
  - c Travel Mug
  - d XL Multi-Serve
  - e Half Carafe
  - f Full Carafe
- 6 Custom Brews
  - Classic Brew
  - Rich Brew
  - Over Ice Brew
- 7 Intelligent Clean Cycle Indicator/Button
- 8 Power Button

## PREPARING YOUR NINJA® HOT & ICED COFFEE MAKER FOR USE

Remove all packaging material. Wash the water reservoir, carafe, and removable filter holder in warm, soapy water with a soft cloth. Rinse parts and dry thoroughly. Before first use, prime the system by running two Full Carafe, Classic brew cycles with water only. After each cycle is complete, discard the water. For detailed instructions, refer to the Priming Your Ninja Hot & Iced Coffee Maker section.

PLEASE KEEP THIS IMPORTANT SAFEGUARD IN MIND WHEN USING THE APPLIANCE: DO NOT run the appliance without water.

## SETTING THE CLOCK



- 1 When the unit is plugged in, the clock will flash on the control panel to indicate that the time has not been set.
- 2 Press the hour (H) or minute (M) button until you reach the current time. The AM or PM indicator will illuminate on the left side of the display as you are setting the time.
- 3 After 5 seconds, the clock will stop flashing and the clock will be set.

NOTE: If the clock stops flashing and does not display the correct time of day, pressing the hour (H) or minute (M) button at any time will cause the clock to flash again. You can now reprogram the correct time by following the previous steps.

NOTE: If you unplug the coffee maker or in the event of an extended power loss, you will need to reset the clock the next time the coffee maker is plugged in.

## HIGH-ALTITUDE CALIBRATION BREW

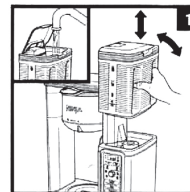
(OPTIONAL, BUT RECOMMENDED FOR USERS IN HIGH-ALTITUDE AREAS)

Because water boils at lower temperatures at higher altitudes, running a calibration cycle before your first brew allows the unit to detect the boiling point of water at your location. Running a calibration cycle will help deliver a consistent brew each time.

- 1 Fill the water reservoir up to, but not exceeding, the Max Fill line.
- 2 Place the empty filter holder into the brew basket, and an empty vessel in the machine.
- 3 Press and hold both CLASSIC and OVER ICE until clock displays CAL.
- 4 A calibration cycle will begin. When complete, the unit will beep and End will appear on the clock display. Discard the water in the vessel.

NOTE: Pressing the CLASSIC, OVER ICE, or Power button will cancel the calibration cycle.

NOTE: We recommend fresh, cool, filtered water. Well water is not recommended.



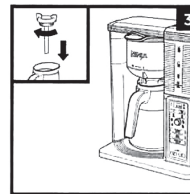
1 Lift the Water Reservoir to the right and up off the coffee maker. Flip the Reservoir Lid open or remove the entire lid. Add water up to, but not exceeding, the Max Fill line. Return the water reservoir to the coffee maker.

DO NOT fill water reservoir with anything other than water, as other liquids may damage your coffee maker.

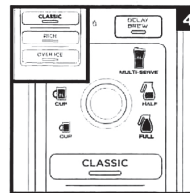


2 Insert the Filter Holder into the Swinging Brew Basket. Close the brew basket until you hear a slight click.

NOTE: DO NOT place any ground coffee in the brew basket for the first 2 cycles.



3 Twist the Brew-Through Lid clockwise onto the Carafe to lock into place and center the carafe below the brew basket.



With everything securely in place and the unit powered on, select the Full Carafe size and press CLASSIC.

When the cycle is complete, discard the water in the carafe. Then repeat the cycle a second time from the beginning.

You are now ready to use your Ninja Hot & Iced Coffee Maker.

## BREW VOLUMES & MEASUREMENTS

### HOW MUCH DO YOU GET IN YOUR CUP?

Each size and brew style produces a different amount of coffee to optimize strength and taste.

### APPROXIMATE BREW VOLUMES

Size	Classic	Rich	Over Ice	
			coffee	filled with ice
Cup	9.5 oz.	8.7 oz.	3.8 oz.	9.5 oz.
XL Cup	11.5 oz.	10.3 oz.	4.7 oz.	11.5 oz.
Travel Mug	14 oz.	13.2 oz.	5.8 oz.	14 oz.
XL Multi-Serve	18 oz.	16 oz.	7.3 oz.	18 oz.

NOTE: The coffee grounds will absorb some of the water that is brewed, resulting in slightly less brewed coffee than water used.

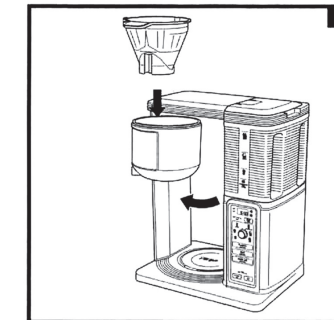
## MEASURING YOUR COFFEE GROUNDS

For best results, use the measurements in the chart to the right to determine how much ground coffee to use for each brew size. The amount of ground coffee for each size will remain the same for any brew type you select. For example, if you select Cup and CLASSIC, you will use the same amount of coffee grounds as if you select Cup and OVER ICE.

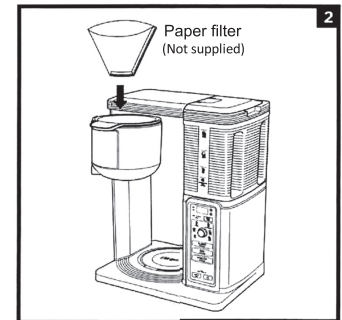
Serving Size	Tablespoons
Cup/XL Cup	2-3 Tbsp.
Travel Mug/ XL Multi-Serve	3-5 Tbsp.
Half Carafe	6-8 Tbsp.
Full Carafe	8-12 Tbsp.

NOTE: Measurements are based on level scoops—adjust to your preferred taste. Use a medium-sized grind if grinding whole beans. Exceeding the recommended medium grind size for whole beans may cause the brew basket to overflow.

## USING THE BREW BASKET

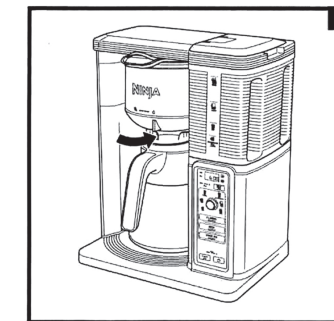


Open the brew basket by swinging it out of the coffee maker. Insert the Filter Holder in the brew basket.



Place a paper cone filter (Not supplied) in the filter holder.

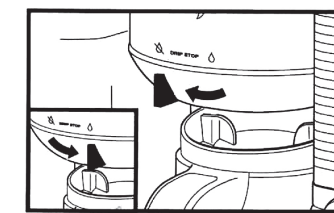
NOTE: If using a paper filter, fold the paper filter along the seams, open it fully, and firmly press it into the filter holder, making sure it is fully seated.



Slide the brew basket back into the coffee maker until it clicks into place.

## USING THE DRIP STOP

### CAN'T WAIT FOR THE FIRST CUP?

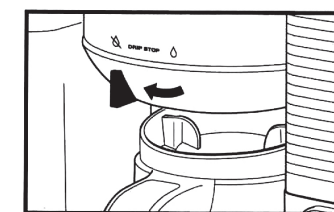


When brewing a carafe, close the Drip Stop to pause the brew cycle and pour a cup. Promptly replace the carafe and open the Drip Stop to complete the brew.

If you forget to open the Drip Stop, the coffee maker will pause the brew, and after 20 seconds it will give you a friendly audible reminder. After 6 minutes, the brew will be canceled.

NOTE: If the Drip Stop is closed before you begin a brew, the coffee maker will notify you with 5 beeps and the Drip Stop indicator will illuminate. Set the Drip Stop to the open position and select your brew type.

### CLOSING THE DRIP STOP AFTER A BREW



When the brew cycle is complete, set the Drip Stop to the closed position to stop dripping from the brew basket. While the Drip Stop is closed, the Drip Stop indicator will illuminate.

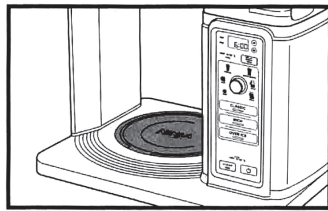
NOTE: Remember to open the Drip Stop when you are ready to brew again. If you forget, your coffee maker will give you a friendly audible reminder.

READ AND SAVE THESE INSTRUCTIONS



## INTELLIGENT WARMING PLATE & STAY WARM BUTTON

### INTELLIGENT WARMING PLATE

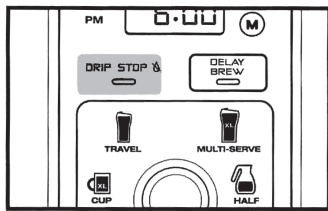


The **Intelligent Warming Plate** will automatically turn on during a Half or Full Carafe size of Classic or Rich brew. The Intelligent Warming Plate will adjust the heat it produces to avoid burning the coffee over time.

This feature is not available on all models.

**IMPORTANT:** The **HOT SURFACE** indicator will illuminate when the warming plate is hot.

### STAY WARM BUTTON



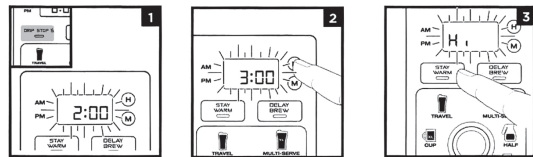
Press **STAY WARM** after the brew to turn the Intelligent Warming Plate off. You can turn the Intelligent Warming Plate back on by pressing **STAY WARM** again.

**IMPORTANT:** The **HOT SURFACE** indicator will remain illuminated until the warming plate has cooled to a safe temperature.

## TIME & TEMPERATURE ADJUSTMENT

You can adjust how long the **Intelligent Warming Plate** remains on (up to 4 hours) and/or set the temperature to High or Low. By default, the Intelligent Warming Plate is set to remain on for 2 hours, and is set to High to keep your coffee hot. The Low setting keeps your brew at a slightly lower temperature to preserve flavor longer.

To change the time/temperature settings of your warming plate, follow these instructions: This feature is not available on all models.



**1** Press and hold **STAY WARM** until the clock begins to flash the current warming time.

**2** Quickly press the hour (H) and/or minute (M) buttons to increase the time up to 4 hours or decrease the time to 0 hours. Press **STAY WARM** to set the new time. Or wait 5 seconds, and the unit will beep, signifying the new time has been set.

Setting the time to 0 hours will result in the stay warm function not coming on automatically while brewing. To manually turn it on or off, press the **STAY WARM** button.

**3** Next, the clock will display the current warming plate temperature. To keep the same temperature, press **STAY WARM**, or wait 5 seconds for the same temperature to lock in. To change the temperature, press the hour (H) or (M) buttons, then press **STAY WARM**, or wait 5 seconds for the temperature to lock in.

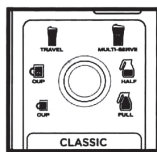
**NOTE:** If you set the warming time to 0 hours, it will skip the warming temperature menu.

## CUSTOM BREWS

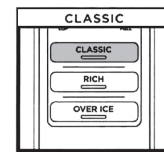
**NOTE:** For single cup, lower the Single-Serve Cup Platform and set your vessel in the center of it. Ensure you are using at least a 12 oz. cup for the Cup size, 14 oz. cup for the XL Cup size, 16 oz. travel mug for the Travel Mug size, and 20 oz. travel mug for the XL Multi-Serve size.

### CLASSIC AND RICH BREWS

**NOTE:** Rich brew will yield slightly less brewed coffee than Classic brew.



Use the **Multi-Serve Dial** to select the brew size. Place the empty vessel you would like to brew into under the brew basket.



Press **CLASSIC** or **RICH** and the brew will begin. Press **CLASSIC** or **RICH** again to cancel the brew.

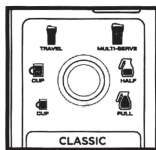
The brew will begin, stop, and be quiet for a short period of time before it begins again. This process is used to evenly saturate the coffee grounds.

The unit will beep to signal a completed brew.

## CUSTOM BREWS (CONT...)

**NOTE:** For single cup, lower the Single-Serve Cup Platform and set your vessel in the center of it. Ensure you are using at least a 12 oz. cup for the Cup size, 14 oz. cup for the XL Cup size, 16 oz. travel mug for the Travel Mug size, and 20 oz. travel mug for the XL Multi-Serve size.

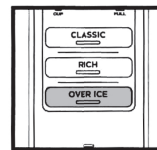
### OVER ICE BREW



Use the **Multi-Serve Dial** to select the brew size. Fill your desired vessel to the top with ice cubes and place the vessel below the brew basket.

**NOTE:** DO NOT use glassware. However, the provided Ninja® glass carafe is safe to use due to its specialized glass material.

**IMPORTANT:** Always fill the desired vessel to the top with ice before placing it below the brew basket. DO NOT add ice to the water reservoir.

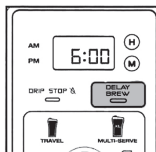


Press **OVER ICE** and the brew will begin. Press **OVER ICE** again to cancel the brew.

The brew will begin, stop, and be quiet for a short period of time before it begins again. This process is used to evenly saturate the coffee grounds.

The unit will beep to signal a completed brew.

### DELAY BREW



**NOTE:** The unit must remain on for the Delay Brew function to work. DO NOT power off after setting Delay Brew.

**IMPORTANT:** Make sure the Drip Stop is in the open position.

- Turn the unit on by pressing the Power button.
- After filling the water reservoir and adding ground coffee to the filter holder, be sure the reservoir and brew basket are securely in place. Place the appropriate-size vessel under brew basket.
- Press **DELAY BREW**. **DELAY BREW** will illuminate and the clock will begin to flash "12:00" or the last Delay Brew time that was set.

**4** Once the proper time has been set, select the size of the vessel that you would like to brew into.

**5** Select the brew style that you desire from the 3 flashing buttons. The selected brew style will remain illuminated.

**6** Once the time, brew size, and brew style have been set, allow **DELAY BREW** to stop flashing, or press **DELAY BREW** to activate. When activated, the unit will beep and **DELAY BREW** and your selected options will remain illuminated. To cancel, press **DELAY BREW** again.

**NOTE:** If you attempt to change your selections while Delay Brew is set, the unit will beep and **DELAY BREW** will flash. To change your selections, cancel **DELAY BREW**.

## CARE & MAINTENANCE

### AFTER EACH BREW

**NOTE:** For best results, we recommend rinsing the reservoir after brewing and refilling with fresh water for the next brew.

- After the unit has cooled, remove the filter holder from the brew basket and discard the paper filter. Thoroughly wash the filter holder with soap and warm water or place on top rack of dishwasher.
- Wash the carafe and brew-through lid with soap and warm water. Use a bottle brush or a cloth to wash the inside of the carafe. DO NOT use a wire brush.

**NOTE:** The glass carafe, brew-through lid, removable filter holder, water reservoir, flip-top lid, and scoop are top-rack dishwasher safe.

- After the coffee maker has cooled, wipe down the main unit, showerhead, and water reservoir shelf with a cloth and warm water. DO NOT immerse the coffee maker in water.

**CLEANING THE WATER RESERVOIR**  
Empty the water reservoir and hand-wash or place in your dishwasher.

**CLEANING THE CARAFE**  
We recommend cleaning your carafe with warm, soapy water.  
If you want to clean the carafe more thoroughly, we recommend using a soft foam brush. DO NOT use a wire brush.

## CLEANING & DESCALING

The **CLEAN** button will illuminate when a cleaning cycle is recommended for your unit, as calcium scale buildup could be affecting the flavor of your coffee.

To clean and descale your Ninja® Hot and Iced Coffee Maker:

**NOTE:** The clean cycle takes approximately 60 minutes. If you cancel the clean cycle, your machine will not be properly descaled.

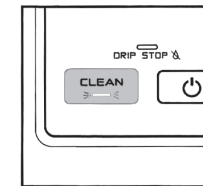
- Select the **Full Carafe** size and set the empty carafe beneath the brew basket.
- Use a descaling solution specifically formulated for coffee maker cleaning and follow the directions on the package. Fill the water reservoir up to, but not exceeding, the Max Fill line (50 oz.).

### OR

Fill the water reservoir to the Travel Mug line (16 oz.) with white vinegar, then fill the rest of the reservoir with water up to, but not exceeding, the Max Fill line.

**IMPORTANT:** Use only white vinegar

- Once the water reservoir is filled, press the **CLEAN** button.



**NOTE:** To cancel the clean cycle, press the Power button or **CLEAN** button once. The unit will beep and stop brewing through the cleaning mixture. Continue to follow the instructions starting at Step 6.

## TROUBLESHOOTING

### THERE'S SEDIMENT IN MY COFFEE.

- If using a permanent filter (sold separately), the sediment at the bottom of the brewed coffee may be due to using finely ground coffee.
- To reduce the amount of sediment in the brewed coffee, use a slightly coarser grind or use a paper filter.

**NOTE:** We DO NOT recommend using a paper filter in conjunction with the permanent filter, as clogging and backing up of water and/or coffee in the filter basket can occur.

### COFFEE IS TOO WEAK.

- For stronger coffee, use the Rich brew setting, try darker roast beans, or use the permanent filter (sold separately) rather than a paper filter. If you want an even bolder flavor, you can add more coffee grinds to the brew basket. Additional grinds do absorb liquid, so you will have a more concentrated, smaller cup of coffee.

### COFFEE IS TOO STRONG.

- For milder coffee, use the Classic brew setting or use lighter roast beans. If you want an even milder flavor, you can put fewer coffee grinds in the brew basket.

### BREW CYCLE IS TOO SLOW.

- Depending on your settings, your brew time will vary from around 4 minutes to 10 minutes.

### CUP OR TRAVEL MUG OVERFLOWED.

- Ensure you are using at least a 12 oz. cup for the Cup size, 14 oz. cup for the XL Cup size, 16 oz. travel mug for the Travel Mug size, and 20 oz. travel mug for the XL Multi-Serve size.

### BREW BASKET OVERFLOWED.

- The bottom of the filter holder may be clogged. This can happen with finely ground coffee or too many coffee grinds in the brew basket. Medium-ground coffee is recommended

### THERE'S WATER LEFT IN THE RESERVOIR.

- The water reservoir markings are minimum fill lines that indicate the amount of water needed for that brew size. However, all brew styles use different amounts of water to create the proper flavor and concentration, leaving some water to remain.

### COFFEE MAKER IS LEAKING.

- After removing the water reservoir, there may be a small amount of water in the reservoir valve. This can be easily removed with a dry cloth.
- If the leak is coming from the brew basket, make sure all parts are assembled correctly and securely, and the drip stop is closed.
- If the leak is coming from the bottom of the coffee maker, call a service center.

### CLEAN LIGHT IS ON.

- Run a clean cycle. If you have recently completed a clean cycle, you may need to run a second cycle to remove additional mineral buildup that occurs naturally over time.

### CLOCK DISPLAY MESSAGES:

- "Add Wtr"** The system does not have enough water in the reservoir to complete your brew. Add fresh water to the reservoir, then press your selected brew style to resume the brew.
- "CLn"** The system has detected that a clean cycle needs to be run immediately to remove calcium scale buildup in the boiler. See 'Cleaning & Descaling' for instructions.

### ERROR MESSAGES

- "Er"** If the clock displays "Er" and then a number (ex. "Er 03") contact a service center.

## REFURBISHED PRODUCT LIMITED NINETY DAYS WARRANTY

The **Refurbished Product Service Center** offers the following WARRANTY to the ORIGINAL purchaser of a product which we have refurbished.

This product that has been refurbished is warranted against any electronic or mechanical defects for a period of NINETY DAYS from the date of the original purchase by the consumer. Since this unit was sold as a refurbished item, the warranty does not apply to any cosmetic appearance items such as scratches. Should a defect occur, the **Refurbished Product Service Center** will repair or, at its option, replace defective unit/parts with new or rebuilt materials without charge for either parts or labor. Replacement unit/parts will be warranted for the remaining portion of the original warranty period.

This warranty does not cover installation or damage from accident, misuse, abuse, improper wiring, incorrect voltage, operating the unit against the instructions in the owner's manual or any product which has been opened, altered, or tampered with.

This warranty does not cover costs for removal and or installation of the unit for repair. Under no circumstances shall the service center be liable for any special, incidental or consequential damages or for any other expenses incurred by reason of use or sale of this product. This warranty is in lieu of any other warranties expressed or implied warranty of merchantability of fitness for particular use or otherwise.

This warranty gives the consumer specific legal rights and they may also have other rights which vary from State to State. Some States do not follow the exclusion or limitation of incidental or consequential damages, hence the above exclusion and limitations may not apply.

*Refurbished Product Service Center*  
13225 Marquardt Avenue Santa Fe Springs, CA 90670.

## WARRANTY REPAIR INFORMATION

If you need service on your unit and this product requires repair during the 90 days warranty period; please go to [www.ConsumerServiceRefurbish.com](http://www.ConsumerServiceRefurbish.com) or call the **Refurbished Product Service Center** at 562-946-3531 to obtain the required return authorization (RA) number. Pack the unit properly (the original carton is ideal for this purpose) along with a copy of your purchase receipt and a letter describing the problem. Send the unit freight prepaid and insured to:

*Refurbished Product Service Center,*  
Attn: Customer Service Department 13225 Marquardt Avenue Santa Fe Springs, CA 90670

Your unit will be promptly repaired and returned to you.

We will refuse to accept delivery of the returned unit unless the assigned RA number appears on the outside of the shipping carton.

**Owner's Information**  
(Keep for your permanent records)

NAME: \_\_\_\_\_

ADDRESS: \_\_\_\_\_

CITY: \_\_\_\_\_ STATE: \_\_\_\_\_ ZIP CODE: \_\_\_\_\_

PHONE: \_\_\_\_\_ E-MAIL: \_\_\_\_\_

MODEL: \_\_\_\_\_ SERIAL NO.: \_\_\_\_\_

### NOTE:

In order to ensure the highest possible standard for refurbished items, all units are thoroughly inspected as part of the process. For this item, water may be used during the refurbishing process and so; you may notice some condensation in the water reservoir. It is recommended to rinse the water reservoir with fresh water prior to its first use.

## TECHNICAL SPECIFICATIONS

Voltage: 120V- 60Hz.

Water Reservoir

Capacity: 50 Ounces

### SharkNinja Operating LLC

Illustrations may differ from actual product. We are constantly striving to improve our products, therefore the specifications contained herein are subject to change without notice.

For SharkNinja U.S. Patent information, visit [sharkninja.com/uspatents](http://sharkninja.com/uspatents).

© 2020 SharkNinja Operating LLC

CM300Series\_IB\_MP\_Mv4\_201210

