

# NINJA<sup>®</sup>

## PROFESSIONAL BLENDER 1000

### Owner's Guide

804106860

Recipe book is not included.



It's important to read this instructions prior to using your new product for the first time.

## IMPORTANT SAFETY INSTRUCTIONS

PLEASE READ CAREFULLY BEFORE USE • FOR HOUSEHOLD USE ONLY

	<b>Read and review instructions for operation and use.</b>
	<b>Indicates the presence of a hazard that can cause personal injury, death or substantial property damage if the warning included with this symbol is ignored.</b>
	<b>For indoor and household use only.</b>
<b>When using electrical appliances, basic safety precautions should always be followed, including the following:</b>	

### WARNING

To reduce the risk of injury, fire, electrical shock or property damage, basic safety precautions must always be followed, including the following numbered warnings and subsequent instructions. Do not use appliance for other than intended use.

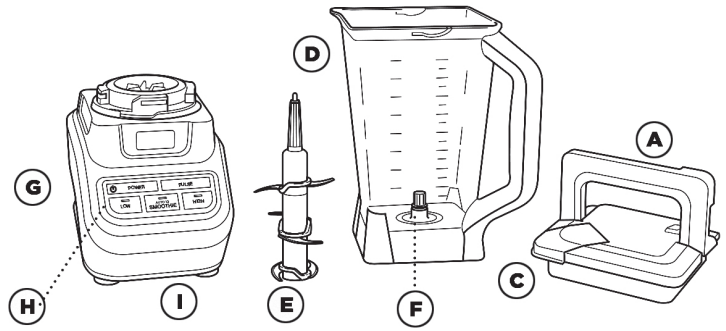
- 1 Read all instructions prior to using the appliance and its accessories.
- 2 Carefully observe and follow all warnings and instructions. This unit contains electrical connections and moving parts that potentially present risk to the user.
- 3 Take your time and exercise care during unpacking and appliance setup. This appliance contains sharp, loose blades that can cause injury if mishandled.
- 4 Upon completion of processing, ensure the blade assembly is removed **BEFORE** emptying container's contents. Remove the blade assembly by carefully grasping the top of the shaft and lifting it from the container. Failure to remove the blade assembly before emptying the container results in a risk of laceration.
- 5 If using the pour spout, hold the cover in place on the container or ensure lid lock is engaged when pouring to avoid risk of injury.
- 6 Take inventory of all contents to ensure you have all parts needed to properly and safely operate your appliance.
- 7 Blades are sharp. Handle carefully.
- 8 The blade assemblies are sharp and are **NOT** locked in place in their containers. The blade assemblies are designed to be removable to facilitate cleaning and replacement if needed. **ONLY** grasp the blade assembly by the top of the shaft. Failure to use care when handling the blade assemblies will result in a risk of laceration.
- 9 **NEVER** place the blade assembly on the motor base without it first being attached to the container with the lid also in place.
- 10 This product is provided with a Stacked Blade Assembly. **ALWAYS** exercise care when handling blade assembly. The blade assembly is sharp and is **NOT** locked in place in its container. The blade assembly is designed to be removable to facilitate cleaning and replacement if needed. **ONLY** grasp the blade assembly by the top of the shaft. Failure to use care when handling the blade assembly will result in a risk of laceration.
- 11 **DO NOT** blend hot liquids. Doing so may result in pressure buildup and steam exposure that can pose a risk of the user being burned.
- 12 Turn the appliance **OFF**, then unplug the appliance from the outlet when not in use, before assembling or disassembling parts, and before cleaning. To unplug, grasp the plug by the body and pull from the outlet. **NEVER** unplug by grasping and pulling the flexible cord.
- 13 Before use, wash all parts that may contact food. Follow washing instructions covered in this instruction manual.
- 14 Before each use, inspect blade assembly for damage. If a blade is bent or damage is suspected, contact SharkNinja to arrange for replacement.
- 15 **DO NOT** use this appliance outdoors. It is designed for indoor household use only.
- 16 This appliance has a polarized plug (one prong is wider than the other). To reduce the risk of electric shock, this plug will fit in a polarized outlet only one way. If the plug does not fit fully in the outlet, reverse the plug. If it still does not fit, contact a qualified electrician. **DO NOT** modify the plug in any way.
- 17 **DO NOT** operate any appliance with a damaged cord or plug, or after the appliance malfunctions or is dropped or damaged in any manner. This appliance has no user-serviceable parts. If damaged, contact a Service Center.
- 18 This appliance has important markings on the plug blade. The entire supply cord is not suitable for replacement. If damaged, please contact a Service Center.
- 19 Extension cords should **NOT** be used with this appliance.
- 20 To protect against the risk of electric shock, **DO NOT** submerge the appliance or allow the power cord to contact any form of liquid.
- 21 **DO NOT** allow the cord to hang over the edges of tables or counters. The cord may become snagged and pull the appliance off the work surface.
- 22 **DO NOT** allow the unit or the cord to contact hot surfaces, including stoves and other heating appliances.
- 23 **ALWAYS** use the appliance on a dry and level surface.
- 24 **DO NOT** allow children to operate this appliance or use as a toy. Close supervision is necessary when any appliance is used near children.
- 25 This appliance is **NOT** intended to be used by people with reduced physical, sensory, or mental capabilities, or lack of experience and knowledge, unless they have been given supervision or instruction concerning use of the appliance by a person responsible for their safety.
- 26 **ONLY** use attachments and accessories that are provided with the product or are recommended by SharkNinja. The use of attachments, including canning jars, not recommended or sold by SharkNinja may cause fire, electric shock, or injury.
- 27 Keep hands, hair, and clothing out of the container when loading and operating.
- 28 During operation and handling of the appliance, avoid contact with moving parts.
- 29 **DO NOT** fill container past the **MAX FILL** or **MAX LIQUID** lines.
- 30 **DO NOT** operate the appliance with an empty container.
- 31 **DO NOT** microwave container or accessories provided with the appliance.
- 32 **NEVER** leave the appliance unattended while in use.
- 33 **DO NOT** process dry ingredients with the Stacked Blade Assembly.
- 34 **DO NOT** perform grinding operations with the Stacked Blade Assembly.
- 35 **NEVER** operate the appliance without lids and caps in place. **DO NOT** attempt to defeat the interlock mechanism. Ensure the container and lid are properly installed before operation.
- 36 Before operation, ensure all utensils are removed from container. Failure to remove utensils can cause container to shatter and potentially result in personal injury and property damage.
- 37 Keep hands and utensils out of container while chopping to reduce the risk of severe personal injury or damage to the blender/food chopper. A scraper may be used **ONLY** when the blender or processor is not running.
- 38 **DO NOT** open pour spout cap while blender is operating.
- 39 If you find unmixed ingredients sticking to the sides of the pitcher, stop the appliance, remove the lid, and use a spatula to dislodge ingredients. **NEVER** insert your hands into the pitcher, as you may contact one of the blades and experience a laceration.
- 40 **DO NOT** attempt to remove the container or lid from the motor base while the blade assembly is still spinning. Allow the appliance to come to a complete stop before removing lids and containers.
- 41 If the appliance overheats, a thermal switch will activate and temporarily disable the motor. To reset, unplug the appliance and allow it to cool for approximately 30 minutes before using again.
- 42 **DO NOT** expose the container and accessories to extreme temperature changes. They may experience damage.
- 43 The maximum wattage rating for this appliance is based on the configuration of the Stacked Blade Assembly and the pitcher.
- 44 **DO NOT** submerge the motor base or control panel in water or other liquids. **DO NOT** spray motor base or control panel with any liquid.
- 45 **DO NOT** attempt to sharpen blades.
- 46 Turn off the appliance and unplug the motor base before cleaning.

## SAVE THESE INSTRUCTIONS

## GETTING STARTED

The Ninja<sup>®</sup> Professional Blender 1000 is a high powered kitchen tool that is perfect for ice crushing, blending, pureeing and controlled processing. Create all of your favorite recipes quickly and easily with just one touch of a button. For best results, be sure to carefully read all the instructions contained in the manual before using this appliance.

- |                                 |  |
|---------------------------------|--|
| A Lid with Locking Handle       | F Gear Shaft   |
| B Locking Handle Release Button | G Motor Base (power cord and cord storage not shown) |
| C Pouring Spout with Cap        | H Control Panel                                      |
| D Pitcher                       | I Non-slip Bottom                                    |
| E Stacked Blade Assembly        |  |



**NOTE:** Accessories may vary depending on the model. Refer to quick guide, if available. The images shown here are for illustrative purposes only and may be subject to change.

## BEFORE FIRST USE

### IMPORTANT

- Review all warnings at the beginning of this Owner's Guide before proceeding.

- 1 Remove all packaging material and labels from the appliance. Separate all parts from each other.
- 2 Wash the lid, pitcher, and Stacked Blade Assembly in warm, soapy water. When washing the blade assembly, use a dishwashing utensil with a handle to avoid direct hand contact with blades.
- 3 Handle blade assembly with care to avoid contact with sharp edges. Rinse and air dry thoroughly.
- 4 The pitcher and Stacked Blade Assembly are dishwasher safe. It is recommended the lid and Stacked Blade Assembly be placed on the top rack. Ensure the Stacked Blade Assembly is removed from the pitcher before placing in the dishwasher.
- 5 Wipe the motor base clean with a damp cloth.

### PLEASE KEEP THESE IMPORTANT SAFEGUARDS IN MIND WHEN USING THE APPLIANCE:

Make sure the motor base is plugged in for use.

**NEVER** add ingredients into the container before placing the Blade Assembly in first.

**DO NOT** attempt to operate the appliance without the lid on.

**NEVER** run the appliance empty.

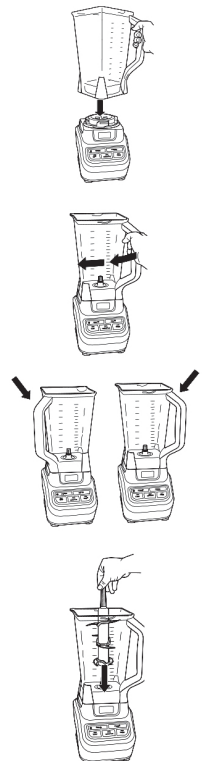
Appliance accessories are not intended to be used in the microwave, as it may result in damage to the accessories.

## ASSEMBLY & USE OF THE PITCHER

### IMPORTANT

- Review all warnings at the beginning of this Owner's Guide before proceeding.

- 1 Place the motor base on a clean, dry, level surface such as a counter or tabletop.
- 2 Align and lower the pitcher onto the motor base.
- 3 Rotate the pitcher clockwise until it locks in place. You will hear a click when the lock is engaged.
- 4 The pitcher can be placed on the motor base two ways; the handle can be on the front right corner or the front left corner.
- 5 Holding the Stacked Blade Assembly by the top of the shaft, place it onto the drive gear inside the pitcher. Ensure the Stacked Blade Assembly is seated properly and is standing upright.



### NOTE

- The Stacked Blade Assembly will fit loosely on the drive gear.

- 6 Add the ingredients to the pitcher, making sure they do not exceed the highest measured marking line on the side of the pitcher.

### NOTES

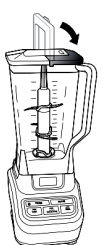
- If you need to add additional ingredients while the appliance is processing, open the pour spout cap and pour the ingredients in through the opening.
- When blending any kind of liquids, such as mixtures of any drinks or smoothies, do not exceed the "Max Liquid" mark (64 ounces) on the pitcher.

- 7 Plug the power cord into the electrical outlet and press the power button (⏻).

### IMPORTANT

As a safety feature, the power button (⏻) will flash and the motor will not work if the pitcher and lid are not installed correctly. When the pitcher and lid are installed properly, the power button (⏻) will be solid, indicating the blender is ready for use.

- 8 Holding the lid by the handle in the upright position, place it on top of the pitcher, aligning the arrow (▼) located on the lid with the arrow (▲) located on the pitcher's handle. Press the handle down until you hear a click.

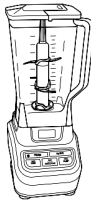


- 9 Select the speed according to your blending requirements\*:
- Use the LOW setting for processing and mixing.
  - Use the SMOOTHIE setting for intelligent preset program to combine unique blending and pausing patterns that do the work for you.
  - Use the HIGH setting for pureeing and liquefying.
  - Use the PULSE button for controlled chopping and processing.
- \*See Blending Chart.

**NOTE**

- Pulse ingredients for even chopping by pressing down in short intervals

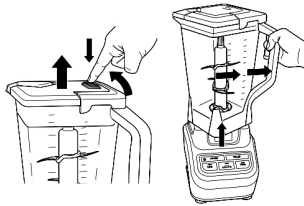
- 10 When ingredients have reached your desired consistency, stop the appliance by pressing the power button (⏻) and wait for the Stacked Blade Assembly to stop turning.



- 11 To remove the lid, press the release button on the lid, pull the lid handle up to a 90° angle, and lift the lid off. Turn the pitcher counterclockwise and then lift off the base.

- 12 Open the pour spout cap and use the spout to empty liquid contents.

For thicker consistencies, first remove the lid by pressing the release button and pulling the lid handle up to a 90° angle to lift off the pitcher. Then, carefully remove the Stacked Blade Assembly by the top of the shaft. Place Stacked Blade Assembly away from the work area to avoid accidental contact. Finally, empty contents from the pitcher.



- 13 Make sure the unit is unplugged when not in use.

## BLENDING CHART

BUTTON	FUNCTION	USE
<b>POWER</b> ⏻	On/Off	Always turn appliance off when not in use.
<b>LOW</b>	Processing & Mixing	Use to mix thin batters, gravies, and marinades; beat eggs; puree cooked foods and uncooked fruits; and chop vegetables for dips and salsa.
<b>AUTO-IQ SMOOTHIE</b>	Smoothie Making	Use to combine your favorite fresh or frozen ingredients, liquids, and powders to create smoothies and protein shakes.
<b>HIGH</b>	Pureeing & Liquefying	Use to mix smoothies, frappes, liquefy thick mixtures and blend whole fruits and vegetables.
<b>PULSE</b>	Controlled Processing & Bursts of Power	Use to control chopping and processing.

\*When blending soups and sauces, make sure they're cooled to room temperature first. Ninja® containers are not intended for hot blending.

## CARE & MAINTENANCE

### CLEANING

- 1 Separate all parts from each other.
- 2 **Hand-Washing:** Wash the pitcher, lid, and Stacked Blade Assembly in warm, soapy water. When washing the Stacked Blade Assembly, use a dishwashing utensil with a handle to avoid direct hand contact with blades. Handle blade assembly with care to avoid contact with sharp edges. Rinse and air-dry thoroughly.  
**Dishwasher:** The pitcher, lid, and Stacked Blade Assembly are all dishwasher safe. The lid and Stacked Blade Assembly are top-rack dishwasher safe. Ensure the Stacked Blade Assembly is removed from the pitcher before placing in the dishwasher.
- 3 Wipe the motor base clean with a damp cloth.

### STORING

- 1 Store the Ninja® Professional 1000 upright with the Stacked Blade Assembly inside the pitcher with the lid secured on top. Do not place anything on top. Loosely wrap the power cord around the cord storage hook in the back of the unit.

## TROUBLESHOOTING GUIDE

**⚠ WARNING: To reduce the risk of shock and unintended operation, turn power off and unplug unit before troubleshooting.**

### Motor doesn't start or Stacked Blade Assembly doesn't rotate.

- Make sure the pitcher is securely placed on motor base.
- Make sure the lid is securely on pitcher in the correct position (align arrows).
- The blender is turned off. Press the power button (⏻) to turn on.
- Check that the plug is securely inserted into the electrical outlet.
- Check the fuse or circuit breaker.
- The unit has overheated. Unplug and wait approximately 15 minutes before using again.

### Ingredients are unevenly chopped.

- Try reducing the amount of ingredients for processing. Also, make sure ingredient pieces are cut in even sizes before processing.

### Ingredients are chopped too fine or is too watery.

- The ingredients have been over-processed. Use PULSE button for controlled processing.

### Ingredients collect on lid or on the sides of the pitcher.

- The mixture is too thick. Add more liquid.

### You cannot achieve snow from solid ice.

- **DO NOT** use ice that has been sitting out or has started to melt. Use ice straight from the freezer and make sure the pitcher is completely dry before adding ice.

### My unit shuts off during use:

- 1 Unplug the unit from the electrical outlet.
- 2 Remove and empty the pitcher and ensure no ingredients are jamming the Stacked Blade Assembly.
- 3 Allow the unit to cool for approximately 15 minutes.
- 4 Place the pitcher onto the base and plug the unit into the electrical outlet.
- 5 Proceed to use the unit as before, making sure to not exceed the recommended maximum capacities.

Note: In order to ensure the highest possible standard for refurbished items, all units are thoroughly inspected as part of the process. For this item, water may be used during the refurbishing process and so; you may notice some condensation in the water reservoir. It is recommended to rinse the water reservoir with fresh water prior to its first use.

## REFURBISHED PRODUCT LIMITED NINETY DAYS WARRANTY

The **Refurbished Product Service Center** offers the following WARRANTY to the ORIGINAL purchaser of a product which we have refurbished.

This product that has been refurbished is warranted against any electronic or mechanical defects for a period of NINETY DAYS from the date of the original purchase by the consumer. Since this unit was sold as a refurbished item, the warranty does not apply to any cosmetic appearance items such as scratches. Should a defect occur, the **Refurbished Product Service Center** will repair or, at its option, replace defective unit/parts with new or rebuilt materials without charge for either parts or labor. Replacement unit/parts will be warranted for the remaining portion of the original warranty period.

This warranty does not cover installation or damage from accident, misuse, abuse, improper wiring, incorrect voltage, operating the unit against the instructions in the owner's manual or any product which has been opened, altered, or tampered with.

This warranty does not cover costs for removal and or installation of the unit for repair. Under no circumstances shall the service center be liable for any special, incidental or consequential damages or for any other expenses incurred by reason of use or sale of this product. This warranty is in lieu of any other warranties expressed or implied warranty of merchantability of fitness for particular use or otherwise.

This warranty gives the consumer specific legal rights and they may also have other rights which vary from State to State. Some States do not follow the exclusion or limitation of incidental or consequential damages, hence the above exclusion and limitations may not apply.

**Refurbished Product Service Center**  
13225 Marquardt Avenue Santa Fe Springs, CA 90670.

## WARRANTY REPAIR INFORMATION

If you need service on your unit and this product requires repair during the 90 days warranty period; please go to [www.ConsumerServiceRefurbish.com](http://www.ConsumerServiceRefurbish.com) or call the **Refurbished Product Service Center** at 562-946-3531 to obtain the required return authorization (RA) number. Pack the unit properly (the original carton is ideal for this purpose) along with a copy of your purchase receipt and a letter describing the problem. Send the unit freight prepaid and insured to:

**Refurbished Product Service Center,**  
**Att: Customer Service Department 13225 Marquardt Avenue Santa Fe Springs, CA 90670**

Your unit will be promptly repaired and returned to you. We will refuse to accept delivery of the returned unit unless the assigned RA number appears on the outside of the shipping carton.

**Owner's Information**  
(Keep for your permanent records)

NAME: \_\_\_\_\_

ADDRESS: \_\_\_\_\_

CITY: \_\_\_\_\_ STATE: \_\_\_\_\_ ZIP CODE: \_\_\_\_\_

PHONE: \_\_\_\_\_ E-MAIL: \_\_\_\_\_

MODEL: \_\_\_\_\_ SERIAL NO.: \_\_\_\_\_

## TECHNICAL SPECIFICATIONS

Voltage: 120V~, 60Hz

Illustrations may differ from actual product. We are constantly striving to improve our products, therefore the specifications contained herein are subject to change without notice.

NINJA and TOTAL CRUSHING are registered trademarks of SharkNinja Operating LLC.

This product may be covered by one or more U.S. patents. See [sharkninja.com/patents](http://sharkninja.com/patents) for more information.

© 2022 SharkNinja Operating LLC



PRINTED IN MEXICO Elbrd: M.C  
OBPN: CO650B\_IB\_SHEET\_MP\_MV6\_211117  
SC: 08-1-2022\_TAB MODEL: CO650B\_B

