

Please read this manual carefully before operating your unit and retain for future reference.

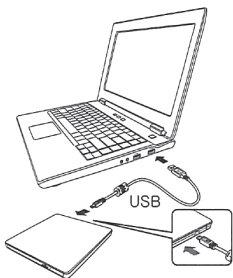
SAFETY INSTRUCTIONS

CAUTION: The laser used in the Drive can damage your eyes. Do not attempt to open the cover. To reduce the risk of electric shock, do not electric shock, do not remove the cover (or back). There are no user-serviceable parts inside. Refer servicing to qualified service personnel. Use of controls or performance of procedures other than those specified herein may result in hazardous radiation exposure.

WARNING: To reduce the risk of fire or electric shock, do not expose this appliance to rain or moisture.

Slim External model Installation

DVD-ROM/
DVD-MULTI
DRIVES

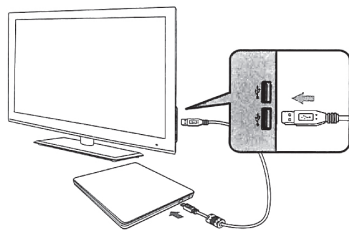


Connect the drive to the computer as shown in figure.
1 Connect the USB 2.0 cable to the drive.
2 Connect the other end of the USB 2.0 cable to your computer.

The drive may get its power from the PC USB power. All systems may not meet USB power requirements and full performance may not be achieved. In this case, connect to the USB power cable.

How to Connect with TV (A/V devices)

(Only support Slim External DVD-MULTI /BD DRIVES)



The image shown here is for illustrative purposes only and may be subject to change.

* This product is defaulted to ODD mode when it is powered on.

1. With the tray open, press and hold the 'Eject' button for 2 seconds. (The LED indicator will turn on, switching to TV mode. Press and hold the button again for 2 seconds with the tray open to return to ODD mode).
2. Insert your supported media into the drive. The disc file system will be converted to FAT32 and will be recognized as USB flash memory.
3. Select and play the files from your A/V device to enjoy videos, pictures and music. Refer to your A/V device owner's manual for more information.

To install your product, visit: www.cyberlink.com and download the software that you need.

REFURBISHED PRODUCT LIMITED THIRTY DAYS WARRANTY

The **Refurbished Product Service Center** offers the following WARRANTY to the ORIGINAL purchaser of a product which we have refurbished.

This product that has been refurbished is warranted against any electronic or mechanical defects for a period of THIRTY DAYS from the date of the original purchase by the consumer. Since this unit was sold as a refurbished item, the warranty does not apply to any cosmetic appearance items such as scratches. Should a defect occur, the **Refurbished Product Service Center** will repair or, at its option, replace defective unit/parts with new or rebuilt materials without charge for either parts or labor. Replacement unit/parts will be warranted for the remaining portion of the original warranty period.

This warranty does not cover installation or damage from accident, misuse, abuse, improper wiring, incorrect voltage, operating the unit against the instructions in the owner's manual or any product which has been opened, altered, or tampered with.

This warranty does not cover costs for removal and or installation of the unit for repair. Under no circumstances shall the service center be liable for any special, incidental or consequential damages or for any other expenses incurred by reason of use or sale of this product. This warranty is in lieu of any other warranties expressed or implied warranty of merchantability of fitness for particular use or otherwise.

This warranty gives the consumer specific legal rights and they may also have other rights which vary from State to State. Some States do not follow the exclusion or limitation of incidental or consequential damages, hence the above exclusion and limitations may not apply.

Refurbished Product Service Center
13225 Marquardt Avenue Santa Fe Springs, CA 90670.

WARRANTY REPAIR INFORMATION

If you need service on your unit and this product requires repair during the 30 days warranty period; please go to www.ConsumerServiceRefurbish.com or call the **Refurbished Product Service Center** at 562-946-3531 to obtain the required return authorization (RA) number. Pack the unit properly (the original carton is ideal for this purpose) along with a copy of your purchase receipt and a letter describing the problem. Send the unit freight prepaid and insured to:

Refurbished Product Service Center,
Att: Customer Service Department 13225 Marquardt Avenue Santa Fe Springs, CA 90670

Your unit will be promptly repaired and returned to you. We will refuse to accept delivery of the returned unit unless the assigned RA number appears on the outside of the shipping carton.

Owner's Information
(Keep for your permanent records)

NAME: _____
ADDRESS: _____
CITY: _____ STATE: _____
ZIP CODE: _____ PHONE: _____
E-MAIL: _____
MODEL: _____ SERIAL NO.: _____



805001347

PRINTED IN MEXICO Elbrd: A.M.
OBPN:3840HW1018Z SC: 11-11-2022_2P SHNMDL:
GP63EX70

