

IMPORTANT SAFETY INSTRUCTIONS For Household Use Only

WHEN USING YOUR SHARK® STEAM MOP, BASIC SAFETY PRECAUTIONS SHOULD ALWAYS BE FOLLOWED, INCLUDING THE FOLLOWING:

READ ALL INSTRUCTIONS BEFORE USING YOUR STEAM MOP.

WARNING: DANGER OF SCALDING. PLEASE USE CAUTION WHEN USING THE STEAM MOP. THE STEAM EMITTED FROM THE STEAM MOP IS VERY HOT.

WARNING: KEEP STEAM MOP AWAY FROM CHILDREN.

POLARIZED PLUG:

This appliance has a polarized plug (one blade is wider than the other). As a safety feature, this plug will fit into a polarized outlet only one way. If the plug does not fit fully into the outlet, reverse the plug. If it still does not fit, contact a qualified electrician. Do not attempt to defeat this safety feature.

WARNING: TO REDUCE THE RISK OF FIRE, ELECTRIC SHOCK OR INJURY:

- CAUTION: When in use, never turn the Steam Mop over or on its side. Never direct steam towards people, animals or plants.**
- Use the system only for its intended use.
- DO NOT** use outdoors.
- DO NOT** use for space heating purposes.
- DO NOT** leave the appliance unattended when plugged in. Always unplug the power cord from the electrical outlet when not in use and before servicing.
- DO NOT** allow the appliance to be used by children. Close attention is necessary when used near children, pets or plants.
- Use only as described in this manual.
- Use only manufacturer's recommended accessories.
- DO NOT** use with damaged cord or plug. If Steam Mop is not working as it should or has been dropped, damaged, left outdoors, or dropped into water, call a service center. Incorrect re-assembly or repair can cause a risk of electrical shock or injury to persons when the Steam Mop is used.
- To protect against a risk of electric shock, **DO NOT** immerse the steam mop into water or any other liquids.
- DO NOT** handle plug or steam mop with wet hands or operate appliance without shoes.
- When filling the Steam Mop during use, make sure the unit is unplugged and the mop head is pointed towards the floor. Hot steam can be released while filling the tank.
- DO NOT** pull or carry by power cord, use power cord as handle, close a door on the power cord, or pull the power cord around sharp edges or corners. Keep power cord away from heated surfaces.

- DO NOT** unplug by pulling on power cord. To unplug, grasp the plug not the power cord. Do not use extension cords or outlets with inadequate current carrying capacity.
- DO NOT** put any objects into the Steam Nozzle openings. Discontinue use if the steam nozzle is blocked.
- DO NOT** put hands or feet under the steam mop. It gets very hot.
- Use **ONLY** on flat, horizontal surfaces. Do not use on walls, counters or windows.
- DO NOT** use on leather, wax polished furniture or floors, synthetic fabrics, velvet or other delicate, steam sensitive materials.
- DO NOT** add cleaning solutions, vinegar, scented perfumes, oils or any other chemicals to the water used in this appliance as this may damage the unit or make it unsafe for use. If you live in a hard water area, we recommend using distilled water in your steam mop.
- Never leave any Pocket Pad in one spot while using or storing for any period of time, as this may damage your surfaces.**
- Carefully remove all Pocket Pads after you have unplugged and allowed the Steam Mop to cool.
- When cleaning the Steam Mop, unplug the power cord from the electrical outlet and clean with a dry or damp cloth. Do not pour water or use alcohol, benzene or paint thinner on the unit.
- Extreme caution should be exercised when using this appliance to clean stairs.
- Never use Steam Mop without pocket pad attached.
- Keep your work area well lit.
- Store Steam Mop indoors in a cool, dry place.
- To avoid circuit overload, do not operate another appliance on the same socket (circuit) as the steam cleaner.
- If an extension cord is absolutely necessary, an extension cord rated a minimum of 15 ampere, 14 gage cord should be used. Cords rated for less amperage may overheat. Care should be taken to arrange cord so that it cannot be pulled or tripped over.
- Always unplug and allow the Steam Mop to cool before removing or changing mop heads.

WARNING: Your Steam Mop is designed to clean hard floor surfaces that will withstand high heat. Do not use on unsealed wood or unglazed ceramic floors. On surfaces that have been treated with wax or some no wax floors, the sheen may be removed by the heat and steam action. It is always recommended to test an isolated area of the surface to be cleaned before proceeding. We also recommend that you check the use and care instructions from the floor manufacturer.

SAVE THESE INSTRUCTIONS

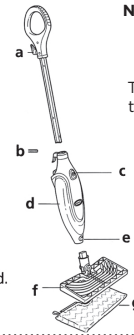
TECHNICAL SPECIFICATIONS:

Voltage: 120V, 60Hz

RECOMMENDED SCHEDULE FOR REPLACING CLEANING POCKET PADS:
Washable Pocket Pads: Every 3 months

PARTS

When assembling your steam mop there may be a little water in or around the water tank. This is because we test all our steam mops 100% before you buy them, so you get a quality Shark® Pro Steam Pocket® Mop.

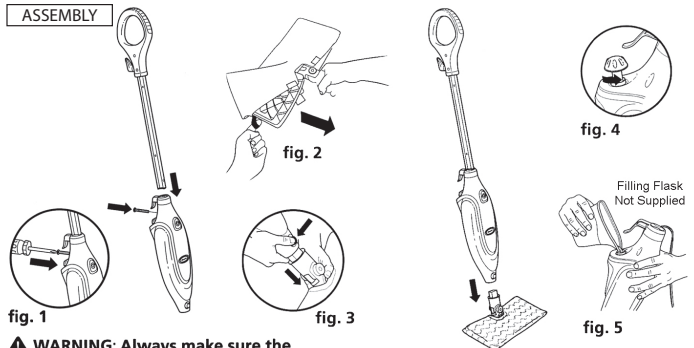


NOTE: Accessories may vary depending on the model. Refer to quick guide, if available.

The images shown here are for illustrative purposes only and may be subject to change.

*Phillips or flat head screwdriver can be used. Screwdriver not included.

ASSEMBLY



WARNING: Always make sure the Steam Mop is UNPLUGGED from the wall when not in use and when filling, changing the Mop Head or removing or changing the Pocket Pad. Always allow the Mop Head or the Pocket Pad to cool before removing or changing. To prolong the life of your Shark® Pro Steam Pocket® Mop, we recommend using distilled water. Make sure you only add water to the tank. Chemicals or cleaning solutions (including vinegar) may damage the Steam Mop and could be unsafe for you and your family.

ASSEMBLY

- Screw the Mop handle into the Steam Mop housing (screwdriver not included). (fig. 1)
- Secure the Mop Head inside the Pocket Pad. (fig. 2)
- Snap the Steam Mop Housing onto the Mop Head. (fig. 3)

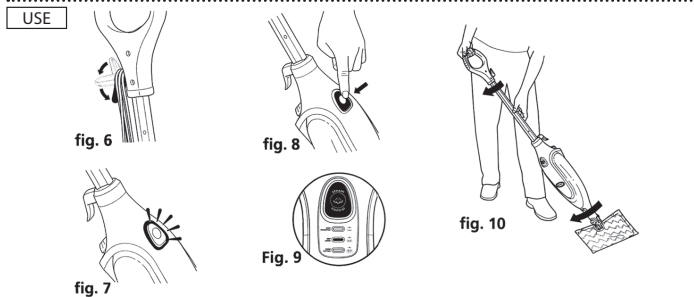
- Open the water tank cap, fill the tank with water, then replace and tighten the cap. (fig. 4) Use a filling flask and pour water into the tank. Do not overfill. Replace the cap on the water tank. (fig. 5)

NOTE: We recommend using distilled water to prolong the life of your Shark® Steam Pocket® Mop.

WARNING: When filling the Steam Mop during use, make sure the mop head is pointed towards the floor. Hot steam can be released while filling the tank.

IMPORTANT: Do not use on unsealed wood or unglazed ceramic floors. On surfaces that have been treated with wax or some no wax floors, the sheen may be removed by the heat and steam action. It is always recommended to test an isolated area of the surface to be cleaned before proceeding. We recommend that you check the use and care instructions from the floor manufacturer.

USE



IMPORTANT: Make sure you don't use the mop without attaching a Pocket Pad and adding water to the tank first. When you are using the mop for the first time, it might take longer than the normal 30 seconds to start steaming.

- Sweep or vacuum your floors prior to cleaning with your Steam Mop.
- Plug the power cord into an electrical outlet. The STEAM CONTROL button will flash blue. (fig. 6)
- Press the STEAM CONTROL button to select your steam setting. If the light does not turn on, reference the troubleshooting section. (fig. 7)
- Once for DUST, twice for MOP and three times for SCRUB. Pressing a fourth time will place the unit on standby. (fig. 8, Fig. 9)
- Use the shaggy side of the Pocket Pads to lift up and lock away all the dirt and debris and the scrubbing side to break up tough stains. (fig. 10)
- When the water tank is empty, the steam mop will stop producing steam. You can refill the water tank at any time as long as the mop is

UNPLUGGED from the outlet. Make sure that the unit is UNPLUGGED before switching the Mop Heads or Pocket Pads as well.

IMPORTANT: Please wait 2-3 minutes for the Steam Mop to cool off before removing the Mop Head or the Pocket Pads. Never leave the Steam Mop with a damp/wet Pocket Pad on any floor.




TO SANITIZE* WITH THE RECTANGLE MOP HEAD

- Start with a clean Pocket Pad.
- Plug in the unit and press the Steam Control Button to select either the Dust, Mop or Scrub Setting.
- Wait 30 seconds for the unit to begin producing steam.
- Start mopping on an appropriate sealed hard-floor surface with a forward and backward motion. After three minutes, your unit is ready to be used to sanitize.
- Using a forward and backward motion, move the unit over the area you seek to sanitize. Repeat at least 15 times.

*Sanitization studies were conducted under controlled test conditions. Household conditions and results may vary. With Rectangle Mop Head only.

USE CONT...

The Shark® Pro Steam Pocket® Mop has three unique steam settings so you can use the perfect amount of steam for the cleaning task at hand. See below for tips on when to use each setting.

Setting	Surfaces	Recommended Usage
DUST  LIGHT STEAM	Laminate Hardwood Marble	Provides light steam, safe for cleaning delicate surfaces Light cleaning and dusting Loosen and lift light dirt Sanitize* floors
MOP  NORMAL STEAM	Hardwood Marble Tile Stone	Provides normal steam for use on most surfaces and large cleaning tasks Basic, everyday cleaning Remove spots and smaller messes Clean moderate and heavily-trafficked areas Sanitize* floors
SCRUB  HEAVY STEAM	Tile Stone	Provides the heaviest steam for use hard to clean surfaces and deep cleaning tasks Tough cleaning and removal of stuck-on messes and stains Deep clean heavily-trafficked areas Cut through heavy dirt and grime Sanitize* floors

* Sanitization studies were conducted under controlled test conditions. Household conditions and results may vary. With Rectangle Mop Head only.

NOTE: Select cleaning accessories are included.

MAINTENANCE

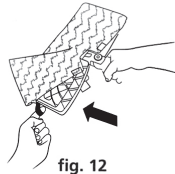


fig. 12



fig. 13

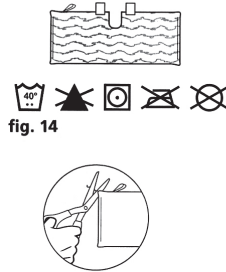


fig. 14



fig. 15

AFTER USE AND STORAGE

- When you have finished using the Steam Mop, press the **Steam Control** switch until the LED light turns flashing BLUE. This stops the unit from steaming. Unplug the cord from the outlet and place the Steam Mop into the upright position. Let the unit cool for 2-3 minutes.

Remove the Pocket Pad by releasing the quick fasteners and using the loop on the side of the Pocket Pad, avoiding contact with the hot Pocket Pad. (fig. 12)

- To store the Shark® Pro Steam Pocket® Mop hanging up, first remove the head (after it has cooled and the steam has been released), then hang on a large hook (not included). (fig. 13)

NOTE: Before storing the appliance for an extended period of time, emptying the water tank is recommended.

POCKET PAD CARE INSTRUCTIONS

Care

Before washing, close the hook-and-loop fasteners so they won't snag on the Pocket Pads. Machine wash the Pocket Pads separately with warm water using liquid detergent.

NEVER USE BLEACH, POWDERED DETERGENT, OR FABRIC SOFTENERS

as they may damage or leave a coating on the Pocket Pads that will reduce their cleaning performance and absorbency. Pocket Pads should be line-dried or tumble-dried on a low setting, as this will extend the life of the microfiber fabric. (fig. 14)

Loose fibers can indicate wearing of the microfiber fabric. Do not pull the loose fibers as this can cause the weave to come undone. Simply trim the loose fibers with scissors. (fig. 15)

Replacement

For best cleaning results, we recommend replacing your Pocket Pads every 3 to 4 months following normal use. As with any fabric, dirt particles, grease, friction, and repeated washing can cause the fibers to break down, and you may notice an increase in the effort needed to push or pull the Steam Mop.

TROUBLESHOOTING

PROBLEM	POSSIBLE REASONS & SOLUTIONS
The Pro Steam Pocket® Mop will not turn-on. (The Blue Light is NOT Illuminated.)	Ensure the power cord is plugged in correctly to a working electrical outlet.
The Pro Steam Pocket® Mop will not make steam.	Verify the Steam Control button is illuminating a solid blue color, indicating a steam setting has been selected. Ensure that the unit is filled with water.
Cannot activate steam mode on the Pro Steam Pocket® Mop. (Blue light remains flashing.)	Unplug the unit from the electrical outlet, wait 15-30 seconds, then plug the unit back in.
The Pro Steam Pocket® Mop leaves water on the floor or is becoming hard to push.	Confirm that the pocket pad is properly affixed to the mop head and not overly saturated. If the pocket pad is overly wet, unplug the unit, wait 2 to 3 minutes for the pocket pad to cool, and then replace with a clean dry pocket pad.
The Pro Steam Pocket® Mop left a white spot on the floor.	Always use the wet steam mop in the correct manner. Never leave the unit with a wet pocket pad idle for an extended period of time.
Floors are cloudy, streaky or spotty after steaming.	This may be the result of residue from chemicals previously used to treat the floor. Be sure to follow the "Steps to a Shark® Clean Floor" and the "Pocket Care Guide" in your manual to prevent this issue.
Unable to Resolve Your Issue?	If you are still having difficulty using the Pro Steam Pocket® Mop, call a service center

REFURBISHED PRODUCT LIMITED NINETY DAYS WARRANTY

The **Refurbished Product Service Center** offers the following WARRANTY to the ORIGINAL purchaser of a product which we have refurbished.

This product that has been refurbished is warranted against any electronic or mechanical defects for a period of NINETY DAYS from the date of the original purchase by the consumer. Since this unit was sold as a refurbished item, the warranty does not apply to any cosmetic appearance items such as scratches. Should a defect occur, the **Refurbished Product Service Center** will repair or, at its option, replace defective unit/parts with new or rebuilt materials without charge for either parts or labor. Replacement unit/parts will be warranted for the remaining portion of the original warranty period.

This warranty does not cover installation or damage from accident, misuse, abuse, improper wiring, incorrect voltage, operating the unit against the instructions in the owner's manual or any product which has been opened, altered, or tampered with.

This warranty does not cover costs for removal and or installation of the unit for repair. Under no circumstances shall the service center be liable for any special, incidental or consequential damages or for any other expenses incurred by reason of use or sale of this product. This warranty is in lieu of any other warranties expressed or implied warranty of merchantability of fitness for particular use or otherwise.

This warranty gives the consumer specific legal rights and they may also have other rights which vary from State to State. Some States do not follow the exclusion or limitation of incidental or consequential damages, hence the above exclusion and limitations may not apply.

Refurbished Product Service Center

13225 Marquardt Avenue Santa Fe Springs, CA 90670.

WARRANTY REPAIR INFORMATION

If you need service on your unit and this product requires repair during the 90 days warranty period; please go to www.ConsumerServiceRefurbish.com or call the **Refurbished Product Service Center** at 562-946-3531 to obtain the required return authorization (RA) number. Pack the unit properly (the original carton is ideal for this purpose) along with a copy of your purchase receipt and a letter describing the problem. Send the unit freight prepaid and insured to:

Refurbished Product Service Center,

Att: Customer Service Department 13225 Marquardt Avenue Santa Fe Springs, CA 90670

Your unit will be promptly repaired and returned to you.

We will refuse to accept delivery of the returned unit unless the assigned RA number appears on the outside of the shipping carton.

Owner's Information

(Keep for your permanent records)

NAME: _____

ADDRESS: _____

CITY: _____ STATE: _____ ZIP CODE: _____

PHONE: _____ E-MAIL: _____

MODEL: _____ SERIAL NO.: _____



804108958