

SONY®

CD / DVD Player REFERENCE GUIDE MODEL: DVP-SR510H

The image shown here is for illustrative purposes only and may be subject to change.



BE SURE TO READ THE SAFETY PRECAUTIONS IN THE OWNER'S MANUAL CAREFULLY BEFORE USING THIS UNIT.

WARNING

To reduce the risk of fire or electric shock, do not expose this apparatus to rain or moisture.

To avoid electrical shock, do not open the cabinet. Refer servicing to qualified personnel only.

The AC power cord must be changed only at a qualified service shop.

Batteries or batteries installed apparatus shall not be exposed to excessive heat such as sunshine, fire or the like.

CAUTION

The use of optical instruments with this product will increase eye hazard. As the laser beam used in this CD/DVD player is harmful to eyes, do not attempt to disassemble the cabinet.

Refer servicing to qualified personnel only.



This symbol is intended to alert the user to the presence of uninsulated "dangerous voltage" within the product's enclosure that may be of sufficient magnitude to constitute a risk of electric shock to persons.

This symbol is intended to alert the user to the presence of important operating and maintenance (servicing) instructions in the literature accompanying the appliance.

Precautions

To prevent fire or shock hazard, do not place objects filled with liquids, such as vases, on the apparatus.

The player is not disconnected from the AC power source as long as it is connected to the wall outlet, even if the player itself has been turned off.

Do not install this player in a confined space, such as a bookshelf or similar unit.

Install the player so that the AC power cord can be unplugged from the wall socket immediately in the event of trouble.

If the player is brought directly from a cold to a warm location, or is placed in a very damp room, moisture may condense on the lenses inside the player. Should this occur, the player may not operate properly. In this case, remove the disc and leave the player turned on for about half an hour until the moisture evaporates.

- Reorient or relocate the receiving antenna.
- Increase the separation between the equipment and receiver.
- Connect the equipment into an outlet on a circuit different from that to which the receiver is connected.
- Consult the dealer or an experienced radio/TV technician for help.

Important Safety Instructions

- Read these instructions.
- Keep these instructions.
- Heed all warnings.
- Follow all instructions.
- Do not use this apparatus near water.
- Clean only with dry cloth.
- Do not block any ventilation openings. Install in accordance with the manufacturer's instructions.
- Do not install near any heat sources such as radiators, heat registers, stoves, or other apparatus (including amplifiers) that produce heat.
- Do not defeat the safety purpose of the polarized or grounding-type plug. A polarized plug has two blades with one wider than the other. A grounding type plug has two blades and a third grounding prong. The wide blade or the third prong are provided for your safety. If the provided plug does not fit into your outlet, consult an electrician for replacement of the obsolete outlet.
- Protect the power cord from being walked on or pinched particularly at plugs, convenience receptacles, and the point where they exit from the apparatus.

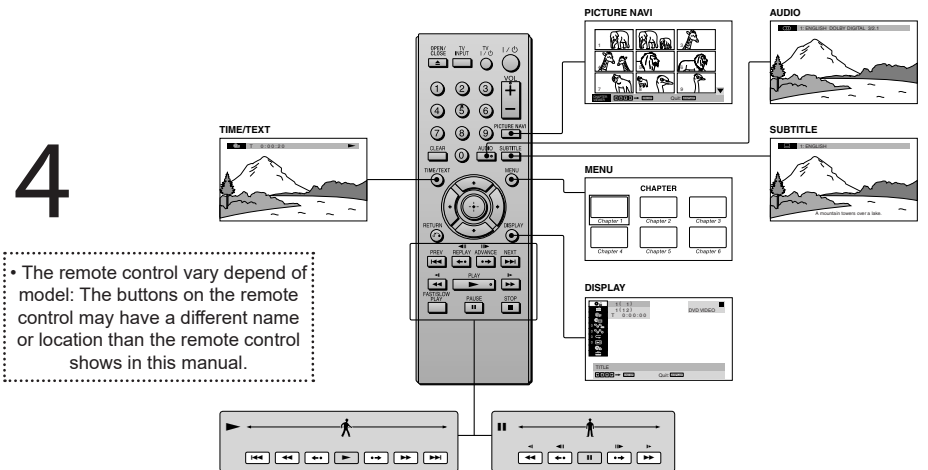
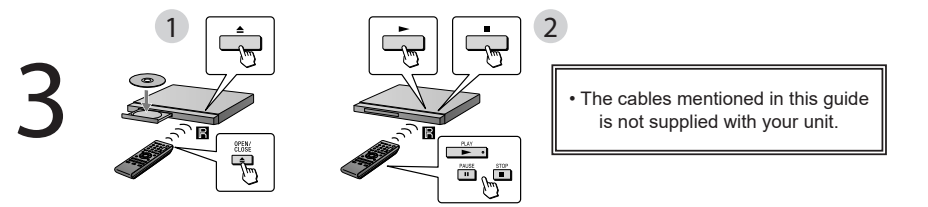
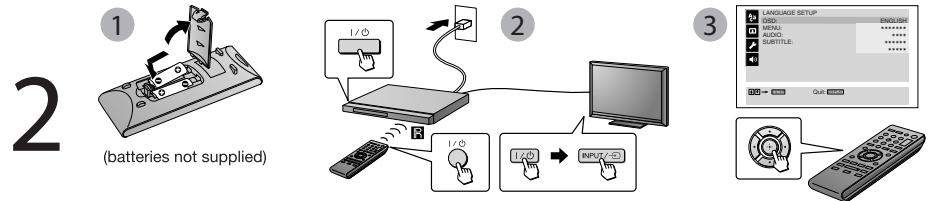
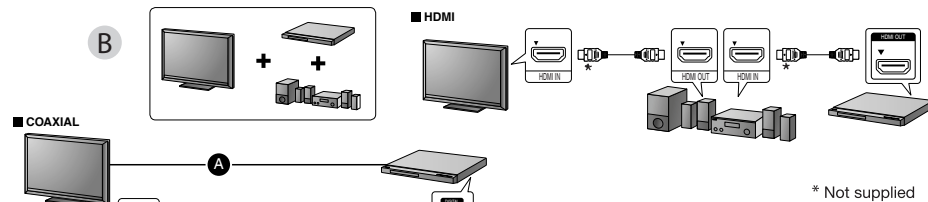
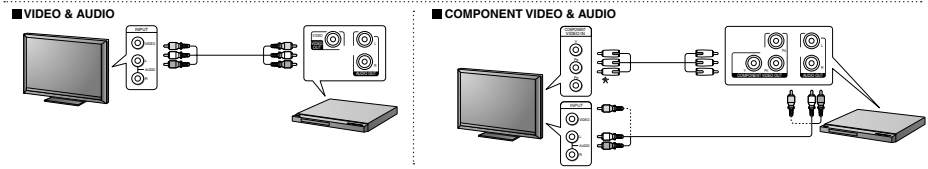
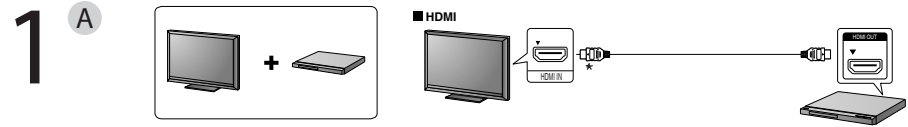
- Use only with the cart, stand, tripod, bracket, or table specified by the manufacturer, or sold with the apparatus. When a cart is used, use caution when moving the cart/apparatus combination to avoid injury from tip-over.

- Only use attachments/accessories specified by the manufacturer.

- Use only with the cart, stand, tripod, bracket, or table specified by the manufacturer, or sold with the apparatus. When a cart is used, use caution when moving the cart/apparatus combination to avoid injury from tip-over.

- Unplug this apparatus during lightning storms or when unused for long periods of time.

- Refer all servicing to qualified service personnel. Servicing is required when the apparatus has been damaged in any way, such as power-supply cord or plug is damaged, liquid has been spilled or objects have fallen into the apparatus, the apparatus has been exposed to rain or moisture, does not operate normally, or has been dropped.



The remote control vary depend of model. The buttons on the remote control may have a different name or location than the remote control shows in this manual.

Playable file format

Video: MPEG-1 (Cyber-shot data)

Photo: JPEG (DCF format)

Music: MP3 (except for mp3PRO)/WMA (except for WMA Pro)*1, *2/AAC*1, *2/LPCM/WAVE

*1 Files with copyright protection (Digital Right Management) cannot be played.

*2 The player does not play coded files such as Lossless.

Supported extensions: ".mpg", ".mpeg", ".jpg", ".mp3", ".wma", ".m4a", ".wav"

Supported discs: DVD, DVD±RW/±R/±R DL, Music CD/Super VCD, CD-R/RW

- DATA CDs recorded according to ISO 9660 Level 1/Level 2, or its extended format, Joliet.
- DATA DVDs recorded according to UDF.
- The player will play any file in the above, even if the file format differs. Playing such data may generate noise that can result in speaker damage.
- To play a complex hierarchy of folders may take some time. Create albums with no more than two hierarchies.
- Some video, photo, and music files may not play, depending on the encoding/recording condition.
- To start playback and proceed to the next or another album/file may take some time.
- The player will recognize a maximum of 200 albums and 600 files. It can recognize up to 300 music files and 300 photo files when "PHOTO (MUSIC)" is selected.
- The player may not play a combination of two or more video files.
- The player cannot play a video file of size more than 720 (width) × 576 (height)/2 GB.
- Depending on the file, playback may not be smooth. You are recommended to create the file at a lower bit rate.
- The player may not play back the high bit rate video file on the DATA CD smoothly. You are recommended to play back using DATA DVD.

Note about recordable media

Some recordable media cannot be played on this player due to the recording quality or physical condition of the disc, or the characteristics of the recording device and authoring software. The disc will not play if it has not been correctly finalized. Also some DATA discs created in Packet Write format cannot be played.

For player that cannot play images that contain a copy protection only

Images in DVD-VR mode with CPRM (Content Protection for Recordable Media) protection may not be played.

Note on playback operations of DVDs and VIDEO CDs

Some playback operations of DVDs and VIDEO CDs may be intentionally set by software producers. Since this player plays DVDs and VIDEO CDs according to the disc contents the software producers designed,

PRINTED IN MEXICO
OBPN: 4-400-834-31(1)
SC: 06 - 12 - 12 4P/TAB

some playback features may not be available.

Also, refer to the operating instructions supplied with the DVDs or VIDEO CDs.

Note on discs

This unit is designed to playback discs that conform to the Compact Disc (CD) standard. DualDiscs and some music discs encoded with copyright protection technologies do not conform to the Compact Disc (CD) standard. Therefore, these discs may not be compatible with this unit.

Specifications

System

Laser: Semiconductor laser

Inputs/Outputs

- LINE OUT L/R (AUDIO): Phono jack
- DIGITAL OUT (COAXIAL): Phono jack
- LINE OUT (VIDEO): Phono jack

- LINE OUT (VIDEO): Phono jack
- HDMI OUT: HDMI 19 pin-Standard Connector

General

- Power requirements: 120 V AC, 60 Hz
- Power consumption: 6 W
- Dimensions (approx.): 270 × 38.5 × 209 mm (10 5/8 × 1 1/2 × 8 1/4 in.) (width/height/depth) incl. projecting parts
- Mass (approx.): 950 g (2 lb 2 oz)
- Operating temperature: 5 °C to 35 °C (41 °F to 95 °F)
- Operating humidity: 25% to 80%

Supplied accessories

- Audio/Video cord (1)
- Remote commander (remote) (1)

Specifications and design are subject to change without notice.

LANGUAGE CODE LIST

Code	Language	Code	Language	Code	Language	Code	Language
1027	Afar	1183	Irish	1347	Maori	1507	Samoan
1028	Abkhazian	1186	Scots Gaelic	1349	Macedonian	1508	Shona
1032	Afrikaans	1194	Galician	1350	Malayalam	1509	Somali
1039	Amharic	1196	Guarani	1352	Mongolian	1511	Albanian
1044	Arabic	1203	Gujarati	1353	Moldavian	1512	Serbian
1045	Assamese	1209	Hausa	1356	Marathi	1513	Siswati
1051	Aymara	1217	Hindi	1357	Malay	1514	Sesotho
1052	Azerbaijani	1226	Croatian	1358	Maltese	1515	Sundanese
1053	Bashkir	1229	Hungarian	1363	Burmese	1516	Swedish
1057	Byelorussian	1233	Armenian	1365	Nauru	1517	Swahili
1059	Bulgarian	1235	Interlingua	1369	Nepali	1521	Tamil
1060	Bihari	1239	Interlingue	1376	Dutch	1525	Telugu
1061	Bislama	1245	Inupiak	1379	Norwegian	1527	Tajik
1066	Bengali;	1248	Indonesian	1393	Occitan	1528	Thai
	Bangla	1253	Icelandic	1403	(Afan)Oromo	1529	Tigrinya
1067	Tibetan	1254	Italian	1408	Oriya	1531	Turkmen
1070	Breton	1257	Hebrew	1417	Punjabi	1532	Tagalog
1079	Catalan	1261	Japanese	1428	Polish	1534	Setswana
1093	Corsican	1269	Yiddish	1435	Pashto;	1535	Tonga
1097	Czech	1283	Javanese		Pushto	1538	Turkish
1103	Welsh	1287	Georgian	1436	Portuguese	1539	Tsonga
1105	Danish	1297	Kazakh	1463	Quechua	1540	Tatar
1109	German	1298	Greenlandic	1481	Rhaeto-	1543	Twi
1130	Bhutani	1299	Cambodian		Romance	1557	Ukrainian
1142	Greek	1300	Kannada	1482	Kirundi	1564	Urdu
1144	English	1301	Korean	1483	Romanian	1572	Uzbek
1145	Esperanto	1305	Kashmiri	1489	Russian	1581	Vietnamese
1149	Spanish	1307	Kurdish	1491	Kinyarwanda	1587	Volapük
1150	Estonian	1311	Kirghiz	1495	Sanskrit	1613	Wolof
1151	Basque	1313	Latin	1498	Sindhi	1632	Xhosa
1157	Persian	1326	Lingala	1501	Sangho	1665	Yoruba
1165	Finnish	1327	Laothian	1502	Serbo-	1684	Chinese
1166	Fiji	1332	Lithuanian		Croatian	1697	Zulu
1171	Faroese	1334	Latvian;	1503	Singhalese		
1174	French		Lettish	1505	Slovak		
1181	Frisian	1345	Malagasy	1506	Slovenian	1703	Not specified

ISO 639: 1988 (E/F) standard

PARENTAL CONTROL AREA CODE LIST

Code	Area	Code	Area	Code	Area	Code	Area
2044	Argentina	2165	Finland	2362	Mexico	2149	Spain
2047	Australia	2174	France	2376	Netherlands	2499	Sweden
2046	Austria	2109	Germany	2390	New Zealand	2086	Switzerland
2057	Belgium	2248	India	2379	Norway	2528	Thailand
2070	Brazil	2238	Indonesia	2427	Pakistan	2184	United Kingdom
2079	Canada	2254	Italy	2424	Philippines		
2090	Chile	2276	Japan	2436	Portugal		
2092	China	2304	Korea	2489	Russia		
2115	Denmark	2363	Malaysia	2501	Singapore		

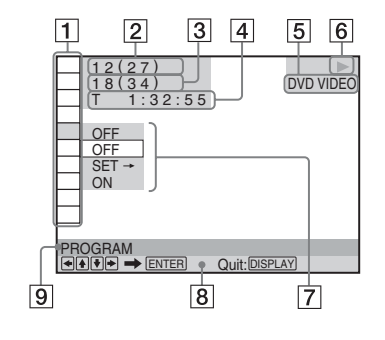
Playback

Control Menu display

Use the Control Menu to select a function and to view related information.

Press **DISPLAY**.

To change the Control Menu display, press DISPLAY again.



- Control Menu items**
- Currently playing title/Total number of titles**
- Currently playing chapter/Total number of chapters**
- Playing time**
- Selected media type**
- Playback status**
- Selected item icon/menu options**
- Operation message**
- Selected Control Menu item**

Menu list

Item	Item Name, Function
	TITLE/SCENE/TRACK
	CHAPTER/INDEX
	TRACK
Selects the title, scene, track, chapter, or index to be played.	
	TIME/TEXT
Checks the elapsed time and the remaining playback time. Input the time code for picture and music search (DVD only).	
	TOP MENU/MENU
(DVD VIDEO only) TOP MENU: Displays the top menu. MENU: Displays the menu.	

	ORIGINAL/PLAY LIST
Selects the type of title (DVD-VR mode) to be played: ORIGINAL, or edited PLAY LIST.	
	PROGRAM *1, *2
Selects the title, chapter, or track to play in the order you want.	
1 Select “SET →,” then press ENTER and select the title (T), chapter (C), or track (T) you want to program, and press ENTER.	
2 Repeat selecting the title, chapter, or track.	
3 Press ►.	
	SHUFFLE *1, *2
Plays the title, chapter, or track in random order.	

	REPEAT *1, *2
Plays all titles/tracks/albums or a single title/ chapter/track/album/file repeatedly.	

	A-B REPEAT *1, *2
Specifies the parts you want to play repeatedly.	
1 During playback, select “SET →,” then press ENTER. The “A-B REPEAT” setting bar appears.	
2 When you find the starting point (point A), press ENTER.	
3 When you reach the ending point (point B), press ENTER again.	

	PARENTAL CONTROL
Set to prohibit playback on this player. PLAYER →: Playback of some DVD VIDEOS can be limited according to a predetermined level such as the age of the users. Scenes may be blocked or replaced with different scenes (Parental Control). PASSWORD →: Enter a 4-digit password using the number buttons. Also use this menu to change the password.	

Parental Control (limited playback)

You can set a playback limitation level.

- Select “PLAYER →,” then press ENTER. Enter or re-enter your 4-digit password, then press ENTER.
- Press **↑/↓** to select “STANDARD,” then press ENTER. Press **↑/↓** to select an area, then press ENTER. When you select “OTHERS →,” select and enter a standard code. See “PARENTAL CONTROL AREA CODE LIST” at the end of this manual.
- Press **↑/↓** to select “LEVEL,” then press ENTER. Press **↑/↓** to select the level, then press ENTER. Parental Control setting is complete. The lower the value, the stricter the limitation. To turn off the Parental Control function, set “LEVEL” to “OFF.”

If you forget your password, enter “199703” in the password box, press ENTER, and then enter a new 4-digit password.

	SETUP
QUICK: Use Quick Setup to choose the desired language of the on-screen display, the aspect ratio of the TV and the audio output signal. CUSTOM: In addition to the Quick Setup setting, you can adjust various other settings.	
RESET: Returns the settings in “SETUP” to the default setting.	

	ZOOM *1
Magnifies the image up to four times the original size, scroll using ←/↑/↓/→ .	
	ANGLE
Changes the angle.	
	CUSTOM PICTURE MODE

Selects the picture quality that best suits the program you are watching.
STANDARD: Displays a standard picture.
DYNAMIC: Produces a bold dynamic picture by increasing the picture contrast and the color intensity.
CINEMA: Enhances details in dark areas by increasing the black level.
MEMORY →: Adjusts the picture in greater detail.

	SHARPNESS
Exaggerates the outline of the image to produce a sharper picture. OFF: Cancels this option. 1: Enhances the outline. 2: Enhances the outline more than 1.	

	AV SYNC
Adjust the delay between the picture and sound. This function is not effective when: <ul style="list-style-type: none">– you use the DIGITAL OUT (COAXIAL) jack, and set “DOLBY DIGITAL” and “DTS” in “AUDIO SETUP” to “DOLBY DIGITAL” and “ON” respectively (page 8). – you connect a Dolby Digital or DTS-compliant device via the HDMI OUT jack, and set “DOLBY DIGITAL” and “DTS” in “AUDIO SETUP” to “DOLBY DIGITAL” and “ON” respectively.	

- Select “SET →,” then press ENTER. The “AV SYNC” adjustment bar appears.
- Press **→** repeatedly to adjust the delay. Each time you press **←/→**, the delay is adjusted by 10 milliseconds.
- Press ENTER. The selected setting takes effect. To reset the “AV SYNC” setting, press CLEAR in step 2.

- ^{*1} To return to normal play, select “OFF” or press CLEAR.
- ^{*2} The play mode is canceled when:
 - you open the disc tray.
 - you turn off the player.

◆Items for DATA files

Item	Item Name, Function
	ALBUM
Selects the album that contains music and photo files to be played.	
	FILE
Selects the photo file to be played.	
	ALBUM
Selects the album that contains the video file to be played.	
	FILE
Selects the video file to be played.	
	DATE
Displays the date the picture was taken by a digital camera.	
	INTERVAL *
Specifies the duration for which the slides are displayed on the screen.	
	EFFECT *

Selects the effects to be used for changing slides during a slide show.
MODE 1: The images randomly cycle through the effects.
MODE 2: The image sweeps in from top left to bottom right.
MODE 3: The image sweeps in from top to bottom.
MODE 4: The image sweeps in from left to right.
MODE 5: The image stretches out from the center of the screen.
OFF: Turns off this function.

	MEDIA
Selects the media type you want to play. VIDEO: Plays video files. PHOTO (MUSIC): Plays photo and music files as a slide show. You can view a slide show	

with sound when music and photo files are placed in the same album. If the playing time of either music or photos is longer, the longer one continues without sound or image.

PHOTO: Plays photo files.

MUSIC: Plays music files. Press SUBTITLE while playing music files that contain unsynchronized lyric information. The player supports MP3 ID3 Lyrics only.

* Depending on the file, this function may not be possible.

The player automatically returns to standby mode

If any button on the player or remote is not pressed for more than 25 minutes, the player automatically returns to standby mode.

To play VIDEO CDs with PBC functions

When you start playing a VIDEO CD with PBC (Playback control) functions, the menu for your selection appears.

To play without using PBC

Press **◀◀/▶▶** or the number buttons while the player is stopped to select a track, then press **▶** or ENTER. To return to PBC playback, press **■** twice, then press **▶**.

Controlling TVs with the remote

You can control the sound level, input source, and power switch of your Sony TV with the supplied remote.

If your TV is listed in the table below, set the appropriate manufacturer’s code.

When you replace the batteries of the remote, set the appropriate code number again.

- While holding down TV **I/⏻**, press the number buttons to select your TV’s manufacturer’s code.
 - Release TV **I/⏻**.
- | | |
|---|--------------|
| Code numbers of controllable TVs | |
| Sony | 01 (default) |
| Hitachi | 02 |
| LG/Goldstar/NEC | 04 |
| MGA/Mitsubishi | 13 |
| Panasonic | 19 |
| Philips | 21 |
| Pioneer | 16 |
| RCA | 10 |
| Samsung | 20 |
| Sharp | 18 |
| Toshiba | 07 |

Viewing a high quality slide show (PhotoTV HD)

If you have a Sony TV that is compatible with “PhotoTV HD,” you can enjoy the best quality images. “PhotoTV HD” is activated when the player is connected to a TV by an HDMI cord and “JPEG RESOLUTION” in “HDMI SETUP” is set to “PhotoTV HD”

Custom Menu

You can adjust various settings. Press DISPLAY when the player is in stop mode, select (SETUP), and then select “CUSTOM.” The CUSTOM menu appears.

Menu list

Item	Item Name, Function
	LANGUAGE SETUP
OSD (On-Screen Display): Switches the display language on the screen. MENU *1: Selects the desired language for the disc’s menu. (DVD VIDEO only) AUDIO *1: Switches the language of the sound track. When you select “ORIGINAL,” the language given priority in the disc is selected. (DVD VIDEO only) SUBTITLE *1: Switches the language of the subtitle recorded on the DVD VIDEO. When you select “AUDIO FOLLOW,” the language for the subtitles changes according to the language you selected for the sound track. (DVD VIDEO only)	

	SCREEN SETUP
TV TYPE: Selects the aspect ratio of the connected TV.	

16:9	
4:3 LETTER BOX	
4:3 PAN SCAN	

SCREEN SAVER: When set to “ON,” the screen saver appears when the player is in pause or stop mode for 15 minutes. Press **▶** to turn off the screen saver.

BACKGROUND: Selects the background color or picture on the TV screen. If you set “JACKET PICTURE,” even though the disc does not contain a jacket picture, the “GRAPHICS” picture appears.
BLACK LEVEL: Selects the black level (setup level) for video signals output from the jacks other than HDMI OUT.
MODE (PROGRESSIVE): If you select “AUTO,” the player detects the format (film-based or video-based), and converts to the appropriate version.
4:3 OUTPUT: This setting is effective only when you set “TV TYPE” to “16:9.” Select “FULL” when you can change the aspect ratio on your TV.

	CUSTOM SETUP
AUTO PLAY: When set to “ON,” the player automatically starts playback when the player is turned on by a timer (not supplied). PAUSE MODE: Selects the picture in pause mode. Normally select “AUTO.” When the picture is output in high resolution, set to “FRAME.” (DVD only)	

TRACK SELECTION: Gives the sound track which contains the highest number of channels priority when you play a DVD VIDEO on which multiple audio formats (PCM, DTS, or Dolby Digital format) are recorded. If you select “AUTO,” priority is given. (DVD VIDEO only)
IMAGE QUALITY: Selects the priority display to either high quality image or quick speed. (Photo files only)
MULTI-DISC RESUME: Switches the Multi-disc Resume setting on or off. Resume playback can be stored in memory for up to 6 different DVD VIDEOS/VIDEO CDs. If you start the settings again, the resume point is cleared. (DVD VIDEO/VIDEO CD only)

	AUDIO SETUP
AUDIO DRC (Dynamic Range Control)*2: Set according to the surrounding environment. Set to “TV MODE” when the smallest sounds are indiscernible, or set to “WIDE RANGE” when the listening environment is good, for example, in a home movie theater. DOWNMIX *2: Switches the method for mixing down to 2 channels when you play a DVD which has rear sound elements (channels), or is recorded in Dolby Digital format. Normally select “DOLBY SURROUND.” DIGITAL OUT: Selects if audio signals are output via the DIGITAL OUT (COAXIAL)/HDMI OUT jack. When you select “ON,” set also the following “DOLBY DIGITAL,” “DTS,” or “48kHz/96kHz PCM.”	

DOLBY DIGITAL: Selects the type of Dolby Digital signal. Set to “D-PCM” when the player is connected to an audio component without a built-in Dolby Digital decoder.
DTS: Selects the type of DTS audio signal. Set to “ON” when you play a DVD VIDEO with DTS sound tracks. Do not set to “ON” when you connect the player to an audio component without a DTS decoder.
48kHz/96kHz PCM: Selects the sampling frequency of the digital audio output signal. (DVD VIDEO only)

	HDMI SETUP
You can adjust items related to HDMI connection. HDMI RESOLUTION *3: Selects the type of video signal output from the HDMI OUT jack. If “AUTO (1920×1080p)” (default) is selected, the player outputs video signals of the highest resolution acceptable for your TV. If the picture is not clear, unnatural or otherwise not to your satisfaction, try another option that suits the disc, TV/projector, etc. For details, refer also to the instruction manual supplied with the TV/projector, etc. You cannot select this when “JPEG RESOLUTION” is set to “PhotoTV HD.”	

JPEG RESOLUTION: Selects the type of JPEG resolution so that you can enjoy a high picture quality via HDMI connection. This setting is effective only when you set “TV TYPE” to “16:9.” You cannot select this when “HDMI RESOLUTION” is set to “720×480p.” “(1920×1080i) HD □” and “(1920×1080i) HD” are effective only when you set “HDMI RESOLUTION” to “1920×1080i.” If you set this setting to “PhotoTV HD,” “(1920×1080i) HD □” or “(1920×1080i) HD,” the effect, rotation, and zoom functions are not available.
YCbCr/RGB (HDMI): Selects the type of HDMI signal output from the HDMI OUT jack. Set to “RGB” if the playback picture is distorted. You cannot select this when “JPEG RESOLUTION” is set to “PhotoTV HD.”
AUDIO (HDMI): Selects the type of audio signal output from the HDMI OUT jack. Set to “PCM” if you connect the player to a TV that is not compatible with DOLBY DIGITAL/DTS signals.

- ^{*1} When you select “OTHERS →,” select and enter a language code. See “LANGUAGE CODE LIST” at the end of this manual.
- ^{*2} This function affects the output from the following jacks:
 - LINE OUT L/R (AUDIO) jacks.
 - DIGITAL OUT (COAXIAL)/HDMI OUT jack only when “DOLBY DIGITAL” is set to “D-PCM.”
- ^{*3} If the picture does not appear normally or goes blank, reset the setting. Press **I/⏻** to turn off, enter “369,” and then press **I/⏻** to turn on the player again.

Information

Troubleshooting

If you experience any of the following difficulties while using the player, use this troubleshooting guide to help remedy the problem before requesting repairs. Should any problem persist, consult your nearest service center.

The power is not turned on.
→ Check that the power cord is connected securely.

There is no picture/picture noise appears.
→ Re-connect the connecting cord securely.
→ The connecting cords are damaged.
→ Check the connection to your TV and switch the input selector on your TV so that the signal from the player appears on the TV screen.
→ The disc is dirty or flawed.
→ Press I/⏻ to turn off the player, and enter “369” using the number buttons on the remote, then press I/⏻ to turn on the player again.

There is no sound.
→ Re-connect the connecting cord securely.
→ The connecting cord is damaged.
→ The player is in pause mode or in Slow-motion Play mode.
→ The player is in fast forward or fast reverse mode.

The remote does not function.
→ The batteries in the remote are weak.
→ The remote is not pointed at the remote sensor on the player.
→ When you operate the player by pressing buttons on the remote in sequence, press the buttons within 5 seconds of each other.

The disc does not play.
→ The disc is turned over.
Insert the disc with the playback side facing down.
→ The disc is skewed.
→ The player cannot play certain discs.
→ The region code on the DVD does not match the player.
→ Moisture has condensed inside the player.
→ The player cannot play a recorded disc that is not correctly finalized.

The player does not operate properly.
→ When static electricity, etc., causes the player to operate abnormally, unplug the player.

“C:13:***” appears on the screen.
→ Clean the disc with a cleaning cloth or check its format.

There is no picture/sound when connected to the HDMI OUT jack.
→ Change the “HDMI RESOLUTION” setting in “HDMI SETUP.” The problem may be solved.
→ The equipment connected to the HDMI OUT jack does not conform to the audio signal format, in this case set “AUDIO (HDMI)” in “HDMI SETUP” to “PCM.”
→ Try the following: ①Turn the player off and on again. ②Turn the connected equipment off and on again. ③Disconnect and then connect the HDMI cord again.