




Shark

Shark Air Purifier 3-in-1

OWNER'S GUIDE

	Read and review instructions for operation and use.
	Indicates the presence of a hazard that can cause personal injury, death, or substantial property damage if the warning included with this symbol is ignored.
	For indoor and household use only.

IMPORTANT SAFETY INSTRUCTIONS

When using electrical appliances, basic safety precautions should always be followed, including the following:
HOUSEHOLD USE ONLY

814100001

WARNING

1. Read all instructions before use.
2. This appliance has a polarized plug (one blade is wider than the other). To reduce the risk of electric shock, this plug is intended to fit in a polarized outlet only one way. If the plug does not fit fully in the outlet, reverse the plug. If it still does not fit, contact a qualified electrician. Do not attempt to defeat this safety feature. Unplug or disconnect the appliance from the power supply before servicing.
3. DO NOT operate any appliance with a damaged cord or plug. Discard appliance or call a Service center for examination and/or repair. DO NOT run cord under carpeting. DO NOT cover cord with throw rugs, runners, or similar coverings. DO NOT route cord under furniture or appliances. Keep cord away from high traffic areas and place cord where it will not be tripped over.
4. If the power cord is damaged, it must be replaced by the manufacturer, its service agent, or similarly qualified persons in order to avoid a hazard.
5. This appliance is not intended for use by anyone (including children) with reduced physical, sensory or mental capabilities, or lack of experience and knowledge, unless they have been given supervision or instruction concerning use of the appliance by a person responsible for their safety.
6. Children should be supervised to ensure that they DO NOT play with the appliance.
7. Cleaning and user maintenance shall not be made by children without supervision.
8. Prior to cleaning or other maintenance, the appliance must be unplugged from the electrical outlet.
9. DO NOT handle plug or appliance with wet hands.
10. DO NOT use without filter in place.
11. Only use Shark® branded filters and accessories.
12. DO NOT damage the power cord:
 - a. DO NOT pull or carry appliance by the cord or use the cord as a handle.
 - b. DO NOT unplug by pulling on cord. Grasp the plug, not the cord.
 - c. DO NOT stand the appliance on the power cord, close a door on the cord, pull the cord around sharp corners, or leave the cord near heated surfaces.
13. DO NOT use with any opening blocked; keep free of dust, lint, hair, and anything that may reduce airflow.
14. DO NOT use if airflow is restricted. If the air paths become blocked, turn the appliance off and unplug from electrical outlet. Remove all obstructions before you plug in and turn on the unit again.
15. DO NOT use if appliance is not working as it should, or has been dropped, damaged, left outdoors, or dropped into water.
16. DO NOT place appliance on unstable surfaces such as chairs or other furniture.
17. DO NOT use in the following areas:
 - a. Wet or damp surfaces
 - b. Outdoor areas
 - c. Spaces that are enclosed and may contain explosive or toxic fumes or vapors (lighter fluid, gasoline, kerosene, paint, paint thinners, moth proofing substances, or flammable dust)

18. Turn off all controls before unplugging the appliance.
19. Unplug from electrical outlet when not in use and before any maintenance or cleaning.
20. Hand wash with soapy water only. Washing with cleaning chemicals could damage the unit.
21. Make sure filter is in place after routine maintenance.
22. Not suitable for use with solid-state speed controls.

IMPORTANT INSTRUCTIONS

23. This heater is hot when in use. To avoid burns, do not let bare skin touch hot surfaces. If provided, use handles when moving this heater. Keep combustible materials, such as furniture, pillows, bedding, papers, clothes, and curtains at least 3 feet from the front of the heater and keep them away from the sides and rear.
24. Extreme caution is necessary when any heater is used by or near children or invalids and whenever the heater is left operating and unattended.
25. This heater is not intended for use in bathrooms, laundry areas and similar high moisture locations. Never locate heater where it may fall into a bathtub or other water container.
26. Do not insert or allow foreign objects to enter any ventilation or exhaust opening as this may cause an electric shock or fire or damage the heater.
27. To prevent a possible fire, do not block air intakes or exhaust in any manner. Do not use on soft surfaces, like a bed, where openings may become blocked.
28. A heater has hot and arcing or sparking parts inside. Do not use it in areas where gasoline, paint, or flammable liquids are used or stored.
29. Use this heater only as described in this manual. Any other use not recommended by the manufacturer may cause fire, electric shock, or injury to persons.
30. Always plug heaters directly into a wall outlet/receptacle. Never use with an extension cord or relocatable power tap (outlet/power strip).

WARNING: LITHIUM BATTERY

31. Dispose of coin cell batteries according to local regulations. Keep batteries away from children at all times. Even used batteries can cause injury. Chemical Burn Hazard. Keep batteries away from children. This product contains a lithium button/coin cell battery. If a new or used lithium button/coin cell battery is swallowed or enters the body, it can cause severe internal burns and can lead to death in as little as 2 hours. After changing batteries, always completely close and secure the battery compartment. If the battery compartment does not close securely, stop using the product, remove the battery, and keep it away from children. If you think battery might have been swallowed or placed inside any part of the body, seek immediate medical attention.

SAVE THESE INSTRUCTIONS

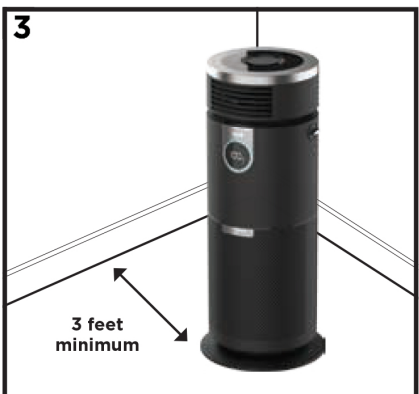
SETTING UP YOUR AIR PURIFIER



1. You must set up the filter before operating. First, remove the filter cover and filter from the back of the air purifier. Then, take the filter out of its sealed plastic packaging.



2. Slide filter back into the air purifier and replace the filter cover. Insert the tabs on the bottom of the cover into the slots. Press the top and sides of the cover until it clicks into place.



3. Set up the air purifier up at least 3 feet (0.9m) from the wall and any furnishings. Plug it in and power on.

NOTE: Accessories may vary depending on the model. Illustrations may differ from actual product. We are constantly striving to improve our products; therefore the specifications contained herein are subject to change without notice.

CHANGING MODES


PURIFIED FAN

1. For purified **FAN** mode, make sure the dial is pointing to the Fan icon. In **FAN** mode, purified air will be directed out of the front.



Adjust the fan speed.

PURIFIED HEAT

2. To activate **HEAT** mode, make sure the dial is pointing to the Heat icon. Then press the  icon on the remote. Heated, purified air will be directed out of the front.



Set target temp or activate HI mode. You may also adjust the fan speed in this mode.

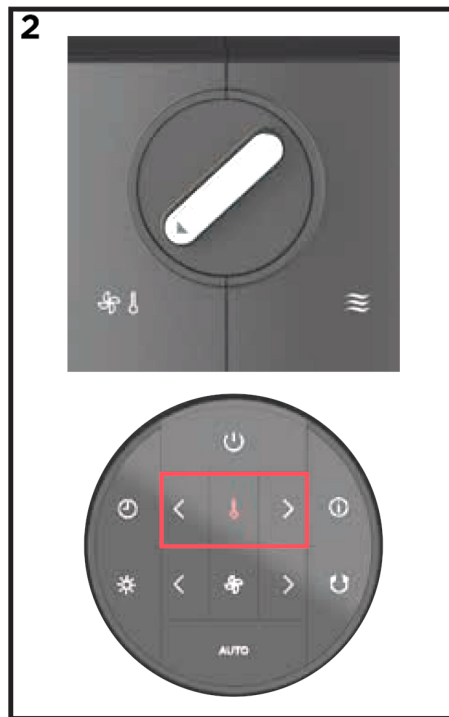
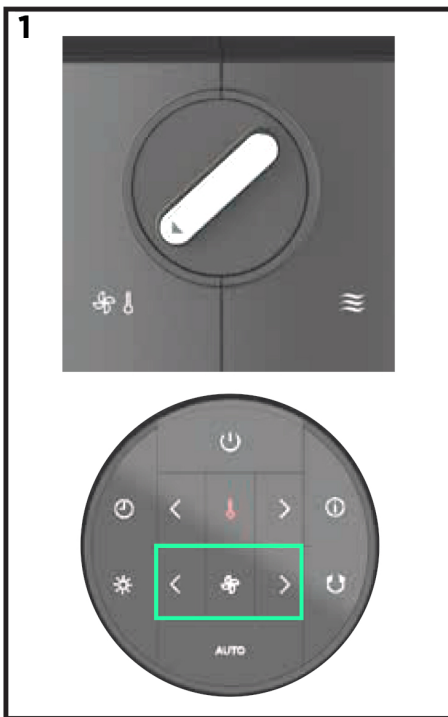
PURIFIED AIR

3. For **PURIFIED AIR** mode, make sure the dial is pointing to the Purifier icon. Purified air will be diffused out of the back.

While the air will be purified in all modes, this mode boosts cleaning power without the breeze of a fan.



AUTO mode – automatically adjusts the purification power based on the air quality. Or manually adjust the fan speed using the fan arrows.



Illustrations may differ from actual product without notice.

REFURBISHED PRODUCT LIMITED NINETY DAYS WARRANTY

The **Refurbished Product Service Center** offers the following WARRANTY to the ORIGINAL purchaser of a product which we have refurbished.

This product that has been refurbished is warranted against any electronic or mechanical defects for a period of NINETY DAYS from the date of the original purchase by the consumer. Since this unit was sold as a refurbished item, the warranty does not apply to any cosmetic appearance items such as scratches. Should a defect occur, the **Refurbished Product Service Center** will repair or, at its option, replace defective unit/parts with new or rebuilt materials without charge for either parts or labor. Replacement unit/parts will be warranted for the remaining portion of the original warranty period. This warranty does not cover installation or damage from accident, misuse, abuse, improper wiring, incorrect voltage, operating the unit against the instructions in the owner's manual or any product which has been opened, altered, or tampered with.

This warranty does not cover costs for removal and or installation of the unit for repair. Under no circumstances shall the service center be liable for any special, incidental or consequential damages or for any other expenses incurred by reason of use or sale of this product. This warranty is in lieu of any other warranties expressed or implied warranty of merchantability of fitness for particular use or otherwise.

This warranty gives the consumer specific legal rights and they may also have other rights which vary from State to State. Some States do not follow the exclusion or limitation of incidental or consequential damages, hence the above exclusion and limitations may not apply.

Refurbished Product Service Center
13225 Marquardt Avenue Santa Fe Springs, CA 90670.

WARRANTY REPAIR INFORMATION

If you need service on your unit and this product requires repair during the 90 days warranty period; please go to www.ConsumerServiceRefurbish.com or call the **Refurbished Product Service Center** at 562-946-3531 to obtain the required return authorization (RA) number. Pack the unit properly (the original carton is ideal for this purpose) along with a copy of your purchase receipt and a letter describing the problem. Send the unit freight prepaid and insured to:

Refurbished Product Service Center,
Att: Customer Service Department 13225 Marquardt Avenue Santa Fe Springs, CA 90670
Your unit will be promptly repaired and returned to you.
We will refuse to accept delivery of the returned unit unless the assigned RA number appears on the outside of the shipping carton.

Owner's Information
(Keep for your permanent records)

NAME: _____
 ADDRESS: _____
 CITY: _____ STATE: _____ ZIP CODE: _____
 PHONE: _____ E-MAIL: _____
 MODEL: _____ SERIAL NO.: _____

PRINTED IN MEXICO / SC: 03-31-2023
 SHNMDL:HC452
 OBPN:HC452_W5_QSG_PRINT_MP_MV1_220601

