

## IMPORTANT SAFEGUARDS

When using electrical appliances, basic safety precautions should always be followed, including the following:

1. **READ ALL INSTRUCTIONS.**
2. For household use only.
3. Do not use distilled water.
4. Scalding may occur if the handle is opened during the brewing process.
5. Do not touch hot surfaces. Use handles or knobs.
6. To protect against fire, electric shock, and injury to persons, do not immerse appliance, cord, or plugs in water or other liquid.
7. This appliance is not intended for use by persons (including children) with reduced physical, sensory, or mental capabilities or lack of experience and knowledge, unless they have been given supervision or instruction concerning use of the appliance by a person responsible for their safety. Close supervision is necessary when any appliance is used by or near children.
8. Unplug from outlet when not in use and before cleaning. Allow to cool before putting on or taking off parts and before cleaning the appliance.
9. Do not operate any appliance with a damaged cord or plug or after the appliance malfunctions or has been damaged in any manner.
10. The use of accessory attachments not authorized by the appliance manufacturer may result in fire, electric shock, or injury to persons.
11. Do not use outdoors.
12. Do not let cord hang over edge of table or counter or touch hot surfaces.
13. Do not place on or near a hot gas or electric burner or in a heated oven.
14. Always attach plug to appliance first (if not permanently attached), then plug cord into the wall outlet. To disconnect, turn any control to "off", then remove plug from wall outlet.
15. Do not use appliance for other than intended use.
16. Use brewer in upright position only. Allow brewer to cool (90 minutes) prior to turning it in any position other than upright.
17. Do not immerse brewer in water.
18. Only use K-Cup® pods intended for this appliance. If the pod does not fit, do not force it into the appliance.
19. Avoid spilling any liquid substance on powered connectors.

1. **WARNING:** Keep all plastic bags away from children.
2. **CAUTION:** Keurig® recommends using only Keurig® My K-Cup Universal Reusable Coffee Filters and Keurig® approved K-Cup® pods in this appliance. If the pod does not fit, do not force the pod into the appliance. The use of non-Keurig® pods or accessories may cause brewer malfunction or injury.
3. **WARNING:** Used K-Cup® pods should be removed from the pod holder, and the drip tray and water reservoir (if applicable) should be rinsed clean regularly or as part of the daily cleaning routine.
4. **WARNING:** There is extremely hot water under pressure in the K-Cup® pod holder during the brew process. To avoid risk of injury, do not lift the handle or otherwise open the handle during the brew process.
5. **CAUTION:** There are sharp needles that puncture the K-Cup® pod, one above the K-Cup® pod holder and the other in the bottom of the K-Cup® pod holder. To avoid risk of injury, be aware of the needle locations.
6. **POWER CORD INSTRUCTIONS:**
  - a. A short power-supply cord is provided to reduce risks resulting from becoming entangled in or tripping over a longer cord.
  - b. Longer detachable power-supply cords or extension cords are available and may be used if care is exercised in their use.
  - c. If a long detachable power-supply cord or extension cord is used:
    - i. The marked electrical rating of the detachable power-supply cord or extension cord should be at least as great as the electrical rating of the appliance.
    - ii. If the appliance is of the grounded type, the extension cord should be a grounding type 3-wire cord.
    - iii. The longer cord should be arranged so that it will not drape over the countertop or tabletop where it can be pulled on by children or tripped over.
7. This appliance has a polarized plug (one blade is wider than the other). To reduce the risk of electric shock, this plug is intended to fit into a polarized outlet only one way. If the plug does not fit fully into the outlet, reverse the plug. If it still does not fit, contact a qualified electrician. Do not attempt to modify the plug in any way.
8. **CAUTION: HOT COCOA/OTHER NON-COFFEE PODS:** Immediately after using a hot cocoa/other non-coffee pod, run a hot water brew cycle without a pod to avoid the possibility of clogging the exit needle. DO NOT assume the next user will do this.

## SAVE THESE INSTRUCTIONS

# KEURIG

## K-Supreme Plus™

SINGLE SERVE COFFEE MAKER

QUICK START GUIDE

"Recipe book is not included"

# Let's get brewing.

814100092

## Button Overview

### Preference Button

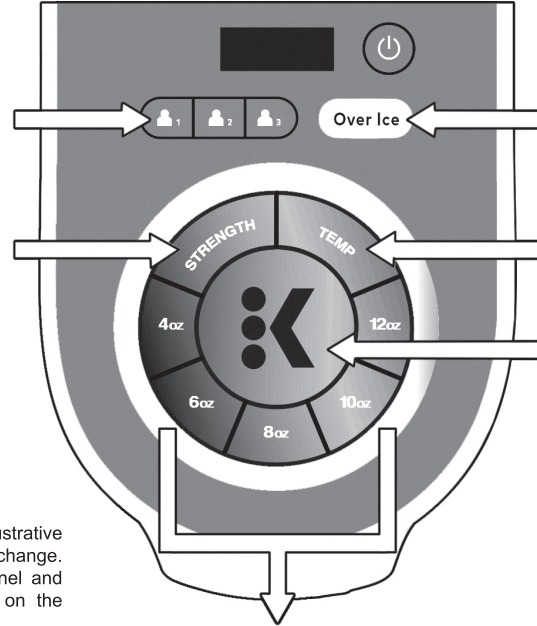
Save up to **3** personalized brew preferences

Press the **STRENGTH** Button for bolder coffee

Brew your favorite beverages **Over Ice**

Press the **TEMP** Button for hotter coffee

**BREW BUTTON**



**NOTE:** The image shown here is for illustrative purposes only and may be subject to change. The actual descriptions of control panel and their locations may vary, depending on the model.

### BREW SIZES

Choose **4, 6, 8, 10, or 12oz**

## Before You Brew



### 1 Plug & Place

Remove packing tape from brewer. Plug into a grounded outlet.

Place a large mug (10oz minimum) on the drip tray.



### 2 Rinse & Fill

Remove the water reservoir lid, then lift the reservoir straight up to remove it. If you have a Keurig® Water Filter, install it now. Refer to your Water Filter Starter Kit for instructions.

Rinse reservoir with fresh water and fill to the **MAX FILL** line.

Replace water reservoir, making sure the tank is seated properly in the base. Replace lid.

**NOTE:** Do not use distilled water.

**NOTE:** The image shown here is for illustrative purposes only and may be subject to change. The actual descriptions of control panel and their locations may vary, depending on the model.

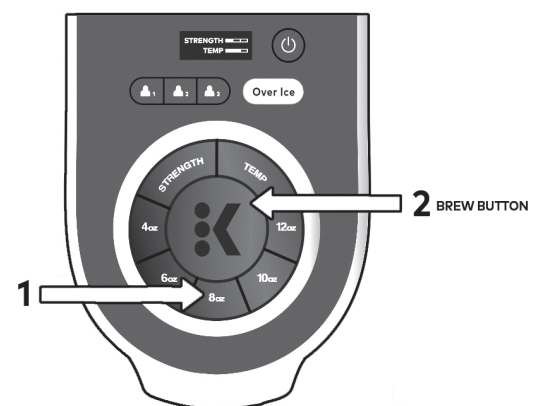
**NOTE:** Mug and pods not included

**NOTE:** Reusable Coffee Filter not included



### 3 Lift & Lower

Lift and lower the handle. **Do not insert a K-Cup® pod.** The brewer will power on automatically.



### 4 Cleansing Brew

The 5 cup sizes will blink. Press the **8oz** button, then press the blinking **BREW** button to start a cleansing brew. Pour the hot water into the sink.

**Do not remove the water reservoir once the brew button has been pressed until the brew has completed.**

**The one-time setup process is now complete and you are ready to brew!**





# Brew Your First Cup

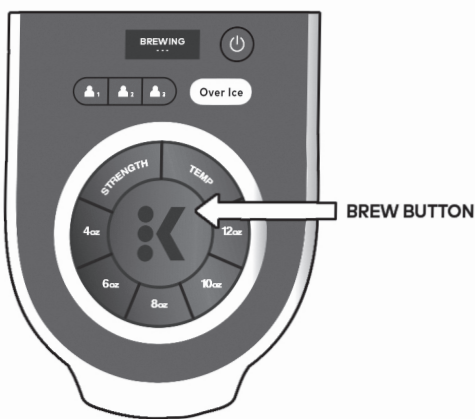


NOTE: Mug and pod not included

## 5 Place Mug & Pod

Place a mug on the drip tray. If using a travel mug, remove the drip tray and place the mug on the drip tray base. Lift the handle and place a K-Cup® pod in the K-Cup® pod holder. Lower the handle completely to close the lid.

Do not remove the foil lid on the K-Cup® pod.



## 6 Brew & Enjoy!

The 5 brew size buttons will blink. Select your brew size, then press the blinking **BREW** button. The brew button will remain illuminated while brewing. Brewing is complete when the buttons are no longer illuminated. Lift the handle and dispose of the K-Cup® pod.

**CAUTION:** While brewing, there is extremely hot water in the K-Cup® pod holder. To avoid injury, do not lift the handle during the brewing process.

For bolder coffee, press the **STRENGTH** button until you have reached the desired level of strength, then select brew size, followed by the **BREW** button.

STRENGTH

For hotter coffee, press the **TEMP** button until you have reached the desired level of heat, then select brew size, followed by the **BREW** button.

TEMP

For iced beverages, fill a large plastic tumbler with ice. Insert any K-Cup® pod, then press the **OVER ICE** button, followed by the **BREW** button.

**NOTE:** Choose a tumbler large enough to accommodate both the ice and dispensed liquid to prevent overflow. Do not use a glass cup.

To set a preference, use the three user profile buttons. Once the desired brew size, strength, and temperature settings are chosen, press and hold one of the user profile buttons to save your settings.

Once saved, you can press the user profile button, followed by the **BREW** button.



For best results on cocoa beverages, use the lowest strength and highest temperature settings.

### Brewer Features

**MULTISTREAM TECHNOLOGY™:** Extracts more flavor and aroma\* in every brew.

\*vs. Keurig® K-Classic® brewer with The Original Donut Shop® Coffee K-Cup® pod

**FAST & FRESH-BREWED:** Coffee made in minutes.

**BACK-TO-BACK BREWING:** Immediately brew a second cup -no need to wait for reheating.

**TRAVEL MUG FRIENDLY:** Accommodates travel mugs up to 7" tall.

**MAINTENANCE ALERT:** Reminds you to descale after every 250 brews.

**AUTO OFF:** Automatically turns your brewer off five minutes after the last brew for energy savings.

**HIGH ALTITUDE:** To ensure your coffee maker works properly at higher altitudes (5,000 feet), please enable the High Altitude Brewing Mode on your coffee maker.

1. Begin with the brewer plugged in and powered off.
2. Press and hold the **BREW** button and **8 oz** button for three seconds. The **12 oz** button will illuminate to confirm that the High Altitude Brewing Mode has been enabled.

3. High Altitude Mode will remain enabled until steps 1-2 are repeated and the **12 oz** button turns off to confirm that the High Altitude Brewing Mode is disabled.

**ATTENTION!**

This brewer is only compatible with the newly designed Keurig® My K-Cup® Universe! Reusable Coffee Filter. Do not attempt to use any other reusable filter or previous versions of Keurig® My K-Cup® Universal Reusable Coffee Filter; may cause damage to brewer.

NOTE: Reusable Coffee Filter not included

## Caring for Your Brewer

For great-tasting coffee, keep your brewer running at peak performance by following the recommended maintenance schedule:

Frequency	Product	Benefit
Weekly	*Keurig® Rinse Pods	A simple, fast, and convenient way to reduce flavor carryover between brews.
Every two months	Keurig® Water Filters	Keep your water fresh and clean for a great-tasting cup of coffee every time.
Every three months or when the Descale notification turns on*	*Keurig® Descaling Solution	Remove calcium deposits, or scale, that can build up inside a brewer over time; this can help extend the life of your brewer (when used regularly).

\*To turn off Descale notification, follow the full descaling procedure as outlined in this guide.

If the brewer has been in storage or hasn't been used in days, run a cleansing brew before brewing your beverage.

Periodically **hand-wash** the water reservoir and lid and drip tray with warm, soapy water and rinse clean. Do not use any vinegar-based cleaning products to clean the outside of your brewer.

**CAUTION:** Parts are not dishwasher safe. Parts are not dishwasher safe.

**NOTE:** Do not dry the inside of the water reservoir with a cloth, as lint may remain.

**NOTE:** Keurig® Rinse Pods and Keurig® Descaling Solution sold separately

### KEURIG® WATER FILTER INSTALLATION:

**STEP 1:** Soak the charcoal filter cartridge for five minutes in fresh water. Rinse the cartridge for 60 seconds once complete.

**STEP 2:** On the bottom of the handle, press in the tabs on both sides of the base at the same time and pull down to separate. Insert the filter cartridge.

**STEP 3:** Reattach the bottom of the Water Filter Handle.

**STEP 4:** Insert the handle into your empty, removable Water Reservoir. Be sure to push firmly all the way down to correctly attach the Water Filter to the inside of your removable Water Reservoir.

## Descaling Procedure

**You will need:** a large ceramic mug, fresh water, Keurig® Descaling Solution, and access to a sink. Do not use a paper cup. Ensure that there is no beverage pod in the K-Cup® pod holder. The descaling procedure takes approximately 20 minutes.

### STEP 1: Prepare the Brewer

Pour the entire bottle of Keurig® Descal Solution into an empty water reservoir. Then, fill the empty bottle with water and pour into the water reservoir.

**Do not insert a K-Cup® pod.** Place a large mug on the drip tray.

### STEP 2: Descal the Brewer

To activate Descale Mode, begin with the brewer plugged in and powered off, then press and hold the **8oz** and **12oz** buttons together for 3 seconds. When flashing, press the **brew button** to start the descaling process. Once the brew is complete, pour the hot liquid into the sink. Repeat this step until the **DESCALE** notification turns off. The brewer has now exited Descale Mode and will be ready for use!

### STEP 3: Fresh Water Rinse

Empty and rinse the water reservoir and refill to the **MAX** fill line with fresh water. When flashing, press the **BREW** button to start the rinsing process. Once the brew is complete, pour the hot liquid into the sink. Repeat this step until the **DESCALE** notification turns off. The brewer has now exited Descale Mode and will be ready for use!

**NOTE:** The cleaning action of Keurig® Descaling Solution may result in a "foam" dispensed from the brewer. This is natural, as the solution is reacting with the scale inside. For a brewer that is heavily scaled, the brewer may not fill properly after the descaler is added. If this occurs, you may see only a small or no output dispensed, followed by the sound of air blowing out. If this occurs:

- Turn off and unplug the brewer.
- If there is Keurig® Descaling Solution in the water reservoir, discard the contents, rinse the water reservoir thoroughly and refill with water.
- Plug the brewer back in, power on, and repeat the Step 3 Fresh Water Rinse cycle. The brewer should begin to function normally as the solution is rinsed out and the scale is removed. If problem persists, allow brewer to sit unplugged for at least 30 minutes before continuing with the rinse.

### NOTE:

In order to ensure the highest possible standard for refurbished items, all units are thoroughly inspected as part of the process. For this item, water may be used during the refurbishing process and so; you may notice some condensation in the water reservoir. It is recommended to rinse the water reservoir with fresh water prior to its first use.

### REFURBISHED PRODUCT LIMITED THIRTY DAY WARRANTY

The **Refurbished Product Service Center** offers the following WARRANTY to the ORIGINAL purchaser of a product which we have refurbished.

This product that has been refurbished is warranted against any electronic or mechanical defects for a period of THIRTY DAYS from the date of the original purchase by the consumer. Since this unit was sold as a refurbished item, the warranty does not apply to any cosmetic appearance items such as scratches. Should a defect occur, the **Refurbished Product Service Center** will repair or, at its option, replace defective unit/parts with new or rebuilt materials without charge for either parts or labor. Replacement unit/parts will be warranted for the remaining portion of the original warranty period.

This warranty does not cover installation or damage from accident, misuse, abuse, improper wiring, incorrect voltage, operating the unit against the instructions in the owner's manual or any product which has been opened, altered, or tampered with.

This warranty does not cover costs for removal and or installation of the unit for repair. Under no circumstances shall the service center be liable for any special, incidental or consequential damages or for any other expenses incurred by reason of use or sale of this product. This warranty is in lieu of any other warranties expressed or implied warranty of merchantability of fitness for particular use or otherwise.

This warranty gives the consumer specific legal rights and they may also have other rights which vary from State to State. Some States do not follow the exclusion or limitation of incidental or consequential damages, hence the above exclusion and limitations may not apply.

**Refurbished Product Service Center**  
13225 Marquardt Avenue Santa Fe Springs, CA 90670

### WARRANTY REPAIR INFORMATION

If you need service on your unit during the 30 day warranty period; please go to [www.ConsumerServiceRefurbish.com](http://www.ConsumerServiceRefurbish.com) or call the Refurbished Product Service Center at 562-946-3531 to obtain the required claim number. Once you obtain your claim number, pack the unit properly (the original carton is ideal for this purpose) along with a copy of your purchase receipt. Send the unit freight prepaid and insured to:

**Refurbished Product Service Center,**  
Att: Customer Service Department 13225 Marquardt Avenue  
Santa Fe Springs, CA 90670

Your unit will be promptly exchanged and returned to you. We will refuse to accept delivery of the returned unit unless the assigned claim number appears on the outside of the shipping carton.

**Owner's Information**  
(Keep for your permanent records)

NAME: \_\_\_\_\_

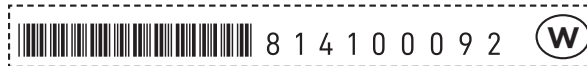
ADDRESS: \_\_\_\_\_

CITY: \_\_\_\_\_ STATE: \_\_\_\_\_

ZIP CODE: \_\_\_\_\_ PHONE: \_\_\_\_\_

E-MAIL: \_\_\_\_\_

MODEL: \_\_\_\_\_ SERIAL NO.: \_\_\_\_\_



PRINTED IN MEXICO Elbrd: M.C. OBPB: AW000000522 REV B  
SC: 07-05-2023\_TAB MODEL: KSUPREPLUS\_B