



USER MANUAL
Portable PD
Rated voltage: 115V
Frequency: 60Hz

Before using this product, please read this manual carefully and keep it for future reference.
 The design and specifications are subject to change without prior notice for product improvement for product improvement. contact a service center.

CAUTION

- The air conditioner is not intended for use by young children or infirm persons without supervision.
- Young children should be supervised to ensure that they do not play with the air conditioner.
- If the power cord needs to be replaced, please contact a service center.
- Electrical installation must be performed in accordance to national regulation standards by qualified personnel only.

Please read through these instructions before you start the installation process. Improper installation can cause damage to the unit, your personal property, and also poses a personal safety hazard.

WARNINGS (for using R32 refrigerant only)

- Do not use any means to accelerate the defrosting process or to clean the unit, other than those recommended by the manufacturer.
- Do not use or store the appliance in spaces with potential ignition sources (for example: open flames, an operating gas appliance or an operating electric heater).
- Do not pierce or burn refrigerant tubing. Be aware that refrigerants may not contain an odor.
- Keep ventilation openings clear of obstruction.
- Store the appliance in a way that will prevent mechanical damage from occurring.
- Store the appliance in a well-ventilated area where the room size corresponds to the room area as specified for operation.
- Any person who is involved with working on or breaking into a refrigerant circuit should hold a current valid certificate from an industry-accredited assessment authority, which authorizes their competence to handle refrigerants safely in accordance with an industry recognized assessment specification.
- Servicing shall only be performed as recommended by the equipment manufacturer. Maintenance and repair requiring the assistance of other skilled personnel shall be carried out under the supervision of the person competent in the use of flammable refrigerants.
- Flammable refrigerant (R32) is used within the air conditioner. please follow the instruction carefully to avoid any hazard. For specific information on the type of gas and the amount, please refer to the relevant label on the unit itself.
- When maintaining or disposing of the air conditioner, the refrigerant (R32) shall be recovered properly, do not discharge to air directly.

To prevent injury to the user or other people and property damage, the instructions shown here must be followed. Incorrect operation due to ignoring of instructions may cause harm or damage. The level of risk is shown by the following indications. Please read through these instructions before you start the installation process. Improper installation can cause damage to the unit, your personal property, and also poses a personal safety hazard.

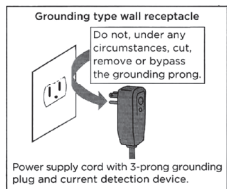
- Installation must be performed according to the installation instructions. Improper installation can cause water leakage, electrical shock, or fire.
- Use only the included accessories and parts, and specified tools for the installation. Using non-standard parts can cause water leakage, electrical shock, fire, and injury or property damage.
- Make sure that the outlet you are using is grounded and has the appropriate voltage. The power cord is equipped with a three-prong grounding plug to protect against shock. Voltage information can be found on the side of the unit, behind the grille.
- Install the unit on a flat, sturdy surface. Failure to do so could result in damage or excessive noise and vibration.
- The unit must be kept free from obstruction to ensure proper functioning and to mitigate safety hazards.
- DO NOT modify the length of the power cord or use an extension cord to power the unit. DO NOT share a single outlet with other electrical appliances. Improper power supply can cause fire or electrical shock.
- DO NOT install your air conditioner in a wet room such as a bathroom or laundry room. Exposure to water can cause electrical components to short circuit.
- DO NOT install the unit in a location that may be exposed to combustible gas, as this could cause fire.
- The unit has wheels to facilitate moving. Do not attempt to roll the unit across thick carpet or to roll over objects, as this could cause the unit to tip over.
- DO NOT attempt to operate a unit that has been dropped or damaged.
- DO NOT allow children to play with the air conditioner. Children must be supervised around the unit at all times.
- If the air conditioner is knocked over during use, turn off the unit and unplug it from the main power supply immediately. Visually inspect the unit to ensure there is no damage. If you suspect the unit has been damaged, contact a service center.
- In a thunderstorm, the unit should be turned off to avoid damage to the machine due to lightning.

- This appliance is not intended for use by persons (including children) with reduced physical, sensory or mental capabilities or lack of experience and knowledge, unless they have been given supervision or instruction concerning use of the appliance by a person responsible for their safety.
- If the power cord is damaged, it must be replaced by the manufacturer, its service agent or similarly qualified persons in order to avoid a hazard.
- Prior to cleaning or other maintenance, the appliance must be disconnected from the supply mains.
- Do not install the appliance in a location that may be exposed to combustible gas. If combustible gas accumulates around the unit, it may cause fire.
- Do not run the power cord under carpeting. Do not cover cord with throw rugs, runners, or similar coverings. Do not route cord under furniture or appliances. Arrange cord away from traffic area and where it will not be tripped over.
- To reduce the risk of fire or electric shock, do not use this air conditioner with any solid-state speed control device.
- The appliance shall be installed in accordance with national wiring regulations.
- Contact a service center for repair or maintenance of this unit.
- Contact the authorized installer for installation of this unit.
- When there are significant differences between features or operation implied by the remote control illustration and the actual functions described in the USER MANUAL, the descriptions in the USER MANUAL shall prevail.
- Do not mix old and new batteries.
- Do not mix alkaline, standard (carbon-zinc), or rechargeable (ni-cad, ni-mh, etc.) batteries.



Caution: Risk of fire/ flammable materials
 (Required for R32/R290 units only)

Operation of Current Device



The power supply cord contains a measurement current device that senses damage to the power cord. Test your power supply cord as follows:

1. Plug in the air conditioner.
2. The power supply cord will have TWO buttons on the plug head. Press the TEST button. You will notice a click as the RESET button pops out.
3. Press the RESET Button. You will notice a click as the button engages.
4. The power supply cord is now supplying electricity to the unit. (On some products this is also indicated by a light on the plug head.)

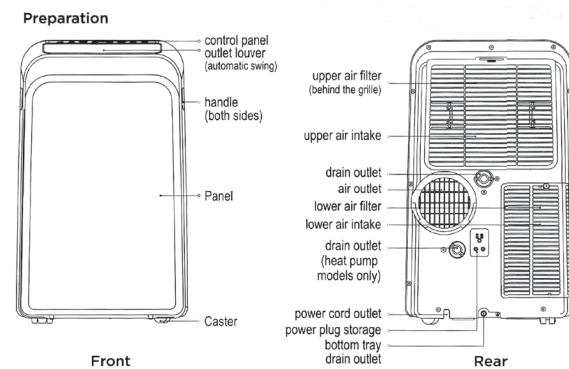
NOTICE

The power supply cord with this air conditioner contains a current detection device designed to reduce the risk of fire.
 In the event that the power supply cord is damaged, it can not be repaired. It must be replaced with a cord from the manufacturer.

NOTICE

- Do not use this device to turn the unit on or off.
- Always make sure the RESET button is pushed in for correct operation.
- The power supply must be replaced if it fails to reset when either the TEST button is pushed, or it can not be reset. Please contact a service center.

Unit Specifications and Features



Unit Operating Temperature Range:

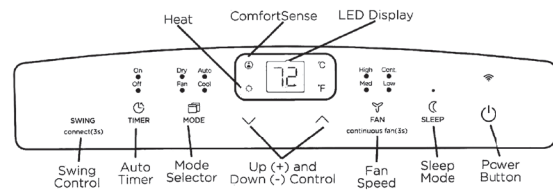
Mode	Temperature Range
COOL	17°C - 35°C (62°F - 95°F)
Dry	13°C - 35°C (55°F - 95°F)
Heat (heat pump models only)	5-30°C (41-86°F)

EXHAUST HOSE INSTALLATION:

The exhaust hose and adaptor must be installed or removed in accordance with the usage mode. For COOL or AUTO mode, exhaust hose must be installed. For FAN or DEHUMIDIFY exhaust hose must be removed.

Operating Instructions

Control Panel Features



The actual descriptions of control panel and their locations may vary depending on the model.

Swing Button

Used to initiate the Auto Swing feature. When the operation is ON, pressing the SWING button can stop the lower at the desired angle.

Wireless Button

Also used to initiate the Wireless connection mode. To initiate the Wireless connection mode, power on the air conditioner then press the SWING button for 3 seconds. The LED DISPLAY will show 'AP' to indicate the unit is in Wireless connection mode. Refer to the app connection instructions to finish the connection process. If the connection is successful, the unit will exit Wireless connection mode and illuminate the Wireless LED. If the connection fails, the unit will exit Wireless connection mode automatically after 8 minutes and the Wireless LED does not illuminate. Note: The Wireless connection process must be completed within 8 minutes after powering the air conditioner on.

Timer Button

Used to initiate the AUTO ON start time and AUTO OFF stop time program. The timer on or off light will illuminate depending on the selected setting.

Mode Button

Selects the desired operating mode. Each time you press the button, a mode is selected in a sequence that goes from AUTO, COOL, DRY, FAN and HEAT. The mode light illuminates and indicates the selected mode. Note the HEAT mode light is located next to the LED Display.

Up (+) and Down (-) Buttons

Used to increase/decrease temperature settings. temperature settings in 1°C/1°F increments in a range of 17°C/62°F to 30°C/86°F or the TIMER setting in a range of 0 - 24hrs. To change between °F or °C, simultaneously press and hold the Up and Down buttons for 3 seconds.

Operating Instructions

HEAT operation (Only for heat & cool models)

- Press the "MODE" button until the "HEAT" indicator light comes on.
- Press the Up (+) or Down (-) buttons to select your desired room temperature. The temperature can be set within a range of 17°C-30°C/62°F-86°F.
- Press the "FAN SPEED" button to choose the fan speed. For some models, the fan speed can not be adjusted under HEAT mode.

COOL operation

- Press the "MODE" button until the "COOL" indicator light comes on.
- Press the Up (+) or Down (-) buttons to select your desired room temperature. The temperature can be set within a range of 17°C-30°C/62°F-86°F.
- Press the "FAN SPEED" button to choose the fan speed.

DRY operation

- Press the "MODE" button until the "DRY" indicator light comes on.
- While in this mode, you cannot select a fan speed or adjust the temperature. The fan motor operates at LOW speed.
- Keep windows and doors closed for the best dehumidifying effect.

AUTO operation

- When you set the air conditioner to AUTO mode, it will automatically select cooling, heating (cooling only models excluded), or fan only operation depending on what temperature you have selected and the current room temperature.
- The air conditioner will automatically control the room temperature based on the desired temperature setpoint.
- Under AUTO mode, you cannot select the fan speed.

Fan

Controls the fan speed. Press to control the fan speed in four steps - LOW, MED, HIGH and AUTO. The selected fan speed light (except AUTO) will illuminate. When AUTO is selected, no lights will illuminate.

NOTICE

Applicable to models with the Constant Fan feature. In COOL or DRY mode, press the button for 3 seconds to turn on or off the constant fan function. When the function is turned on, the constant fan light will illuminate, identifying the fan continuous run for cooling. When the function is turned off, the constant fan light will go out, identifying the fan cycle run with compressor stop.

Sleep Button

Used to initiate the SLEEP operation.

Power Button

Power switch on/off.

LED display

Shows the set temperature in °C or °F and the Auto-timer settings. While on DRY and FAN modes, it shows the room temperature.

Shows Error codes and protection code:

- E1** - Room temperature sensor error.
- E2** - Evaporator temperature sensor error.
- E3** - Condenser temperature sensor error (select models).
- E4** - Display panel communication error.
- P1** - Bottom tray is full -- Connect the drain hose and drain the collected water away. If protection code repeats, contact a service center.

NOTICE

When one of the above malfunctions occurs, turn off the unit and check for any obstructions. Restart the Unit. If the malfunction persists, turn off the unit and unplug the power cord. Contact a service center.

FAN operation

- Press the "MODE" button until the "FAN" indicator light comes on.
- Press the "FAN SPEED" button to choose the fan speed. The temperature cannot be adjusted.

TIMER: Auto Start/Stop Operation

- When the unit is on, pressing the Timer button will initiate the Auto stop program. The TIMER OFF indicator light illuminates. Press the Up or Down button to select the desired time. Press the TIMER button again within 5 seconds. The Auto start program is initiated and the TIMER ON indicator light illuminates. Press the up or down button to select the desired Auto start time.
- When the unit is off, press the Timer button to initiate the Auto start program. Pressing it again within five seconds will initiate the Auto stop program.
- Press or hold the Up or Down button to change the Auto time by 0.5 hour increments, up to 10 hours, then at 1 hour increments up to 24 hours. The control will count down the time remaining until start.
- The system will automatically revert back to display the previous temperature setting if there is no operation within 5 seconds.
- Turning the unit ON or OFF at any time or adjusting the timer setting to 0.0 will cancel the Auto Start/Stop program.
- Should a malfunction occur, the Auto Start/Stop timed program will be cancelled.

SLEEP operation

Pressing this button will increase (during cooling operation) or decrease (during heating operation) 1°C/1°F after 30 minutes. The temperature will again increase (cooling) or decrease (heating) by another 1°C/1°F after an additional 30 minutes. This new temperature will be

maintained for 7 hours before returning to the originally selected temperature. This ends the SLEEP mode and the unit will continue to operate as originally programmed.

NOTICE

The SLEEP operation feature is unavailable in FAN or DRY mode.

Other Features

COMFORTSENSE FEATURE

NOTICE

This feature can ONLY be activated from the remote control. The remote control serves as a remote thermostat allowing for the precise temperature control at its location which must be within 26 feet of the air conditioner.

To activate the ComfortSense feature, point the remote control towards the unit and press the ComfortSense button. The remote's display will show actual temperature at its location and must be within 26 feet of the air conditioner to work. The remote control will send this signal to the air conditioner, every 3 minutes until the ComfortSense button is pressed again. If the unit does not receive the ComfortSense signal during any 7 minutes interval, the unit will beep to indicate the ComfortSense mode has ended.

AUTO-RESTART

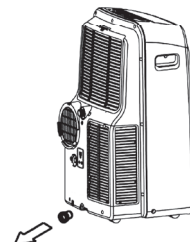
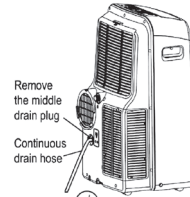
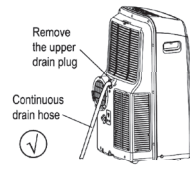
If the unit shuts off unexpectedly due to a power outage, it will restart with the previously set function automatically when the power resumes.

WAIT 3 MINUTES BEFORE RESUMING OPERATION

After the unit has stopped, it cannot be restarted until 3 minutes time has elapsed. This is to protect the unit. Operation will automatically resume after 3 minutes.

AIRFLOW DIRECTION ADJUSTMENT

For models with the Auto Swing feature, the lower can be adjusted automatically using the SWING button. When the Power is ON, the lower fully opens. Press the SWING button to initiate the Auto Swing feature. The lower will swing up and down automatically. Do not adjust the lower manually.



Water drainage

- During Dry mode, remove the upper drain plug from the back of the unit and install the drain connector (5/8" universal female adapter) with a 3/4" hose (not included). For models without the drain connector, attach the drain hose to the connector. Place the end of the hose in the drain area you're using.

- When the water level of the bottom tray reaches a predetermined level, the unit beeps 8 times. The digital display shows "P1." At this time the air conditioning/dehumidification process will immediately stop. However, the fan motor will continue to operate (this is normal). Carefully move the unit to a drain location, remove the bottom drain plug and let the water drain away. Reinstall the bottom drain plug and restart the machine until the "P1" symbol disappears. If the error repeats, call a service center.

NOTICE

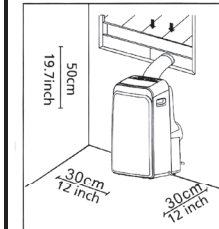
Be sure to reinstall the bottom drain plug firmly to prevent leakage before using the unit.

PRINTED IN MEXICO Elbrd: J.E.
 OBPB: 16120600A19758
 SC: 15-07-2021_TAB MODEL: MAP08SIWGR_B
 Add: MAPI0SIWBL / MAPI0HSIWBL.

804106482

Installation Instructions

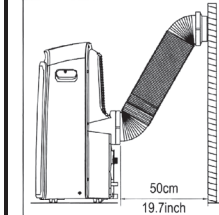
Choosing the Right Location



Your installation location should meet the following requirements:

- The unit must be near a window to install the exhaust hose and window kit to.
- Make sure that you install your unit on an even surface to minimize noise and vibration.
- The unit must be installed near a grounded plug, and the Collection Tray Drain (found on the back of the unit) must be accessible.
- The unit should be located at least 12" (30cm) from the nearest wall to ensure proper air conditioning. The horizontal louver blade should be at least 19.7" (50cm) away from obstacles.
- DO NOT cover the Intakes, Outlets or Remote Signal Receptor of the unit, as this could cause damage to the unit.

Recommend Installation



NOTICE

All the illustrations in the manual are for explanation purpose only. Your machine may be slightly different.

WARNING

- This air-conditioning unit is a hermetically sealed unit that contains fluorinated gasses. For specific information on the type of gas and the amount, please refer to the relevant label on the unit itself.

- Service, maintenance and repair of this unit must be performed by a certified technician.
- Product recycling must be done according to local regulations.

Tools Needed (Not Supplied)

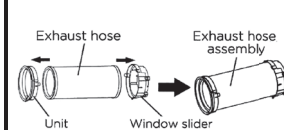
- Phillips screwdriver
- Tape measure or ruler
- Knife or scissors
- Saw (optional, to shorten window adaptor for narrow windows).

Accessories

Your Window Installation Kit fits windows 26.5"-48" (67.5-123cm) and can be shortened for smaller windows.

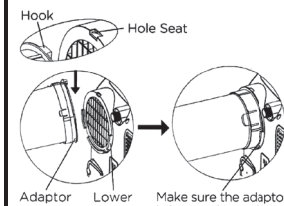
Description	Description
Unit adaptor	Foam seal C (Non-adhesive)
Exhaust hose	Security bracket and 2 screws
Window slider adaptor	Remote controller (For remote control models only)
Bolt or Screw	
Window slider set	Accessory type and quantity may vary depending on the model.
Foam seal A (adhesive)	

Window Installation Kit



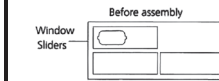
1. Preparing the exhaust hose assembly

Press the exhaust hose into the window slider adaptor and the unit adaptor until the plastic clips click onto the hose.



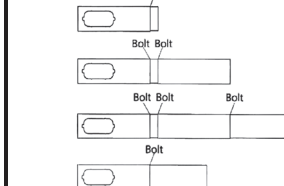
2. Install the exhaust hose assembly to the unit

Insert the unit adapter side of the exhaust hose assembly into the groove of the air outlet on the back of the unit. Align the hook of the unit adaptor with the seat on the air outlet and slide the assembly down until seated.



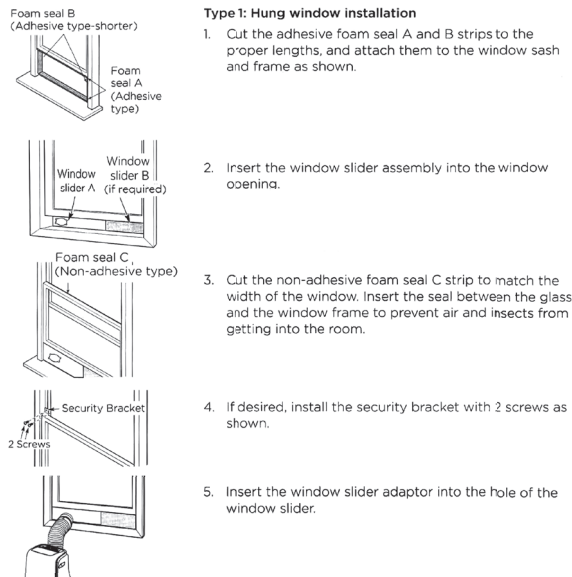
3. Preparing the Adjustable Window Slider

1. Depending on the size of your window, adjust the size of the window slider.
2. If the length of the window requires two or three window sliders, use the bolt or screw to fasten the window sliders once they are adjusted to the proper length.



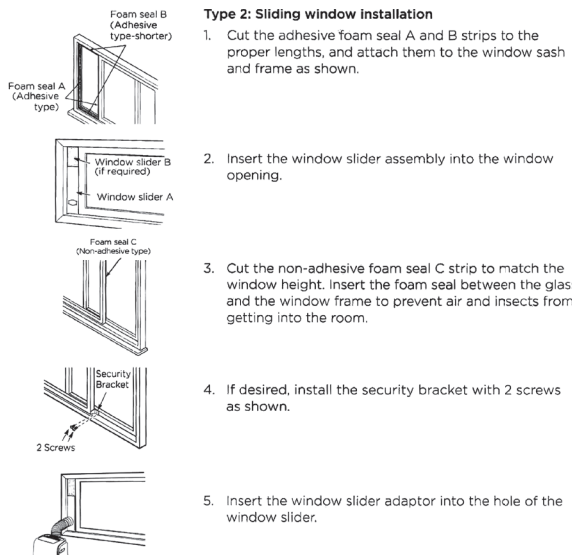
NOTICE

Once the Exhaust Hose assembly and Adjustable Window Slider are prepared, choose from one of the following two installation methods.



Type 1: Hung window installation

- Cut the adhesive foam seal A and B strips to the proper lengths, and attach them to the window sash and frame as shown.
- Insert the window slider assembly into the window opening.
- Cut the non-adhesive foam seal C strip to match the width of the window. Insert the seal between the glass and the window frame to prevent air and insects from getting into the room.
- If desired, install the security bracket with 2 screws as shown.
- Insert the window slider adaptor into the hole of the window slider.



Type 2: Sliding window installation

- Cut the adhesive foam seal A and B strips to the proper lengths, and attach them to the window sash and frame as shown.
- Insert the window slider assembly into the window opening.
- Cut the non-adhesive foam seal C strip to match the window height. Insert the foam seal between the glass and the window frame to prevent air and insects from getting into the room.
- If desired, install the security bracket with 2 screws as shown.
- Insert the window slider adaptor into the hole of the window slider.

NOTICE

To ensure proper functioning, DO NOT overextend or bend the hose. Make sure there are no obstacles within 0.5m (1.6ft) of the air outlet of the exhaust hose for the exhaust system to properly function. All illustrations in this manual are for explanation purposes only. Your air conditioner may slightly differ.

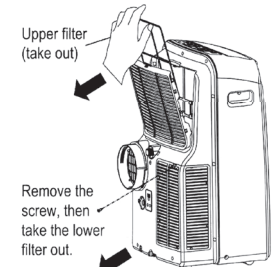


Care and Cleaning

Safety Precautions

- Always unplug the unit before cleaning or servicing.
- DO NOT use flammable liquids or chemicals to clean the unit.
- DO NOT wash the unit under running water. Doing so causes electrical danger.
- DO NOT operate the machine if the power supply was damaged during cleaning. A damaged power cord must be replaced with a new cord from the manufacturer.

Clean the Air Filter



Maintenance Tips

- Be sure to clean the air filter every 2 weeks for optimal performance.
- The water collection tray should be drained immediately after P1 error occurs, and before storage to prevent mold.
- In households with animals, you will have to periodically wipe down the grill to prevent blocked airflow due to animal hair.

Clean the Unit

Clean the unit using a damp, lint-free cloth and mild detergent. Dry the unit with a dry, lint-free cloth.

Store the Unit When Not in Use

- Drain the unit's water collection tray according to the instructions in the following section.
- Run the unit on FAN mode for 12 hours in a warm room to dry it and prevent mold.
- Turn off the unit and unplug it.
- Clean the air filter according to the instructions in the previous section. Reinstall the clean, dry filter before storing.
- Remove the batteries from the remote control.

NOTICE

Be sure to store the unit in a cool, dark place. Exposure to direct sunlight or extreme heat can shorten the lifespan of the unit.

Troubleshooting Tips

Before calling for service, review this list. It may save you time and expense. This list includes common occurrences that are not the result of defective workmanship or materials in this appliance.

Problem	Solution
Unit does not turn on when pressing ON/OFF button	Displays P1 Error Code and means the water collection tray is full. Turn off the unit, drain the water from the water collection tray, and restart the unit. If room temperature is lower than the set temperature in COOL mode, reset the temperature.
Unit does not cool well	The air filter is blocked with dust or animal hair. Turn off the unit and clean the filter according to the instructions. Exhaust hose is not connected or is blocked. Turn off the unit, disconnect the hose, check for blockage, and reconnect the hose. Temperature setting is too high; decrease the set temperature. Make sure all windows and doors are closed. The room area could be too large; doublecheck the cooling area. Check the room for possible heat sources and remove them if possible.
The unit is noisy and/or vibrates too much.	The floor is not level. Place the unit on a flat, level surface. The air filter is blocked with dust or animal hair. Turn off the unit and clean the filter according to the instructions.
The unit makes a gurgling sound.	This sound is caused by the refrigerant flow inside the unit and is normal.
Unit will not connect to WiFi or App does not work (some models).	For additional support and troubleshooting tips, follow the link in this QR code:

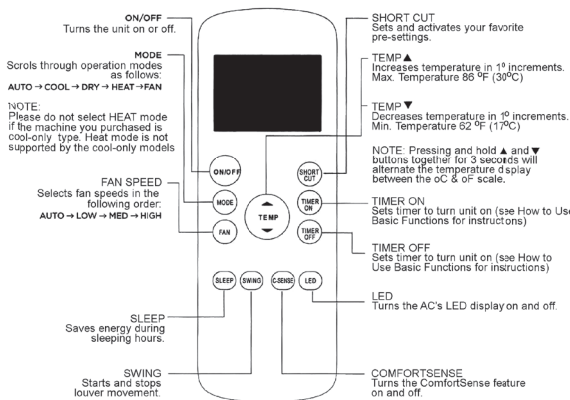
Remote Control Instructions

Remote Control Specifications

Rated voltage	3.0V (Dry batteries R03/LR03x2)
Signal receiving range	8 m (approx. 26 ft.)
Environment	-5°C - 60°C (23°F - 140°F)

Function Buttons

Before you begin using your new air conditioner, make sure to familiarize yourself with its remote control. The following is a brief introduction to the remote control itself. For instructions on how to operate your air conditioner, refer to the Operating Instructions section of this manual.



The remote control vary depend of model: The buttons on the remote control may have a different name or location than the remote control shows in this manual.

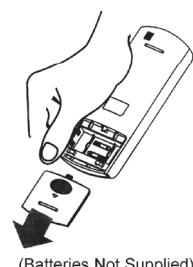
Handling the Remote Control

Not sure what a function does?

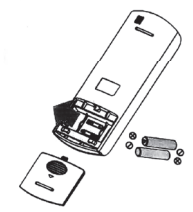
Refer to the Operating Instructions section of this manual for detailed descriptions of the functions available using the remote.

Notice

Button designs on your unit may differ slightly from the examples below. If the unit does not have a specific function, using that function's button on the remote control will have no effect.



(Batteries Not Supplied)



INSERTING AND REPLACING BATTERIES

Your air conditioning unit comes with two AAA batteries. Insert the batteries in the remote control before use.

- Slide the back cover of the remote control downward, exposing the battery compartment.
- Insert the batteries, paying attention to align the (+) and (-) ends of the batteries with the symbols inside the battery compartment.
- Slide the battery cover back into place.

BATTERY NOTES

For optimum product performance:

- Do not mix old and new batteries, or batteries of different types.
- Do not leave batteries in the remote control if you don't plan on using the device for more than 2 months.

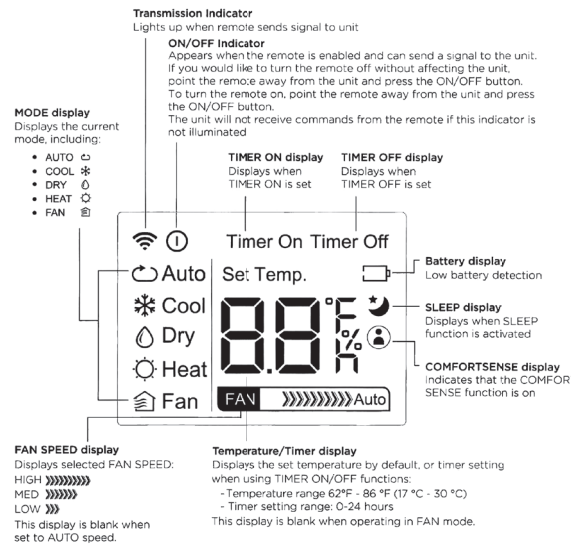
BATTERY DISPOSAL

Ensure used batteries are disposed of properly

TIPS FOR USING REMOTE CONTROL

- The remote control must be used within 26 feet/ 8 meters of the unit.
- The unit will beep when it receives a signal from the remote.
- Curtains, other materials, and direct sunlight can interfere with the IR signal receiver.
- In order to properly transmit a command, the ON/OFF indicator must be illuminated on the remote's display. (See the Remote LED Screen Indicators section for more information.)

Remote LED Screen Indicators



Basic Functions

SETTING THE DESIRED TEMPERATURE

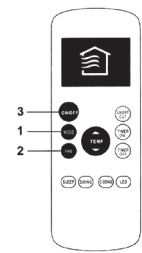
- The operating temperature range for this unit is 62°F (17-30°C). You can increase or decrease the set temperature in 1°F (1°C) increments by pressing the ↑ or ↓ buttons.

CHANGING THE MODE

- To change the operating mode, press the MODE button until the desired mode appears on the remote's display.
- Set the desired temperature.

NOTICE

If the unit does not change when the button is pressed, check that the ON/OFF indicator is illuminated. If it is not, point the remote at the unit and press the ON/OFF button.



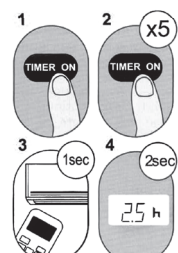
Changing the Fan Speed

- To change the fan speed, press the FAN button until the desired fan speed appears on the remote's display.

NOTICE

If the unit does not change when the button is pressed, check that the ON/OFF indicator is illuminated. If it is not, point the remote at the unit and press the ON/OFF button.

Timer Functions



Example: Setting unit to turn on after 2.5 hours.

Your air conditioning unit has two timer-related functions: **TIMER ON** - sets the amount of time after which the unit will automatically turn on.

TIMER OFF - sets the amount of time after which the unit will automatically turn off.

TIMER ON function

The TIMER ON function allows you to set a period of time after which the unit will automatically turn on, such as when you come home from work.

- Press the TIMER ON button. By default, the last time period that you set and an "h" (indicating hours) will appear on the display.

NOTICE

This number indicates the amount of time after the current time after which you want the unit to turn on. For example, if you set TIMER ON for 2 hours, "2.0h" will appear on the screen, and the unit will turn on after 2 hours.

- Press the TIMER ON button repeatedly to set the time that you want the unit to turn on.
- Wait 2 seconds, then the TIMER ON function will be activated. The digital display on your remote control will then return to the temperature display.

TIMER OFF function

The TIMER OFF function allows you to set a period of time after which the unit will automatically turn off, such as when you wake up.

- Press the TIMER OFF button. By default, the last time period that you set and an "h" (indicating hours) will appear on the display.

NOTICE

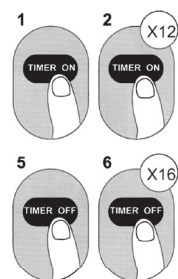
This number indicates the amount of time after the current time after which you want the unit to turn off. For example, if you set TIMER OFF for 2 hours, "2.0h" will appear on the screen, and the unit will turn off after 2 hours.

- Press the TIMER OFF button repeatedly to set the time that you want the unit to turn off.
- Wait 2 seconds, then the TIMER OFF function will be activated. The digital display on your remote control will then return to the temperature display.

NOTE

When setting the TIMER ON or TIMER OFF functions, up to 10 hours, the time will increase in 30 minute increments with each press. After 10 hours and up to 24, it will increase in 1 hour increments. The timer will revert to zero after 24 hours.

You can turn off either function by setting the timer to "0.0h".

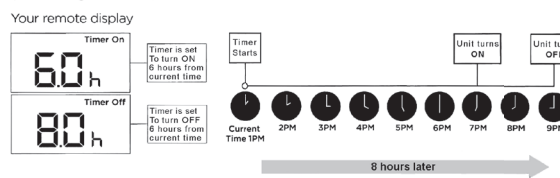


Setting both TIMER ON and TIMER OFF at the same time

Keep in mind that the time periods you set for both functions refer to hours after the current time. For example, say that the current time is 1:00 PM, and you want the unit to turn on automatically at 7:00 PM and want it to operate for 2 hours, then automatically turn off at 9:00 PM.

Do the following (side figure):

Example: Setting the unit to turn on after 6 hours, operate for 2 hours, then turn off (see the figure below)



Advanced Functions

SLEEP Function

The SLEEP function is used to decrease energy use while you sleep (and don't need the same temperature settings to stay comfortable).

Note: The SLEEP function is not available in FAN or DRY mode.

SWING Function

Used to stop or start louver movement and set the desired up/down air flow direction. The louver angle changes in 6 degree increments). By pressing for more than 2 seconds, the louver auto swing feature is activated.

COMFORTSENSE Function

The COMFORTSENSE function enables the remote control to measure the temperature at its current location. When using AUTO, COOL, or HEAT functions, measuring ambient temperature from the remote control (instead of from the indoor unit itself) will enable the air conditioner to optimize the temperature around you and ensure maximum comfort.

- Press COMFORTSENSE button to activate function. The remote control will send temperature signal to the unit every three minutes.
- Press COMFORTSENSE button again to turn off this function.

SHORTCUT Function

- Used to restore the current settings or resume previous settings.
- Push this button when remote controller is on, the system will automatically revert back to the previous settings including operating mode, setting temperature, fan speed level and sleep feature (if activated).
- By pressing for more than 2 seconds, the system will automatically store the current operation settings including operating mode, setting temperature, fan speed level and sleep feature (if activated).

SYSTEM OVERVIEW

Devices required to use the Smart AC:

- Smart Phone with compatible iOS or Android system.
- Wireless Router
- Smart Air Conditioner

DOWNLOAD AND INSTALL THE APP

Android QR code



Apple QR code



Scan to download app.

- You can also go to Google Play or App Store and search for Midea Air.

NOTICE

All the images in this manual are for reference only, your product and app may look slightly different. The actual product and app instructions have to be considered.

REFURBISHED PRODUCT LIMITED THIRTY DAY WARRANTY

The **Refurbished Product Service Center** offers the following WARRANTY to the ORIGINAL purchaser of a product which we have refurbished.

This product that has been refurbished is warranted against any electronic or mechanical defects for a period of THIRTY DAYS from the date of the original purchase by the consumer. Since this unit was sold as a refurbished item, the warranty does not apply to any cosmetic appearance items such as scratches. Should a defect occur, the **Refurbished Product Service Center** will repair or, at its option, replace defective unit/parts with new or rebuilt materials without charge for either parts or labor. Replacement unit/parts will be warranted for the remaining portion of the original warranty period.

This warranty does not cover installation or damage from accident, misuse, abuse, improper wiring, incorrect voltage, operating the unit against the instructions in the owner's manual or any product which has been opened, altered, or tampered with.

This warranty does not cover costs for removal and or installation of the unit for repair. Under no circumstances shall the service center be liable for any special, incidental or consequential damages or for any other expenses incurred by reason of use or sale of this product. This warranty is in lieu of any other warranties expressed or implied warranty of merchantability of fitness for particular use or otherwise.

This warranty gives the consumer specific legal rights and they may also have other rights which vary from State to State. Some States do not follow the exclusion or limitation of incidental or consequential damages, hence the above exclusion and limitations may not apply.

Refurbished Product Service Center

13225 Marquardt Avenue Santa Fe Springs, CA 90670

WARRANTY REPAIR INFORMATION

If you need service on your unit during the 30 day warranty period; please go to www.ConsumerServiceRefurbish.com or call the Refurbished Product Service Center at 562-946-3531 to obtain the required claim number. Once you obtain your claim number, pack the unit properly (the original carton is ideal for this purpose) along with a copy of your purchase receipt. Send the unit freight prepaid and insured to:

Refurbished Product Service Center,

At: Customer Service Department 13225 Marquardt Avenue Santa Fe Springs, CA 90670

Your unit will be promptly exchanged and returned to you. We will refuse to accept delivery of the returned unit unless the assigned claim number appears on the outside of the shipping carton.

Owner's Information

(Keep for your permanent records)

NAME: _____
 ADDRESS: _____
 CITY: _____ STATE: _____ ZIP CODE: _____
 PHONE: _____ E-MAIL: _____
 MODEL: _____ SERIAL NO.: _____