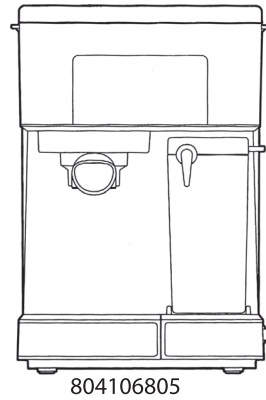


CHEFMAN®

Barista Pro ESPRESSO MACHINE USER MANUAL

It's important to read this manual prior to using your new product for the first time.



SAFETY INSTRUCTIONS IMPORTANT SAFEGUARDS

WARNING: When using electrical appliances, basic safety precautions should always be followed to reduce the risk of fire, electric shock, and/or injury to persons, including:

1. Read all instructions.
2. Do not touch hot surfaces. Use handles or knobs.
3. To protect against electric shock, do not place the cord, plugs, or appliance in water or other liquids.
4. Close supervision is necessary when any appliance is used by or near children.
5. Unplug from the outlet when not in use and before cleaning. Allow to cool before putting on or taking off parts, and before cleaning the appliance.
6. Do not operate any appliance with a damaged cord or plug, or after the appliance malfunctions or has been damaged in any manner. In such cases, contact a Service center.
7. The use of an accessory not evaluated for use with this appliance may cause injuries.
8. Do not use outdoors.
9. Do not let the cord hang over the edge of a table or counter or touch hot surfaces.
10. Do not place on or near a hot gas or electric burner, or in a heated oven.
11. Always attach the plug to the appliance first, then plug the cord into the wall outlet. To disconnect, turn any control to off, then remove the plug from the wall outlet.
12. Do not use the appliance for other than intended use.

WARNING: This appliance has a polarized plug (one blade is wider than the other). This plug is intended to fit into a polarized outlet only one way. If the plug does not fit fully into the outlet, reverse the plug. If it still does not fit, contact a qualified electrician. Do not attempt to modify the plug in any way or force it into the outlet. This could result in injury or electric shock.

SHORT-CORD INSTRUCTIONS

A short power-supply cord is provided to reduce the hazards of entanglement or tripping over a longer cord. Longer detachable power-supply cords or extension cords are available and may be used if care is exercised in their use. If a longer detachable power-supply extension cord is used:

1. The marked electrical rating of the extension cord should be at least as great as the electrical rating of the appliance.
2. The cord should be arranged so that it will not drape over the countertop or tabletop where it can be pulled on by children or tripped over.

POWER-CORD SAFETY TIPS

1. Never pull or yank on the cord or the appliance.
2. To insert the plug, grasp it firmly and guide it into the outlet.
3. To disconnect the appliance, grasp the plug and remove it from the outlet.
4. Before each use, inspect the power cord for cuts and/or abrasion marks. If any are found, this indicates that the appliance should be serviced and the power cord replaced. Please contact a Service Center.
5. Never wrap the cord tightly around the appliance, as this could place undue stress on the cord where it enters the appliance and cause it to fray and break.

DO NOT OPERATE THE APPLIANCE IF THE POWER CORD SHOWS ANY DAMAGE OR IF THE APPLIANCE WORKS INTERMITTENTLY OR STOPS WORKING ENTIRELY.

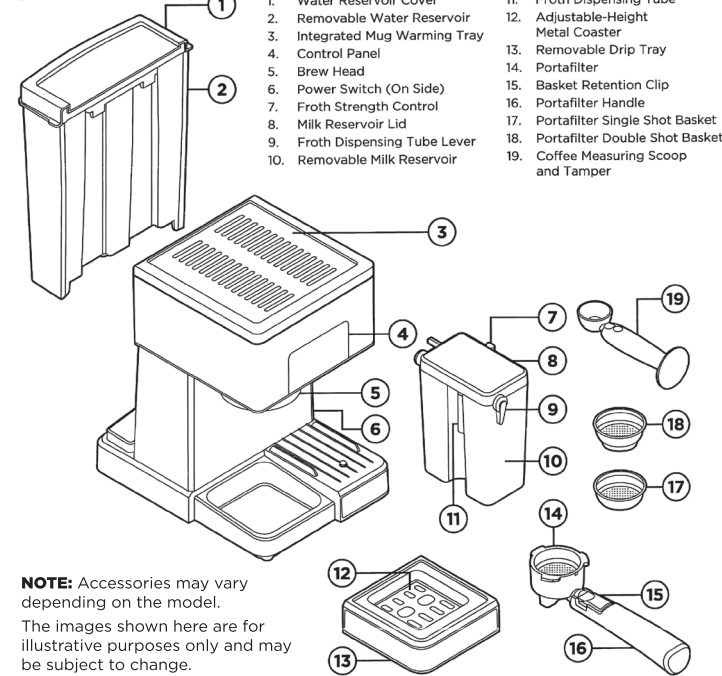
California Proposition 65:
(Applicable for California Residents only)
WARNING:
Cancer and Reproductive Harm -
www.P65Warnings.ca.gov.



Do not place the appliance on a stovetop or any other heatable surface.

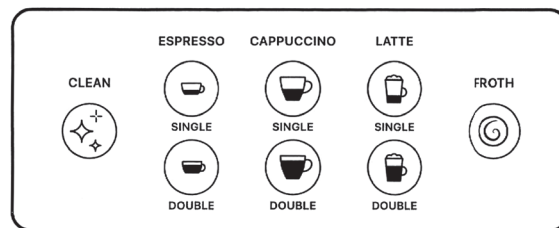
SAVE THESE INSTRUCTIONS

FEATURES



NOTE: Accessories may vary depending on the model. The images shown here are for illustrative purposes only and may be subject to change.

CONTROL PANEL



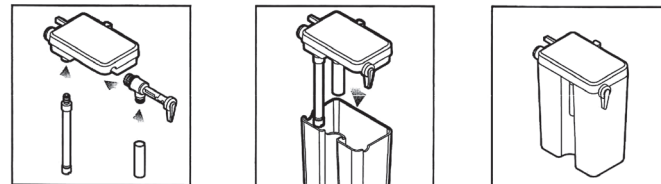
- When the power is switched on, the unit will beep three times and be in standby mode. The unit will automatically begin preheating, and all available functions on the display will light. (**NOTE:** If the milk reservoir is not on the unit, only the Single and Double Espresso buttons will light.)
- When you make your drink selection, only that button will remain illuminated, and it will blink during the remaining preheating time. (Do not press the button again, or you will cancel your selection.)
- As the unit begins brewing, the selected button will turn solid.
- When brewing is complete, the unit will beep three times; all buttons will light up and the unit will return to standby mode. If no longer using the espresso machine, you may wish to turn it off.
- After 20 minutes of no use, the unit will go into sleep mode with only the Clean icon lit up. To wake the unit up, press the Clean icon.
- When the Froth button is pressed, the froth function will run for 30 seconds. (All other function lights will turn off.) You can end frothing before 30 seconds by pressing the Froth button again.

NOTE: The image shown here is for illustrative purposes only and may be subject to change. The actual descriptions of control panel and their locations may vary, depending on the model.

OPERATING INSTRUCTIONS

BEFORE FIRST USE

1. Remove all packaging materials.
2. Remove and hand wash the water reservoir, milk reservoir, portafilter, portafilter baskets, measuring scoop, drip tray, and removable coaster with a mild detergent and water. Rinse and dry well. Only the metal baskets and coaster are top-rack dishwasher-safe. All other parts are NOT dishwasher-safe. **NOTE:** The four parts of the milk reservoir lid can come apart and are easily reassembled. To reassemble, follow the diagrams below.



3. Before first use, you must prime the unit (clean and remove any packaging debris) according to the directions below.

IMPORTANT: PRIME THE UNIT BEFORE FIRST USE

To prime the unit, follow these steps:

1. Fill the water reservoir to between the Min and Max markings on the tank.
2. Remove the milk reservoir. (Tilt it up first, then pull it out.) Fill the milk reservoir with water (not milk) to between the Min and Max markings on the tank and return it to the unit. (To insert it, tilt down and push it firmly into place.)
3. Place a large heatproof cup or mug on the metal coaster set over the drip tray. (**NOTE:** The coaster is reversible to make the height adjustable.)
4. Set the froth strength to Extra. Use the silver froth tube lever to position the froth dispensing tube inside the cup.
5. Place an empty portafilter basket in the portafilter.
6. Fit the portafilter onto the brew head unit, making sure it's locked in place.
7. Plug in the unit and turn it on. (The power switch is located on the side toward the bottom.)
8. Press the Double Cappuccino button.
9. The button will blink as the unit preheats; do not press the button again or you will cancel the function.
10. Let the cup fill with water from the brew head and from the froth dispensing tube. When the brew cycle function ends, the unit will beep three times. Carefully dispose of the water in the cup and in the milk reservoir. The unit is now primed and ready for use.

CHOOSE THE RIGHT SIZE CUP

With 15 bars of pressure, the Barista Pro Espresso Machine allows for a wide variety of coffee drinks from a tiny espresso to a large latte. See the chart to choose the right size cup. Be aware that the actual amount will vary depending on such variables as the coffee grind and froth amount. Note that you can flip the metal coaster over the drip tray to change the height of the cup under the brew head.

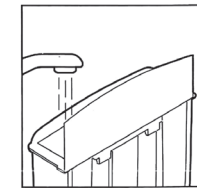
DRINK	SHOTS	VOLUME (APPROX.)
Espresso	Single	1.75 oz
Espresso	Double	3.25 oz
Cappuccino	Single	3.5 oz
Cappuccino	Double	6.25 oz
Latte	Single	5.75 oz
Latte	Double	10 oz

CHOOSE THE RIGHT THE COFFEE AND GRIND

For best results, use freshly ground espresso beans as pre-ground beans lose their flavor fast. The grind should be fine, like table salt. If the grind is too fine (it will feel powdery when rubbed between your fingers), the water will not flow through even under pressure. If the grind is too coarse, the water will flow through too fast, resulting in a weak flavor. Finding your preferred grind may take some practice.

HOW TO FILL THE WATER RESERVOIR

To fill the reservoir with water, open the lid and add the desired amount of cold water between the Min and Max markings on the tank. Use either a pitcher while the reservoir is on the unit, or remove the reservoir from the unit and fill it at the sink. Never use warm or hot water to fill the water reservoir. Close the water reservoir lid, and place it back in the unit, if necessary, ensuring it fits tightly in place.



HOW TO FILL THE MILK RESERVOIR

If you plan to prepare cappuccino or latte, you will need to fill the milk reservoir; it can be left empty or even off the unit for espresso.

To remove the milk reservoir from the unit, tilt it up before pulling it out. Fill it with cold milk to between the Min and Max markings on the tank. To put the milk reservoir back on the unit, tilt it down before sliding it firmly back in place.



NOTE: You can use any type of milk—whole, skim, soy, oat—to make froth.

HOW TO CHOOSE AND INSERT THE PORTAFILTER BASKET

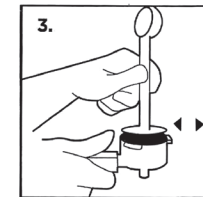
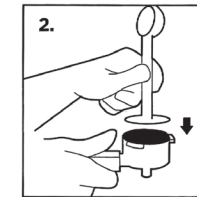
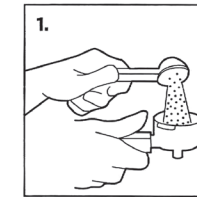
To insert the basket into the portafilter, simply drop the basket into it.

- Use the smaller basket for a single shot of espresso.
- Use the larger basket for either making a larger size drink or to have a double dose of espresso in a smaller size drink.

HOW TO PACK THE PORTAFILTER WITH COFFEE

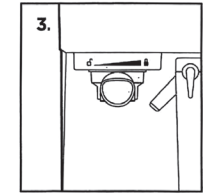
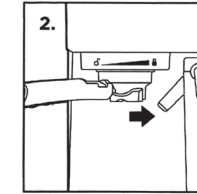
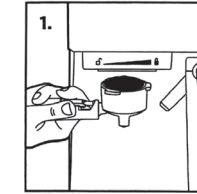
1. Put a basket in the portafilter (use a single shot basket for single espresso drinks and double shot basket for double drinks).
2. Use the coffee measuring spoon to fill the basket with finely ground espresso beans (do not overfill).
3. Using the tamper end of the measuring spoon, press on the grounds firmly and

4. Clean any excess grounds from the rim of the portafilter to ensure a proper fit in the brew head.



HOW TO PLACE THE PORTAFILTER ON THE BREW HEAD

1. Position the portafilter underneath the brew head with its handle facing to the left.
2. Insert the portafilter up into the brew head, lining up the handle with the open lock icon on the unit.
3. Slowly turn the handle to the right until resistance is felt and the handle is aligned with the locked icon on the unit; the handle will be at an approximately 90° angle to the machine.



CAUTION: To avoid possible burns from hot steam and water or damage to the unit, never remove the water reservoir or the portafilter while brewing or frothing. If you intend to make a second cup, be sure the unit is in standby mode—all buttons will be lit and solid—before removing or inserting the portafilter. If you need to add more water or milk to the reservoirs, switch off the unit by pressing the button on the side of the unit.

HOW TO MAKE AN ESPRESSO

Espresso is a unique method of coffee brewing in which hot water is forced through finely ground coffee beans for a richer and more full-bodied brew than regular drip. Because of its strength, espresso is usually served in small (1½ to 2 oz) portions.

1. Make sure the unit is plugged in.
2. Turn the unit on using the power switch located on its side.
3. Fill the water reservoir.
4. Pack the portafilter with finely ground coffee beans, and attach it to the brew head.
5. Position the metal coaster in the drip tray with its taller side up. Place a small heatproof cup on the metal coaster over the drip tray.
6. Select the Single Espresso or Double Espresso button. The button will blink as the unit preheats, then turn solid when brewing begins. When brewing is complete, the unit will beep three times, and your espresso will be ready to enjoy.
7. When the brewing cycle ends, the unit will go into standby mode and will be preheating in the background. If no button is pressed within 20 minutes, it will switch to sleep mode.
8. To discard spent grounds, remove the portafilter and let it cool. Hold the portafilter basket in place by flipping up the portafilter basket retention clip to partially cover the lip of the basket and portafilter. Press on the clip with your thumb to hold the basket in place as you empty the grounds.

HOW TO MAKE A CAPPUCCINO

A cappuccino is a delicious beverage made with equal parts espresso, steamed milk, and milk froth. When using the cappuccino presets, there is no need to manually froth the milk; it will occur automatically.

1. Make sure the unit is plugged in.
2. Turn the unit on using the power switch located on its side.
3. Fill the water reservoir.
4. Fill the milk reservoir with milk between the Min and Max lines, and insert it onto the unit. (If the milk reservoir is not on the unit, the cappuccino function will not work.)
5. Set the froth strength to Standard.
6. Position the metal coaster in the drip tray according to the size of your mug. Place a heatproof cup or mug on the coaster.
7. Use the silver froth tube lever to position the froth dispensing tube over the cup.
8. Pack the portafilter with ground coffee, and attach it to the brew head.
9. Select the Single Cappuccino or Double Cappuccino button. The button will blink as the unit preheats, then turn solid when brewing begins. When brewing is complete, the unit will beep three times, and your cappuccino will be ready to enjoy.
10. When the brewing cycle ends, the unit will go into standby mode and will be preheating in the background. If no button is pressed within 20 minutes, it will switch to sleep mode.
11. To discard spent grounds, remove the portafilter and let cool. Hold the portafilter basket in place by flipping up the portafilter basket retention clip to partially cover the lip of the basket and portafilter. Press on the clip with your thumb to hold

the basket in place as you empty the grounds. **NOTE:** Be sure to clean the froth dispensing tube after every use.

HOW TO MAKE A LATTE

A latte is a larger coffee drink made with mostly steamed milk and a little espresso. When using the latte presets, there is no need to manually froth the milk; it will occur automatically.

1. Make sure the unit is plugged in.
2. Turn the unit on using the power switch located on its side.
3. Fill the water reservoir.
4. Fill the milk reservoir with milk to between the Min and Max lines, and insert it into the unit. (If the milk reservoir is not on the unit, the latte function will not work.)
5. Set the froth strength to Standard.
6. Position the metal coaster in the drip tray with its taller side facing down. Place a large heatproof cup or mug on the coaster. **NOTE:** Be sure to use a large mug, especially with a double latte, which can yield as much as 10 oz.
7. Use the silver froth tube lever to position the froth dispensing tube over the cup.
8. Pack the portafilter with ground coffee, and attach it to the brew head.
9. Select the Single Latte or Double Latte button. The button will blink as the unit preheats, then turn solid when brewing begins. When brewing is complete, the unit will beep three times, and your latte will be ready to enjoy.
10. When the brewing cycle ends, the unit will go into standby mode and will be preheating in the background. If no button is pressed within 20 minutes, it will switch to sleep mode.
11. To discard spent grounds, remove the portafilter and let cool. Hold the portafilter basket in place by flipping up the portafilter basket retention clip to partially cover the lip of the basket and portafilter. Press on the clip with your thumb to hold the basket in place as you empty the grounds. **NOTE:** Be sure to clean the froth dispensing tube after every use.

HOW TO ADD MORE FROTH OR FROTH MILK SEPARATELY

The Barista Pro Espresso Machine also allows you to add more frothed milk to your coffee drink and to prepare frothed milk on its own for macchiatos or to add to hot chocolate. Be sure the froth dispensing tube is positioned over the cup, then simply press the Froth button. The milk will froth for about 30 seconds. If you want less time, simply press the Froth button again to stop frothing. **NOTE:** Be sure to clean the froth dispensing tube after every use.

TROUBLESHOOTING

PROBLEM	POSSIBLE CAUSES	SOLUTIONS
Coffee does not come out.	<ol style="list-style-type: none"> 1. Appliance not turned on or not plugged in. 2. No water in reservoir. 3. Coffee is ground too fine. 4. Too much coffee in filter basket. 5. Coffee has been tamped down too much. 6. Unit has not been used for a while. 	<ol style="list-style-type: none"> 1. Plug in unit and turn it on. 2. Add water. 3. Grind less fine. 4. Add less coffee. 5. Refill filter and tamp less. 6. Unit needs priming.
Coffee comes out around the edge of the portafilter.	<ol style="list-style-type: none"> 1. Portafilter not rotated to full lock position. 2. Coffee grounds were left around the filter basket rim. 3. Too much coffee in filter basket. 	<ol style="list-style-type: none"> 1. Rotate portafilter to locked position. 2. Wipe off rim. 3. Fill with less coffee.
Milk is not foamy after frothing or is not coming out of tube.	<ol style="list-style-type: none"> 1. Unit ran out of steam. 2. Milk is not cold enough. 3. Frothing tube is blocked. 	<ol style="list-style-type: none"> 1. Ensure there is enough water in the reservoir. 2. Chill milk and frothing reservoir. 3. Follow the instructions on to clean the milk reservoir and frothing tube.
Coffee comes out too quickly.	<ol style="list-style-type: none"> 1. Coffee grind is too coarse. 2. Not enough coffee in filter. 	<ol style="list-style-type: none"> 1. Use a finer grind. 2. Add more coffee.
Coffee is too weak.	<ol style="list-style-type: none"> 1. Using single filter basket for double shot. 2. Coffee grind is too coarse. 	<ol style="list-style-type: none"> 1. Use double filter basket for double shot. 2. Use a finer grind.

CLEANING AND MAINTENANCE

HOW TO CLEAN THE PORTAFILTER AND BREW HEAD

NOTE: This method of cleaning is useful if you make espresso only. If you make cappuccino or latte or use the milk frothing tube separately, you can clean the brew head, portafilter, and frothing tube all at the same time following the directions below.

1. Before cleaning, turn off the unit and unplug it. Some of the metal parts might still be hot. Do not touch them with your hands until they have cooled.
2. If not already out, remove the portafilter and discard the used coffee grounds. To hold the basket in place while emptying the grounds, flip up the portafilter basket retention clip and hold it down with your thumb as you empty the basket.
3. Wash the basket and portafilter with warm, soapy water, and rinse well. Single and double shot baskets are top-rack dishwasher-safe, but the portafilter is not.
4. Wipe the underside of the brew head with a damp cloth or paper towel to remove any coffee grounds that might have been left behind.

HOW TO CLEAN THE MILK RESERVOIR AND FROTHING TUBE

1. Remove the milk reservoir from the unit (tilt it up before pulling it out). Transfer any remaining milk to another container and refrigerate.
2. Wash the milk reservoir and its lid thoroughly with warm, soapy water. Rinse well. Do not use abrasive cleaners and scouring pads, as they will scratch the finish. The milk reservoir is NOT dishwasher-safe.
3. Attach the portafilter with an empty basket in it to the brew head on the unit.
4. Place a large empty cup under the brew head, and be sure there is water in the water reservoir.
5. Add fresh water to the milk reservoir and return it to the unit.
6. Set the froth strength to Extra. Use the silver froth tube lever to position the froth dispensing tube over the cup.
7. Press the Clean button. Hot water and steam will come out in bursts. Do not remove the cup until the clean cycle has completely ended (the unit will beep three times and other function buttons will light up). **NOTE:** If the clean cycle is canceled before finishing, wait a few minutes before removing the cup as more hot water and steam may be expelled.
8. After the cycle ends, discard the water in the mug and any water left in the milk and water reservoirs.

HOW TO CLEAN THE WATER RESERVOIR

Empty the water reservoir between uses. Discard the remaining water by removing the reservoir and emptying it into the sink. Wash the water reservoir as needed with warm, soapy water, rinse well, and wipe dry. The water reservoir is NOT dishwasher-safe.

HOW TO CLEAN THE HOUSING AND STORE THE UNIT

1. Wipe the housing with a soft, wet cloth. Do not use abrasive cleaners or scouring pads, as they can scratch the finish. **CAUTION:** Do not immerse the appliance, cord, or plug in water.
2. Do not store the portafilter in the brew head. This can adversely affect the seal between the brew head and the portafilter while brewing espresso.
3. Decalcify the unit as needed according to the directions that follow.

HOW TO DECALCIFY

Over time, mineral deposits will build up in the unit and affect its operation. Your appliance must be decalcified when you notice an increase in the time required to brew espresso or when there is excessive steaming. Also, you may notice a buildup of white deposits on the surface of the brew head. The frequency of cleaning depends upon the hardness of your water.

TO DECALCIFY INTERNAL PARTS

1. Be sure the unit is cool, off, and unplugged.
2. Fill the water reservoir with white vinegar to between the Min and Max markings on the tank. Fill the milk reservoir with water and slide it into the unit.
3. Put a large cup or jar on the drip tray, and position the froth dispensing tube in the cup.
4. Insert the portafilter with an empty basket in it into the brew head.
5. Plug in the unit and turn it on.
6. Press the Clean button.
7. Repeat steps 1-6 as necessary using only fresh water to rinse any remaining traces of vinegar from the machine.

HOW TO DECALCIFY THE WATER RESERVOIR

1. Fill the water reservoir with fresh, undiluted white vinegar.
2. Let sit for at least 8 hours; the reservoir may be placed on the unit during this time.
3. Discard the vinegar, then rinse the water reservoir thoroughly with fresh water.

REFURBISHED PRODUCT LIMITED THIRTY DAYS WARRANTY

The **Refurbished Product Service Center** offers the following WARRANTY to the ORIGINAL purchaser of a product which we have refurbished.

This product that has been refurbished is warranted against any electronic or mechanical defects for a period of THIRTY DAYS from the date of the original purchase by the consumer. Since this unit was sold as a refurbished item, the warranty does not apply to any cosmetic appearance items such as scratches. Should a defect occur, the **Refurbished Product Service Center** will repair or, at its option, replace defective unit/parts with new or rebuilt materials without charge for either parts or labor. Replacement unit/parts will be warranted for the remaining portion of the original warranty period.

This warranty does not cover installation or damage from accident, misuse, abuse, improper wiring, incorrect voltage, operating the unit against the instructions in the owner's manual or any product which has been opened, altered, or tampered with.

This warranty does not cover costs for removal and or installation of the unit for repair. Under no circumstances shall the service center be liable for any special, incidental or consequential damages or for any other expenses incurred by reason of use or sale of this product. This warranty is in lieu of any other warranties expressed or implied warranty of merchantability of fitness for particular use or otherwise.

This warranty gives the consumer specific legal rights and they may also have other rights which vary from State to State. Some States do not follow the exclusion or limitation of incidental or consequential damages, hence the above exclusion and limitations may not apply.

Refurbished Product Service Center
13225 Marquardt Avenue Santa Fe Springs, CA 90670.

WARRANTY REPAIR INFORMATION

If you need service on your unit and this product requires repair during the 30 days warranty period; please go to www.ConsumerServiceRefurbish.com or call the **Refurbished Product Service Center** at 562-946-3531 to obtain the required return authorization (RA) number. Pack the unit properly (the original carton is ideal for this purpose) along with a copy of your purchase receipt and a letter describing the problem. Send the unit freight prepaid and insured to:

Refurbished Product Service Center,
Att: Customer Service Department 13225 Marquardt Avenue Santa Fe Springs, CA 90670

Your unit will be promptly repaired and returned to you. We will refuse to accept delivery of the returned unit unless the assigned RA number appears on the outside of the shipping carton.

Owner's Information
(Keep for your permanent records)

NAME: _____

ADDRESS: _____

CITY: _____ STATE: _____ ZIP CODE: _____

PHONE: _____ E-MAIL: _____

MODEL: _____ SERIAL NO.: _____

NOTE: In order to ensure the highest possible standard for refurbished items, all units are thoroughly inspected as part of the process. For this item, water may be used during the refurbishing process and so; you may notice some condensation in the water reservoir. It is recommended to rinse the water reservoir with fresh water prior to its first use.

