

YOUR SAFETY FIRST!



IMPORTANT SAFEGUARDS

	Is used to alert you to potential personal injury hazards. Obey all safety messages that follow this symbol to avoid possible injury or death.
	Indicates a hazardous situation which, if not avoided, could result in death or serious injury.
	Indicates a hazardous situation which, if not avoided, could result in minor or moderate injury.
	Is used to provide important information not related to personal injury. When you see this sign, please take note of the advice for the correct and safe use of your appliance.

VertuoPlus appliance contains a class-1 laser product.

Vertuo Next: magnets inside.

Vertuo Next: no ferromagnetic tools or materials.

When using electrical appliances, basic important safeguards should always be followed, including the following:

- Read all instructions.
- At least one copy of this manual should be kept in a location available at all times to maintenance and management staff.
- Do not use outdoors.
- Do not let cord hang over edge of table or counter, or touch hot surfaces.
- The appliance is intended to prepare beverages according to these instructions.
- **WARNING:** Risks of injuries if you don't use this appliance correctly.
- This appliance should only be used for intended purpose.
- This appliance is only meant for indoor use, under non-extreme temperature conditions.
- The appliance must not be used, cleaned, or maintained by children under 8 years of age unless supervised, instructed by an adult on how to use the appliance safely, and fully informed regarding the dangers involved.
- Keep appliance, power cord and capsule holder out of reach of children.
- This appliance may be used by persons with reduced physical, sensory or mental capabilities, or whose experience or knowledge is not sufficient, provided they are supervised or have received instruction to use the device safely and understand the dangers.
- Only use capsules intended for this appliance: If the capsule does not fit, do not force the capsule into the appliance.
- **WARNING:** To avoid the risk of injury, do not open the brew chamber during the brew process.
- Vertuo Next: Machine contains magnets.

Avoid risk of fatal electrical shock and fire to protect against fire, electric shock and injury to persons.

- If the supply cord or the plug are damaged, they must be replaced by the manufacturer, its service agent or similarly qualified persons.
- If the supply cord or the plug are damaged, do not operate the appliance. Only return the appliance to the Nespresso Club or to a Nespresso authorized representative.
- To disconnect, turn machine "OFF", then remove the plug from the outlet.
- To avoid hazardous damage, never place the appliance on or beside hot surfaces such as radiators, stoves, ovens, gas burners, open flames, or similar.
- Do not touch hot surfaces. Use handles or knobs.
- Disconnect from outlet before cleaning. Allow to cool before adding or removing parts, and before cleaning the appliance.
- Do not use any strong cleaning agent or solvent cleaner.

- Use a damp cloth and mild cleaning agent to clean the surface of the appliance.
- Do not use a steam or pressure cleaner to clean the appliance. This will damage the appliance and may create a life-threatening hazard.
- Always follow the cleaning instruction to clean your appliance.
- Never immerse the cord, plug, appliance or any part of it in water or any other liquid.
- Electricity and water together are dangerous and can lead to fatal electric shocks.
- Do not put anything else than specified capsules into any openings, doing so may cause fire or electric shock!
- The use of accessory attachments not recommended by the appliance manufacturer may result in fire, electric shock, or injury.

Avoid possible harm when operating the appliance.

- Risk of scalding by hot liquids. If the machine is forced open hot liquids and coffee grounds may splash. Always lock the system completely and never open it during operation.
- Be careful, capsule is hot. Risk of scalding. If a capsule is blocked in the capsule compartment, turn the machine off and unplug it before any operation.

OTHER SAFEGUARDS

When using electrical appliances, important safeguards should always be followed, including the following:

- The important safeguards are part of the appliance. Read the important safeguards provided with the appliance carefully prior to first use. Keep them in a place where you can find and refer to them in the future.
- Protect the appliance from direct sunlight, water splash and humidity.
- Close supervision is necessary when the appliance is used by or near children.
- Children shall not play with the appliance.
- The manufacturer accepts no responsibility for and the warranty will not apply to any commercial use, inappropriate handling or use of the appliance, damage resulting from use for other purposes, faulty operation, non-professional repairs or failure to comply with the instructions.

Avoid risk of fatal electrical shock and fire to protect against fire, electric shock and injury to persons.

- In case of emergency: immediately remove the plug from the power outlet. Exception for VertuoPlus: Do not remove plug in case of pinching during machine head movement, when automatic reverse mechanism will operate.
- Only plug the appliance into suitable, easily accessible, grounded outlets. Make sure that the voltage of the power source is the same as that specified on the rating plate. The use of an incorrect voltage or frequency of electricity voids the warranty.
- The appliance must only be connected after installation.
- Do not pull the cord over sharp edges, clamp it or allow it to hang down.
- Keep the cord away from heat and moisture.
- If an extension lead is required, use only a grounded power cord with a conductor cross-section with matching input 16 AWG (1.3 mm²).
- Always place the appliance on a horizontal, stable, hard, even surface that does not allow for water accumulation under the machine.
- The surface must be resistant to heat and fluids, like water, coffee, descaler or similar.
- Disconnect the appliance from the power outlet when not in use for a long period of time.
- Disconnect by pulling out the plug; do not pull on the cord itself to avoid damage.
- Never touch the cord with wet hands.
- Never put the appliance or part of it in a dishwasher.
- Do not open the appliance. Hazardous voltage inside!
- Do not dismantle the appliance.

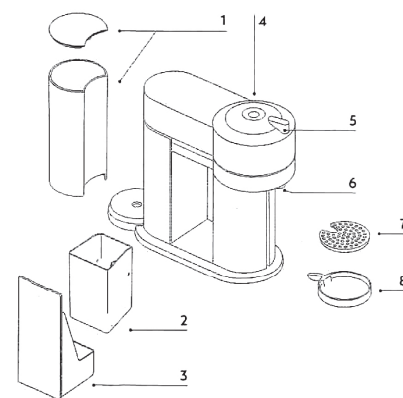
Avoid possible harm when operating the appliance.

- Never leave the appliance unattended during operation.
- Do not use the appliance if it is damaged or not operating perfectly. Immediately remove the plug from the power outlet.
- A damaged appliance can cause electric shocks, burns and fire.
- The appliance shall not be placed in a cabinet when in use.
- Do not put fingers under coffee outlet; risk of scalding.

"Recipe book is not included"
804106896

1 MACHINE OVERVIEW

VERTUO NEXT



1 Water tank and lid

2 Used capsule container

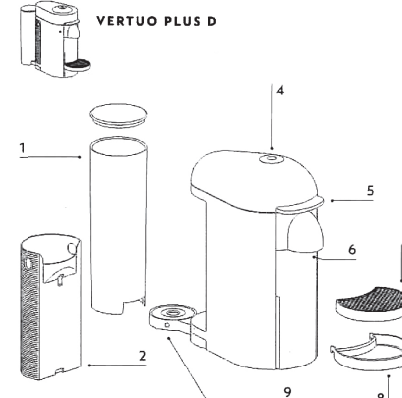
3 Drip tray

4 ON/OFF and coffee button

5 Locking/Unlocking lever

6 Coffee outlet

VERTUO PLUS C



VERTUO PLUS D

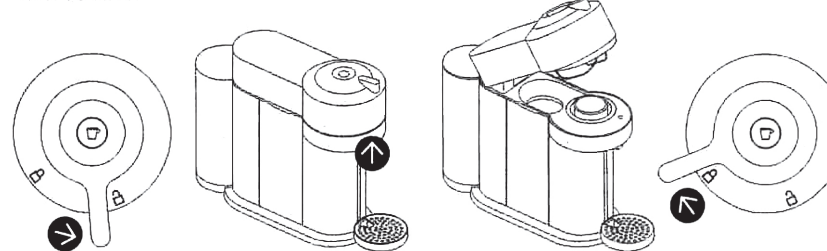
7 Drip grid

8 Adjustable cup support

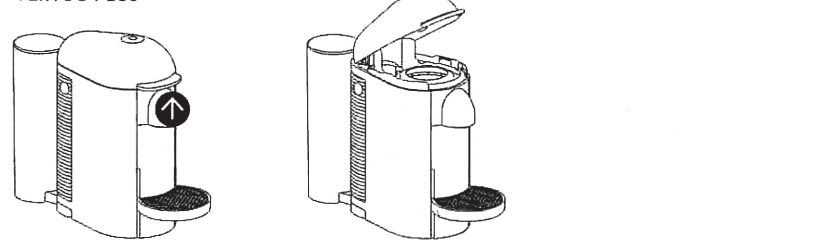
9 Adjustable water tank arm

OPEN/CLOSE

VERTUO NEXT



VERTUO PLUS



"NOTE: Accessories may vary depending on the model.

The images shown here are for illustrative purposes only and may be subject to change."

Short cord instructions

- Use the power cord supplied with the device in an unmodified form. It is important for user safety that the appliance is only used with a suitably grounded electrical supply.
- a) A short power supply cord or detachable power supply cord is to be used to reduce risks resulting from becoming entangled in or tripping over a longer cord. The appliance is provided with an attached cord.
- b) Extension cords may be used if care is exercised in their use.
- c) If a long detachable power cord or extension cord is used:
 - 1) The marked electrical rating or the detachable power cord or extension should be at least as great as the electrical rating of the appliance.
 - 2) The longer cord should be arranged so that it will not dangle over the countertop or tabletop, where it can be pulled on by children or tripped over.
 - 3) The appliance is grounded and only grounded extension cord should be used (type 3-wire cord).
- The appliance has a grounded plug (two blades and one round pin).
- To reduce the risk of electric shock, this plug is intended to fit into a grounded outlet only one way.
- If the plug does not fit fully into the outlet, reverse the plug.
- If it still does not fit, contact a qualified electrician.
- Do not attempt to modify the plug in any way.

Descaling

- The descaling solution can be harmful. Avoid contact with eyes, skin and surfaces.
- Nespresso descaling agent, when used correctly, helps to ensure the proper functioning of your machine over its lifetime and that your coffee experience is as perfect as on the first day.

SAVE THESE INSTRUCTIONS

Pass them on to any subsequent user.

- VertuoPlus: This appliance is designed for household use only.
- Vertuo Next: This appliance is intended to be used in households and hospitality applications such as: staff kitchen areas, offices and other working environments, farm houses; by clients in hotels, motels and other residential environments; bed and breakfast type environments.

Maintenance Instruction

- Any servicing other than cleaning and user maintenance should be performed by an authorized service representative.

CONNECTIVITY (VERTUO NEXT ONLY) BLUETOOTH WI-FI ON/OFF



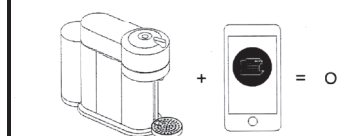
1. Unplug the machine



2. Press the button, plug and hold the button



3. Operation completed



PAIRING

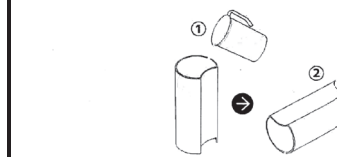


1. Download the Nespresso App

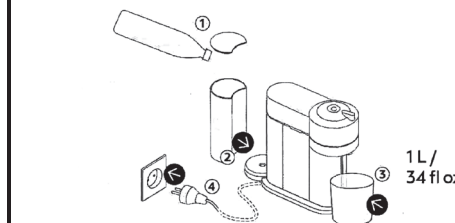
THE VERTUO SYSTEM

- Espresso (40 ml / 1.35 fl oz.)
- Double Espresso (80 ml / 2.7 fl oz.)
- Gran Lungo (150 ml / 5.07 fl oz.)
- Coffee / Mug (230 ml / 7.77 fl oz.)
- Alto (414 ml / 14 fl oz.)

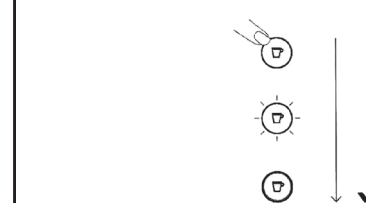
FIRST STEPS



1. Rinse the water tank



2. Place a container

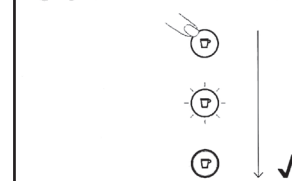


3. Turn on your machine

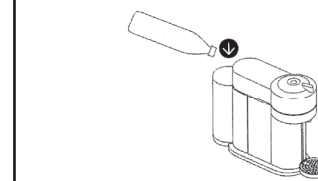


4. Press 3 times

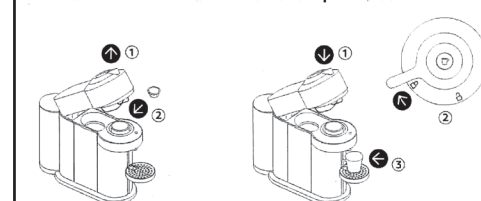
COFFEE PREPARATION



1. Turn on your machine



2. Fill the water tank with fresh potable water



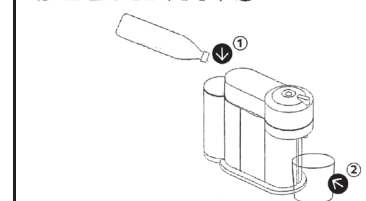
3. Insert a capsule



5. Start brewing

i NOTE: water may accumulate inside the machine's head, please dry visible parts with a clean dry cloth.

CLEANING



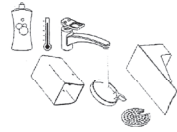
1. Fill the water tank with fresh potable water



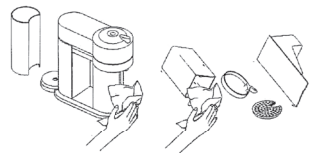
2. Open, close and lock



3. Press the button 3 times within 2 seconds



4. Wash with hot water + mild odourless detergent



5. Dry with a clean and fresh towel

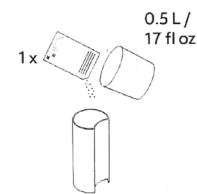
DESCALING



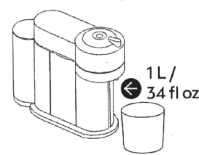
1. Eject capsule



2. Empty capsules and water

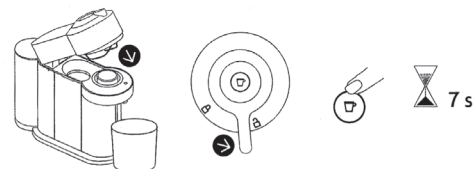


3. Add water + Nespresso descaling agent

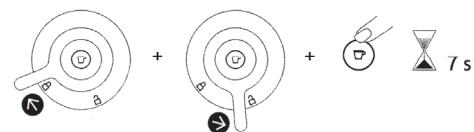


4. Place a container

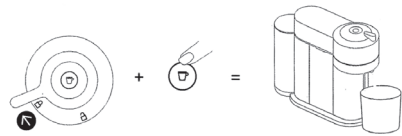
VERTUO / VERTUO NEXT



5. Press and hold the button



6. Lock, unlock and hold the button



7. Lock and press the button

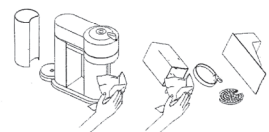


8. Rinse water tank, fill with fresh potable water



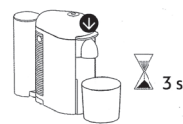
9. Press the button

10. Exit descaling mode 11. Wash with hot water + mild detergent

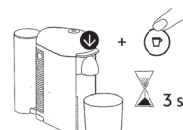


12. Dry with a clean and fresh towel

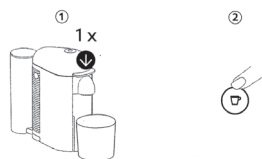
VERTUO PLUS



5. Push the lever down



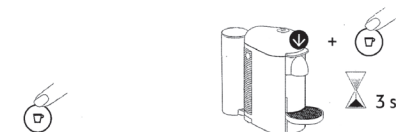
6. Push the lever down and press the button at the same time



7. Push the lever down and press the button to start descaling



8. Rinse water tank, fill with fresh potable water



9. Press the button

10. Exit descaling mode

TROUBLESHOOTING SPECIFICATIONS

VERTUO NEXT / VERTUO PLUS

1 No light on the button.	• The machine has turned OFF automatically; push the button or "UNLOCK" the machine. • Check the mains, plug, voltage, and fuse.
2 No coffee, no water.	• Check that the water tank is filled. • Check that a fresh capsule is inserted in correct position, that the handle is properly locked and push the button to start. • Descal if necessary. • Open the machine head and let the capsule be ejected. Then perform a cleaning as per cleaning section.
3 Coffee is not hot enough.	• Preheat cup with hot drinking water from the tap. • Descal if necessary.
4 Leakage or unusual coffee flow.	• Check that the water tank is well positioned.
5 Machine turns to "OFF mode".	• To save energy the machine will turn off after 2 minutes of non-use. • See paragraph on "Energy Saving Concept".
6 Coffee grounds in the cup.	• Perform the cleaning procedure twice. • See paragraph on "Cleaning".

VERTUO NEXT

7 The machine doesn't start and has light steady on. If blinking, see next points.	• Check that handle is properly locked. • If you want to brew a Coffee or Espresso, check that a fresh capsule is inserted in correct position, that the handle is properly locked and push the button to start. • If you are cleaning, descaling or emptying the system, check that no capsule is inserted then close, lock the machine and push the button to start one of these operations.
8 The machine doesn't start and light blinks alternately; 1 blink and 1 pause.	• Fill the water tank and push button to start. • Check that handle is properly locked.
9 Light blinks while machine is running.	• If coffee is flowing normally, this indicates the machine is working properly. • If only water is flowing, the machine is executing a user request for either cleaning, descaling or emptying the system. Refer to the corresponding paragraph in this user manual. • Turn the machine to "OFF mode" by pushing the button for 3 seconds and then push it again to turn the machine ON. Now wait approximately 20 minutes to allow the machine to cool down after extensive use.

10 Light blinks and machine is not running.	• It will take some time before the coffee flow comes out (due to barcode reading and pre-wetting the coffee). • Check that a fresh capsule is inserted in correct position, that the handle is properly locked and push the button to start. • Fill the water tank and push button to start. • Turn the machine to "OFF mode" by pushing the button for 3 seconds and then push it again to turn the machine ON. Now wait approximately 20 minutes to allow the machine to cool down after extensive use.
---	---

11 Light blinks alternately 2 blinks and 1 pause continuously. Machine is not running.	• During regular Coffee/Espresso preparation: 1) Unlock the handle and open the machine head to check that a fresh undamaged capsule is inserted in the correct position. 2) Check that the handle is in "LOCKED" position. 3) Check that the water tank is filled. • During Descaling, Emptying and Cleaning: 1) Check that capsule is ejected. 2) Check that the handle is in "LOCKED" position. • During Programming Volume: 1) Check if a capsule has been well inserted. 2) Please refer to the corresponding chapter. • If problem persists: 1. Unlock the handle and open machine head. 2. Replace capsule (if needed). 3. Disconnect powercord from the outlet and plug the machine back into outlet after 10 seconds. 4. Close the head and press the button to turn ON and press again to start brewing. If problem persists, call a service center.
--	---

12 Light alternately blinking 3 times and then steady on.	• Descaling needed: machine can be operated when alert appears only a few times after this alert before descaling becomes necessary.
---	--

VERTUO PLUS

7b Coffee leakage.	• Open the machine head and let the capsule be ejected. Then perform a cleaning. • Empty and clean the cup support. • Descal if necessary. • If problem persists, call a service center.
--------------------	---

VERTUO PLUS

~220-240 V, 50 Hz, 1260 W
BR, KR: 220V, 60Hz, 1150W • CN: 220V~, 50Hz, 1150W • MX: 127 V~, 60 Hz, 1520 W
• USA, CA: 120 V, 60 Hz, 1300 W • ~240V, 50Hz: 1380 W / ~230V, 50Hz: 1260 W / ~220V, 50/60Hz, 1160 W

4.6 kg

1.2 L / 1.8 L

Nespresso	Bork	Breville	DeLonghi	KRUPS	Magimix
GCB2, GDB2	-	BNV320, BNV350 BNV420, BNV450	ENV155	XN900	M600

VERTUO NEXT

220-240 V, 50/60 Hz, 1300-1500 W
CN: 220V~, 50Hz, 1300 W • MX: 127 V~, 60 Hz, 1650 W • USA, CA: 120 V, 60 Hz, 1500 --
TW: 110V, 60Hz, 1300W

Frequency: 2.402 - 2.480 GHz -
Max Transmit Power 4dBm**

4 kg

1.1 L

Nespresso	Bork	Breville	DeLonghi	KRUPS	Magimix
GCV1, GDV1	-	BNV520, BNV550 BNV530, BNV560 BNV540, BNV570	ENV120	XN910	-

NOTE: In order to ensure the highest possible standard for refurbished items, all units are thoroughly inspected as part of the process. For this item, water may be used during the refurbishing process and so; you may notice some condensation in the water reservoir. It is recommended to rinse the water reservoir with fresh water prior to its first use.

"NOTE: Accessories may vary depending on the model. The images shown here are for illustrative purposes only and may be subject to change."

REFURBISHED PRODUCT LIMITED THIRTY DAY WARRANTY

The Refurbished Product Service Center offers the following WARRANTY to the ORIGINAL purchaser of a product which we have refurbished.

This product that has been refurbished is warranted against any electronic or mechanical defects for a period of THIRTY DAYS from the date of the original purchase by the consumer. Since this unit was sold as a refurbished item, the warranty does not apply to any cosmetic appearance items such as scratches. Should a defect occur, the Refurbished Product Service Center will repair or, at its option, replace defective unit/parts with new or rebuilt materials without charge for either parts or labor. Replacement unit/parts will be warranted for the remaining portion of the original warranty period.

This warranty does not cover installation or damage from accident, misuse, abuse, improper wiring, incorrect voltage, operating the unit against the instructions in the owner's manual or any product which has been opened, altered, or tampered with.

This warranty does not cover costs for removal and or installation of the unit for repair. Under no circumstances shall the service center be liable for any special, incidental or consequential damages or for any other expenses incurred by reason of use or sale of this product. This warranty is in lieu of any other warranties expressed or implied warranty of merchantability of fitness for particular use or otherwise.

This warranty gives the consumer specific legal rights and they may also have other rights which vary from State to State. Some States do not follow the exclusion or limitation of incidental or consequential damages, hence the above exclusion and limitations may not apply.

Refurbished Product Service Center
13225 Marquardt Avenue Santa Fe Springs, CA 90670



BLINKING SUMMARY

VERTUO NEXT

- 1 No light on the button: Machine OFF > see points 1 & 10*
- 2 Steady white illuminated button: Ready mode
- 3 White regular blinking: once/second: Coffee preparation > see point 6*
- 4 Orange light blinking quickly: twice/second: Cleaning mode > see point 6*
- 5 Orange light blinking rapidly: three times/second: Descaling/Emptying > see point 6*
- 6 White light pulsing up: lighting up to steady ON, then OFF...: Heating up > see point 7*
- 7 Orange light pulsing down: fading to OFF, then ON...: Cooling down after overheating > see point 7*
- 8 Orange light blinking rapidly twice, then long OFF...: Error > see points 7 & 8*
- 9 Orange button ON for 1.5 second, then OFF for 0.5 second...: Water tank is empty > see point 5*
- 10 Orange light blinking 5 times in 10 seconds: Reset to factory settings
- 11 Orange and white light alternately blinking 3 times and then steady on: Descaling alert > see point 11*
- 12 White light blinking twice/second: Software update

VERTUO PLUS

- 1 No light on the button: Machine OFF > see point 1*
- 2 Steady light GREEN: Ready mode
- 3 Regular blinking GREEN: Once/second: Heating up
- 4 Fast rotation GREEN: Coffee preparation
- 5 Blink two times and then back to steady GREEN: Water tank is empty or capsule missing
- 6 Steady light ORANGE: Entering Special Functions menu
- 7 Regular blinking ORANGE: Once/second: Special Function is running
- 8 Blink three times ORANGE within 3 seconds and then back to steady GREEN: Reset to factory settings has been completed

WARRANTY REPAIR INFORMATION

If you need service on your unit during the 30 day warranty period; please go to www.ConsumerServiceRefurbish.com or call the Refurbished Product Service Center at 562-946-3531 to obtain the required claim number. Once you obtain your claim number, pack the unit properly (the original carton is ideal for this purpose) along with a copy of your purchase receipt. Send the unit freight prepaid and insured to:

Refurbished Product Service Center,
Att: Customer Service Department 13225 Marquardt Avenue Santa Fe Springs, CA 90670

Your unit will be promptly exchanged and returned to you. We will refuse to accept delivery of the returned unit unless the assigned claim number appears on the outside of the shipping carton.

Owner's Information
(Keep for your permanent records)

NAME: _____
ADDRESS: _____
CITY: _____
STATE: _____
ZIP CODE: _____
PHONE: _____
E-MAIL: _____
MODEL: _____
SERIAL NO.: _____