



# MultiQuick 7

“Recipe book is not included”

## IMPORTANT SAFEGUARDS

When using electrical appliances, basic safety precautions should always be followed to reduce the risk of fire, electric shock and/or injury to persons, including the following:

### READ ALL INSTRUCTIONS.

1. **Blades are sharp. Handle carefully when removing, inserting or cleaning. Exercise the same care when removing, inserting the chopping blade or disc for the food processor and chopper accessories. Always verify that the accessory enclosure is free of cracks or other damages.**
2. The appliance is not intended for use by persons with reduced physical, sensory or mental capabilities, or lack of experience and knowledge, unless they have been given supervision or instructions concerning use of the appliance by a person responsible for their safety.
3. This appliance should not be used by children and care should be taken when used near children.
4. Remove any packaging materials and promotional labels before using the appliance for the first time.
5. Turn the appliance off. Unplug from outlet when not in use, before putting on or taking off parts, and before cleaning. To unplug, grasp plug and pull from electrical outlet. Never pull cord.
6. To protect against electrical shock, do not put the motor body, cord or electrical plug of this hand blender in water or other liquids. Only the detachable blending shaft and other certain parts of this appliance have been designed for immersion into water or other liquids. Never submerge any other part of this unit. If hand blender falls into liquid, unplug first, then remove immediately. Do not reach into the liquid without unplugging the unit first.
7. The use of attachments/accessories not sold or recommended by Braun may cause fire, electrical shock or risk of injuries to persons.
8. Regularly inspect the power cord, power plug and actual appliance for any damage. Do not operate if damaged in any way or after the appliance malfunctions. Immediately cease use of the appliance and contact a service center.
9. Avoid any contact with blades or moveable parts.
10. Do not use outdoors or for anything other than its intended purpose.
11. Keep hands and utensils out of the container while blending to prevent the possibility of severe injury to persons or damage to the unit. A scraper may be used, but must be used only when the unit is not running.
12. Detach blending shaft from the motor body before washing the blades or shaft.
13. When mixing liquids, especially hot liquids, use a tall container or make small quantities at a time to reduce spillage, splattering and possibility of injury from burning.
14. The metal blending shaft and whisk may scratch or mark non-stick coatings. Do not use in non-stick cookware.
15. Be certain the food processor attachment cover is securely locked in place before operating appliance. Do not attempt to remove cover until blade has stopped rotating.
16. Check work bowl for presence of foreign objects before using.
17. Do not let any cord hang over the edge of the table or counter. Do not let cord contact hot surfaces, including stovetop.
18. Maximum rating is based on the «bf» chopper (MQ 20 chopper + adapter) that draws the greatest power and other recommended attachments may draw significantly less power.
19. The «bf» chopper is intended for processing small quantities of food for immediate consumption, and is especially recommended for preparing baby food. The appliance is not intended to prepare large quantities of food at one time.
20. Double-blade knife is sharp. Handle carefully. Use extreme care when removing or replacing knife blade.
21. Bowl must be in place before replacing knife blades.
22. Do not operate your appliance in an appliance garage or under a wall cabinet.
23. We suggest you save all packing materials in the event that future shipping of the machine is needed. Keep all plastic bags away from children.
24. This appliance has a polarized plug (one blade is wider than the other). To reduce the risk of electric shock, this plug will fit in a polarized outlet only one way. If the plug does not fit fully in the outlet, reverse the plug. If it still does not fit, contact a qualified electrician.  
Do not modify the plug in any way.

## SAVE THESE INSTRUCTIONS

FOR HOUSEHOLD USE ONLY

WARNING: RISK OF FIRE OR ELECTRIC SHOCK

### Before Use

Please read the user instructions carefully and completely before using the appliance and retain for future reference. Remove all packaging and labels and dispose them appropriately.

### Parts and Accessories

- 1 Smartspeed switch / variable speeds
- 2 Motor part
- 3 EasyClick Plus release buttons
- 4 ActiveBlade shaft
- 5 Beaker
- 6 Whisk accessory
  - a Whisk

Clean all parts before using for the first time – refer to «Care and Cleaning».

### How to Use the Appliance

#### Smartspeed Switch for Variable Speeds

One squeeze, all speeds. The more you press, the higher the speed. The higher the speed, the faster and finer the blending and chopping results.

One handed operation: the Smartspeed switch (1) allows you to turn on the appliance and control the speed with one hand.

#### ActiveBlade Shaft

The hand blender is equipped with an ActiveBlade shaft, which enables the knife extend to the bottom of the bell. The adjustment is made automatically by pressure required in blending tasks, especially suited to mix hard foods e.g raw fruits and vegetables.

It is also perfectly suited for preparing dips, sauces, salad dressings, soups, baby food, as well as drinks, smoothies and milkshakes.

For best results, use the highest speed.

#### Assembly and Operation

- Attach the ActiveBlade shaft (4) to the motor part until it clicks.
- Place the ActiveBlade shaft into the mixture to be blended. Then switch the appliance on as described above.
- Blend ingredients to the desired consistency using a gentle up-and-down motion. Depending on the pressure applied, the ActiveBlade shaft will depress and blade will extend.
- After use, unplug the hand blender and press the EasyClick Plus release buttons (3) to detach the ActiveBlade shaft.

#### Caution

- Do not let liquids or ingredients overlap the green line of the ActiveBlade shaft.
- If using the appliance to purée hot food in a saucepan or pot, remove the saucepan or pot from the heat source and ensure the liquid is not boiling. Allow hot food to cool slightly to avoid risk of scalding.
- Do not let the hand blender sit in a hot pan on the cooktop when not in use.
- Do not scratch the ActiveBlade shaft over the bottom of pans and pots.

#### Recipe Example: Green Pesto

- 1/2 garlic clove
- 0.25 cups / 25 g Parmesan cheese
- 0.5 cups / 20 g pine nuts
- 0.5 cups / 50 ml Olive oil
- 0.25 cups / 25 g dried tomatoes
- 2 cups / 20 g basil
- Salt and pepper to taste

- Place all ingredients into the beaker in the order as above.
- Place the hand blender at the bottom of the beaker. Blend at highest speed until the desired consistency is achieved.

### Whisk Accessory

Use the whisk only for whipping cream, beating egg whites, making sponge cakes and ready-mix desserts.

#### Assembly and Operation

- Attach the whisk (6b) to the gearbox (6a).
- Align the motor part with the assembled whisk accessory and push the pieces together until they click.
- After use, unplug and press the EasyClick Plus release buttons to detach the motor part. Then pull the whisk out of the gearbox.

#### Tips for Best Results

- Move the whisk clockwise while holding it at a slight incline.
- To prevent splattering, start slowly and use the whisk accessory in deep containers or pans.
- Place the whisk in a bowl and only then switch the appliance on.
- Always ensure the whisk and mixing bowl are completely clean and free of fat before whisking egg whites. Only whip up to 4 egg whites.

#### Recipe Example: Whipped Cream

1.8 cups / 400 ml chilled cream (min. 30% fat content, 4 - 8 °C / 39 - 46F)

- Start with low speed (light pressure on the switch) and increase the speed (more pressure on switch) while whipping.
- Always use fresh chilled cream to achieve greater and more stable volume when whisking.

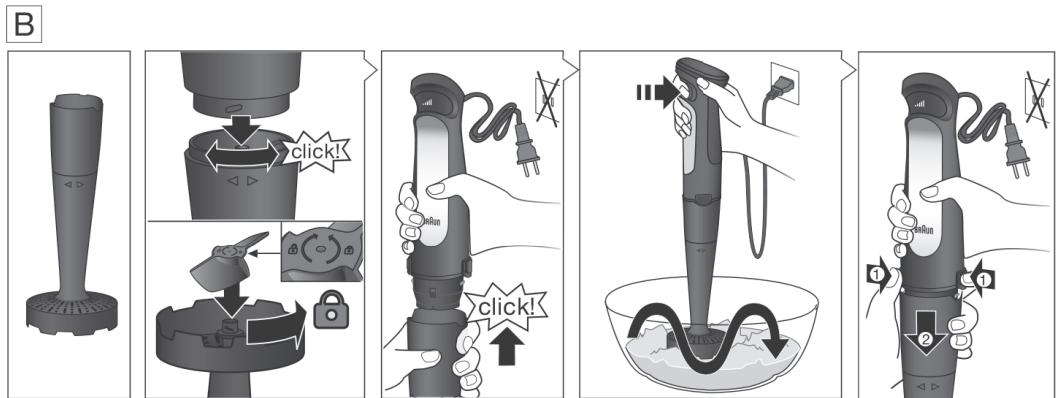
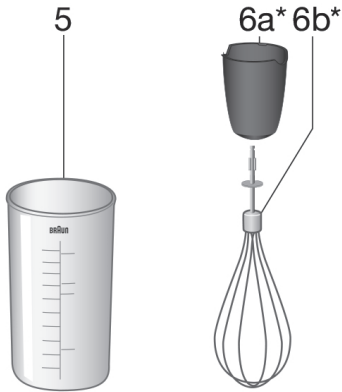
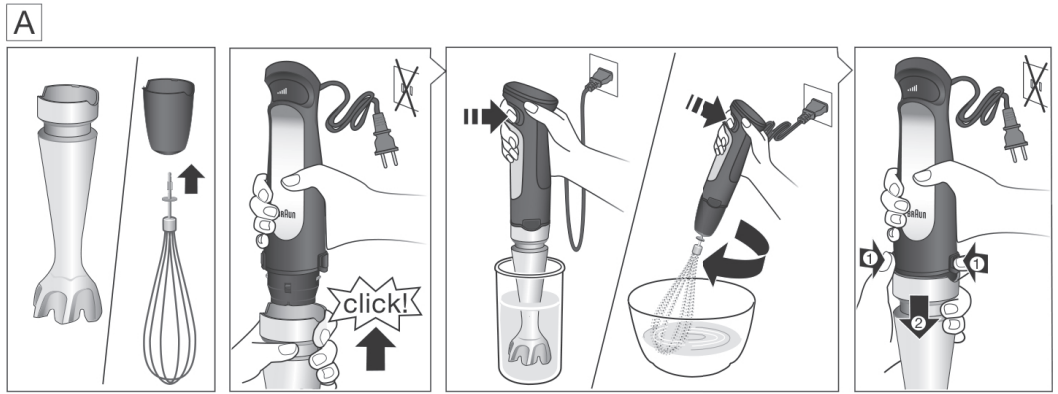
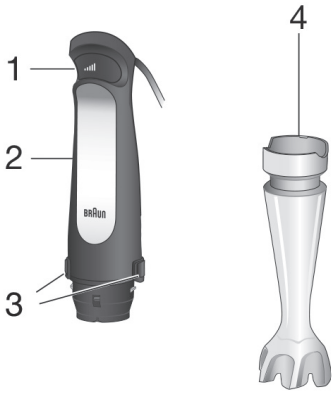
### Care and Cleaning

- Always clean the hand blender and the suitable accessories thoroughly for first use and after every use with water and detergent.
- Unplug hand blender before cleaning.
- Do not immerse the motor part (2) or gearboxes (6a) in water or any other liquid. Clean with a damp cloth only.
- Do not immerse in water, nor place in a dishwasher.
- All other parts can be cleaned in a dishwasher. Do not use abrasive cleaners that could scratch the surface.
- You may remove the anti-slip rubber rings from the bottom of the bowls for an extra thorough clean.
- When processing foods with high pigment content (e.g. carrots or curcuma), the accessories may become discolored. Wipe these parts with vegetable oil before cleaning them.

Both the design specifications and these user instructions are subject to change without notice.

### Troubleshooting Guide

Problem
Hand blender does not operate.
Potential Causes
No power
Solution
Check appliance is plugged in. Check the fuse /circuit breaker in your home.



NOTE: Accessories may vary depending on the model.

NOTE: The images shown here are for illustrative purposes. Accessory type and quality may vary depending on the model.

## REFURBISHED PRODUCT LIMITED THIRTY DAY WARRANTY

The **Refurbished Product Service Center** offers the following WARRANTY to the ORIGINAL purchaser of a product which we have refurbished.

This product that has been refurbished is warranted against any electronic or mechanical defects for a period of THIRTY DAYS from the date of the original purchase by the consumer. Since this unit was sold as a refurbished item, the warranty does not apply to any cosmetic appearance items such as scratches. Should a defect occur, the **Refurbished Product Service Center** will repair or, at its option, replace defective unit/parts with new or rebuilt materials without charge for either parts or labor. Replacement unit/parts will be warranted for the remaining portion of the original warranty period.

This warranty does not cover installation or damage from accident, misuse, abuse, improper wiring, incorrect voltage, operating the unit against the instructions in the owner's manual or any product which has been opened, altered, or tampered with.

This warranty does not cover costs for removal and or installation of the unit for repair. Under no circumstances shall the service center be liable for any special, incidental or consequential damages or for any other expenses incurred by reason of use or sale of this product. This warranty is in lieu of any other warranties expressed or implied warranty of merchantability of fitness for particular use or otherwise.

This warranty gives the consumer specific legal rights and they may also have other rights which vary from State to State. Some States do not follow the exclusion or limitation of incidental or consequential damages, hence the above exclusion and limitations may not apply.

**Refurbished Product Service Center**  
13225 Marquardt Avenue Santa Fe Springs, CA 90670

## WARRANTY REPAIR INFORMATION

If you need service on your unit during the 30 day warranty period; please go to [www.ConsumerServiceRefurbish.com](http://www.ConsumerServiceRefurbish.com) or call the Refurbished Product Service Center at 562-946-3531 to obtain the required claim number. Once you obtain your claim number, pack the unit properly (the original carton is ideal for this purpose) along with a copy of your purchase receipt.

Send the unit freight prepaid and insured to:

**Refurbished Product Service Center,**  
**Att: Customer Service Department 13225 Marquardt Avenue Santa Fe Springs, CA 90670**

Your unit will be promptly exchanged and returned to you.

We will refuse to accept delivery of the returned unit unless the assigned claim number appears on the outside of the shipping carton.

### Owner's Information

(Keep for your permanent records)

NAME: \_\_\_\_\_

ADDRESS: \_\_\_\_\_

CITY: \_\_\_\_\_

STATE: \_\_\_\_\_

ZIP CODE: \_\_\_\_\_

PHONE: \_\_\_\_\_

E-MAIL: \_\_\_\_\_

MODEL: \_\_\_\_\_

SERIAL NO.: \_\_\_\_\_

