

Please be sure to read the enclosed Owner's Guide prior to using your unit.

804008822

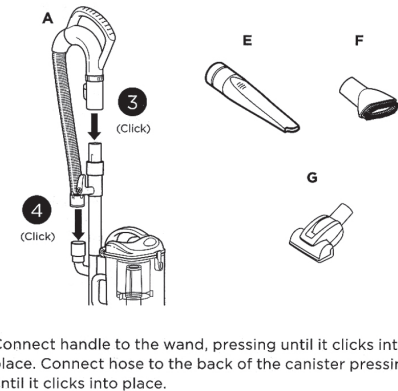
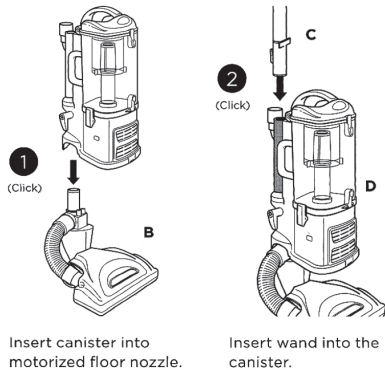
Shark Navigator™ LIFT-AWAY® PRO

QUICK START GUIDE

WHAT'S INSIDE

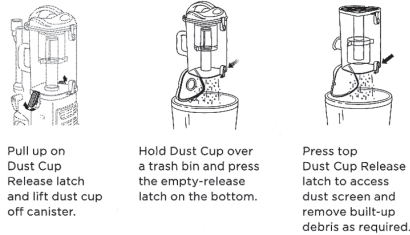
- A** Handle with Stretch Hose
- B** Floor Nozzle
- C** Extension Wand
- D** Portable Lift-Away® Canister
- E** Crevice Tool
- F** Dusting Brush
- G** Pet Power Brush

ASSEMBLY

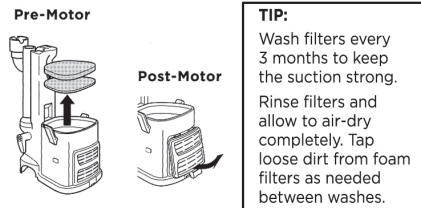


MAINTENANCE

Empty dust cup after each use



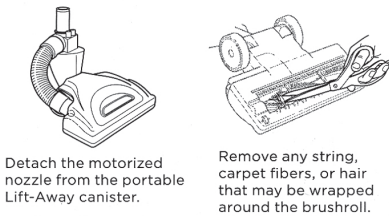
Cleaning Filters



Pre-Motor (foam and felt):
With the dust cup removed, take out and rinse the foam and felt filters with water only.

Post-Motor (HEPA):
To access the HEPA filter, reach under the grill and pull the Filter Access latch to remove the grill. Remove and rinse the HEPA filter with water only. Let all filters air-dry completely before reinstalling.

Easy brushroll maintenance



Note: The images shown here are for illustrative purpose only and may vary.

Please be sure to read the enclosed Owner's Guide prior to using your unit.

804008822

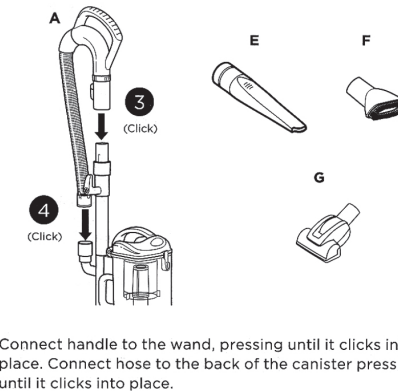
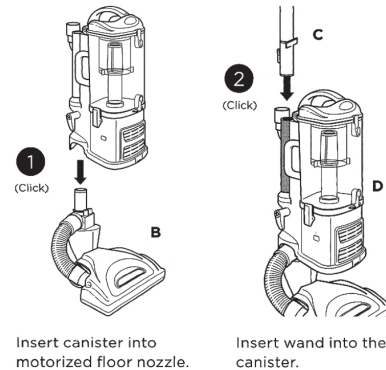
Shark Navigator™ LIFT-AWAY® PRO

QUICK START GUIDE

WHAT'S INSIDE

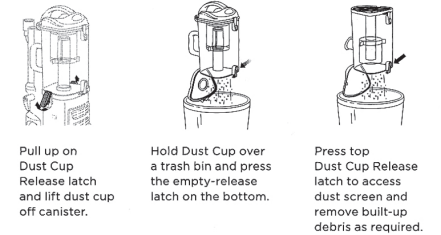
- A** Handle with Stretch Hose
- B** Floor Nozzle
- C** Extension Wand
- D** Portable Lift-Away® Canister
- E** Crevice Tool
- F** Dusting Brush
- G** Pet Power Brush

ASSEMBLY

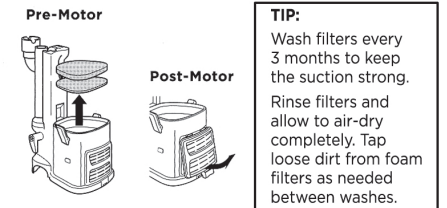


MAINTENANCE

Empty dust cup after each use



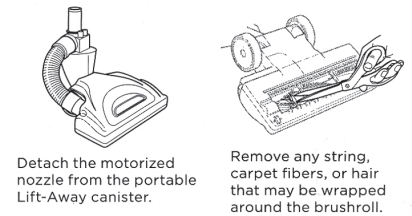
Cleaning Filters



Pre-Motor (foam and felt):
With the dust cup removed, take out and rinse the foam and felt filters with water only.

Post-Motor (HEPA):
To access the HEPA filter, reach under the grill and pull the Filter Access latch to remove the grill. Remove and rinse the HEPA filter with water only. Let all filters air-dry completely before reinstalling.

Easy brushroll maintenance



Note: The images shown here are for illustrative purpose only and may vary.

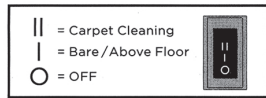
VERSATILE FLOOR-TO-CEILING CLEANING

FLOOR CLEANING

- 1 Plug In Vacuum**
Then place your foot gently on the floor nozzle and tilt the handle back.



- 2 Choose Setting**
Slide the power switch to the appropriate floor setting and start cleaning.

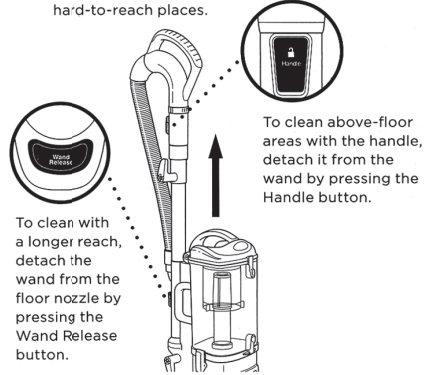


BRUSHROLL ON/OFF:

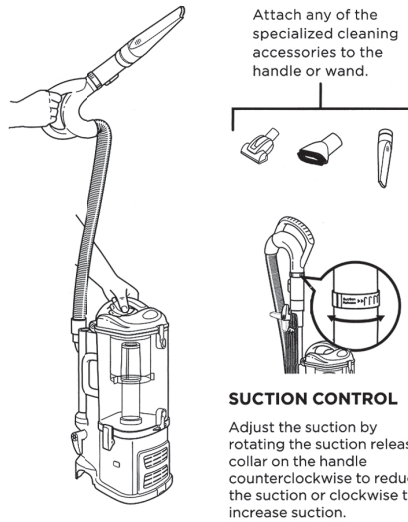
- Press the ON/OFF switch at the top of the canister to the I position to vacuum bare floors (straight suction only) or use Lift-Away® mode. To vacuum carpets and rugs, set the switch to the II position to engage the motorized brushroll.
- Press the floor nozzle down with your foot and tilt the handle back towards you to engage the brushroll.

PORTABLE LIFT-AWAY® MODE

- 1 Plug In Vacuum**
Press Lift-Away button to lift canister off floor nozzle. You are now ready to clean those hard-to-reach places.



- 2 Attach desired cleaning accessory.**



Note: Accessories may vary depending on the model

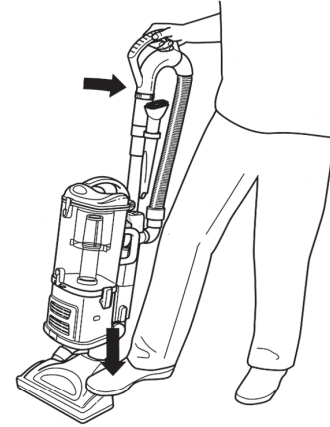


PRINTED IN MEXICO Elbrd: J.E.
OBPN: N/A
SC: 04-17-2019_1P MODEL: NV370_B

VERSATILE FLOOR-TO-CEILING CLEANING

FLOOR CLEANING

- 1 Plug In Vacuum**
Then place your foot gently on the floor nozzle and tilt the handle back.



- 2 Choose Setting**
Slide the power switch to the appropriate floor setting and start cleaning.

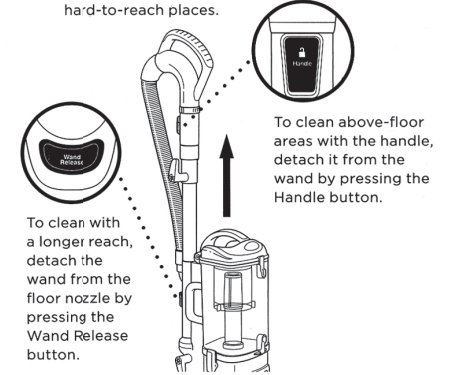


BRUSHROLL ON/OFF:

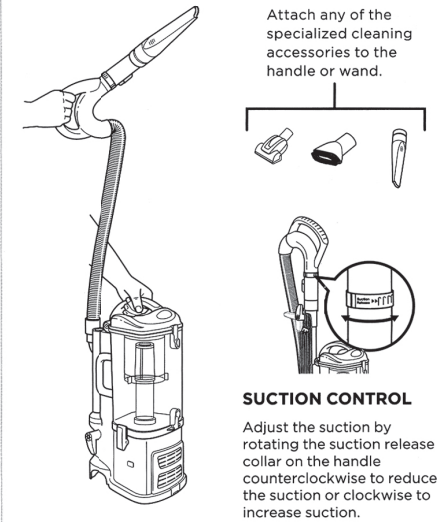
- Press the ON/OFF switch at the top of the canister to the I position to vacuum bare floors (straight suction only) or use Lift-Away® mode. To vacuum carpets and rugs, set the switch to the II position to engage the motorized brushroll.
- Press the floor nozzle down with your foot and tilt the handle back towards you to engage the brushroll.

PORTABLE LIFT-AWAY® MODE

- 1 Plug In Vacuum**
Press Lift-Away button to lift canister off floor nozzle. You are now ready to clean those hard-to-reach places.



- 2 Attach desired cleaning accessory.**



Note: Accessories may vary depending on the model



PRINTED IN MEXICO Elbrd: J.E.
OBPN: N/A
SC: 04-17-2019_1P MODEL: NV370_B