

REFURBISHED PRODUCT LIMITED THIRTY DAY WARRANTY

The **Refurbished Product Service Center** offers the following WARRANTY to the ORIGINAL purchaser of a product which we have refurbished.

This product that has been refurbished is warranted against any electronic or mechanical defects for a period of THIRTY DAYS from the date of the original purchase by the consumer. Since this unit was sold as a refurbished item, the warranty does not apply to any cosmetic appearance items such as scratches. Should a defect occur, the **Refurbished Product Service Center** will repair or, at its option, replace defective unit/parts with new or rebuilt materials without charge for either parts or labor. Replacement unit/parts will be warranted for the remaining portion of the original warranty period.

This warranty does not cover installation or damage from accident, misuse, abuse, improper wiring, incorrect voltage, operating the unit against the instructions in the owner's manual or any product which has been opened, altered, or tampered with.

This warranty does not cover costs for removal and/or installation of the unit for repair. Under no circumstances shall the service center be liable for any special, incidental or consequential damages or for any other expenses incurred by reason of use or sale of this product. This warranty is in lieu of any other warranties expressed or implied warranty of merchantability or fitness for particular use or otherwise.

This warranty gives the consumer specific legal rights and they may also have other rights which vary from State to State. Some States do not follow the exclusion or limitation of incidental or consequential damages, hence the above exclusion and limitations may not apply.

Refurbished Product Service Center
13225 Marquardt Avenue Santa Fe Springs, CA 90670

WARRANTY REPAIR INFORMATION

If you need service on your unit during the 30 day warranty period; please go to www.ConsumerServiceRefurbish.com or call the Refurbished Product Service Center at 562-946-3531 to obtain the required claim number. Once you obtain your claim number, pack the unit properly (the original carton is ideal for this purpose) along with a copy of your purchase receipt.

Send the unit freight prepaid and insured to:

Refurbished Product Service Center,
Att: Customer Service Department 13225
Marquardt Avenue Santa Fe Springs, CA
90670

Your unit will be promptly exchanged and returned to you.

We will refuse to accept delivery of the returned unit unless the assigned claim number appears on the outside of the shipping carton.

Owner's Information (Keep for your permanent records)

NAME: _____

ADDRESS: _____

CITY: _____ STATE: _____

ZIP CODE: _____ PHONE: _____

E-MAIL: _____

MODEL: _____

SERIAL NO.: _____

TOSHIBA

Portable Type Room Air Conditioner

User Manual
804106510

Warning notice: Before using this product, please read this manual carefully and keep it for future reference.

The design and specifications are subject to change without prior notice for product improvement.

SAFETY PRECAUTIONS

To prevent injury to the user or other people and property damage, the instructions shown here must be followed. Incorrect operation due to ignoring of instructions may cause harm or damage. The level of risk is shown by the following indications.

WARNING This symbol indicates a hazardous situation which, if not avoided, could result in death or serious injury.

CAUTION This symbol indicates a hazardous situation, which, if not avoided, could result in minor or moderate injury.

NOTICE This symbol addresses practices not related to physical injury.

- WARNING**
 - Be sure the air conditioner has been securely and correctly installed according to the installation instructions in this manual. Save this manual for possible future use in removing or installing this unit.
 - Plug in power cord plug properly. Otherwise, it may cause electric shock or fire due to excess heat generation.
 - Do not modify power cord length or share the outlet with other appliances as it may cause electric shock or fire due to overheating.
 - Always ensure effective grounding. Incorrect grounding may cause electric shock.
 - Unplug the unit if you notice unusual sounds or smells or smoke coming from it.
 - A damaged product may cause fire and electric shock.
 - Ventilate room before operating the air conditioner if there is a gas leakage from another appliance.
 - Do not operate or stop the unit by inserting or pulling out the power cord plug.
 - Do not operate with wet hands or in very humid environments. It may cause electric shock.
 - Do not allow water to come into contact with any electric parts. It may cause failure or electric shock.
 - Do not use the socket if it is loose or damaged. It may cause fire and electric shock.
 - Do not use or keep the power cord close to heating appliances.
 - Do not use fire and electric shock.
 - Do not use any devices or materials for installation that are not recommended in this manual.
 - Do not disassemble or modify unit. It may cause failure and electric shock.
- WARNING**
 - Do not damage or use an alternate power cord. It may cause fire and electric shock. If the power cord is damaged, it must be replaced by the manufacturer in order to avoid a hazard.
 - Do not direct airflow straight into persons to avoid possible health hazard.
 - Do not open the unit during operation. It may cause electric shock.
 - Do not use the power cord near flammable gas or combustibles, such as gasoline, benzene, thinner, etc. It may cause an explosion or fire.
 - Do not let children on the air conditioner. A serious injury may occur.
 - Avoid fire hazard or electric shock. Do not use an extension cord or an adaptor plug. Do not remove any prongs from the power cord.
 - Be sure the air conditioner is properly grounded. To minimize shock and fire hazards, proper grounding is important. The power cord is equipped with a three-prong grounding plug for protection against shock hazards.
 - Your air conditioner must be used in a properly grounded wall receptacle. If the wall receptacle you intend to use is not adequately grounded or protected by a time delay fuse or circuit breaker, have a qualified electrician install the proper receptacle. Ensure the receptacle is accessible after the unit installation.
 - Be sure the electrical service is adequate for the model you have chosen. This information can be found on the serial plate, which is located on the side of the cabinet and behind the grille.

- WARNING**
 - When the air filter is to be removed, do not touch the metal parts of the unit. It may cause injury.
 - Always unplug the unit before cleaning.
 - Do not clean unit when power is on as it may cause fire, electric shock or injury.
 - Do not place obstacles around air inlets or inside of air outlet. It may cause failure or accident.
 - Clean with a soft cloth only. Do not use strong detergents that contain wax or thinners as it may damage the product.
 - Use caution when unpacking and installing. Sharp edges could cause injury.
 - Do not clean the air conditioner with water.
 - Water may enter the unit and degrade the insulation which could lead to electric shock.
- CAUTION**
 - Hold the plug by the head of the power plug when taking it out. Otherwise, it may cause electric shock and damage.
 - Ensure that the installation is properly secured to prevent the product from potentially falling.
 - Do not place heavy objects on the power cord and ensure that the cord is not compressed. Otherwise, there is danger of fire or electric shock.
 - If water is spilled on the unit, turn off the unit and switch off the circuit breaker. Isolate the unit by taking the power plug out and contact customer service.
 - Do not use near gas stove or other gas burning appliances, as air flow may affect gas combustion.
 - Do not use for any purpose other than room comfort. Do not use this air conditioner to preserve precision devices, food, pets, plants, and art objects. It may cause deterioration.
 - Turn off the main power switch if the unit is not to be used for an extended time.
 - Always insert the filters securely. Clean filter once every two weeks. Operation without filters may cause failure.
 - Do not drink water drained from the air conditioner.

- CAUTION**
 - Hold the plug by the head of the power plug when taking it out. Otherwise, it may cause electric shock and damage.
 - Ensure that the installation is properly secured to prevent the product from potentially falling.
 - Do not place heavy objects on the power cord and ensure that the cord is not compressed. Otherwise, there is danger of fire or electric shock.
 - If water is spilled on the unit, turn off the unit and switch off the circuit breaker. Isolate the unit by taking the power plug out and contact customer service.
 - Do not use near gas stove or other gas burning appliances, as air flow may affect gas combustion.
 - Do not use for any purpose other than room comfort. Do not use this air conditioner to preserve precision devices, food, pets, plants, and art objects. It may cause deterioration.
 - Turn off the main power switch if the unit is not to be used for an extended time.
 - Always insert the filters securely. Clean filter once every two weeks. Operation without filters may cause failure.
 - Do not drink water drained from the air conditioner.

CAUTION Hold the plug by the head of the power plug when taking it out. Otherwise, it may cause electric shock and damage.

- Ensure that the installation is properly secured to prevent the product from potentially falling.
- Do not place heavy objects on the power cord and ensure that the cord is not compressed. Otherwise, there is danger of fire or electric shock.
- If water is spilled on the unit, turn off the unit and switch off the circuit breaker. Isolate the unit by taking the power plug out and contact customer service.
- Do not use near gas stove or other gas burning appliances, as air flow may affect gas combustion.
- Do not use for any purpose other than room comfort. Do not use this air conditioner to preserve precision devices, food, pets, plants, and art objects. It may cause deterioration.
- Turn off the main power switch if the unit is not to be used for an extended time.
- Always insert the filters securely. Clean filter once every two weeks. Operation without filters may cause failure.
- Do not drink water drained from the air conditioner.

WARNING Caution: Risk of fire/flammable materials (Required for R32/R290 units only)



IMPORTANT NOTE: Read this manual carefully before installing or operating your new air conditioning unit. Make sure to save this manual for future reference.

EXPLANATION OF SYMBOLS DISPLAYED ON THE UNIT

	WARNING	This symbol shows that this appliance used a flammable refrigerant. If the refrigerant is leaked and exposed to an external ignition source, there is a risk of fire.
	CAUTION	This symbol shows that the operation manual should be read carefully.
	CAUTION	This symbol shows that a service personnel should be handling this equipment with reference to the installation manual.
	CAUTION	This symbol shows that information is available such as the operating manual or installation manual.

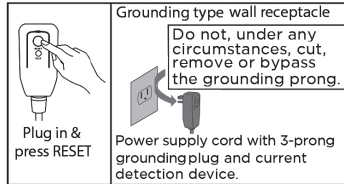
WARNING (for using R32 refrigerant only)

- Do not try to accelerate the defrosting process or methods of cleaning that are not recommended by the manufacturer.
- The appliance shall be stored in a room without a continuously operating ignition source (for example, open flames or an operating gas appliance) or an ignition source (for example, an operating electric heater) close to the appliance. The appliance shall also be stored in a room without ignition sources.
- Do not pierce or burn.
- Be aware that the refrigerants may not contain an odor.
- Keep ventilation openings clear of obstruction.
- Flammable refrigerant R32 is used within air conditioner. Please follow the instructions carefully to handle, install, clean, and service the air conditioner to avoid damage or hazard. Do not dispose of air conditioner in regular trash. Contact qualified agency for proper disposal.
- No open fire or devices that generate spark/arcing shall be around the air conditioner to avoid causing ignition of the flammable refrigerant used. Please follow the instructions carefully to store or maintain the air conditioner to prevent mechanical damage from occurring.

Operation of Current Device

The power supply cord contains a current measuring device that detects damage to the power cord. Test your power supply cord as follows:

- Plug in the air conditioner.
- The power supply cord will have TWO buttons on the plug head. Press the TEST button. You will notice a click as the RESET button pops out.
- Press the RESET Button. You will notice a click as the button engages.
- The power supply cord is now supplying electricity to the unit. (On some products this is also indicated by a light on the plug head.)



NOTICE

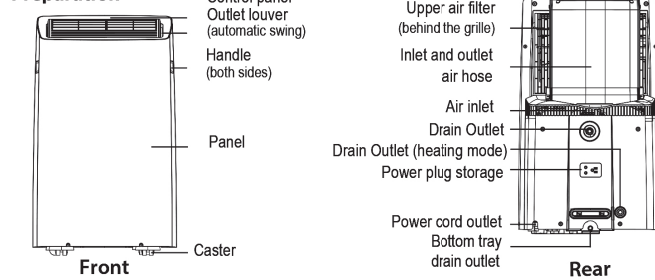
The power supply cord with this air conditioner contains a current detection device designed to reduce the risk of fire. In the event that the power supply cord is damaged, it can not be repaired. It must be replaced with a cord from the manufacturer.

NOTICE

- Do not use this device to turn the unit on or off.
- Always make sure the RESET button is pushed in for correct operation.
- The power supply cord must be replaced if it fails to reset when either the TEST button is pushed, or it can not be reset. Please contact Customer Service.

OPERATING INSTRUCTIONS

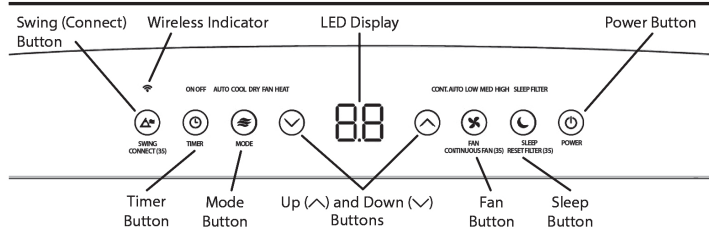
Preparation



Unit Operating Temperature Range:

Mode	Temperature Range
Cool	60°F ~ 95°F (16°C ~ 35°C)
Dry	55°F ~ 95°F (13°C ~ 35°C)
Heat Pump	41°F ~ 86°F (5°C ~ 30°C)

Control Panel Features



Swing Button

Used to initiate the Auto Swing feature. When the operation is ON, pressing the SWING button can stop the louver at the desired angle.

Timer button

Used to initiate the AUTO ON start time and AUTO OFF stop time program. The timer on or off light will illuminate depending on the selected setting.

Note: The image shown here is for illustrative purposes only and may be subject to change. The actual descriptions of control panel and their locations may vary, depending on the model.

Connect Button

Also used to initiate the wireless connection mode. To initiate the wireless connection mode, power on the air conditioner then press the SWING button for 3 seconds. The LED DISPLAY will show 'AP' to indicate the unit is in wireless connection mode. Refer to the app connection instructions to finish the connection process.

If the connection is successful, the unit will exit wireless connection mode and illuminate the wireless LED. If the connection fails, the unit will exit wireless connection mode automatically after 8 minutes and the wireless LED does not illuminate. Note: The wireless connection process must be completed within 8 minutes after powering the air conditioner on.

Fan button

Controls the fan speed. Press to control the fan speed in four steps - LOW, MID, HIGH and AUTO. The selected fan speed light will illuminate.

NOTE: Applicable to models with the Constant Fan feature. In COOL or DRY mode, press the Fan button for 3 seconds to turn on or off the constant fan function. When the function is turned on, the constant fan light will illuminate, indicating the fan will run constantly, independent of compressor operation.

When the function is turned off, the constant fan light will go out, indicating that the fan will stop when the compressor stops.

Mode button

Selects the desired operating mode. Each time you press the button, a mode is selected in a sequence that goes from AUTO, COOL, DRY, FAN and HEAT (cooling only models excluded). The mode light illuminates and indicates the selected mode.

Up (^) and Down (v) buttons

Used to increase/decrease temperature settings in 1° increments in a range of 60°F/16°C to 86°F/30°C or the TIMER setting in a range of 0 ~ 24hrs.

To change between °F or °C, simultaneously press and hold the Up and Down buttons for 3 seconds.

Power button

Power switch on/off.

Sleep button

Press SLEEP button to initiate the SLEEP operation and the sleep light illuminates. Press SLEEP button again to stop the SLEEP operation and the sleep light turns dark. Press SLEEP button for 3 seconds to initiate the filter feature. This feature is a reminder to clean the Air Filter for more efficient operation. The LED (the light above the button) will illuminate after 250 hours of operation.

LED display

Shows the set temperature in °F (Degrees Fahrenheit) or °C (Degrees Celsius) and the Auto-timer settings. While on FAN modes, it shows the room temperature.

Shows Error codes and protection code: The unit may stop operation or continue to run safely. If the error codes appear, wait for about 10 minutes. The problem may resolve itself. If not, disconnect the power, then connect it again. Turn the unit on. If the problem persists, disconnect the power and contact a service center.

Error code appears and begins with the letters as the following in the window display of indoor unit: EH(xx), EL(xx), EC(xx), PH(xx), PL(xx), PC(xx)

P1 - Bottom tray is full - Connect the drain hose and drain the collected water away. If protection code repeats, contact a service center.

NOTICE

When one of these error codes occurs, turn off the unit and check for any obstructions. Restart the Unit. If the malfunction persists, turn off the unit and unplug the power cord and contact a service center.

Operating Instructions

AUTO operation

- When you set the air conditioner to AUTO mode, it will automatically select cooling, heating or fan only operation depending on what temperature you have selected and the current room temperature.
- The air conditioner will control room temperature automatically according to the temperature point set by you.
- Under AUTO mode, you cannot select the fan speed.

COOL operation

- Press the "MODE" button until the "COOL" indicator light comes on.
- Press the ADJUST buttons Up (^) or Down (v) to select your desired room temperature. The temperature can be set within a range of 60°F~86°F/16°C~30°C.
- Press the "FAN SPEED" button to choose the fan speed.

HEAT operation

- Press the "MODE" button until the Heat indicator light comes on.
- Press the ADJUST buttons Up (^) or Down (v) to select your desired room temperature. The temperature can be set within a range of 60°F~86°F/16°C~30°C.
- Press the "FAN SPEED" button to choose the fan speed.
- When entering heat mode, the fan may start slower than expected. This is normal operation to allow the unit to begin heating effectively. After a few minutes the unit should reach your desired fan speed.

DRY operation

- Press the "MODE" button until the "DRY" indicator light comes on.
- While in this mode, you cannot select a fan speed or adjust the temperature. The fan motor operates at LOW speed.
- Keep windows and doors closed for the best dehumidifying effect.

SLEEP operation

Pressing this button will increase (during cooling operation) or decrease (during heating operation, applicable models) 2°F/1°C after 30 minutes. The temperature will again increase (cooling) or decrease (heating) by another 2°F/1°C after an additional 30 minutes. This new temperature will be maintained for 7 hours before returning to the originally selected temperature. This ends the Sleep mode and the unit will continue to operate as originally programmed.

NOTICE

The SLEEP operation feature is unavailable in FAN or DRY mode.

Tools Needed (Not included)

- Phillips screwdriver
- Tape measure or ruler
- Knife or scissors
- Saw (optional, to shorten window adaptor for narrow windows).

Accessories

Your Window Installation Kit fits windows 19.4" - 60"

Part	Description	Part	Description
	Air exhaust adapter		Foam seal A / B (adhesive)
	Bolt or Screw		Drain hose
	Window Sliders		Foam seal C (Non-adhesive)
	Sliding Window Adapter - Front		Security bracket and 2 screws
	Sliding Window Adapter - Rear		1 Screw (on Exhaust adaptor)
	Sliding Window Adapter - Air Divider		Remote controller

Note: Accessory type, appearance and quantity may vary depending on the model.

Other Features

COMFORT SENSE feature

This feature can ONLY be activated from the remote control. The remote control serves as a remote thermostat allowing for the precise temperature control at its location, which must be within 26 feet of the air conditioner. To activate the Comfort Sense feature, point the remote control towards the unit and press the set button to select. The remote's display will show the actual temperature at its location (as long as it is within the 26 feet of the air conditioner). The remote control will send this signal to the air conditioner every 3 minutes until the C-Sense function is selected again. If the unit does not receive the Comfort Sense signal during any 7 minutes interval, the unit will exit the Comfort Sense mode.

NOTE: This feature is unavailable under FAN or DRY mode.

AUTO-RESTART

If the unit shuts off unexpectedly due to a power outage, it will restart with the previously set function automatically when the power resumes.

WAIT 3 MINUTES BEFORE RESUMING OPERATION

After the unit has stopped, it cannot be restarted until 3 minutes time has elapsed. This is to protect the unit. Operation will automatically resume after 3 minutes.

AIRFLOW DIRECTION ADJUSTMENT

The louver can be adjusted automatically using the SWING button.

- When the Power is ON, the louver opens fully.
- Press the SWING button on the panel or remote controller to initiate the Auto Swing feature. The louver will swing up and down automatically.

FAN operation

- Press the "MODE" button until the "FAN" indicator light comes on.
- Press the "FAN SPEED" button to choose the fan speed. The temperature cannot be adjusted.
- Do not connect the duct to a window.

TIMER: Auto Start/Stop Operation

When the unit is on, pressing the Timer button will initiate the Auto stop program. The TIMER OFF indicator light illuminates. Press the Up (^) or Down (v) button to select the desired time. Press the TIMER button again within 5 seconds. The Auto start program is initiated and the TIMER ON indicator light illuminates. Press the Up (^) or Down (v) button to select the desired Auto start time.

When the unit is off, press the Timer button to initiate the Auto start program. Pressing it again within five seconds will initiate the Auto stop program.

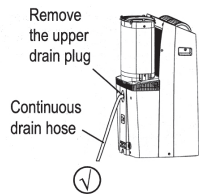
Press or hold the Up (^) or Down (v) button to change the Auto time by 0.5 hour increments, up to 10 hours, then at 1 hour increments up to 24 hours. The control will count down the time remaining until start.

The system will automatically revert back to display the previous temperature setting if there is no operation within 5 seconds.

Turning the unit ON or OFF at any time or adjusting the timer setting to 0.0 will cancel the Auto Start/Stop timer program.

Should a malfunction occur, the Auto Start/Stop timed program will also be cancelled.

- Please do not adjust the louver manually.



WATER DRAINAGE

- During Dry modes, remove the upper drain plug from the back of the unit and install the drain connector (5/8" universal female adapter) with a 3/4" hose (not included). For models without drain connector, just attach the drain hose to the hole. Place the end of the hose directly in the drain area you're using.

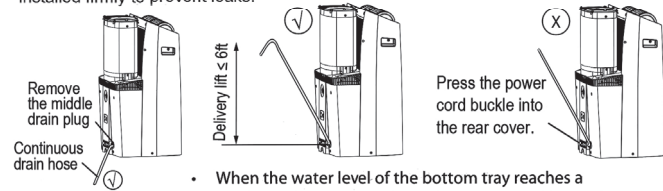
WATER DRAINAGE (Under heat mode)

- Remove the middle drain plug from the back of the unit and install the drain connector (5/8" universal female adapter) with a 3/4" hose (not included). For models without the drain connector, attach the drain hose to the connector. Place the end of the hose in the drain area you're using.

NOTICE

The drain hose can be elevated up to 6ft (1.8m). Direct the hose toward the drain, making sure that there are no kinks that will restrict water flow. Place the end of the hose into the drain and make sure the end of hose is directed downward (See Figs with (V)).

Figures with (X) are installations not recommended by the manufacturer. When the continuous drain hose is not used, ensure that the corresponding drain plug and knob are installed firmly to prevent leaks.



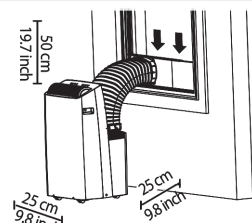
- When the water level of the bottom tray reaches a predetermined level, the unit beeps 8 times. The digital display shows "P1." At this time the air conditioning/dehumidification process will immediately stop. However, the fan motor will continue to operate (this is normal). Carefully move the unit to a drain location, remove the bottom drain plug and let the water drain away. Reinstall the bottom drain plug and restart the machine until the "P1" symbol disappears. If the error repeats, call a service center.

NOTICE

Be sure to reinstall the bottom drain plug firmly to prevent leakage before using the unit.

INSTALLATION INSTRUCTIONS

Choosing the Right Location



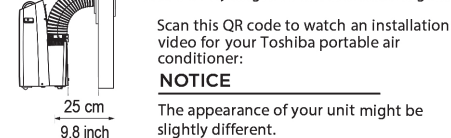
Your installation location should meet the following requirements:

- Make sure that you install your unit on an even surface to minimize noise and vibration.
- The unit must be installed near a grounded plug, and the Collection Tray Drain (found on the back of the unit) must be accessible.
- The unit should be located at least 9.8" (25cm) from the nearest wall to ensure proper air conditioning. The horizontal louver blade should be at least 50cm (19.7") away from obstacles.
- DO NOT cover the Intakes, Outlets or Remote Signal Receiver of the unit, as this could cause damage to the unit.

Recommended Installation

WARNING

- This air-conditioning unit is a hermetically sealed unit that contains fluorinated gasses. For specific information on the type of gas and the amount, please refer to the relevant label on the unit itself.
- Service, maintenance or repair of this unit must be performed by a certified technician.
- Product recycling must be done according to local regulations.



NOTICE

The appearance of your unit might be slightly different.



Window Installation Kit



1: For Hung Window types only

Insert the Air Exhaust Adapter into the exhaust of the hose (the circular opening) for optimal performance. Rotate the adapter clockwise until the locking tabs click and it no longer rotates. Skip this step if installing into a horizontal sliding window.

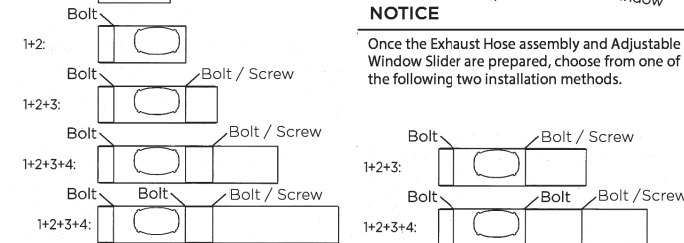
2: Preparing the adjustable window slider

- Depending on the size of your window, adjust the size of the window slider. Use the combination of panels that best fits your window opening.
- If the length of the window requires two or more window sliders, use the bolt to fasten the window sliders once they are adjusted to the proper length.



NOTICE

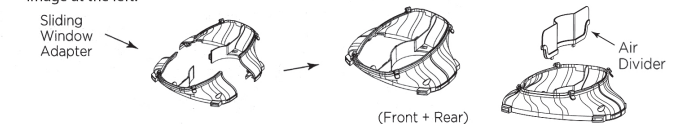
Once the Exhaust Hose assembly and Adjustable Window Slider are prepared, choose from one of the following two installation methods.



NOTE: You may have to cut the window slider to fit the size of your window.

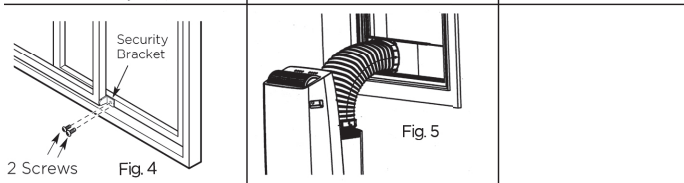
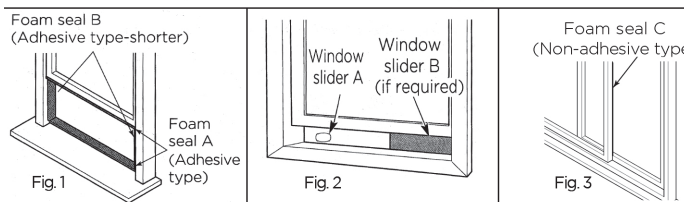
3: Assembling the Sliding Window Adapter (Only needed for Sliding Window applications).

Align both halves of the sliding window adapter and connect them. Then, attach the air divider to the newly formed window adapter on the outdoor side. The fully assembled adapter should look like the image at the left.



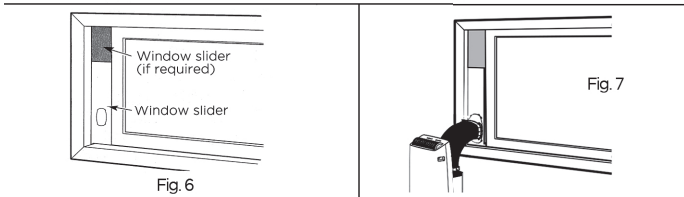
Type 1: Hung window installation

- Cut the adhesive foam seal A and B strips to the proper lengths, and attach them to the window sash and frame as shown. (Fig. 1)
- Insert the window slider assembly into the window opening. If the hose opening is covered by the window frame, rotate the panel so the thicker side faces the window frame. (Fig. 2)
- Cut the non-adhesive foam seal C strip to match the window height. Insert the foam seal between the glass and the window frame to prevent air and insects from getting into the room. (Fig. 3)
- If desired, install the security bracket with 2 screws as shown. (Fig. 4)
- Attach the Sliding Window Adapter to the hose by lining up the circles on the adapter to the hole in the window slider (Fig. 5)



Type 2: Sliding window Installation (Optional)

- Cut the adhesive foam seal A and B strips to the proper lengths, and attach them to the window sash and frame as shown. (Fig. 1)
- Insert the window slider assembly into the window opening. Insert the slider assembly into the window opening. If the hose opening is covered by the window frame, rotate the panel so the thicker side faces the window frame. (Fig. 6)
- Cut the non-adhesive foam seal C strip to match the window height. Insert the foam seal between the glass and the window frame to prevent air and insects from getting into the room. (Fig. 3)
- If desired, install the security bracket with 2 screws as shown. (Fig. 4)
- Attach the Sliding Window Adapter to the hose by lining up the circles on the adapter to the hole in the window slider (Fig. 7)



NOTICE

To ensure proper function, DO NOT overextend or bend the hose. Make sure that there are no objects within 20in (~500mm) of the inlet and outlet hose. All illustrations in this manual are for explanation purposes only, your air conditioner may be slightly different than shown.



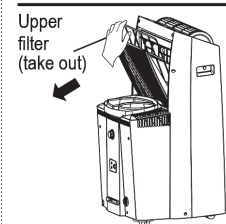
Note: The images shown here are for illustrative purpose only and may be subject to change.

CARE AND CLEANING

Safety Precautions

- Always unplug the unit before cleaning or servicing.
- DO NOT use flammable liquids or chemicals to clean the unit.
- DO NOT wash the unit under running water. Doing so causes electrical danger.
- DO NOT operate the machine if the power supply was damaged during cleaning. A damaged power cord must be replaced with a new cord from the manufacturer.

Air Filter Cleaning



CAUTION

DO NOT operate the unit without filter because dirt and lint will clog it and reduce performance.

Maintenance Tips

- Be sure to clean the air filter every 2 weeks for optimal performance.
- The water collection tray should be drained immediately after P1 error occurs, and before storage to prevent mold.
- In households with animals, you will have to periodically wipe down the grill to prevent blocked airflow due to animal hair.

Unit Cleaning

Clean with a soft cloth only. Do not use strong detergents that contain wax or thinners as it may damage the product

Store the Unit When Not in Use

- Drain the unit's water collection tray according to the instructions in the following section.
- Run the unit on FAN mode for 12 hours in a warm room to dry it and prevent mold.
- Turn off the unit and unplug it.
- Clean the air filter according to the instructions in the previous section. Reinstall the clean, dry filter before storing.
- Remove the batteries from the remote control.

NOTICE

Be sure to store the unit in a cool, dark place. Exposure to direct sunlight or extreme heat can shorten the lifespan of the unit.

TROUBLESHOOTING TIPS

Before calling service, review this list. It may save you time and expense. This list includes common occurrences that are not the result of defective workmanship or materials of this appliances.

Problem	Solution
Unit does not turn on when pressing ON/OFF button	Displays P1 Error Code and means the water collection tray is full. Turn off the unit, drain the water from the water collection tray, and restart the unit. If room temperature is lower than the set temperature in COOL mode, reset the temperature.
Unit does not cool well	The air filter is blocked with dust or animal hair. Turn off the unit and clean the filter according to the instructions. Exhaust hose is not connected or is blocked. Turn off the unit, disconnect the hose, check for blockage and reconnect the hose. Temperature setting is too high; decrease the set temperature. Make sure all windows and doors are closed. The room area could be too large; doublecheck the cooling area. Check the room for possible heat sources and remove them if possible.
The unit is noisy and/or vibrates too much	The floor is not level. Place the unit on a flat, level surface. The air filter is blocked with dust or animal hair. Turn off the unit and clean the filter according to the instructions.
The unit makes a gurgling sound	This sound is caused by the refrigerant flow inside the unit and is normal.
Unit will not connect to Wireless or App does not work (some models)	For additional support and troubleshooting tips, follow the link in the QR code:
The top of the window kit leans forward out of the window track	Ensure the Window Kit brace is installed properly.

NOTICE

Do not add extension to the exhaust hose(s)!

SYSTEM OVERVIEW

Devices required to use the Smart AC:

- Smart Phone with compatible iOS or Android system.
- Wireless Router (a 2.4GHz network is required to connect).
- Smart Air Conditioner.

DOWNLOAD AND INSTALL THE APP

Android QR code



Apple QR code



Scan to download app.

- You can also go to Google Play or App Store and search for Toshiba NA AC. For more information, please refer to Toshiba Lifestyle website: us.toshiba-lifestyle.com.

NOTICE

All the images in this manual are for reference only, your product and app may look slightly different. The actual product and app instructions have to be considered.

BATTERY (Not supplied) DISPOSAL

Ensure used batteries are disposed of properly.

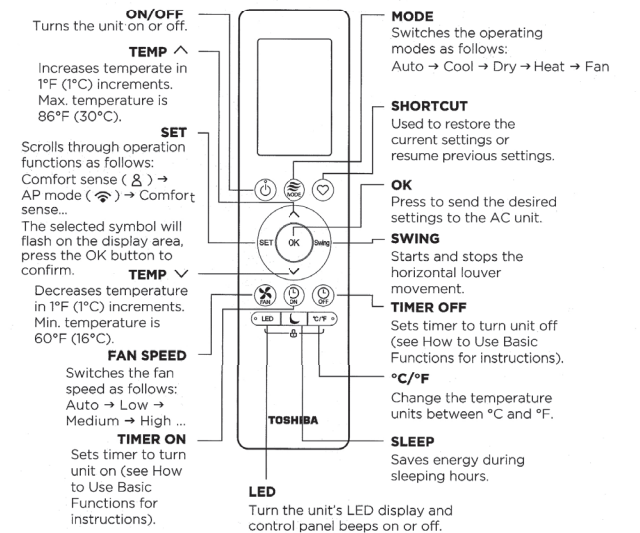
TIPS FOR USING REMOTE CONTROL

- The remote control must be used within 26 feet / 8 meters of the unit.
- The unit will beep when it receives a signal from the remote. Curtains, other materials and direct sunlight can interfere with the IR signal receiver.
- In order to properly transmit a command, the ON/OFF indicator must be illuminated on the remote's display. (See the Remote LED Screen Indicators section for more information.)

Remote Control Specifications

Model	RG10F2(B2)/BGEFU1
Rated Voltage	3.0V (Dry batteries R03/LR03x2)
Signal Receiving Range	26 ft (8 m)
Environment	-5°C ~ 60°C (23°F ~ 140°F)

Function Buttons



Note: The remote control vary depend of model: The buttons on remote control may have a different name or location than the remote control shows in this manual.

DECLARATION OF CONFORMITY

We hereby declare that this AC is in compliance with the essential requirements and other relevant provisions of Directive 1999/5/EC.

SPECIFICATION OF WIRELESS MODULE

Model: US-OSK103	Dimensions: 41 x 24 x 5 (mm)
Standard: IEEE 802.11 b/g/n	Operation Temperature: 0°C ~ 45°C / 32°F ~ 113°F.
Antenna Type: External omnidirectional Antenna	Operation Humidity: 10% ~ 85%
Frequency: 2.4 GHz (wireless)	Power Input: DC 5V/300 mA
Maximum Transmitted Power: 19.8 dBm Max	

PRECAUTIONS

- Supports operating systems: iOS 7+ or Android 4+.
- In the event of a OS update, there may be a delay between the update of the OS and a related software update during which your OS may or may not be supported until a new version is released. Your specific mobile phone or problems in your network may prevent the system from working and Toshiba will not be responsible for any problems that could be caused by incompatibility or network issues.
- This Smart AC only supports WPA-PSK/WPA2-PSK (recommended) encryption. Please check the Toshiba Lifestyle website, us.toshiba-lifestyle.com for updated information.
- To ensure proper scanning of the QR code, your smart phone must have at least a 5-megapixel camera.
- Due to unstable network connectivity, requests may time out. If this happens, re-run the network configuration.
- Due to unstable network connectivity, commands may time out. If this happens, the smartphone app and the actual product may display conflicting information. The information displayed on the actual product is always the most accurate available. Refresh the app to re-sync.

NOTICE

Toshiba will not be responsible for any problems that could be caused by incompatibility or network issues, your wireless router and mobile phone.

ADDITIONAL APP AND SMART HOME FUNCTIONS

For additional instructions regarding the features of the app and Smart Home skill capabilities, scan the QR code.



PRINTED IN MEXICO/ SC:08.16.2021

obpn: 16120600A20563 Pags: TAB

shnmdl:RACPT1411HWRU_B elbr:m.c.



8 0 4 1 0 6 5 1 0

