



To download your copy of the Help Guide go to:

<http://consumerservicerefurbish.com>

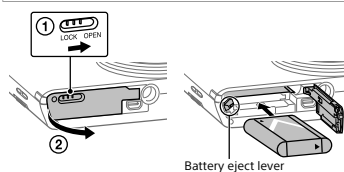
- Click on: **Download Owner's Manual**
- On Manufacturer or Brand, select: **Sony**
- On Product Type, select: **Camera**
- On Model Number, select: **DSC-W830**

Checking the supplied items

- Rechargeable battery pack NP-BN (1) (This rechargeable battery pack cannot be used with Cyber-shot™ that are supplied with the NP-BN1 battery pack.)
- Dedicated USB cable (1)
- AC Adaptor AC-UB10C/UB10D (1)
- Wrist strap (1) (Optional - not supplied)
- Instruction Manual (this manual) (1)

How to use

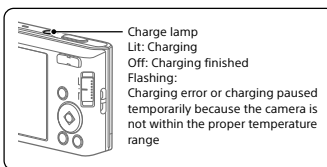
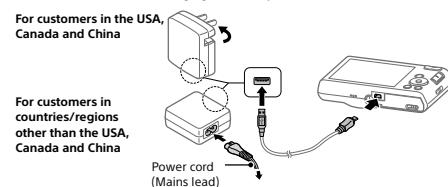
Inserting the battery pack



- 1 Open the cover.
- 2 Insert the battery pack.

Charging the battery pack

Turn off the camera while charging the battery.



- 1 Connect the camera to the AC Adaptor, using the dedicated USB cable.
- 2 Connect the AC Adaptor to the wall outlet (wall socket).
• Be sure to use only genuine Sony brand battery packs, the dedicated USB cable and AC Adaptor.

To charge by connecting to a computer

The battery pack can be charged by connecting the camera to a computer using the dedicated USB cable.



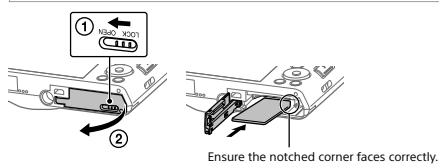
←To a USB jack

Battery life and number of images that can be recorded and played back

	Total usage time	Number of images
Shooting (still images)	Approx. 100 min.	Approx. 210 images
Actual shooting (movies)	Approx. 40 min.	—
Continuous shooting (movies)	Approx. 95 min.	—
Viewing (still images)	Approx. 190 min.	Approx. 3900 images

*The number is based on the CIPA standard.
(CIPA: Camera & Imaging Products Association)

Inserting a memory card (sold separately)

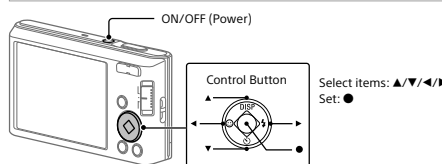


- 1 Open the cover.
- 2 Insert the memory card (sold separately).

To remove the memory card/battery pack

Memory card: Push the memory card in once to eject the memory card.
Battery pack: Slide the battery eject lever. Be sure not to drop the battery pack.

Setting the clock

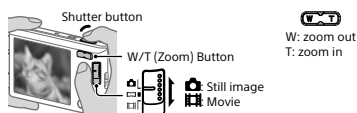


- 1 Press the ON/OFF (Power) button.
- 2 Select a desired language.
- 3 Select a desired geographic location by following the on screen instructions, then press ● on the control button.
- 4 Set [Date & Time Format], [Summer Time] and [Date & Time], then select [OK].
- 5 Follow the instructions on the screen.

To set the date and time again

Select MENU → [Settings] → [Clock Settings] → [Date & Time Setting] to open the date & time setting display.

Shooting still images/movies



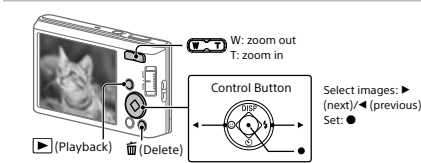
Shooting still images

- 1 Press the shutter button halfway down to focus.
- 2 Press the shutter button fully down to shoot an image.

Shooting movies

- 1 Press the shutter button to start recording.
- 2 Press the shutter button again to stop recording.

Viewing images



- 1 Press [Playback] button.

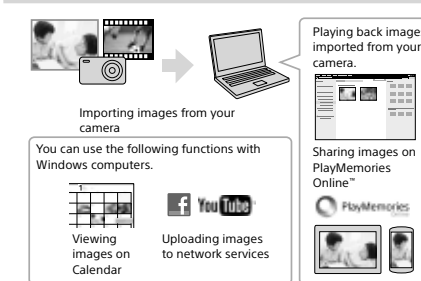
To select next/previous image

Select an image by pressing ▶ (next)/◀ (previous) on the control button. Press ● in the center of the control button to view movies.

To delete an image

- 1 Press [Delete] button.
- 2 Select [This Image] with ▲ on the control button, then press ●.

Features of PlayMemories Home™



Downloading PlayMemories Home

You can download PlayMemories Home from the following URL:
www.sony.net/pm/

Notes on using the camera

On use and care

Avoid rough handling, disassembling, modifying, physical shock, or impact such as hammering, dropping, or stepping on the product. Be particularly careful of the lens.

On database files

When you insert a memory card without a database file into the camera and turn on the power, part of the memory card capacity is used to automatically create a database file. It may take some time until you can perform the next operation. If a database file error occurs, import all the images to a computer using PlayMemories Home, then format the memory card.

Notes on recording/playback

- To ensure stable operation of the memory card, we recommend that you use this camera to format any memory card being used with this camera for the first time. Note that formatting will erase all data recorded on the memory card. This data cannot be restored. Be sure to back up any important data to a computer or other storage location.
- Before you start recording, make a trial recording to make sure that the camera is working correctly.

- The camera is neither dust-proof, nor splash-proof, nor water-proof.
- Avoid exposing the camera to water. If water enters inside the camera, a malfunction may occur. In some cases, the camera cannot be repaired.
- Do not aim the camera at the sun or other bright light. It may cause the malfunction of the camera.
- Do not use the camera near a location that generates strong radio waves or emits radiation. Otherwise, the camera may not properly record or play back images.
- Using the camera in sandy or dusty locations may cause malfunctions.
- Do not shake or strike the camera. It may cause a malfunction and you may not be able to record images. Furthermore, the recording media may cause unusable or image data may be damaged.
- Clean the flash surface before use. The heat of the flash emission may cause dirt on the flash surface to start smoking or burning. Wipe the flash surface with a soft cloth to remove dirt or dust, etc.

On camera's temperature

Your camera and battery may get hot due to continuous use, but it is not a malfunction.

On the overheat protection

Depending on the camera and battery temperature, you may be unable to record movies or the power may turn off automatically to protect the camera. A message will be displayed on the screen before the power turns off or you can no longer record movies. In this case, leave the power off and wait until the camera and battery temperature goes down. If you turn on the power without letting the camera and battery cool enough, the power may turn off again or you may be unable to record movies.

Warning on copyright

Television programs, films, videotapes, and other materials may be copyrighted. Unauthorized recording of such materials may be contrary to the provisions of the copyright laws.

No compensation for damaged content or recording failure

Sony cannot compensate for failure to record or loss or damage of recorded content due to a malfunction of the camera or recording media, etc.

On moisture condensation

If the camera is brought directly from a cold to a warm location, moisture may condense inside or outside the camera. This moisture condensation may cause a malfunction of the camera.

If moisture condensation occurs

Turn off the camera and wait about an hour for the moisture to evaporate. Note that if you attempt to shoot with moisture remaining inside the lens, you will be unable to record clear images.

How to store the battery pack

- To prevent staining the terminal, short-circuiting, etc., be sure to use a plastic bag, etc. to keep away from metal materials when carrying or storing.
- A battery pack that has not been used for more than one year may have deteriorated.

Specifications

Camera

[System]

Image device: 7.76 mm (1/2.3 type) CCD, Primary color filter
Total pixel number of camera: Approx. 20.5 megapixels
Effective pixel number of camera: Approx. 20.1 megapixels
Lens: ZEISS Vario-Tessar 8× zoom lens
F = 4.5 mm - 36 mm (25 mm - 200 mm (35 mm film equivalent))
F3.3 (W) - F6.3 (T)
While shooting movies (16:9): 28 mm - 224 mm*
While shooting movies (4:3): 34 mm - 272 mm*
*When [Movie SteadyShot] is set to [Standard].
SteadyShot: Optical
Burst shooting (when shooting with the largest pixel number):
Approx. 1 image/second (up to 3 images)
File format:
Still images: JPEG (DCF, Exif, MPF Baseline) compliant, DPOF compatible
Movies: MPEG-4 AVC/H.264
Recording media: Internal Memory (Approx. 27 MB), Memory Stick PRO Duo™ media, Memory Stick Micro™ media, SD cards, microSD memory cards
Flash: Flash range (ISO sensitivity [Recommended Exposure Index] set to Auto):
Approx. 0.3 m to 2.8 m (11 7/8 in. to 9 ft. 2 1/4 in.) (W)
Approx. 1.5 m to 2 m (4 ft. 11 1/8 in. to 6 ft. 6 3/4 in.) (T)

[Input and Output connectors]

USB / A/V OUT jack:
Video output
Audio output
USB communication
USB communication: Hi-Speed USB (USB 2.0)

[Screen]

LCD screen: 6.7 cm (2.7 type) TFT drive
Total number of dots: 230 400 dots

[Power, general]

Power: Rechargeable battery pack NP-BN, 3.6 V
AC Adaptor AC-UB10C/UB10D, 5 V
Power consumption (during shooting): Approx. 1.2 W
Operating temperature: 0 °C to 40 °C (32 °F to 104 °F)
Storage temperature: -20 °C to +60 °C (-4 °F to +140 °F)

Dimensions (CIPA compliant):

93.1 mm × 52.5 mm × 22.5 mm (3 3/4 in. × 2 1/8 in. × 29/32 in.) (W/H/D)
Mass (CIPA compliant) (including NP-BN battery pack, Memory Stick PRO Duo media):
Approx. 120 g (4.2 oz)
Microphone: Monaural
Exif Print: Compatible
PRINT Image Matching III: Compatible

AC Adaptor AC-UB10C/UB10D

Power requirements: AC 100 V to 240 V, 50 Hz/60 Hz, 70 mA
Output voltage: DC 5 V, 0.5 A
Operating temperature: 0 °C to 40 °C (32 °F to 104 °F)
Storage temperature: -20 °C to +60 °C (-4 °F to +140 °F)
Dimensions:
Approx. 50 mm × 22 mm × 54 mm (2 inches × 7/8 inches × 2 1/4 inches) (W/H/D)

Rechargeable battery pack NP-BN

Battery type: Lithium-ion battery
Maximum voltage: DC 4.2 V
Nominal voltage: DC 3.6 V
Maximum charge voltage: DC 4.2 V
Maximum charge current: 0.9 A
Capacity:
typical: 2.3 Wh (630 mAh)
minimum: 2.2 Wh (600 mAh)

Design and specifications are subject to change without notice.

Trademarks

- Memory Stick and are trademarks or registered trademarks of Sony Corporation.
- Microsoft, Windows, and Windows Vista are either registered trademarks or trademarks of Microsoft Corporation in the United States and/or other countries.
- Mac is a registered trademark of Apple Inc. in the United States and other countries.
- SDiC logo is a trademark of SD-3C, LLC.
- Facebook and the "f" logo are trademarks or registered trademarks of Facebook, Inc.
- YouTube and the YouTube logo are trademarks or registered trademarks of Google Inc.
- In addition, system and product names used in this manual are, in general, trademarks or registered trademarks of their respective developers or manufacturers. However, the ™ or ® marks may not be described in this manual.

WARNING

To reduce fire or shock hazard, do not expose the unit to rain or moisture.

IMPORTANT SAFETY INSTRUCTIONS -SAVE THESE INSTRUCTIONS DANGER TO REDUCE THE RISK OF FIRE OR ELECTRIC SHOCK, CAREFULLY FOLLOW THESE INSTRUCTIONS

If the shape of the plug does not fit the power outlet, use an attachment plug adaptor of the proper configuration for the power outlet.

CAUTION

Battery pack

- If the battery pack is mishandled, the battery pack can burst, cause a fire or even chemical burns.
- Observe the following cautions.
- Do not disassemble.
- Do not crush and do not expose the battery pack to any shock or force such as hammering, dropping or stepping on it.
- Do not short circuit and do not allow metal objects to come into contact with the battery terminals.
- Do not expose to high temperature above 60°C (140°F) such as in direct sunlight or in a car parked in the sun.
- Do not incinerate or dispose of in fire.
- Do not handle damaged or leaking lithium ion batteries.

- Be sure to charge the battery pack using a genuine Sony battery charger or a device that can charge the battery pack.
- Keep the battery pack out of the reach of small children.
- Keep the battery pack dry.
- Replace only with the same or equivalent type recommended by Sony.
- Dispose of used battery packs promptly as described in the instructions.

AC Adaptor

Use the nearby wall outlet (wall socket) when using the AC Adaptor. Disconnect the AC Adaptor from the wall outlet (wall socket) immediately if any malfunction occurs while using the apparatus.

For Customers in the U.S.A. and Canada

RECYCLING LITHIUM-ION BATTERIES

Lithium-ion batteries are recyclable. You can help preserve our environment by returning your used rechargeable batteries to the collection and recycling location nearest you. For more information regarding recycling of rechargeable batteries visit <http://www.call2recycle.org/>



Caution: Do not handle damaged or leaking Lithium-ion batteries.

Battery pack

This device complies with Part 15 of the FCC Rules. Operation is subject to the following two conditions:
(1) This device may not cause harmful interference, and (2) this device must accept any interference received, including interference that may cause undesired operation.
CAN ICES-3 B/NMB-3 B

For Customers in the U.S.A.

Regulatory Information

Declaration of Conformity

Trade Name: SONY
Model No.: DSC-W830
Responsible Party: Sony Electronics Inc.
Address: 16530 Via Esprillo, San Diego, CA 92127 U.S.A.

This device complies with Part 15 of the FCC Rules. Operation is subject to the following two conditions: (1) This device may not cause harmful interference, and (2) this device must accept any interference received, including interference that may cause undesired operation.

This equipment must not be co-located or operated in conjunction with any other antenna or transmitter.

CAUTION

You are cautioned that any changes or modifications not expressly approved in this manual could void your authority to operate this equipment.

Note:

This equipment has been tested and found to comply with the limits for a Class B digital device, pursuant to Part 15 of the FCC Rules.

These limits are designed to provide reasonable protection against harmful interference in a residential installation. This equipment generates, uses, and can radiate radio frequency energy and, if not installed and used in accordance with the instructions, may cause harmful interference to radio communications. However, there is no guarantee that interference will not occur in a particular installation. If this equipment does cause harmful interference to radio or television reception, which can be determined by turning the equipment off and on, the user is encouraged to try to correct the interference by one or more of the following measures:

- Reorient or relocate the receiving antenna.
- Increase the separation between the equipment and receiver.
- Connect the equipment into an outlet on a circuit different from that to which the receiver is connected.
- Consult the dealer or an experienced radio/TV technician for help.

The supplied interface cable must be used with the equipment in order to comply with the limits for a digital device pursuant to Subpart B of Part 15 of FCC Rules.

