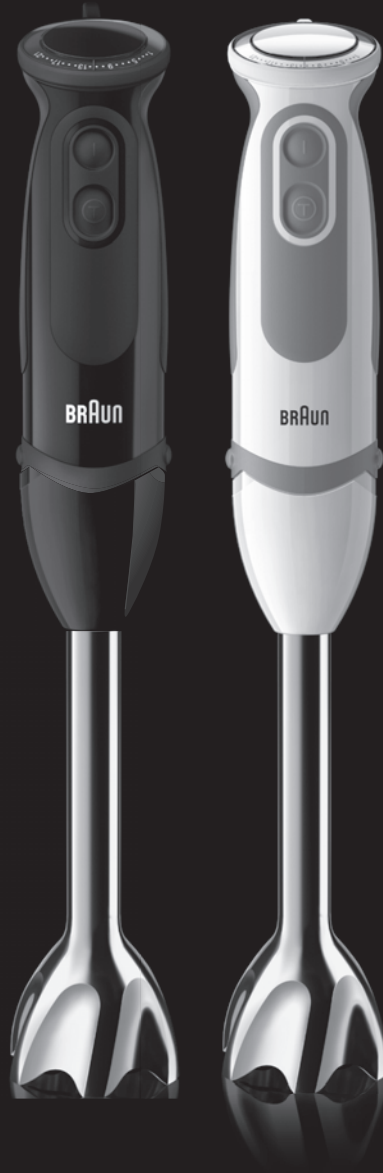


BRAUN

MultiQuick 5 Vario

814100148



"Recipe book not included"

Please read this manual carefully before using your unit and keep it for future reference

IMPORTANT SAFEGUARDS

When using electrical appliances, basic safety precautions should always be followed to reduce the risk of fire, electric shock and/or injury to persons, including the following:

READ ALL INSTRUCTIONS.

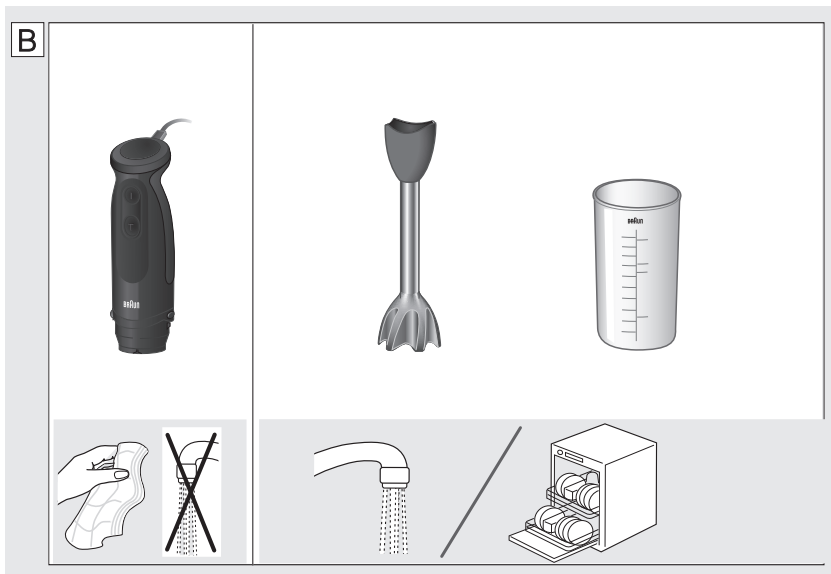
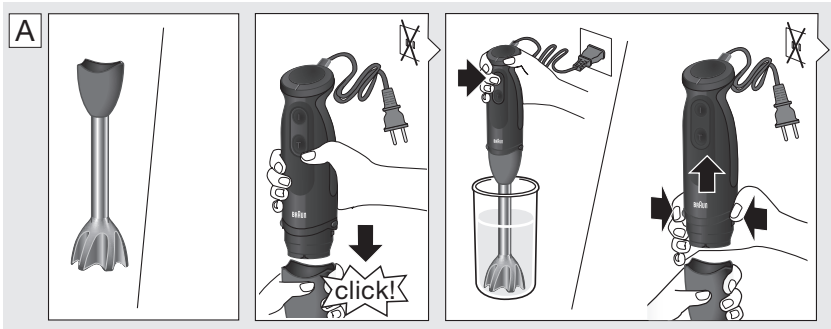
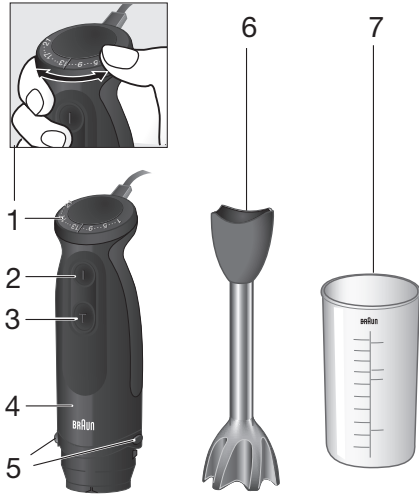
1. The appliance is not intended for use by persons (including children) with reduced physical, sensory or mental capabilities, or lack of experience and knowledge, unless they have been given supervision or instructions concerning use of the appliance by a person responsible for their safety.
2. This appliance should not be used by children and care should be taken when used near children.
3. Remove any packaging materials before using the appliance for the first time.
4. Turn the appliance off. Unplug from outlet when not in use, before putting on or taking off parts, and before cleaning. To unplug, grasp plug and pull from electrical outlet. Never pull cord.
5. To protect against electrical shock, do not put the motor body, cord or electrical plug of this hand blender in water or other liquids. Only the detachable blending shaft and other certain parts of this appliance have been designed for immersion into water or other liquids. Never submerge any other part of this unit. If hand blender falls into liquid, unplug first, then remove immediately. Do not reach into the liquid without unplugging the unit first.
6. The use of attachments/accessories not sold or recommended by Braun may cause fire, electrical shock or risk of injuries to persons.
7. Regularly inspect the power cord, power plug and actual appliance for any damage. Do not operate if damaged in any way or after the appliance malfunctions. Immediately cease use of the appliance and contact a service center.
8. Avoid any contact with blades or moveable parts.
9. Do not use outdoors or for anything other than its intended purpose.
10. Keep hands and utensils out of the container while blending to prevent the possibility of severe injury to persons or damage to the unit. A scraper may be used, but must be used only when the unit is not running.
11. Detach blending shaft from the motor body before washing the blades or shaft.
12. When mixing liquids, especially hot liquids, use a tall container or make small quantities at a time to reduce spillage, splattering and possibility of injury from burning.
13. The metal blending shaft and whisk may scratch or mark non-stick coatings. Do not use in non-stick cookware.
14. Check work bowl for presence of foreign objects before using.
15. Do not let any cord hang over the edge of the table or counter. Do not let cord contact hot surfaces, including stovetop.

16. Maximum rating is based on the MQ 20 chopper «hc» that draws the greatest power and other recommended attachments may draw significantly less power.
17. The «hc» chopper is intended for processing small quantities of food for immediate consumption, and is especially recommended for preparing baby food. The appliance is not intended to prepare large quantities of food at one time.
18. Double-blade knife is sharp. Handle carefully. Use extreme care when removing or replacing knife blade.
19. Bowl must be in place before replacing knife blades.
20. Do not operate your appliance in an appliance garage or under a wall cabinet.
21. We suggest you save all packing materials in the event that future shipping of the machine is needed. Keep all plastic bags away from children.
22. This appliance has a polarized plug (one blade is wider than the other). To reduce the risk of electric shock, this plug will fit in a polarized outlet only one way. If the plug does not fit fully in the outlet, reverse the plug. If it still does not fit, contact a qualified electrician. Do not modify the plug in any way.

SAVE THESE INSTRUCTIONS

FOR HOUSEHOLD USE ONLY

WARNING: RISK OF FIRE OR ELECTRIC SHOCK



NOTE: In order to ensure the highest possible standard for refurbished items, all units are thoroughly inspected as part of the process. For this item, water may be used during the refurbishing process and so; you may notice some condensation in the water reservoir. It is recommended to rinse the water reservoir with fresh water prior to its first use.

- Accessory type and quantity may vary depending on the model.
- The image shown here is for illustrative purposes only and may be subject to change.

Our products are engineered to meet the highest standards of quality, functionality and design. We hope you thoroughly enjoy your new Braun appliance.

Before Use

Please read instructions carefully and completely before using the appliance.

Parts and Accessories

- 1 Variable speed regulator
- 2 Variable speed button (on/off)
- 3 Turbo button (T)
- 4 Motor part
- 5 EasyClick release buttons
- 6 Blender shaft
- 7 Beaker

Clean all parts before using for the first time – refer to «Care and Cleaning».

Unpacking

Take the unit out of the carton. Remove all pieces of the packing (do not remove the rating plate).

How to Use the Appliance

Setting the speed

When activating the variable speed button (2), the processing speed corresponds to the setting of the variable speed regulator (1). The higher the setting, the faster the chopping results. You can adjust the speed conveniently during operation by turning the speed regulator.

Maximum processing speed can be achieved by pressing the Turbo button (3). You may also use the Turbo button for instant powerful pulses without having to manipulate the speed regulator.

Blending Shaft (A)

The hand blender is perfectly suited for preparing dips, sauces, salad dressings, soups, baby food, as well as drinks, smoothies and milkshakes.

For best results, use the Turbo speed.

Assembly and Operation

- Attach the blending shaft (6) to the motor part until it clicks.
- Place the blending shaft into the mixture to be blended. Then switch the appliance on.
- Blend ingredients to the desired consistency using a gentle up-and-down motion.
- After use, unplug the hand blender and press the EasyClick release buttons (5) to detach the blending shaft.

Caution

- If using the appliance to purée hot food in a saucepan or pot, remove the saucepan or pot from the heat source and ensure the liquid is not boiling. Allow hot food to cool slightly to avoid risk of scalding.
- Do not let the hand blender sit in a hot pan on the cooktop when not in use.

Recipe Example: Mayonnaise

1.25 cups / 250 g oil (e.g. sunflower oil)

1 egg and 1 extra egg yolk

1–2 tbsp. vinegar

Salt and pepper to taste

- Place all ingredients (at room temperature) into the beaker in the order as above.
- Place the hand blender at the bottom of the beaker. Blend at Turbo speed until the oil starts emulsifying.

Care and Cleaning (B)

- Always clean the hand blender thoroughly after use.
- Unplug hand blender before cleaning.
- Do not immerse the motor part (4) or gearboxes (8a, 9a) in water or any other liquid. Clean with a damp cloth only.
- All other parts can be cleaned in a dishwasher. Do not use abrasive cleaners that could scratch the surface.
- You may remove the anti-slip rubber ring from the bottom of the bowl for an extra thorough clean.
- When processing foods with high pigment content (e.g. carrots), the accessories may become discolored. Wipe these parts with vegetable oil before cleaning them.

Both the design specifications and these user instructions are subject to change without notice.

Please do not dispose of the product in the household waste at the end of its useful life. Disposal can take place at appropriate collection points provided in your country.

