

Before operating the unit, please read this guide thoroughly and retain it for future reference.

CAUTION

Caution on charging

When the USB plug is inserted in a wet condition, a short circuit occurs due to the liquid (tap water, salt water, refreshing drink etc.) attached to the main unit and charging cable or foreign matter, it may cause abnormal heat generation or malfunction.

Never insert USB plug when the main unit or charging cable is wet condition.

Do not install the appliance in a confined space, such as a bookcase or built-in cabinet. Do not expose the batteries (battery pack or batteries installed) to excessive heat such as sunshine, fire or the like for a long time.

Do not expose the batteries to extreme low temperature conditions that may result in overheating and thermal runaway. Do not dismantle, open or shred secondary cells or batteries. In the event of a cell leaking, do not allow the liquid to come in contact with the skin or eyes. If contact has been made, wash the affected area with copious amounts of water and seek medical advice. Secondary batteries need to be charged before use. Always refer to the equipment manual for proper charging instructions. After extended periods of storage, it may be necessary to charge and discharge the cells or batteries several times to obtain maximum performance. Dispose of properly.

RECYCLING RECHARGEABLE BATTERIES (Batteries not included)

Rechargeable batteries are recyclable. You can help preserve our environment by returning your used rechargeable batteries to the collection and recycling location nearest you.

Caution: Do not handle damaged or leaking rechargeable batteries.

For customers in the USA

You are cautioned that any changes or modifications not expressly approved in this manual could void your authority to operate this equipment.

NOTE:

This equipment has been tested and found to comply with the limits for a Class B digital device, pursuant to Part 15 of the FCC Rules. These limits are designed to provide reasonable protection against harmful interference in a residential installation. This equipment generates, uses and can radiate radio frequency energy and, if not installed and used in accordance with the instructions, may cause harmful interference to radio communications. However, there is no guarantee that interference will not occur in a particular installation. If this equipment does cause harmful interference to radio or television reception, which can be determined by turning the equipment off and on, the user is encouraged to try to correct the interference by one or more of the following measures:

- Reorient or relocate the receiving antenna.
- Increase the separation between the equipment and receiver.
- Connect the equipment into an outlet on a circuit different from that to which the receiver is connected.
- Consult the dealer or an experienced radio/TV technician for help.

This equipment must not be co-located or operated in conjunction with any other antenna or transmitter.

Supplier's Declaration of Conformity	
Trade Name :	SONY
Model :	SRS-XB22

This device complies with part 15 of FCC Rules and Innovation, Science and Economic Development Canada's licence-exempt RSS(s). Operation is subject to the following two conditions: (1) this device may not cause harmful interference, and (2) this device must accept any interference received, including interference that may cause undesired operation.

This equipment complies with FCC/ISED radiation exposure limits set forth for an uncontrolled environment and meets the FCC radio frequency (RF) Exposure Guidelines and RSS-102 of the ISED radio frequency (RF) Exposure rules as this equipment has very low levels of RF energy.

Precautions

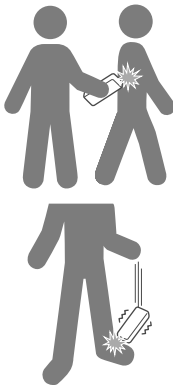
On safety

- If your skin touches this product for a long time when the power is on, it may cause a low temperature injury.
- Important information such as the model name is located inside of the cap on the rear side of the unit.

About the Party Booster function

If the unit hits a person or thing, it may cause an accident, injury or malfunction. When using the Party Booster function, notice the following.

- Be sure to disconnect the micro-USB cable, etc. from the unit.
- Be sure to close the cap when using the unit.
- When using the function, hold firmly and do not shake the unit violently so that you do not throw or drop the unit from your hand.
- Before using the function, make sure that you have secured sufficient space around the unit.
- Do not hit the unit with a tool.
- Do not use the function while you are driving or walking.
- Keep 20 cm (7 7/8 in) or more away from the face and eyes while in use.
- Avoid using the function for a long time. Take breaks regularly.
- When using the function, if you get tired, feel uncomfortable or experience pain somewhere in your body, stop using the function immediately.



On placement

- Do not set the unit in an inclined position.
- Do not leave the unit in a place subject to high temperatures, such as direct sunlight, near a heat source or under lighting equipment.
- Do not leave any objects susceptible to magnetism (cash cards, credit cards with magnetic coding, etc.) near the unit.
- Do not use or leave the unit in a car.

Others

- Do not use or leave the unit in an extremely cold or hot environment (temperature outside the range of 5 °C – 35 °C (41 °F – 95 °F)). If the unit is used or left in outside the above range, the unit may automatically stop to protect internal circuitry.
- At high temperature, the charging may stop or the volume may reduce to protect the battery.
- Even if you do not intend to use the unit for a long time, charge the battery to its full capacity once every 6 months to maintain its performance.

About the Voice Guidance

IMPORTANT: THE SOUND GUIDANCE IS AVAILABLE IN THIS PRODUCT ONLY IN ENGLISH
Depending on the status of the unit, the voice guidance outputs from the unit as follows.

- When setting the unit to the pairing mode; "Bluetooth pairing"
- When pressing the BATT (battery) button to check the battery power during the unit is turned on; "Battery fully charged/Battery about 70%/Battery about 50%/Battery about 20%/Please charge"
- When the battery power is low; "Please charge"
- When the settings are completed for the Speaker Add function; "Double mode"
- When pressing and holding the ADD (Speaker Add) button during the Speaker Add function; "Left/Right/Double mode"

On Copyrights

- Android, Google Play and other related marks and logos are trademarks of Google LLC.
- LDAC™ and LDAC logo are trademarks of Sony Corporation.

- The BLUETOOTH® word mark and logos are registered trademarks owned by the Bluetooth SIG, Inc. and any use of such marks by Sony Corporation is under license.
- The N-Mark is a trademark or registered trademark of NFC Forum, Inc. in the United States and in other countries.
- Apple, the Apple logo, iPhone, iPod and iPod touch are trademarks of Apple Inc., registered in the U.S. and other countries. App Store is a service mark of Apple Inc., registered in the U.S. and other countries.
- Use of the Made for Apple badge means that an accessory has been designed to connect specifically to the Apple product(s) identified in the badge, and has been certified by the developer to meet Apple performance standards. Apple is not responsible for the operation of this device or its compliance with safety and regulatory standards.
- Other trademarks and trade names are those of their respective owners.
- ™ and ® marks are omitted in the documents.

Notes on waterproof and dust proof features (Read before using the unit)

Waterproof and dust proof performance of the unit

The unit, with the cap fastened securely, has a waterproof specification of IPX7*1 as specified in "Degree of protection against water immersion" of the IEC60529 "Ingress Protection Rating (IP Code)"*3, and a dust proof specification of IP6X*2 as specified in "Degrees of protection against solid foreign objects"*3.

Liquids that the waterproof performance specifications apply to

Applicable	fresh water, tap water, pool water, salt water
Not applicable	liquids other than the above (soapy water, water with detergent or bath agents, shampoo, hot spring water, etc.)

*1 IPX7 (Degree of protection against water immersion): For details, refer to the Help Guide.

*2 IP6X (Degrees of protection against dust): For details, refer to the Help Guide.

*3 The supplied accessories and the connectors of this unit (USB/AUDIO IN) are neither waterproof nor dust proof.

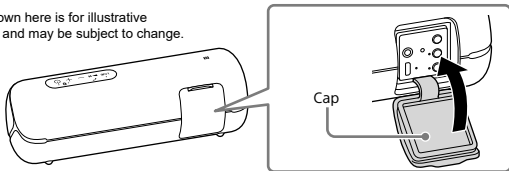
The waterproof and dust proof performance of the unit is based on our measurements under the conditions herein described. Note that malfunctions as a result of water immersion or dust intrusion caused by misuse by the customer are not covered by the warranty.

To avoid deterioration of waterproof and dust proof performance

Check the following and use the unit correctly.

- The unit passes the drop test from 1.22 m (4 ft) on plywood of 5 cm (2 in) thickness conforming to MIL-STD 810 F Method 516.5-Shock. However, this does not guarantee no damage, no breakdown, or waterproof and dust proof performance in all conditions. Deformation or damage from dropping the unit or subjecting it to mechanical shock may cause deterioration of the waterproof and dust proof performance.
- This unit does not have a design that is resistant to water pressure. Use of the unit in a location where high water pressure is applied, such as in the shower, may cause a malfunction.
- Do not pour high-temperature water or blow hot air from a hair dryer or any other appliance on the unit directly. Also, never use the unit in high temperature locations such as in saunas or near a stove.
- Handle the cap with care. The cap plays a very important role in maintenance of the waterproof and dust proof performance. When using the unit, make sure that the cap is closed completely. When closing the cap, be careful not to allow foreign objects inside. If the cap is not closed completely the waterproof and dust proof performance may deteriorate and may cause a malfunction of the unit as a result of water or dust particles entering the unit.

The image shown here is for illustrative purposes only and may be subject to change.



How to care for the unit

Although the fabric part of the unit has water repellent treatment applied, you can use the unit more comfortably and for a longer period of time by following the maintenance procedure below.

- If the surface of the unit gets dirty in the following cases, wash the unit with fresh water (tap water, etc.) promptly to remove the dirt. Leaving dirt on its surface may cause the fabric part to discolor or deteriorate, or the unit to malfunction.
 - Ex.
 - When salt, sand, etc. is stuck on the unit after using it on a beach, pool side, etc.
 - When the unit is stained with foreign substances (sunscreen, suntan oil, etc.)
- If the unit gets wet, wipe off the moisture using a dry soft cloth immediately. In addition, dry the unit in an airy place until no moisture remains.
- The sound quality may change when water enters the speaker section of the unit. It is not malfunction. Wipe off the moisture on its surface, and put the unit on a dry soft cloth with the fabric part facing down to drain the collected water inside the unit. Then, dry the unit in an airy place until no moisture remains.

Note

- If the surface of the unit gets dirty, do not use detergent, thinner, benzine, alcohol, etc. to clean the unit because it will affect the water repellent function of the fabric part of the unit.
- Especially in cold regions, be sure to wipe off the moisture after using the unit. Leaving moisture on its surface may cause the unit to freeze and malfunction.
- If sand grains, etc. enter the fabric part of the unit, remove them carefully. Never use a vacuum cleaner, etc. on the unit. It may cause damage of the speaker unit.

Specifications

Speaker section

Speaker system	Approx. 42 mm (1 2/3 in) dia. × 2
Enclosure type	Passive radiator model

BLUETOOTH

Communication System	
BLUETOOTH Specification version 4.2	
Maximum communication range	
Line of sight approx. 10 m (32 ft)*1	
Frequency band	2.4 GHz band (2.4000 GHz - 2.4835 GHz)
Modulation method	FHSS
Compatible BLUETOOTH Profiles*2	
A2DP (Advanced Audio Distribution Profile) AVRCP (Audio Video Remote Control Profile) HSP (Headset Profile) HFP (Hands-free Profile)	
Supported Codec*3	SBC*4, AAC*5, LDAC*6
Transmission range (A2DP)	
20 Hz - 20,000 Hz (Sampling frequency 44.1 kHz)	

*1 The actual range will vary depending on factors such as obstacles between devices, magnetic fields around a microwave oven, static electricity, reception sensitivity, antenna's performance, operating system, software application, etc.

*2 BLUETOOTH standard profiles indicate the purpose of BLUETOOTH communications between devices.

*3 Codec: Audio signal compression and conversion format

*4 Subband Codec

*5 Advanced Audio Coding

*6 LDAC is an audio coding technology developed by Sony that enables the transmission of High-Resolution (Hi-Res) Audio content, even over a BLUETOOTH connection. Unlike other BLUETOOTH compatible coding technologies such as SBC, it operates without any down-conversion of the Hi-Res Audio content*7, and allows approximately three times more data*8 than those other technologies to be transmitted over a BLUETOOTH wireless network with expanded bit rate sound quality, by means of efficient coding and optimized packetization.

*7 Expanded bit rate sound quality.

*8 In comparison with SBC when the bitrate of 990 kbps (96/48 kHz) or 909 kbps (88.2/44.1 kHz) is selected.

Note

Depending on the network environment, there may be an interruption at the high bitrate transmission.

Microphone

Type	Electret condenser
Directional characteristic	
Omni directional	
Effective frequency range	100 Hz - 7,000 Hz

Amplifier section

POWER OUTPUT AND TOTAL HARMONIC DISTORTION:
With 4 ohm loads, both channels driven, from 300 Hz – 15,000 Hz; rated 4 watts per channel minimum RMS power at stereo mode, with no more than 1% total harmonic distortion from 250 milliwatts to rated output.

General

Input	AUDIO IN jack (stereo mini jack)
Power	DC 5 V (Using a commercially-available USB AC adaptor capable of feeding in 1.5 A or 500 mA) or, using built-in lithium-ion battery

Lithium-ion battery life (with playback via a BLUETOOTH connection)

- Approx. 12 hours*9 *12
- Approx. 10 hours*10 *12
- Approx. 3 hours*11 *12

Dimensions (including projecting parts and controls)

Approx. 201 mm × 72 mm × 68 mm (8 in × 2 7/8 in × 2 3/4 in) (w/h/d)

Mass Approx. 540 g (19 oz) including battery

Supplied accessory Micro-USB cable (1)

*9 Measured value acquired by playing our specified music source with the volume level of the unit set to 25, the sound mode set to STANDARD, and the illumination turned off.

*10 Measured value acquired by playing our specified music source with the volume level of the unit set to 25 and with the factory default settings (illumination: ON and sound mode: EXTRA BASS).

*11 Measured value acquired by playing our specified music source with the volume level of the unit set to maxim and with the factory default settings (illumination: ON and sound mode: EXTRA BASS).

If the built-in lithium-ion battery is running low, the maximum volume is reduced to about half to protect the circuit. This is a specification.

The usage life mentioned here also includes when playing back music at about half the volume.

*12 Actual performance time may vary from the listed time due to the volume, songs played, surrounding temperature, and usage conditions.

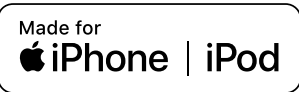
System requirements for charging battery using USB

Using a commercially-available USB AC adaptor capable of feeding in 1.5 A or 500 mA (the charging time will be shorter with a USB AC adaptor capable of feeding in 1.5 A)

Compatible iPhone/iPod models

iPhone X, iPhone 8 Plus, iPhone 8, iPhone 7 Plus, iPhone 7, iPhone SE, iPhone 6s Plus, iPhone 6s, iPhone 6 Plus, iPhone 6, iPhone 5s, iPhone 5c, iPhone 5, iPod touch (6th generation)
The unit is compatible with iOS 10.0 or later.

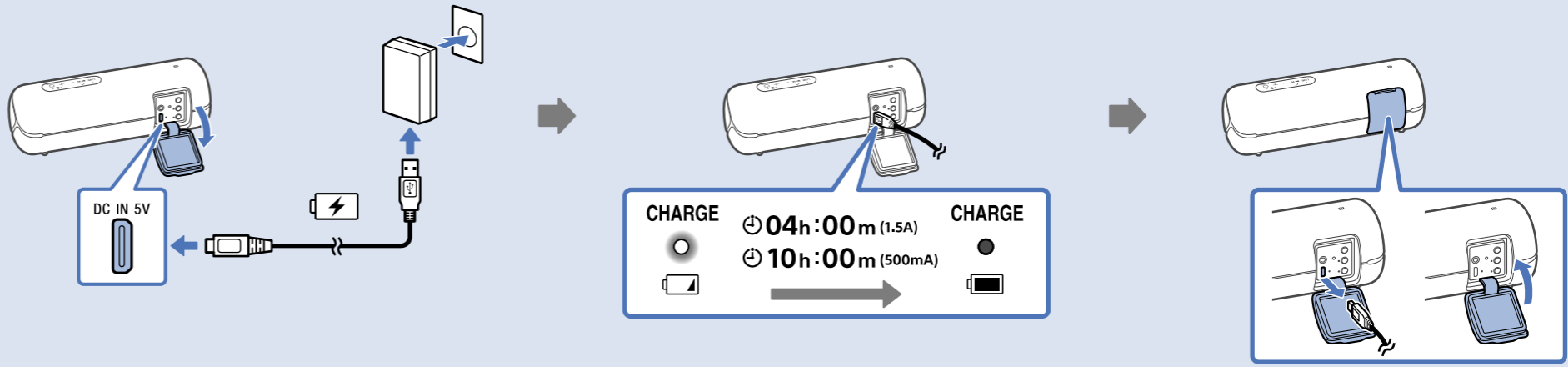
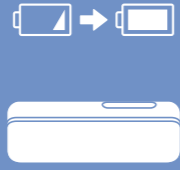
Design and specifications are subject to change without notice.





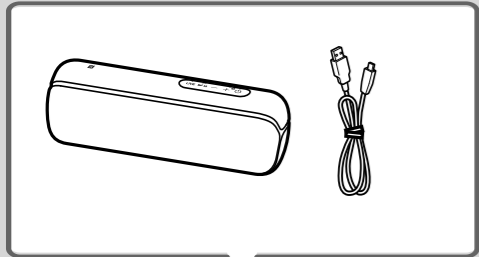
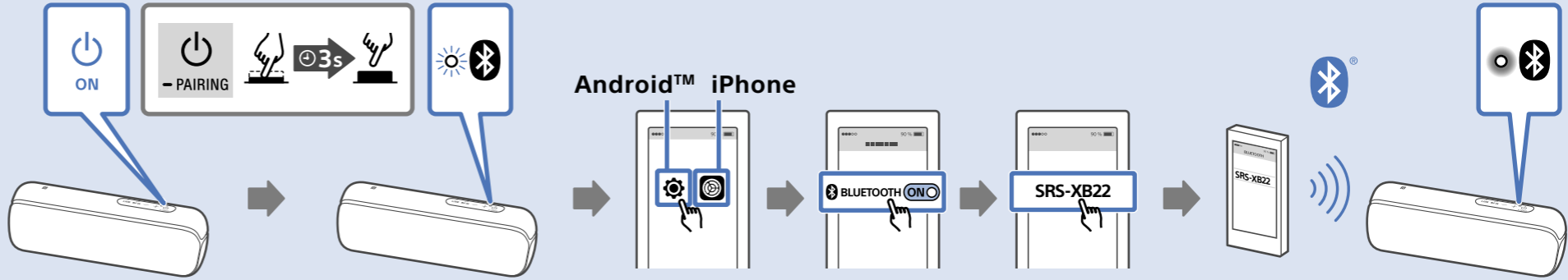
SRS-XB22

1

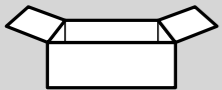


•The image shown here is for illustrative purposes only and may be subject to change. •The actual number of ports and their locations may vary depending on the model.

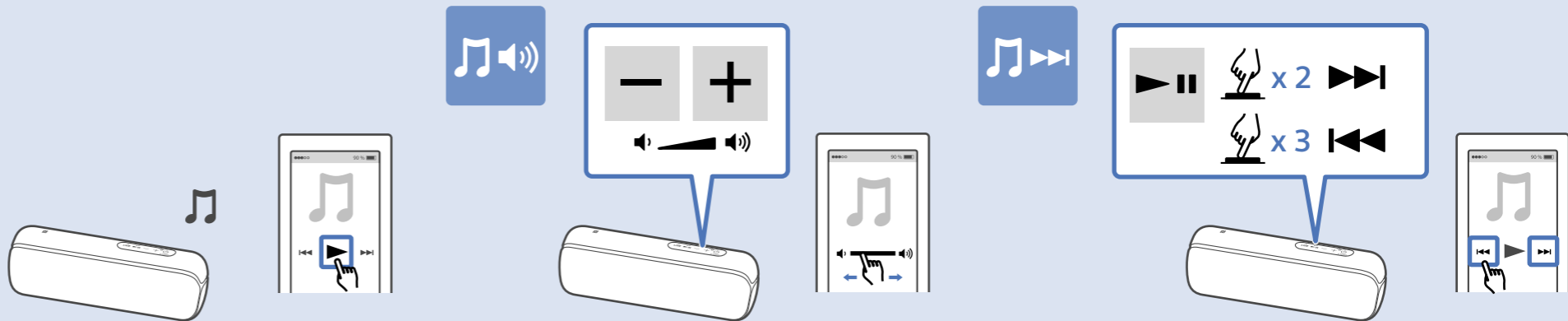
2

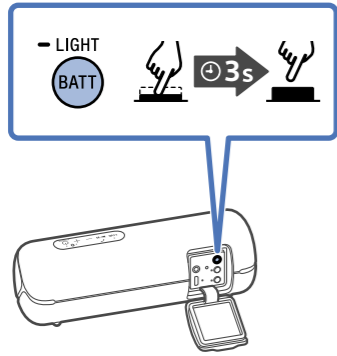


Accessory type and quantity may vary depending on the model.

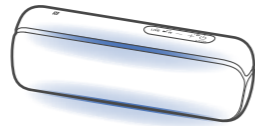


3

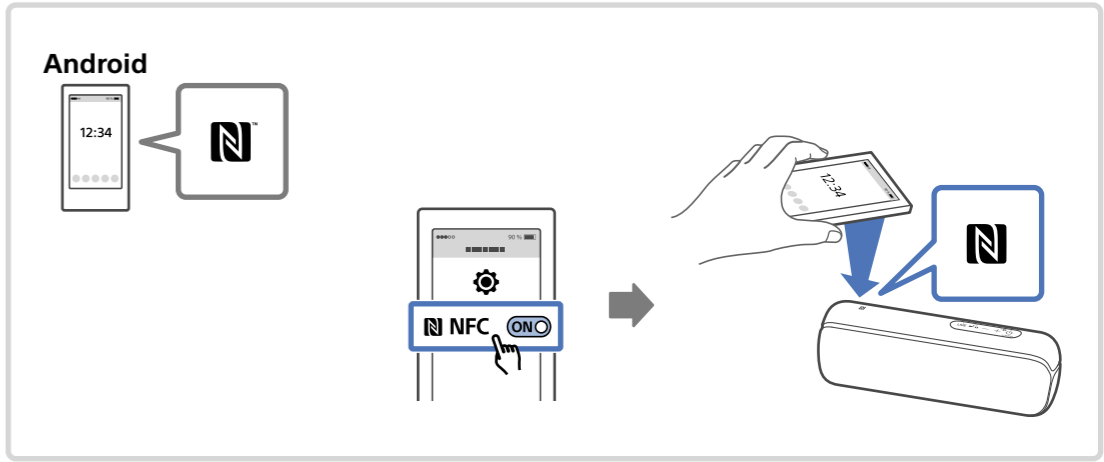
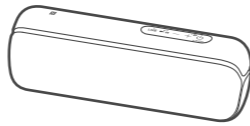




ON



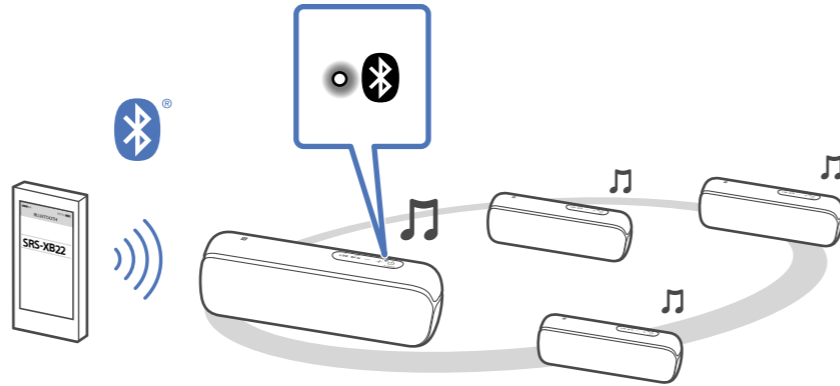
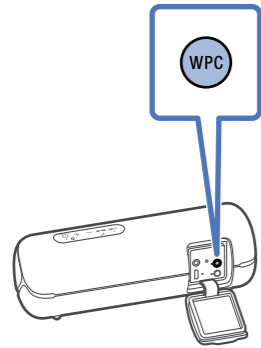
OFF



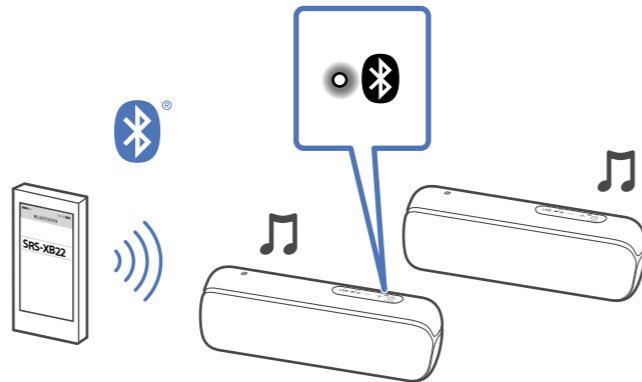
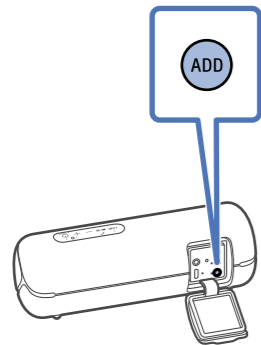
The images shown here are for illustrative purposes only and may be subject to change.



Wireless Party Chain



Speaker Add



PRINTED IN MEXICO
Elbrd: A.M. SC:12-27-2023
MODEL:SRS-XB22 OBPN: N/A

8 0 4 1 0 9 5 7 1

