

### Wireless speaker

Before operating the unit, please read this guide thoroughly and retain it for future reference.

### CAUTION

Do not expose the appliance to naked flame sources (for example, lighted candles). Do not install the appliance in a confined space, such as a bookcase or built-in cabinet.

Do not expose the batteries (battery pack or batteries installed) to excessive heat such as sunshine, fire or the like for a long time.

Do not expose the batteries to extreme low temperature conditions that may result in overheating and thermal runaway. Do not dismantle, open or shred secondary cells or batteries. In the event of a cell leaking, do not allow the liquid to come in contact with the skin or eyes. If contact has been made, wash the affected area with copious amounts of water and seek medical advice. Secondary cells and batteries need to be charged before use. Always use the correct charger and refer to the manufacturer's instructions or equipment manual for proper charging instructions. After extended periods of storage, it may be necessary to charge and discharge the cells or batteries several times to obtain maximum performance. Dispose of properly.

### Do not place this product close to medical devices

This product (including accessories) has magnet(s) which may interfere with pacemakers, programmable shunt valves for hydrocephalus treatment, or other medical devices. Do not place this product close to persons who use such medical devices. Consult your doctor before using this product if you use any such medical device.



### Caution on charging



Inserting the USB plug while it is wet may cause a short circuit due to foreign matter or liquid (tap water, salt water, soft drinks, etc.) getting on the main unit or charging cable. This may cause malfunctions or abnormal overheating.

**Never insert the USB plug while the main unit or charging cable is wet.**

### Precautions

#### On safety

- If your skin touches this product for a long time when the power is on, it may cause a low temperature injury.
- Important information such as the model name is located on the inner and outer surfaces of the cap on the rear side of the unit.

#### On placement

- To eliminate the risk of malfunctions, avoid the following locations when placing or leaving this unit.
  - A place subject to high temperatures, such as under direct sunlight or lighting equipment, near a heat source, or in a sauna
  - Inside a vehicle with the windows closed (especially in summertime)
  - A place subject to excessive dust
  - A place subject to strong vibration

- Place this unit on a flat, level surface. When placed on a sloped surface, the unit may fall over or fall off the surface due to its own vibration, resulting in injuries, malfunctions, or performance degradation.
- Depending on the conditions where this unit is placed, it may fall over or fall off the surface. Do not leave any valuables near the unit.
- This unit is not anti-magnetic. Keep objects susceptible to magnetism (recorded tapes, watches, cash cards and credit cards with magnetic coding, etc.) away from the unit. When you carry around the unit, keep this in mind as well.

#### Others

- Do not use or leave the unit in an extremely cold or hot environment (temperature outside the range of 5 °C - 35 °C (41 °F - 95 °F)). If the unit is used or left in outside the above range, the unit may automatically stop to protect internal circuitry.
- At high temperature, the charging may stop or the volume may reduce to protect the battery.
- Even if you do not intend to use the unit for a long time, charge the battery to its full capacity once every 6 months to maintain its performance.

#### About the Voice Guidance

**IMPORTANT: THE SOUND GUIDANCE IS AVAILABLE IN THIS PRODUCT ONLY IN ENGLISH**  
Depending on the status of the unit, the voice guidance outputs from the unit as follows.

- When entering pairing mode: "BLUETOOTH pairing"
- When establishing a BLUETOOTH connection: "BLUETOOTH connected"
- When disconnecting a BLUETOOTH connection: "BLUETOOTH disconnected"
- When pressing the BATT (battery) button to check the battery power during the unit is turned on: "Battery fully charged/Battery about 70%/Battery about 50%/Battery about 30%/Please charge"
- When pressing and holding the ST PAIR button during the Stereo Pair function: "Left/Right"

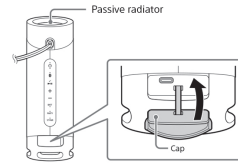
#### On Copyrights

- Android, Google Play and other related marks and logos are trademarks of Google LLC.
- LDAC™ is a trademark of Sony Corporation.
- The BLUETOOTH™ word mark and logos are registered trademarks owned by the Bluetooth SIG, Inc. and any use of such marks by Sony Corporation is under license.
- Apple, the Apple logo, iPhone, iPod and iPod touch are trademarks of Apple Inc., registered in the U.S. and other countries.
- App Store is a service mark of Apple Inc., registered in the U.S. and other countries.
- Use of the Made for Apple badge means that an accessory has been designed to connect specifically to the Apple product(s) identified in the badge, and has been certified by the developer to meet Apple performance standards. Apple is not responsible for the operation of this device or its compliance with safety and regulatory standards.
- USB Type-C® and USB-C® are trademarks of USB Implementers Forum.
- Other trademarks and trade names are those of their respective owners.
- ™ and ® marks are omitted in the documents.

#### To avoid deterioration of waterproof and dust proof performance

Check the following and use the unit correctly.

- The unit passes the drop test from 1.22 m (4 ft) on plywood of 5 cm (2 in) thickness conforming to MIL-STD883B Method 516.8-Shock. However, this does not guarantee no damage, no breakdown, or waterproof and dust proof performance in all conditions. Deformation or damage from dropping the unit or subjecting it to mechanical shock may cause deterioration of the waterproof and dust proof performance.
- This unit does not have a design that is resistant to water pressure. Use of the unit in a location where high water pressure is applied, such as in the shower, may cause a malfunction.
- Do not pour high-temperature water or blow hot air from a hair dryer or any other appliance on the unit directly. Also never use the unit in a place subject to high temperatures, such as in a sauna or near a heat source.
- Handle the cap with care. The cap plays a very important role in maintenance of the waterproof and dust proof performance. When using the unit, make sure that the cap is closed completely. When closing the cap, be careful not to allow foreign objects inside. If the cap is not closed completely the waterproof and dust proof performance may deteriorate and may cause a malfunction of the unit as a result of water or dust particles entering the unit.



#### How to care for the unit

Although the fabric part of the unit has water repellent treatment applied, you can use the unit more comfortably and for a longer period of time by following the maintenance procedure below.

- If the surface of the unit gets dirty in the following cases, wash the unit with fresh water (tap water, etc.) promptly to remove the dirt. Leaving dirt on its surface may cause the fabric part or the passive radiator section to discolor or deteriorate, or the unit to malfunction.
  - When salt, sand, etc. is stuck on the unit after using it on a beach, pool side, etc.
  - When the unit is stained with foreign substances (sunscreen, suntan oil, etc.)
- If the unit gets wet, wipe off the moisture using a dry soft cloth immediately. In addition, dry the unit in an airy place until no moisture remains.
- The sound quality may change when water enters the speaker or passive radiator section of the unit. It is not malfunction. Wipe off the moisture on its surface, and put the unit on a dry soft cloth to drain the collected water inside the unit. Then, dry the unit in an airy place until no moisture remains.

#### Note

- If the surface of the unit gets dirty, do not use detergent, thinner, benzine, alcohol, etc. to clean the unit because it will affect the water repellent function of the fabric part of the unit.
- Especially in cold regions, be sure to wipe off the moisture after using the unit. Leaving moisture on its surface may cause the unit to freeze and malfunction.
- If sand grains, etc. enter the fabric or other part of the unit, remove them carefully. Never use a vacuum cleaner, etc. on the unit. It may cause damage of the speaker section or other part of the unit.

### Specifications

#### Speaker section

Full range unit	Approx. 42 mm x 51 mm (1 1/2 in x 2 1/8 in) (2)
Enclosure type	Passive radiator model

#### BLUETOOTH

Communication System

BLUETOOTH Specification version 5.0

Maximum communication range

Line of sight<sup>\*)</sup> approx. 30 m (98 ft)

Frequency band 2.4 GHz band (2,400 GHz - 2,4835 GHz)

Modulation method FHSS

Compatible BLUETOOTH Profiles<sup>\*)2</sup>

A2DP (Advanced Audio Distribution Profile)

AVRCP (Audio Video Remote Control Profile)

HSP (Headset Profile)

HFP (Hands-free Profile)

Supported Codec<sup>\*)3</sup>

SBC (Subband Codec)

AAC (Advanced Audio Coding)

LDAC

Transmission range (A2DP)

20 Hz - 20,000 Hz (Sampling frequency 44.1 kHz)

<sup>\*)1</sup> The actual range will vary depending on factors such as obstacles between devices, magnetic fields around a microwave oven, static electricity, reception sensitivity, antenna's performance, operating system, software application, etc.  
<sup>\*)2</sup> BLUETOOTH standard profiles indicate the purpose of BLUETOOTH communications between devices.  
<sup>\*)3</sup> Codec: Audio signal compression and conversion format

#### Note

Depending on the network environment, there may be an interruption at the high bitrate transmission.

#### Microphone

Type Electret condenser

Directional characteristic Omni directional

Effective frequency range

100 Hz - 7,000 Hz

#### General

Power DC 5 V (using a commercially-available USB AC adaptor capable of feeding in 1.5 A) or, using built-in lithium-ion battery

Lithium-ion battery life (with playback via a BLUETOOTH connection)

Approx. 12 hours<sup>\*)4</sup> <sup>\*)7</sup>

Approx. 10 hours<sup>\*)5</sup> <sup>\*)7</sup>

Approx. 3 hours<sup>\*)6</sup> <sup>\*)7</sup>

Dimensions (including projecting parts and controls)

Approx. 76 mm (3 in) dia. x 218 mm (8 5/8 in) (H)

Mass Approx. 580 g (1 lb 5 oz) including battery

Supplied accessory USB Type-C™ cable (USB-A to USB-C™ / Max. 1.5 A) (1)

Strap (1) (attached to the unit)

<sup>\*)4</sup> Measured value acquired by playing our specified music source with the volume level of the unit set to 34, the sound mode set to STAMINA.

<sup>\*)5</sup> Measured value acquired by playing our specified music source with the volume level of the unit set to 31 and with the factory default settings (sound mode: EXTRA BASS).

<sup>\*)6</sup> Measured value acquired by playing our specified music source with the volume level of the unit set to maximum and with the factory default settings (sound mode: EXTRA BASS).

<sup>\*)7</sup> Actual performance time may vary from the listed time due to the volume, songs played, surrounding temperature, and usage conditions.

#### System requirements for charging battery using USB

Using a commercially-available USB AC adaptor capable of feeding in 1.5 A

#### Compatible iPhone/iPod models

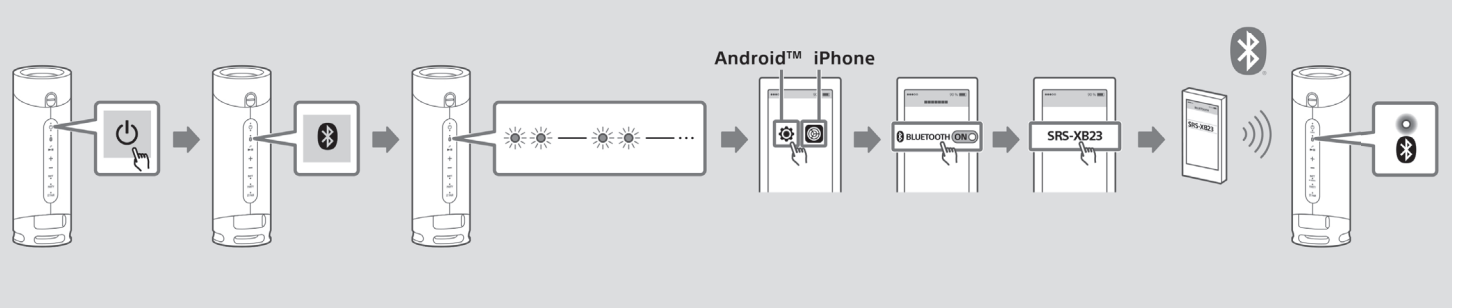
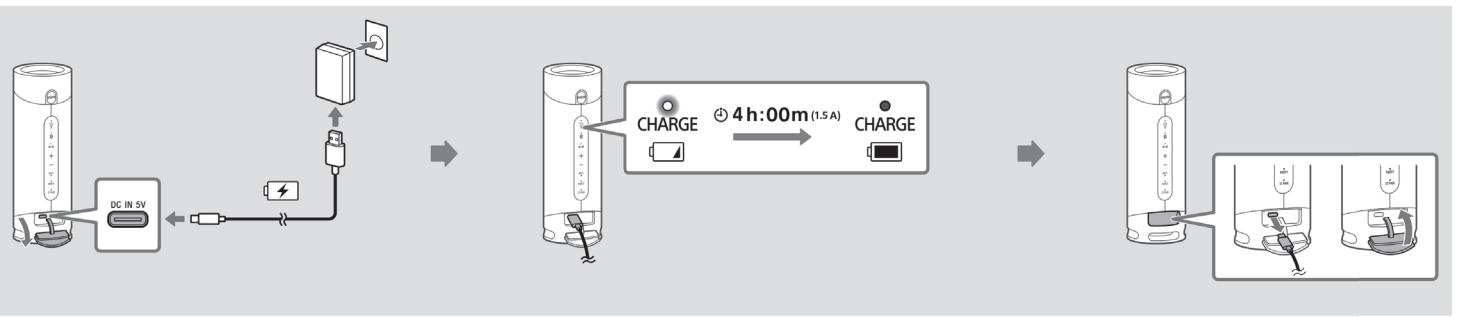
iPhone XS Max, iPhone XS, iPhone XR, iPhone X, iPhone 8 Plus, iPhone 8, iPhone 7 Plus, iPhone 7, iPhone SE, iPhone 6s Plus, iPhone 6s, iPhone 6 Plus, iPhone 6, iPhone 5s, iPod touch (6th generation)

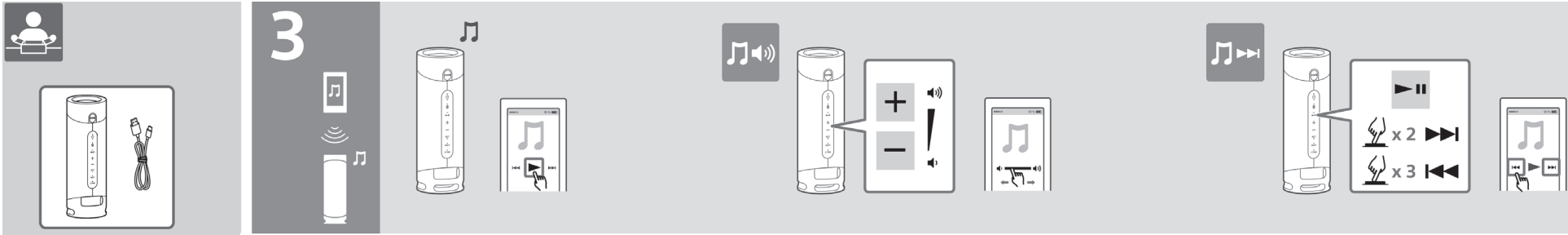
The unit is compatible with iOS 10.0 or later.

Design and specifications are subject to change without notice.

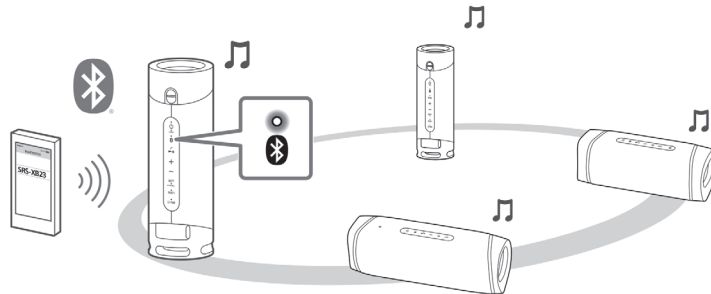
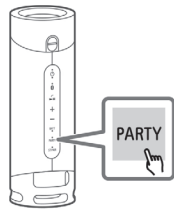


SRS-XB23

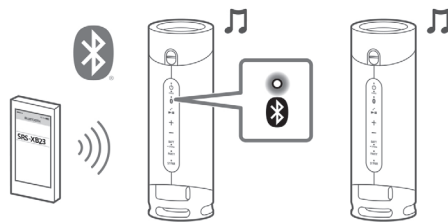
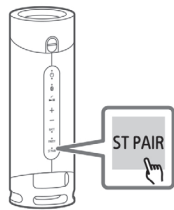




Party Connect



L R



Android / iPhone

<https://www.sony.net/smcapp/>

[https://rd1.sony.net/help/speaker/srs-xb23/h\\_zz/](https://rd1.sony.net/help/speaker/srs-xb23/h_zz/)

NOTE: The image shown here is for illustrative purposes only and may be subject to change.  
The actual descriptions of control panel and their locations may vary, depending on the model.

Accessory type and quantity may vary depending on the model.

The cables mentioned in this guide is not supplied with your unit.

804106570 PRINTED IN MEXICO Elbrd: J.E.  
 OBPN: N/A SC: 01-03-2024\_2P MODEL: SRSXB23\_B