

SONY

Wireless Speaker

Model: SRSXB32

Please read this manual carefully before operating your unit and retain for future reference.

804109570

CAUTION

To reduce the risk of fire, do not cover the ventilation opening of the appliance with newspapers, tablecloths, curtains, etc. Do not expose the appliance to naked flame sources (for example, lighted candles).

Do not install the appliance in a confined space, such as a bookcase or built-in cabinet.

Notice for customers: the following information is only applicable to equipment sold in countries applying EU directives

This product has been manufactured by or on behalf of Sony Corporation.
EU Importer: Sony Europe Limited.

Inquiries to the EU Importer or related to product compliance in Europe should be sent to the manufacturer's authorized representative, Sony Belgium, bijkantoor van Sony Europe Limited, Da Vincilaan 7-D1, 1935 Zaventem, Belgium.

Hereby, Sony Corporation declares that this equipment is in compliance with Directive 2014/53/EU. The full text of the EU declaration of conformity is available at the following internet address: <http://www.compliance.sony.de/>



The validity of the CE marking is restricted to only those countries where it is legally enforced, mainly in the countries EEA (European Economic Area) and Switzerland.



Disposal of waste batteries and electrical and electronic equipment (applicable in the European Union and other countries with separate collection systems)

This symbol on the product, the battery or on the packaging indicates that the product and the battery shall not be treated as household waste. On certain batteries this symbol might be used in combination with a chemical symbol. The chemical symbol for lead (Pb) is added if the battery contains more than 0.004% lead. By ensuring that these products and batteries are disposed of correctly,

you will help to prevent potentially negative consequences for the environment and human health which could be caused by inappropriate waste handling. The recycling of the materials will help to conserve natural resources. In case of products that for safety, performance or data integrity reasons require a permanent connection with an incorporated battery, this battery should be replaced by qualified service staff only. To ensure that the battery and the electrical and electronic equipment will be treated properly, hand over these products at end-of-life to the appropriate collection point for the recycling of electrical and electronic equipment. For all other batteries, please view the section on how to remove the battery from the product safely. Hand the battery over to the appropriate collection point for the recycling of waste batteries. For more detailed information about recycling of this product or battery, please contact your local Civic Office, your household waste disposal service or the shop where you purchased the product or battery.

Do not expose the batteries (battery pack or batteries installed) to excessive heat such as sunshine, fire or the like for a long time.

Do not expose the batteries to extreme low temperature conditions that may result in overheating and thermal runaway. Do not dismantle, open or shred secondary cells or batteries. In the event of a cell leaking, do not allow the liquid to come in contact with the skin or eyes. If contact has been made, wash the affected area with copious amounts of water and seek medical advice. Secondary batteries need to be charged before use. Always refer to the equipment manual for proper charging instructions. After extended periods of storage, it may be necessary to charge and discharge the cells or batteries several times to obtain maximum performance. Dispose of properly.

This equipment has been tested and found to comply with the limits set out in the EMC regulation using a connection cable shorter than 3 meters.



Caution on charging



When the USB plug is inserted in a wet condition, a short circuit occurs due to the liquid (tap water, salt water, refreshing drink etc.) attached to the main unit and charging cable or foreign matter, it may cause abnormal heat generation or malfunction.

Never insert USB plug when the main unit or charging cable is wet condition.

Precautions

On safety

- If your skin touches this product for a long time when the power is on, it may cause a low temperature injury.
- Important information such as the model name is located inside of the cap on the rear side of the unit.

About the Party Booster function

If the unit hits a person or thing, it may cause an accident, injury or malfunction. When using the Party Booster function, notice the following.

- Be sure to disconnect the micro-USB cable, etc. from the unit.
- Be sure to close the cap when using the unit.
- When using the function, hold firmly and do not shake the unit violently so that you do not throw or drop the unit from your hand.
- Before using the function, make sure that you have secured sufficient space around the unit.
- Do not hit the unit with a tool.
- Do not use the function while you are driving or walking.
- Keep 20 cm or more away from the face and eyes while in use.



- Avoid using the function for a long time. Take breaks regularly.
- When using the function, if you get tired, feel uncomfortable or experience pain somewhere in your body, stop using the function immediately.

On placement

- Do not set the unit in an inclined position.
- Do not leave the unit in a place subject to high temperatures, such as direct sunlight, near a heat source or under lighting equipment.
- Do not leave any objects susceptible to magnetism (cash cards, credit cards with magnetic coding, etc.) near the unit.
- Do not use or leave the unit in a car.

Others

- Do not use or leave the unit in an extremely cold or hot environment (temperature outside the range of 5 °C - 35 °C). If the unit is used or left in outside the above range, the unit may automatically stop to protect internal circuitry.
- At high temperature, the charging may stop or the volume may reduce to protect the battery.
- Even if you do not intend to use the unit for a long time, charge the battery to its full capacity once every 6 months to maintain its performance.

On Copyrights

- Android, Google Play and other related marks and logos are trademarks of Google LLC.
- LDAC™ and LDAC logo are trademarks of Sony Corporation.
- The BLUETOOTH® word mark and logos are registered trademarks owned by the Bluetooth SIG, Inc. and any use of such marks by Sony Corporation is under license.
- The N-Mark is a trademark or registered trademark of NFC Forum, Inc. in the United States and in other countries.
- Apple, the Apple logo, iPhone, iPod and iPod touch are trademarks of Apple Inc., registered in the U.S. and other countries.
- App Store is a service mark of Apple Inc., registered in the U.S. and other countries.
- Use of the Made for Apple badge means that an accessory has been designed to connect specifically to the Apple product(s) identified in the badge, and has been certified by the developer to meet Apple performance standards. Apple is not responsible for the operation of this device or its compliance with safety and regulatory standards. Please note that the use of this accessory with an Apple product may affect wireless performance.
- Other trademarks and trade names are those of their respective owners.
- ™ and ® marks are omitted in the documents.

Notes on waterproof and dust proof features (Read before using the unit)

Waterproof and dust proof performance of the unit

The unit, with the cap fastened securely, has a waterproof specification of IPX7*1 as specified in "Degree of protection against water immersion" of the IEC60529 "Ingress Protection Rating (IP Code)"**3, and a dust proof specification of IP6X*2 as specified in "Degrees of protection against solid foreign objects"*3.

Liquids that the waterproof performance specifications apply to

| Applicable | fresh water, tap water, pool water, salt water |
|----------------|------------------------------------------------------------------------------------------------------------------|
| Not applicable | liquids other than the above (soapy water, water with detergent or bath agents, shampoo, hot spring water, etc.) |

*1 IPX7 (Degree of protection against water immersion).

*2 IP6X (Degrees of protection against dust).

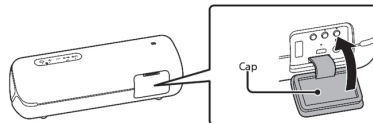
*3 The supplied accessories and the connectors of this unit (USB/AUDIO IN) are neither waterproof nor dust proof.

The waterproof and dust proof performance of the unit is based on our measurements under the conditions herein described. Note that malfunctions as a result of water immersion or dust intrusion caused by misuse by the customer are not covered by the warranty.

To avoid deterioration of waterproof and dust proof performance

Check the following and use the unit correctly.

- The unit passes the drop test from 1.22 m on plywood of 5 cm thickness conforming to MIL-STD 810 F Method 516.5-Shock. However, this does not guarantee no damage, no breakdown, or waterproof and dust proof performance in all conditions. Deformation or damage from dropping the unit or subjecting it to mechanical shock may cause deterioration of the waterproof and dust proof performance.
- This unit does not have a design that is resistant to water pressure. Use of the unit in a location where high water pressure is applied, such as in the shower, may cause a malfunction.
- Do not pour high-temperature water or blow hot air from a hair dryer or any other appliance on the unit directly. Also, never use the unit in high temperature locations such as in saunas or near a stove.
- Handle the cap with care. The cap plays a very important role in maintenance of the waterproof and dust proof performance. When using the unit, make sure that the cap is closed completely. When closing the cap, be careful not to allow foreign objects inside. If the cap is not closed completely the waterproof and dust proof performance may deteriorate and may cause a malfunction of the unit as a result of water or dust particles entering the unit.



How to care for the unit

Although the fabric part of the unit has water repellent treatment applied, you can use the unit more comfortably and for a longer period of time by following the maintenance procedure below.

- If the surface of the unit gets dirty in the following cases, wash the unit with fresh water (tap water, etc.) promptly to remove the dirt. Leaving dirt on its surface may cause the fabric part to discolor or deteriorate, or the unit to malfunction.
Ex.
– When salt, sand, etc. is stuck on the unit after using it on a beach, pool side, etc.
– When the unit is stained with foreign substances (sunscreen, suntan oil, etc.)
- If the unit gets wet, wipe off the moisture using a dry soft cloth immediately. In addition, dry the unit in an airy place until no moisture remains.
- The sound quality may change when water enters the speaker section of the unit. It is not malfunction. Wipe off the moisture on its surface, and put the unit on a dry soft cloth with the fabric part facing down to drain the collected water inside the unit. Then, dry the unit in an airy place until no moisture remains.

Note

- If the surface of the unit gets dirty, do not use detergent, thinner, benzine, alcohol, etc. to clean the unit because it will affect the water repellent function of the fabric part of the unit.
- Especially in cold regions, be sure to wipe off the moisture after using the unit. Leaving moisture on its surface may cause the unit to freeze and malfunction.
- If sand grains, etc. enter the fabric part of the unit, remove them carefully. Never use a vacuum cleaner, etc. on the unit. It may cause damage of the speaker unit.

Specifications

Speaker section

| | |
|----------------|------------------------|
| Speaker system | Approx. 48 mm dia. x 2 |
| Enclosure type | Passive radiator model |

BLUETOOTH

Communication System

BLUETOOTH Specification version 4.2

Maximum communication range

Line of sight approx. 10 m**

Frequency band 2.4 GHz band (2,400 GHz - 2,483.5 GHz)

Modulation method FHSS

Compatible BLUETOOTH Profiles*2

A2DP (Advanced Audio Distribution Profile)
AVRCP (Audio Video Remote Control Profile)
HSP (Headset Profile)
HFP (Hands-free Profile)

Supported Codec*3 SBC*4, AAC*5, LDAC*6

Transmission range (A2DP)

20 Hz - 20,000 Hz (Sampling frequency 44.1 kHz)

Operating frequency / Maximum output power (BLUETOOTH)

2,400 MHz - 2,483.5 MHz / < 9.5 dBm

*1 The actual range will vary depending on factors such as obstacles between devices, magnetic fields around a microwave oven, static electricity, reception sensitivity, aerial's performance, operating system, software application, etc.

*2 BLUETOOTH standard profiles indicate the purpose of BLUETOOTH communications between devices.

*3 Codec: Audio signal compression and conversion format

*4 Subband Codec

*5 Advanced Audio Coding

6 LDAC is an audio coding technology developed by Sony that enables the transmission of High-Resolution (Hi-Res) Audio content, even over a BLUETOOTH connection. Unlike other BLUETOOTH compatible coding technologies such as SBC, it operates without any down-conversion of the Hi-Res Audio content, and allows approximately three times more data** than those other technologies to be transmitted over a BLUETOOTH wireless network with unprecedented sound quality, by means of efficient coding and optimized packetization.

*7 Excluding DSD format contents.

*8 In comparison with SBC when the bitrate of 990 kbps (96/48 kHz) or 909 kbps (88.2/44.1 kHz) is selected.

NFC

Operating frequency 13.56 MHz

Microphone

Type Electret condenser

Directional characteristic Omni directional

Effective frequency range 100 Hz - 7,000 Hz

General

Input AUDIO IN jack (stereo mini jack)

DC OUT USB Jack Type A (for charging the battery of a connected device) (DC 5 V, Max. 1 A)

Power DC 5 V (using a commercially-available USB AC adaptor capable of feeding in 1.5 A) or, using built-in lithium-ion battery

Lithium-ion battery life (with playback via a BLUETOOTH connection)

Approx. 24 hours*9 *12

Approx. 14 hours*10 *12

Approx. 4 hours*11 *12

Dimensions (including projecting parts and controls)

Approx. 238 mm x 85 mm x 83 mm (w/h/d)

Mass Approx. 900 g including battery

Supplied accessory Micro-USB cable (1)

*9 Measured value acquired by playing our specified music source with the volume level of the unit set to 21, the sound mode set to STANDARD, and the illumination turned off.
 *10 Measured value acquired by playing our specified music source with the volume level of the unit set to 21 and with the factory default settings (illumination: ON and sound mode: EXTRA BASS).
 *11 Measured value acquired by playing our specified music source with the volume level of the unit set to maxim and with the factory default settings (illumination: ON and sound mode: EXTRA BASS).
 If the built-in lithium-ion battery is running low, the maximum volume is reduced to about half to protect the circuit. This is a specification.
 The usage life mentioned here also includes when playing back music at about half the volume.
 *12 Actual performance time may vary from the listed time due to the volume, songs played, surrounding temperature, and usage conditions.

System requirements for charging battery using USB
 Using a commercially-available USB AC adaptor capable of feeding in 1.5 A

Compatible iPhone/iPod models
 iPhone X, iPhone 8 Plus, iPhone 8, iPhone 7 Plus, iPhone 7, iPhone SE, iPhone 6s Plus, iPhone 6s, iPhone 6 Plus, iPhone 6, iPhone 5s, iPhone 5c, iPhone 5, iPod touch (6th generation)
 The unit is compatible with iOS 10.0 or later.

Design and specifications are subject to change without notice.

REFURBISHED PRODUCT LIMITED THIRTY DAY WARRANTY

The **Refurbished Product Service Center** offers the following WARRANTY to the ORIGINAL purchaser of a product which we have refurbished. This product that has been refurbished is warranted against any electronic or mechanical defects for a period of THIRTY DAYS from the date of the original purchase by the consumer. Since this unit was sold as a refurbished item, the warranty does not apply to any cosmetic appearance items such as scratches. Should a defect occur, the **Refurbished Product Service Center** will repair or, at its option, replace defective unit/parts with new or rebuilt materials without charge for either parts or labor. Replacement unit/parts will be warranted for the remaining portion of the original warranty period. This warranty does not cover installation or damage from accident, misuse, abuse, improper wiring, incorrect voltage, operating the unit against the instructions in the owner's manual or any product which has been opened, altered, or tampered with. This warranty does not cover costs for removal and or installation of the unit for repair. Under no circumstances shall the service center be liable for any special, incidental or consequential damages or for any other expenses incurred by reason of use or sale of this product. This warranty is in lieu of any other warranties expressed or implied warranty of merchantability of fitness for particular use or otherwise. This warranty gives the consumer specific legal rights and they may also have other rights which vary from State to State. Some States do not follow the exclusion or limitation of incidental or consequential damages, hence the above exclusion and limitations may not apply.

Refurbished Product Service Center
 13225 Marquardt Avenue Santa Fe Springs, CA 90670

WARRANTY REPAIR INFORMATION

If you need service on your unit during the 30 day warranty period; please go to www.ConsumerServiceRefurbish.com or call the Refurbished Product Service Center at 562-946-3531 to obtain the required claim number. Once you obtain your claim number, pack the unit properly (the original carton is ideal for this purpose) along with a copy of your purchase receipt. Send the unit freight prepaid and insured to:

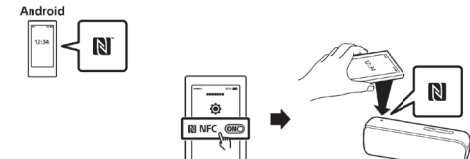
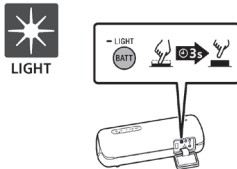
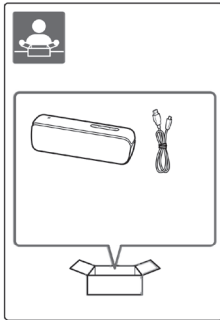
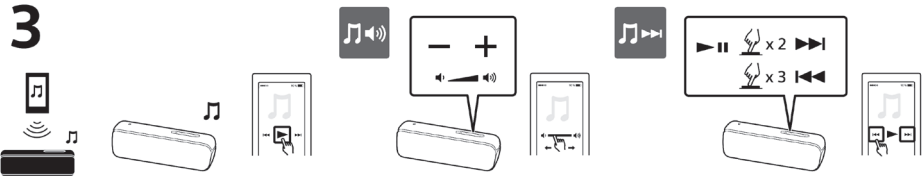
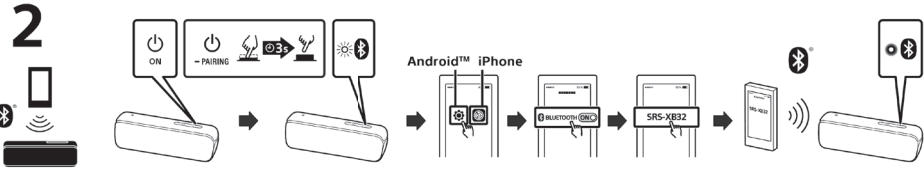
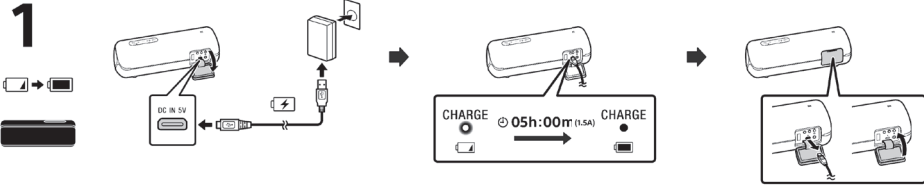
Refurbished Product Service Center,
 Attn: Customer Service Department 13225 Marquardt Avenue Santa Fe Springs, CA 90670

Your unit will be promptly exchanged and returned to you. We will refuse to accept delivery of the returned unit unless the assigned claim number appears on the outside of the shipping carton.

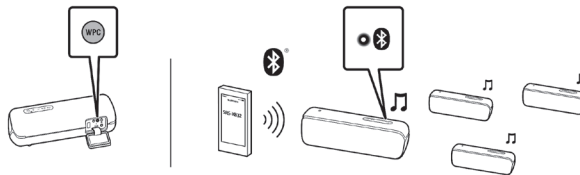
Owner's Information
 (Keep for your permanent records)

NAME: _____
 ADDRESS: _____
 CITY: _____ STATE: _____ ZIP CODE: _____
 PHONE: _____ E-MAIL: _____
 MODEL: _____ SERIAL NO.: _____

SONY.



Wireless Party Chain

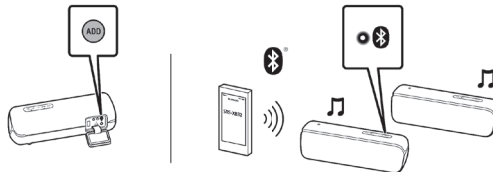


Sony Music Center

Fiestable



Speaker Add



PRINTED IN MEXICO
 SC:02.07.2020 / 2P / Elbrd:J.E.
 OBPN: 4-747-828-11(1)
 SHNMDL:SR5XB32BC_B
 804109570