

Wireless Speaker

Reference Guide

SRS-XB33	804106581
----------	-----------

English Wireless Speaker

Before operating the unit, please read this guide thoroughly and retain it for future reference.

The image shown here is for illustrative purposes only and may be subject to change.

CAUTION

Do not expose the appliance to naked flame sources (for example, lighted candles).
Do not install the appliance in a confined space, such as a bookcase or built-in cabinet.



The validity of the CE marking is restricted to only those countries where it is legally enforced, mainly in the countries EEA (European Economic Area) and Switzerland.



Disposal of waste batteries and electrical and electronic equipment (applicable in the European Union and other countries with separate collection systems)
This symbol on the product, the battery or on the packaging indicates that the product and the battery shall not be treated as household waste. On certain batteries this symbol might be used in combination with a chemical symbol. The chemical symbol for lead (Pb) is added if the battery contains more than 0.004% lead. By ensuring that these products and batteries are disposed of correctly,

you will help to prevent potentially negative consequences for the environment and human health which could be caused by inappropriate waste handling. The recycling of the materials will help to conserve natural resources. In case of products that for safety, performance or data integrity reasons require a permanent connection with an incorporated battery, this battery should be replaced by qualified service staff only. To ensure that the battery and the electrical and electronic equipment will be treated properly, hand over these products at end-of-life to the appropriate collection point for the recycling of electrical and electronic equipment. For all other batteries, please view the section on how to remove the battery from the product safely. Hand the battery over to the appropriate collection point for the recycling of waste batteries. For more detailed information about recycling of this product or battery, please contact your local Civic Office, your household waste disposal service or the shop where you purchased the product or battery.

Do not expose the batteries (battery pack or batteries installed) to excessive heat such as sunshine, fire or the like for a long time. Do not expose the batteries to extreme low temperature conditions that may result in overheating and thermal runaway. Do not dismantle, open or shred secondary cells or batteries. In the event of a cell leaking, do not allow the liquid to come in contact with the skin or eyes. If contact has been made, wash the affected area with copious amounts of water and seek medical advice. Secondary cells and batteries need to be charged before use. Always use the correct charger and refer to the manufacturer's instructions or equipment manual for proper charging instructions. After extended periods of storage, it may be necessary to charge and discharge the cells or batteries several times to obtain maximum performance. Dispose of properly.

Do not place this product close to medical devices

This product (including accessories) has magnet(s) which may interfere with pacemakers, programmable shunt valves for hydrocephalus treatment, or other medical devices. Do not place this product close to persons who use such medical devices. Consult your doctor before using this product if you use any such medical device.

This equipment has been tested and found to comply with the limits set out in the EMC regulation using a connection cable shorter than 3 meters.



Caution on charging



Inserting the USB plug while it is wet may cause a short circuit due to foreign matter or liquid (tap water, salt water, soft drinks, etc.) getting on the main unit or charging cable. This may cause malfunctions or abnormal overheating.

Never insert the USB plug while the main unit or charging cable is wet.

Precautions

On safety

- If your skin touches this product for a long time when the power is on, it may cause a low temperature injury.
- Important information such as the model name is located on the inner surface of the cap on the rear side of the unit.

On placement

- To eliminate the risk of malfunctions, avoid the following locations when placing or leaving this unit.
 - A place subject to high temperatures, such as under direct sunlight or lighting equipment, near a heat source, or in a sauna
 - Inside a vehicle with the windows closed (especially in summertime)
 - A place subject to excessive dust
 - A place subject to strong vibration
- Place this unit on a flat, level surface. When placed on a sloped surface, the unit may fall over or fall off the surface due to its own vibration, resulting in injuries, malfunctions, or performance degradation.
- Depending on the conditions where this unit is placed, it may fall over or fall off the surface. Do not leave any valuables near the unit.
- This unit is not anti-magnetic. Keep objects susceptible to magnetism (recorded tapes, watches, cash cards and credit cards with magnetic coding, etc.) away from the unit. When you carry around the unit, keep this in mind as well.

Others

- Do not use or leave the unit in an extremely cold or hot environment (temperature outside the range of 5 °C – 35 °C). If the unit is used or left in outside the above range, the unit may automatically stop to protect internal circuitry.
- At high temperature, the charging may stop or the volume may reduce to protect the battery.
- Even if you do not intend to use the unit for a long time, charge the battery to its full capacity once every 6 months to maintain its performance.

On Copyrights

- Android, Google Play and other related marks and logos are trademarks of Google LLC.
- LDAC™ and LDAC logo are trademarks of Sony Corporation.
- The BLUETOOTH® word mark and logos are registered trademarks owned by the Bluetooth SIG, Inc. and any use of such marks by Sony Corporation is under license.
- The N-Mark is a trademark or registered trademark of NFC Forum, Inc. in the United States and in other countries.
- Apple, the Apple logo, iPhone, iPod and iPod touch are trademarks of Apple Inc., registered in the U.S. and other countries.
- App Store is a service mark of Apple Inc., registered in the U.S. and other countries.
- Use of the Made for Apple badge means that an accessory has been designed to connect specifically to the Apple product(s) identified in the badge, and has been certified by the developer to meet Apple performance standards. Apple is not responsible for the operation of this device or its compliance with safety and regulatory standards. Please note that the use of this accessory with an Apple product may affect wireless performance.
- USB Type-C® and USB-C® are trademarks of USB Implementers Forum.
- Other trademarks and trade names are those of their respective owners.
- ™ and ® marks are omitted in the documents.

Notes on waterproof and dust proof features (Read before using the unit)

Waterproof and dust proof performance of the unit

The unit, with the cap fastened securely, has a waterproof specification of IPX7^{*1} as specified in "Degree of protection against water immersion" of the IEC60529 "Ingress Protection Rating (IP Code)"^{*2}, and a dust proof specification of IP6X^{*2} as specified in "Degrees of protection against solid foreign objects"^{*3}.

Liquids that the waterproof performance specifications apply to

Applicable	fresh water, tap water, pool water, salt water
Not applicable	liquids other than the above (soapy water, water with detergent or bath agents, shampoo, hot spring water, etc.)

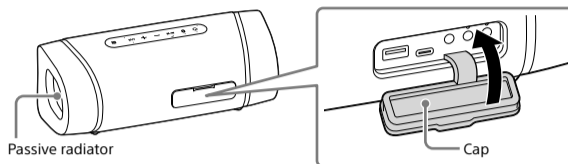
- ^{*1} IPX7 (Degree of protection against water immersion): For details, refer to the Help Guide.
- ^{*2} IP6X (Degrees of protection against dust): For details, refer to the Help Guide.
- ^{*3} The supplied accessories and the connectors of this unit (USB) are neither waterproof nor dust proof. To reduce the risk of fire or electric shocks, do not expose the unit to water or droplets while using either or both of the connectors (USB). Do not place a vase or any other liquid-filled container on the unit.

The waterproof and dust proof performance of the unit is based on our measurements under the conditions herein described. Note that malfunctions as a result of water immersion or dust intrusion caused by misuse by the customer are not covered by the warranty.

To avoid deterioration of waterproof and dust proof performance

Check the following and use the unit correctly.

- The unit passes the drop test from 1.22 m on plywood of 5 cm thickness conforming to MIL-STD810H Method 516.8-Shock. However, this does not guarantee no damage, no breakdown, or waterproof and dust proof performance in all conditions. Deformation or damage from dropping the unit or subjecting it to mechanical shock may cause deterioration of the waterproof and dust proof performance.
- This unit does not have a design that is resistant to water pressure. Use of the unit in a location where high water pressure is applied, such as in the shower, may cause a malfunction.
- Do not pour high-temperature water or blow hot air from a hair dryer or any other appliance on the unit directly. Also never use the unit in a place subject to high temperatures, such as in a sauna or near a heat source.
- Handle the cap with care. The cap plays a very important role in maintenance of the waterproof and dust proof performance. When using the unit, make sure that the cap is closed completely. When closing the cap, be careful not to allow foreign objects inside. If the cap is not closed completely the waterproof and dust proof performance may deteriorate and may cause a malfunction of the unit as a result of water or dust particles entering the unit.



How to care for the unit

Although the fabric part of the unit has water repellent treatment applied, you can use the unit more comfortably and for a longer period of time by following the maintenance procedure below.

- If the surface of the unit gets dirty in the following cases, wash the unit with fresh water (tap water, etc.) promptly to remove the dirt. Leaving dirt on its surface may cause the fabric part or the passive radiator section to discolor or deteriorate, or the unit to malfunction.
 - Ex.
 - When salt, sand, etc. is stuck on the unit after using it on a beach, pool side, etc.
 - When the unit is stained with foreign substances (sunscreen, suntan oil, etc.)
- If the unit gets wet, wipe off the moisture using a dry soft cloth immediately. In addition, dry the unit in an airy place until no moisture remains.
- The sound quality may change when water enters the speaker or passive radiator section of the unit. It is not malfunction. Wipe off the moisture on its surface, and put the unit on a dry soft cloth to drain the collected water inside the unit. Then, dry the unit in an airy place until no moisture remains.

Note

- If the surface of the unit gets dirty, do not use detergent, thinner, benzene, alcohol, etc. to clean the unit because it will affect the water repellent function of the fabric part of the unit.
- Especially in cold regions, be sure to wipe off the moisture after using the unit. Leaving moisture on its surface may cause the unit to freeze and malfunction.
- If sand grains, etc. enter the fabric or other part of the unit, remove them carefully. Never use a vacuum cleaner, etc. on the unit. It may cause damage of the speaker section or other part of the unit.

Notes on the License

This product contains software that Sony uses under a licensing agreement with the owner of its copyright. We are obligated to announce the contents of the agreement to customers under requirement by the owner of copyright for the software. Please access the following URL and read the contents of the license.
<https://rd1.sony.net/help/speaker/sl/20/>



Notice on GNU GPL/LGPL applied software

This product contains software that is subject to the following GNU General Public License (hereinafter referred to as "GPL") or GNU Lesser General Public License (hereinafter referred to as "LGPL"). These establish that customers have the right to acquire, modify, and redistribute the source code of said software in accordance with the terms of the GPL or LGPL supplied. The source code for the above-listed software is available on the Web. To download, please access the following URL then select the model name "SRS-XB33".
URL: <http://oss.sony.net/Products/Linux/>
Please note that Sony cannot answer or respond to any inquiries regarding the content of the source code.

Specifications

Speaker section

Full range unit	Approx. 48 mm × 70 mm (2)
Enclosure type	Passive radiator model

BLUETOOTH

Communication System	BLUETOOTH Specification version 5.0
Maximum communication range	Line of sight approx. 30 m ^{*1}
Frequency band	2.4 GHz band (2.4000 GHz - 2.4835 GHz)
Modulation method	FHSS
Compatible BLUETOOTH Profiles ^{*2}	A2DP (Advanced Audio Distribution Profile) AVRCP (Audio Video Remote Control Profile) HSP (Headset Profile) HFP (Hands-free Profile)
Supported Codec ^{*3}	SBC (Subband Codec) AAC (Advanced Audio Coding) LDAC
Transmission range (A2DP)	20 Hz - 20,000 Hz (Sampling frequency 44.1 kHz)
Operating frequency / Maximum output power (BLUETOOTH)	2,400 MHz - 2,483.5 MHz / < 9.0 dBm

^{*1} The actual range will vary depending on factors such as obstacles between devices, magnetic fields around a microwave oven, static electricity, reception sensitivity, aerial's performance, operating system, software application, etc.

^{*2} BLUETOOTH standard profiles indicate the purpose of BLUETOOTH communications between devices.

^{*3} Codec: Audio signal compression and conversion format

Note

Depending on the network environment, there may be an interruption at the high bitrate transmission.

NFC

Operating frequency	13.56 MHz
---------------------	-----------

Microphone

Type	Electret condenser
Directional characteristic	Omni directional
Effective frequency range	100 Hz - 7,000 Hz

General

DC OUT	USB jack Type A (for charging the battery of a connected device) (DC 5 V, Max. 1 A)
Power	DC 5 V (using a commercially-available USB AC adaptor capable of feeding in 3 A) or, using built-in lithium-ion battery
Lithium-ion battery life (with playback via a BLUETOOTH connection)	Approx. 24 hours ^{*4} ^{*7} Approx. 14 hours ^{*5} ^{*7} Approx. 4 hours ^{*6} ^{*7}
Dimensions (including projecting parts and controls)	Approx. 246 mm × 97 mm × 106 mm (w/h/d)
Mass	Approx. 1.1 kg including battery
Supplied accessory	USB Type-C® cable (USB-A to USB-C® / Max. 1.5 A) (1)

^{*4} Measured value acquired by playing our specified music source with the volume level of the unit set to 36, the sound mode set to STAMINA, and the illumination turned off.

^{*5} Measured value acquired by playing our specified music source with the volume level of the unit set to 35 and with the factory default settings (illumination: ON and sound mode: EXTRA BASS).

^{*6} Measured value acquired by playing our specified music source with the volume level of the unit set to maximum and with the factory default settings (illumination: ON and sound mode: EXTRA BASS).

^{*7} Actual performance time may vary from the listed time due to the volume, songs played, surrounding temperature, and usage conditions.

System requirements for charging battery using USB

Using a commercially-available USB AC adaptor capable of feeding in 1.5 A or 3.0 A^{*8}

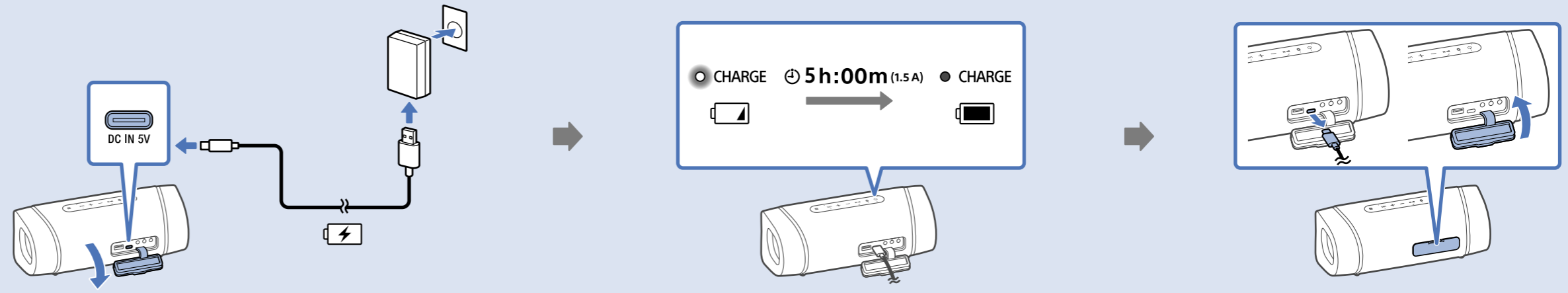
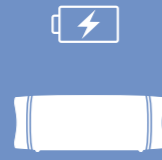
^{*8} When using a USB AC adaptor with an output current of 3.0 A, be sure to use a USB Type-C® cable that conforms to the USB standard and supports an output current of 3.0 A. The supplied USB cable supports an output current of up to 1.5 A.

Compatible iPhone/iPod models

iPhone XS Max, iPhone XS, iPhone XR, iPhone X, iPhone 8 Plus, iPhone 8, iPhone 7 Plus, iPhone 7, iPhone SE, iPhone 6s Plus, iPhone 6s, iPhone 6 Plus, iPhone 6, iPhone 5s, iPod touch (6th generation)
The unit is compatible with iOS 10.0 or later.

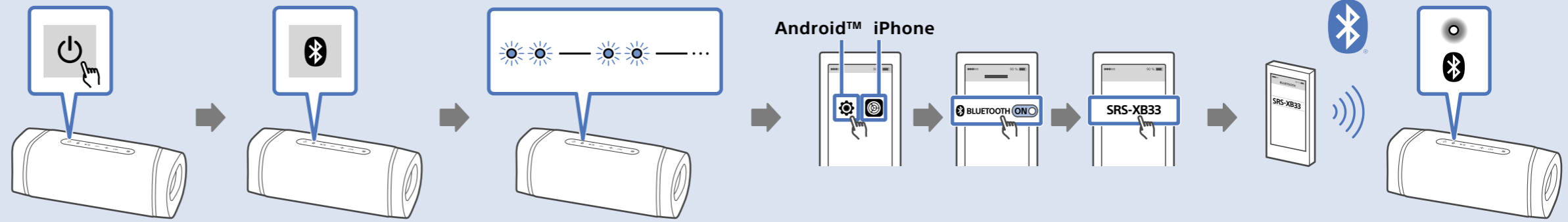
Design and specifications are subject to change without notice.

1

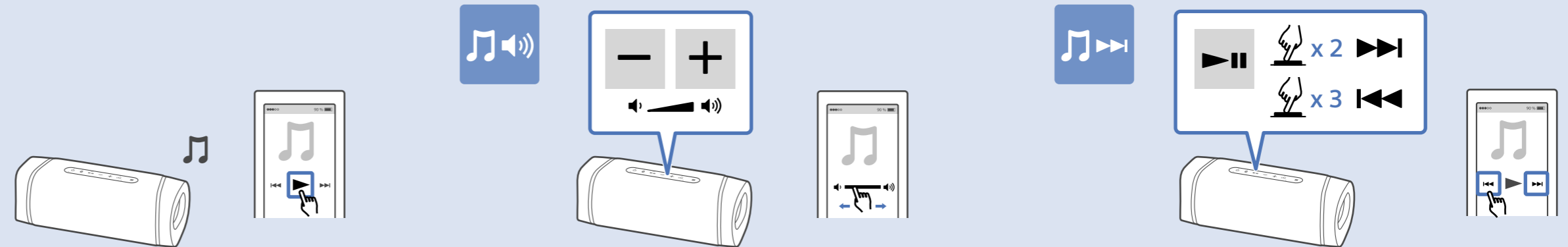


2

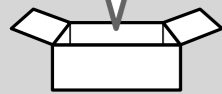
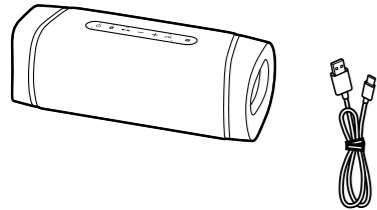
SRS-XB33

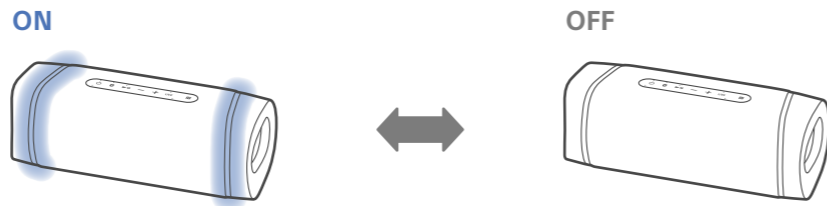
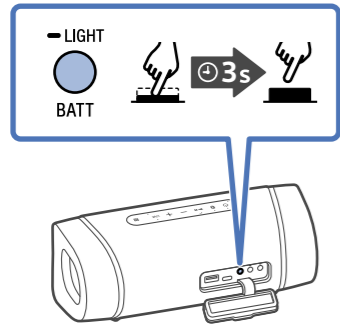


3

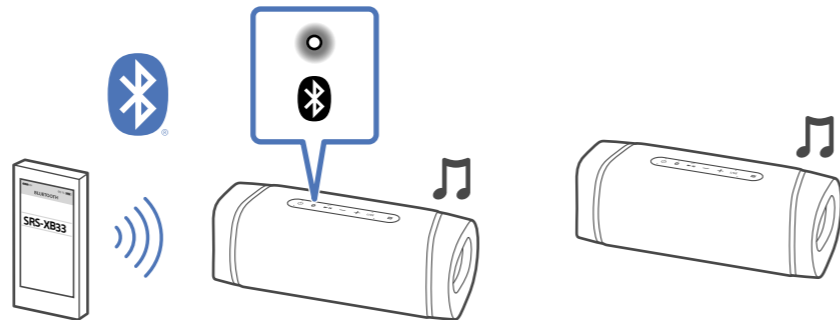
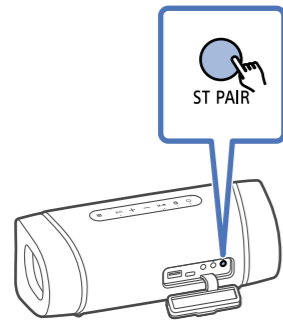
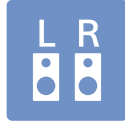
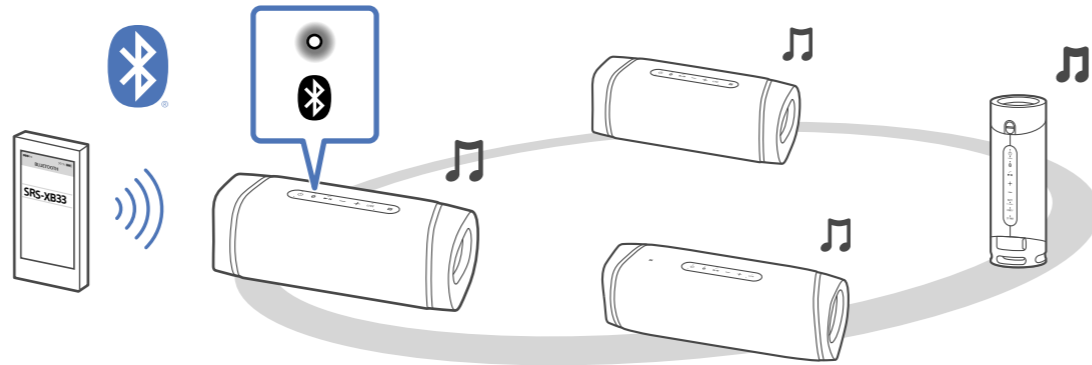
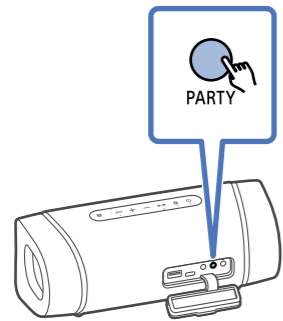
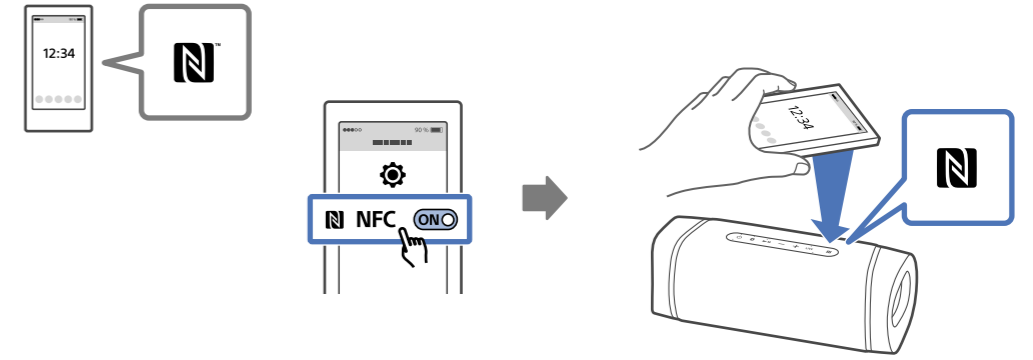


• Accessories may vary depending on the model.





Android



PRINTED IN MEXICO
SC: 12-19-2023 / Elbrd: A.M.
MODEL: SRS-XB33/B / OBPN:5-012-980-11(1) / 5-012-981-21-(1)

8 0 4 1 0 6 5 8 1

