

# TCL Hi! Let's Get Started.

Please read this manual carefully before operating your unit and retain for future reference. 814100089

## IMPORTANT SAFETY INSTRUCTIONS

Before installing and using your air conditioner, please read this owner's manual carefully. Store this manual in a safe place for future reference. Your safety and the safety of others is very important to us. Please pay attention to all safety messages outlined in this owner's manual.

**WARNING:** To reduce the risk of fire, electrical shock or injury when using your air conditioner, follow the following basic precautions: **ELECTRICAL REQUIREMENTS**  
The electrical ratings for your air conditioner are listed on the model and serial number label located on the front right hand side of the unit (when facing the front).

## BATTERY WARNING STATEMENT

Do not mix old and new batteries and do not mix alkaline, standard (carbon-zinc) or rechargeable (ni-cad, ni-mh, etc.) batteries

WARNING		Specific electrical requirements are shown in the diagram below. Follow the requirements below for the type of plug on the power supply cord.
<b>Electrical Shock Hazard</b> Plug into a grounded 3 prong outlet. Do not remove the ground prong. Do not use an adapter. Do not use an extension cord. Failure to follow these instructions can result in death, fire, or electrical shock.	<b>Wiring Requirements</b>	<ul style="list-style-type: none"> <li>• 115 Volt (103 min - 127 max)</li> <li>• (SK-BK) (0-8 amps)</li> <li>• (10K-12K) (0-12 amps)</li> <li>• (5-8K) (10 amp time-delay fuse or circuit breaker)</li> <li>• (10K-12K) (15 amp time-delay fuse or circuit breaker)</li> <li>• Use on single outlet circuit only</li> </ul>
	<b>Power Supply Cord</b>	<p>Ensure proper ground exists before use.</p> <p><b>PREFERRED GROUNDING METHOD</b></p>

## RECOMMENDED GROUND METHOD

For your personal safety, this air conditioner must be grounded. This air conditioner is equipped with a 3 prong power supply cord with a grounded plug. To minimize the possibility of electrical shock, the cord must be plugged into a 3 prong outlet and grounded in accordance with all local codes and ordinances. If a 3 prong outlet is not available, it is the customer's responsibility to have a properly grounded 3 prong outlet installed by a qualified electrician.

## FCC CAUTION

This device complies with part 15 of the FCC Rules. Operation is subject to the following two conditions: (1) This device may not cause harmful interference, and (2) this device must accept any interference received, including interference that may cause undesired operation. Any Changes or modifications not expressly approved by the party responsible for compliance could void the user's authority to operate the equipment.

**Note:** This equipment has been tested and found to comply with the limits for a Class B digital device, pursuant to part 15 of the FCC Rules. These limits are designed to provide reasonable protection against harmful interference in a residential installation. This equipment generates uses and can radiate radio frequency energy and, if not installed and used in accordance with the instructions, may cause harmful interference to radio communications. However, there is no guarantee that interference will not occur in a particular installation.

If this equipment does cause harmful interference to radio or television reception, which can be determined by turning the equipment off and on, the user is encouraged to try to correct the interference by one or more of the following measures:

- Reorient or relocate the receiving antenna.
  - Increase the separation between the equipment and receiver.
  - Connect the equipment into an outlet on a circuit different from that to which the receiver is connected.
  - Consult the dealer or an experienced radio/TV technician for help.
- The distance between user and device should be no less than 20cm.

## DO NOT RETURN TO STORE

## INSTALLATION MANUAL---Important considerations

When compared with other refrigerants, R32 is more environmentally friendly. Please use this product as instructed. This refrigerant is flammable and may combust under certain conditions, however when this product is used as directed these risks are significantly reduced. Always consult with a trained professional when maintaining or repairing an air conditioner.

## Warning

- Please read the manual before installing, using, or conducting maintenance.
- Do not use means to accelerate the defrosting process or to clean, other than those recommended by the manufacturer.
- Be aware that refrigerants may not contain an odor.
- Do not pierce or burn the appliance.
- The appliance shall be stored in a room without continuously operating sources (for example: open flames, an operating ignition gas appliance or an operating electric heater).
- Please contact the nearest after-sale service center when maintenance is necessary. At the time of maintenance, the maintenance personnel must strictly comply with the Operation
- Manual provided by the corresponding manufacturer and any non-professional is prohibited to maintain the air conditioner.
- It is necessary to comply with the provisions of gas-related federal, state, and local laws and regulations.
- It is necessary to clear away the refrigerant in the system when maintaining or recycling an air conditioner by a trained professional.



Warning: flammable & Dangerous



Read the user manual



Read the installation manual



Read the service manual

## Important Considerations

- The air conditioner you buy must be installed by professional personnel and the "Installation manual" is used only for the professional installation personnel!
- The installation specifications should be subject to our after-sale service regulations.
- When filling the flammable refrigerant, please use caution to avoid serious injury.
- A leak test must be done after the installation is completed.
- It is a must to perform the safety inspection before maintaining or repairing an air conditioner using flammable refrigerant in order to ensure that the fire risk is reduced to a minimum.
- Requirements for the total weight of filled refrigerant and the area of a room to be equipped with an air conditioner (are shown as in the following Tables GG.1 and GG.2)



## The maximum charge and the required minimum floor area

$m1 = (4 \text{ m}^3) \times \text{LFL}$ ,  $m2 = (26 \text{ m}^3) \times \text{LFL}$ ,  $m3 = (130 \text{ m}^3) \times \text{LFL}$   
Where LFL is the lower flammable limit in kg/m<sup>3</sup>, R290 LFL is 0.038 kg/m<sup>3</sup>, R32 LFL is 0.038 kg/m<sup>3</sup>.

## For the appliances with a charge amount $m1 < M = m2$ :

The maximum charge in a room shall be in accordance with the following:  $m_{max} = 2.5 \times (\text{LFL}) \times (5/4) \times h_0 \times (A)^{1/2}$   
The required minimum floor area  $A_{min}$  to install an appliance with refrigerant charge  $M$  (kg) shall be in accordance following:  $A_{min} = (M / (2.5 \times (\text{LFL}) \times (5/4) \times h_0))^2$   
Where:

$m_{max}$  is the allowable maximum charge in a room, in kg;  
 $M$  is the refrigerant charge amount in appliance, in kg;  
 $A_{min}$  is the required minimum room area, in m<sup>2</sup>;  
 $A$  is the room area, in m<sup>2</sup>;  
 $LFL$  is the lower flammable limit, in kg/m<sup>3</sup>;  
 $h_0$  is the installation height of the appliance, in meters for calculating  $m_{max}$  or  $A_{min}$ , 1.8 m for wall mounted;

Table GG.1 - Maximum charge (kg)

Category	LFL (kg/m <sup>3</sup> )	h <sub>0</sub> (m)	Floor area (m <sup>2</sup> )						
			4	7	10	15	20	30	50
R32	0,306	0,6	0,68	0,9	1,08	0,32	1,53	1,87	2,41
		1	1,14	1,51	1,8	2,2	2,54	3,12	4,02
		1,8	2,05	2,71	3,24	3,97	4,58	5,61	7,254
		2,2	2,5	3,31	3,96	4,85	5,6	6,86	8,85

Table GG.2 - Minimum room area (m<sup>2</sup>)

Category	LFL (kg/m <sup>3</sup> )	h <sub>0</sub> (m)	Charge amount (M) (kg)						
			1,224 kg	1,836 kg	2,448 kg	3,672 kg	4,896 kg	6,12 kg	7,956 kg
R32	0,306	0,6	29	51	116	206	321	543	
		1	10	19	42	74	116	196	
		1,8	3	6	13	23	36	60	
		2,2	2	4	0	15	24	40	

## Installation Safety Principles

### 1. Site Safety

Open Flames Prohibited



Ventilation Necessary



### 2. Operation Safety

Mind Static Electricity



Open Flames Prohibited

Must wear protective clothing and anti-static gloves



Don't use mobile phone



### 3. Installation Safety

- Refrigerant Leak Detector
- Appropriate Installation Location



The left picture is the schematic diagram of a refrigerant leak detector.

## Please note that:

- The installation site should be in a well-ventilated area.
- The sites for installing and maintaining an air conditioner using Refrigerant R32 should be free from open fire or welding, smoking, drying oven or any other heat source higher than 548 °C which easily produces open fire.
- When installing an air conditioner, it is necessary to take appropriate anti-static measures such as wear anti-static clothing and/or gloves.
- Installation or maintenance location should not be surrounded by obstacles or close to any heat source, flammable, and/or explosive areas or objects.
- If the product suers refrigerant leak during the installation, all personnel should go out till the refrigerant leaks completely for 15 minutes. If the product is damaged, a professional must carry such damages product back to the maintenance station. It is prohibited to weld the refrigerant pipe or conduct other operations on the contaminated site.
- The air conditioner unit needs to sit on a flat even surface.
- It is necessary to avoid the places where there are other electrical products, power switch plugs and sockets, kitchen cabinet, bed, sofa and other valuables directly under the lines on two sides of the indoor unit.
- Any ventilation openings of unit should be free from obstructions.

## What's in the Box

## 5K - 14K Units

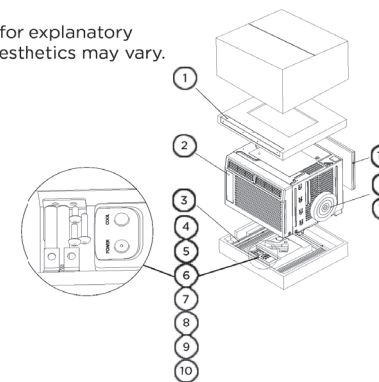
Open the carton and remove the below parts.

NO.	APPEARANCE	PART NAME
1		Top Rail
2		AC Unit
3		Filler Panels (labeled "Left" & "Right")
4		Remote Control (Digital Display Units Only)
5		Sash Lock
6		Lock Frame
7		3/8" Screws
8		1/2" Screws
9		3/4" Screws
10		Window Sash Seal

• Accessory type, appearance and quantity may vary depending on the model.

**Note:** Illustrations in this manual are for explanatory purposes only. Product design and aesthetics may vary.

**Tip!** Before unboxing, cut the tape along the top of the box to loosen contents inside. Once you lift and remove the box, check the inside of the box as some parts may be stuck at the top. You can find the screws and other parts located in the tray beneath the AC unit.



## Let's get started!

### Step 1: Testing

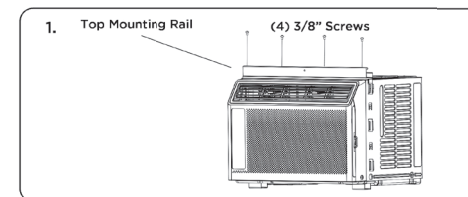
Before installing your AC, let's test it to make sure it works properly and your outlet has the proper power level. First, place it on a flat surface, plug it directly into a wall outlet (never use a power strip or other device), and turn it on. Next, use the Mode button on your control panel to change the AC to Cool Mode and press the down arrow to set the temperature to the lowest setting. After 3 minutes, the AC should be blowing cool air. If so, please continue to the next step. If not, see detailed troubleshooting tips at support.tcl.com/us.

### Step 2: Installation

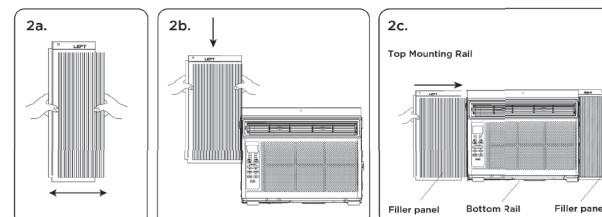
#### A few quick notes before installing:

- This unit is made to fit inside a standard double-hung window.
- Check the size of your window before installing.

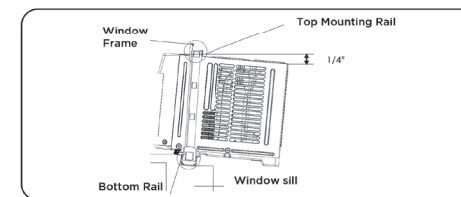
- Use the (4) included 3/8" screws to fasten the top mounting rail to the unit.



- Fasten the accordion styled window panel expander pieces to the unit (some models come with the panel extenders already attached). They are marked "Right" and "Left". Pull the leading edge of them to its maximum width. Then slide the panel expanders into the grooved notches on the sides of the unit. (slide downward) and make sure they are inserted into the metal rails tightly.



- Carefully place the window air conditioner into the window where it is to be installed (2 people are recommended for this step). Close the window securely. The AC unit should be slightly tilted to the outside area to allow water to drain out from the unit.



- Fasten the air conditioner to the window frame, using the included 1/2" screws. Fasten each of the panel extenders (Left and Right). You may have to drill a pilot hole in the window frame to fasten these screws to the window sash.

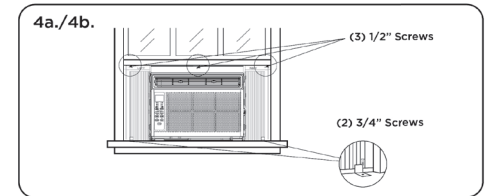
## IMPORTANT INFORMATION



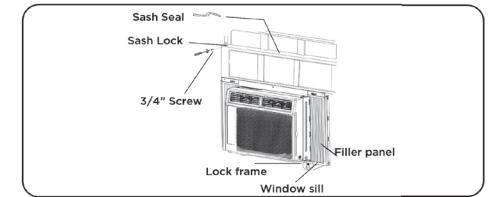
Do not drill holes in the product. Drilling holes in the product can cause the air conditioner to not function properly.

- The image shown here is for illustrative purposes only and may be subject to change.

- Attach the lock frame between the panel extender and the window sill and then fasten them together with the included 3/4" locking screw. Repeat for each side.



- Attach the sash lock between the top of the sliding window and window frame, using 1 of the included 3/4" screws to secure the window closed.



- Plug the unit into the electrical outlet as specified above in the electrical requirements. Set the unit to Cool Mode.

## How to Control Your AC (Batteries Not Included)

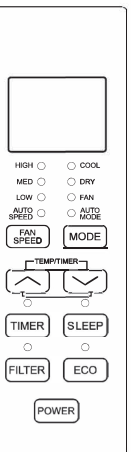
All the basics you need to know to stay cool!

- Power** - turn the air conditioner on and off.
- ^ and v Buttons** - use these buttons on the control panel or remote control to increase or decrease the desired temperature, or time using the Timer. The temperature range is: 61 -88 degrees Fahrenheit or 16 - 31 degrees Celsius. Press for v three seconds to exit the Demand Response (DR) signal.
- Display** - By pressing the Display button on the remote, it can switch off/on all lights and LED Display. When the timer is not in use, the operation mode and the set temperature will be displayed. Time will be displayed under the timer setting. It would display dr when the device is responding to a Demand Response (DR) signal.
- Modes** - Press the mode button on the control panel to cycle and select a Mode, or select a Mode by pressing the desired button on the remote.
  - **Auto Mode** - The unit automatically chooses the mode of operation (cool or fan). In this mode the temperature will be set according to the room temperature (tested by the temperature sensor which is incorporated in the indoor unit).
  - **Cool Mode** - The cooling function allows the air conditioner to cool the room and reduce air humidity at the same time. Adjust the fan speed and temperature to your desired comfort level. In this mode, if Eco is not enabled, the fan may continue to run after reaching the desired temperature.
  - **Eco Mode** - In Eco mode, the unit will turn off once the room is cooled to the user-set temperature. The unit will turn back on when the room temperature rises above the user-set temperature. While in Eco mode, the fan will occasionally turn on for a few seconds in order to take an accurate temperature reading. (Cool/Dry mode only)
  - **Fan Mode** - Fan Mode helps to circulate air in your home, but only works when the air conditioner is vented.
  - **Fan Speed** - Press the Fan Speed button to choose the fan speed options. You can choose Hi, Med, Lo or auto speed in cool mode and choose Hi, Med, Lo in fan mode.
  - **Dry Mode** - This function reduces the humidity of the air to make the room more comfortable. Press the Mode button to set to Dry mode. An automatic function of alternating cooling cycles and air fan is activated.
- Timer Button** - press the Timer button on the panel or the Timer button on the remote to set the timer.
  - **Set Timer On:** With the AC off, press the Timer button and then use the ^ and v buttons to set the desired temperature. Press the Timer button again and use the ^ and v buttons to set the desired amount of time before the AC turns on. Press the timer button again to start the countdown.
  - **Set Timer Off:** With the AC on, press the Timer button and then use the ^ and v buttons to set the length of time before the AC will turn off. Press the timer button again to start the countdown.

**Note:** It can be set to automatically turn off or on in 0.5-24 hours. Each press of the buttons will increase or decrease the timer. The Timer can be set in 0.5 hours increment below 10 hours and 1-hour increments for 10 hours or above.

The Set light will turn on while setting. To cancel the set function, press the Timer button again.

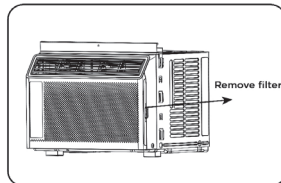
The remote control vary depend of model. The buttons on the remote control may have a different name or location than the remote control shows in this manual.



- Sleep Button** - In Sleep mode, all of the display lights will turn off after a while, but the Sleep light stays on. In Sleep mode, the air conditioner will automatically adjust the temperature and fan speed to make the room more comfortable during the night.
- Filter Button** - After the fan motor runs for 500 total hours, the Filter Check light will turn on to remind the user to clean the filter. After you clean the filter, you can turn off the light by pressing the Filter button.

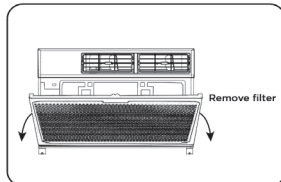
#### 5-6K BTU AC

Remove the filter by sliding it out of the front right side of the air conditioner. Gently wash it with a mild dish washing detergent and let dry completely before reinstalling it into the AC.



#### 8-14K BTU AC

Remove the filter by removing the air intake grille using the two notches on the top left and right side of the grille cover. Once the grille is removed, you can then remove the filter. Gently wash it with a mild dish washing detergent and let dry completely before reinstalling it into the AC.



#### Normal Operating Sounds

You may hear a ping noise, caused by the water hitting the condenser on rainy days, or when the humidity is high. This design feature helps remove moisture and increase efficiency. You may hear the thermostat click when the compressor cycles on and off. Water will collect in the base pan on rainy days, or high humidity days. The water may overflow and drip from the unit on the outside. The fan may run, even when the compressor is not on.

## Troubleshooting

Having trouble completing installation? Don't worry, it's usually an easy fix.

PROBLEM	POSSIBLE CAUSES	SOLUTIONS
<b>Air Conditioner will not start</b>	The air conditioner is unplugged	• Make sure the air conditioner is plug is pushed completely into the outlet
	The fuse is blown/circuit breaker is tripped	• Check the house fuse/circuit breaker box and replace the fuse or reset the breaker
	Power Failure	• The unit will automatically re-start when power is restored • There is a protective time delay (approx. 3 minutes) to prevent damage to the compressor. For this reason, the unit may not start normal cooling for 3 minutes after it is turned back on.
	The current interrupter device is tripped	• Press the RESET button located on the power cord plug • If the RESET button will not stay engaged, discontinue use of the air conditioner and contact a qualified service technician.
<b>Air Conditioner does not cool as it should</b>	Airflow is restricted	• Make sure there are no curtains, blinds, or furniture blocking the front of the air conditioner
	The temperature control may not be set correctly	• Lower the set thermostat temperature
	The air filter is dirty	• Clean the filter. See the Cleaning and Care Section of the manual
	The room may be too warm	• Please allow time for the room to cool down after turning on the air conditioner
	Cold air is escaping	• Check for open furnace registers and cold air returns
The Cooling Coils are frozen	• See "Air Conditioner Freezing Up" below	
<b>Air Conditioner is freezing up</b>	Ice blocks the air flow and stops the air conditioner from cooling the room	• Set the Mode to High Fan or High Cool and set the thermostat to a higher temperature
<b>Remote Control is not working</b>	The batteries are inserted incorrectly	• Check the position of the batteries
	The batteries may be dead	• Replace the batteries (not included)
<b>Water is dripping outside</b>	Hot and humid weather	• This is normal
<b>Water is dripping inside the room</b>	The air conditioner is not correctly tilted outside	• For proper water drainage, make sure the air conditioner is slightly tilted downward from the front of the unit to the rear
<b>Water collects in the base pan</b>	Moisture removed from the air is draining into the base pan	• This is normal for a short period in areas with low humidity and normal for a longer period in areas with high humidity
<b>Digital Display reads "E1", "E2"</b>	A sensor has failed	• Contact a service center.
<b>The buzzer responds abnormally</b>	Energy management systems are controlling devices through networks	• Disconnect the device from the network
<b>When  appear on the display, remote control, APP and panel buttons can not control the device</b>	When the device is responding to the Demand Response (DR) signal of the energy management system, the user can only control the device startup and light, the setting temperature may rise and the compressor may stop running.	• Wait for the Response time to close, or press  for three seconds to exit the Demand Response (DR) signal.

## WiFi App Installation (for WiFi models only)

### Step 1: Download and Install the TCL Home App

Using the camera function on your smartphone, scan the QR code below to be directed to the TCL Home page. If your phone does not have a QR scanner, download one from the app store or manually type in the URL below in your smartphone's web browser. Then, download and launch the app.

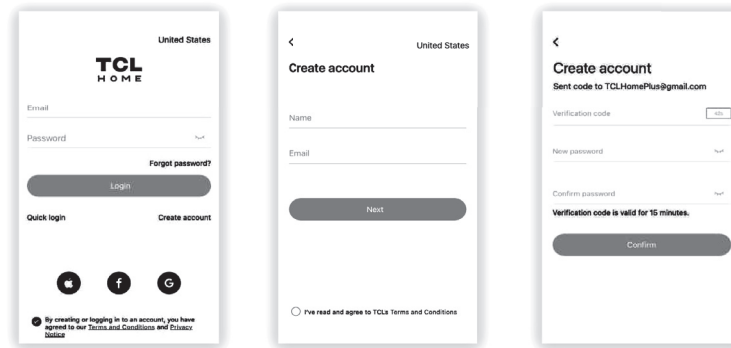


<https://tcl.link/homeplusapp>

**Note:** The App only supports the 2.4 GHz WiFi band (all routers have a 2.4 GHz band).  
**Please connect to the 2.4 GHz band before you begin the app setup process.**

### Step 2: Create an Account

Once you have opened the app, select "Create account." You will then be sent a verification code to your email. Input the code and continue.



### Step 3: Add Your Device

Select the "Add Devices" button and follow the in-app instructions to complete the setup.

## Troubleshooting

Having trouble completing installation? Don't worry, it's usually an easy fix.

PROBLEM	POSSIBLE CAUSES	SOLUTIONS
<b>TCL Home App loses connectivity to AC during setup</b>	Wireless router may be too far from AC	• Relocate wireless router closer to AC.
	Network error	• Restart wireless router, AC, and mobile device.
<b>TCL Home App cannot find AC</b>	Network error	• Restart wireless router, AC, and mobile device.
	App & AC are not on the same 2.4GHz channel	• Confirm your device is connected to the 2.4GHz channel.
	Router blocking TCL Home App	• Verify App is not being blocked by the router's firewall.
	Incorrect WiFi Password	• Reinput and verify WiFi password.
<b>Unable to find or connect to Wireless Network</b>	App may need permission to location	• Give TCL Home App permission to Location in phone settings.

PRINTED IN MEXICO  
Elbrd: J.E. / TAB / SC: 07-25-2023  
OBPN: XL-81101-013910  
MODEL: W8W9E2B3\_B



## REFURBISHED PRODUCT LIMITED THIRTY DAY WARRANTY

The **Refurbished Product Service Center** offers the following WARRANTY to the ORIGINAL purchaser of a product which we have refurbished.

This product that has been refurbished is warranted against any electronic or mechanical defects for a period of THIRTY DAYS from the date of the original purchase by the consumer. Since this unit was sold as a refurbished item, the warranty does not apply to any cosmetic appearance items such as scratches. Should a defect occur, the **Refurbished Product Service Center** will repair or, at its option, replace defective unit/parts with new or rebuilt materials without charge for either parts or labor. Replacement unit/parts will be warranted for the remaining portion of the original warranty period.

This warranty does not cover installation or damage from accident, misuse, abuse, improper wiring, incorrect voltage, operating the unit against the instructions in the owner's manual or any product which has been opened, altered, or tampered with.

This warranty does not cover costs for removal and or installation of the unit for repair. Under no circumstances shall the service center be liable for any special, incidental or consequential damages or for any other expenses incurred by reason of use or sale of this product. This warranty is in lieu of any other warranties expressed or implied warranty of merchantability of fitness for particular use or otherwise.

This warranty gives the consumer specific legal rights and they may also have other rights which vary from State to State. Some States do not follow the exclusion or limitation of incidental or consequential damages, hence the above exclusion and limitations may not apply.

**Refurbished Product Service Center**  
**13225 Marquardt Avenue Santa Fe Springs, CA 90670**

## WARRANTY REPAIR INFORMATION

If you need service on your unit during the 30 day warranty period; please go to [www.ConsumerServiceRefurbish.com](http://www.ConsumerServiceRefurbish.com) or call the Refurbished Product Service Center at 562-946-3531 to obtain the required claim number. Once you obtain your claim number, pack the unit properly (the original carton is ideal for this purpose) along with a copy of your purchase receipt.

Send the unit freight prepaid and insured to:

**Refurbished Product Service Center,**  
**Att: Customer Service Department 13225 Marquardt Avenue Santa Fe Springs, CA 90670**  
Your unit will be promptly exchanged and returned to you.

We will refuse to accept delivery of the returned unit unless the assigned claim number appears on the outside of the shipping carton.

**Owner's Information**  
(Keep for your permanent records)

NAME: \_\_\_\_\_

ADDRESS: \_\_\_\_\_

CITY: \_\_\_\_\_

STATE: \_\_\_\_\_

ZIP CODE: \_\_\_\_\_

PHONE: \_\_\_\_\_

E-MAIL: \_\_\_\_\_

MODEL: \_\_\_\_\_

SERIAL NO.: \_\_\_\_\_