

# Hisense

## USE AND INSTALLATION INSTRUCTIONS

Please read this manual carefully before operating your unit and retain for future reference.

### CAUTION

- Contact a service center technician for repair or maintenance of this unit.
- The air conditioner is not intended for use by young children or infirm persons without supervision.
- Young children should be supervised to ensure that they do not play with the air conditioner.
- If the power cord needs to be replaced, please contact a service center.
- Electrical installation must be performed in accordance to national regulation standards by qualified personnel only.

Please read through these instructions before you start the installation process. Improper installation can cause damage to the unit, your personal property, and also poses a personal safety hazard.

### WARNINGS (for using R32 refrigerant only)

- Do not use any means to accelerate the defrosting process or to clean the unit, other than those recommended by the manufacturer.
- Do not use or store the appliance in spaces with potential ignition sources (for example: open flames, an operating gas appliance or an operating electric heater).
- Do not pierce or burn refrigerant tubing. Be aware that refrigerants may not contain an odor.
- Keep ventilation openings clear of obstruction.
- Store the appliance in a way that will prevent mechanical damage from occurring.
- Store the appliance in a well-ventilated area where the room size corresponds to the room area as specified for operation.
- Any person who is involved with working on or breaking into a refrigerant circuit should hold a current valid certificate from an industry-accredited assessment authority, which authorizes their competence to handle refrigerants safely in accordance with an industry recognized assessment specification.
- Servicing shall only be performed as recommended by the equipment manufacturer. Maintenance and repair requiring the assistance of other skilled personnel shall be carried out under the supervision of the person competent in the use of flammable refrigerants.
- Flammable refrigerant (R32) is used within the air conditioner. please follow the instruction carefully to avoid any hazard. For specific information on the type of gas and the amount, please refer to the relevant label on the unit itself.
- When maintaining or disposing of the air conditioner, the refrigerant (R32) shall be recovered properly, do not discharge to air directly.

To prevent injury to the user or other people and property damage, the instructions shown here must be followed. Incorrect operation due to ignoring of instructions may cause harm or damage. The level of risk is shown by the following indications.

Please read through these instructions before you start the installation process. Improper installation can cause damage to the unit, your personal property, and also poses a personal safety hazard.

- Installation must be performed according to the installation instructions. Improper installation can cause water leakage, electrical shock, or fire.

- Use only the included accessories and parts, and specified tools for the installation. Using non-standard parts can cause water leakage, electrical shock, fire, and injury or property damage.
- Make sure that the outlet you are using is grounded and has the appropriate voltage. The power cord is equipped with a three-prong grounding plug to protect against shock. Voltage information can be found on the side of the unit, behind the grille.
- Install the unit on a flat, sturdy surface. Failure to do so could result in damage or excessive noise and vibration.

- The unit must be kept free from obstruction to ensure proper functioning and to mitigate safety hazards.
- DO NOT modify the length of the power cord or use an extension cord to power the unit. DO NOT share a single outlet with other electrical appliances. Improper power supply can cause fire or electrical shock.

- DO NOT install your air conditioner in a wet room such as a bathroom or laundry room. Exposure to water can cause electrical components to short circuit.
- DO NOT install the unit in a location that may be exposed to combustible gas, as this could cause fire.

- The unit has wheels to facilitate moving. Do not attempt to roll the unit across thick carpet or to roll over objects, as this could cause the unit to tip over.
- DO NOT attempt to operate a unit that has been dropped or damaged.
- DO NOT allow children to play with the air conditioner. Children must be supervised around the unit at all times.

- If the air conditioner is knocked over during use, turn off the unit and unplug it from the main power supply immediately. Visually inspect the unit to ensure there is no damage. If you suspect the unit has been damaged, contact a technician or customer service for assistance.

- In a thunderstorm, the unit should be turned off to avoid damage to the machine due to lightning.
- This appliance is not intended for use by persons (including children) with reduced physical, sensory or mental capabilities or lack of experience and knowledge, unless they have been given supervision or instruction concerning use of the appliance by a person responsible for their safety.

- If the power cord is damaged, it must be replaced by the manufacturer, its service agent or similarly qualified persons in order to avoid a hazard.

- Prior to cleaning or other maintenance, the appliance must be disconnected from the supply mains.
- Do not install the appliance in a location that may be exposed to combustible gas. If combustible gas accumulates around the unit, it may cause fire.

- Do not run the power cord under carpeting. Do not cover cord with throw rugs, runners, or similar coverings. Do not route cord under furniture or appliances. Arrange cord away from traffic area and where it will not be tripped over.

- To reduce the risk of fire or electric shock, do not use this air conditioner with any solid-state speed control device.

- The appliance shall be installed in accordance with national wiring regulations.
- Contact a service center technician for repair or maintenance of this unit.

- Contact a service center installer for installation of this unit.

- When there are significant differences between features or operation implied by the remote control illustration and the actual functions described in the USER MANUAL, the descriptions in the USER MANUAL shall prevail.

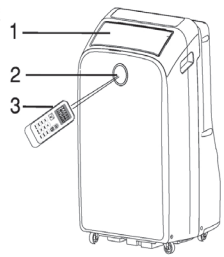
- Do not mix old and new batteries.
- Do not mix alkaline, standard (carbon-zinc), or rechargeable (ni-cad, ni-mh, etc.) batteries.



Caution: Risk of fire/flamable materials  
(Required for R32/R290 units only)

### IDENTIFICATION OF PARTS

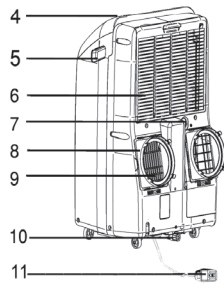
#### • Front



The images shown here are for illustrative purposes only and may be subject to change.

- 1 Cool air outlet
- 2 Signal receptor
- 3 Remote control
- 4 Control panel
- 5 Transport handle
- 6 Evaporator air intake
- 7 Secondary drain port
- 8 Air outlet hose coupling
- 9 Condenser air intake
- 10 Primary drain port
- 11 Power supply (May differ from the one shown)

#### • Back



The figures in this manual are based on the external view of a standard model.

They may differ from that of the air conditioner you have selected.

	<b>CAUTION</b>	This symbol shows that the operation manual should be read carefully.
	<b>CAUTION</b>	This symbol shows that a service personnel should be handling this equipment with reference to the installation manual.
	<b>CAUTION</b>	This symbol shows that information is available such as the operating manual or installation manual.

### AIR CONDITIONER SAFETY

#### Your safety and the safety of others is very important.

We have provided many important safety messages in this manual and on your appliance. Always read and obey all safety messages.

This is the safety alert symbol. This symbol alerts you to potential hazards that can kill or hurt you and others. All safety messages will follow the safety alert symbol and either the word "DANGER" or "WARNING". These words mean:

- DANGER** A hazard that if not avoided will result in death or serious injury.
- WARNING** A hazard that if not avoided could result in death or serious injury.

All safety messages will tell you what the potential hazard is and tell you how to reduce the chance of injury.

#### IMPORTANT SAFETY INSTRUCTIONS

- To reduce the risk of fire, electrical shock or injury when using your air conditioner, follow these basic precautions:
  - Plug into a grounded 3 prong outlet.
  - Do not use an extension cord.
  - Do not remove ground prong.
  - Do not use an electrical adapter.
  - Unplug air conditioner before servicing.
  - Use two or more people to move and install air conditioner.
- The appliance is not intended for use by persons (including children) with reduced physical, sensory or mental capabilities, or lack of experience and knowledge, unless they have been given supervision or instruction concerning use of the appliance by a person responsible for their safety. Children should be supervised to ensure that they do not play with the appliance.

#### SAVE THESE INSTRUCTIONS

#### STORAGE AND DISPOSING OF THE UNIT

- Please recycle or dispose of the packaging material for product in an environmentally responsible manner.
- Never store or ship the air conditioner upside down or sideways to avoid damage to the compressor.
- Dispose of this appliance in accordance with Federal and Local regulations. Refrigerants must be evacuated before disposal.

### INSTALLATION REQUIREMENTS

#### Tools and Parts

Gather the required tools and parts before starting installation.

- Tools needed (Not included)**
  - Phillips screwdriver
  - Scissors
  - Pencil
  - Cordless drill and 1/8" bit
- Parts supplied** Check that all parts are included in parts package.
  - Accessory type and quantity may vary depending on the model.

Part	Description	Part	Description
	A. Foam seal		G. Window-lock bracket
	B. Coupling		H. Outer slider section with vent
	C. Flexible exhaust hose		I. Inner slider section
	D. Window exhaust adaptor		J. Outer slider section
	E. Rivets		K. Foam seal-long
	F. Screws		L. Foam seal-short

### Electrical Requirements

#### WARNING



#### Electrical Shock Hazard

Plug into a grounded 3 prong outlet. Do not remove ground prong. Do not use an adapter. Do not use an extension cord. Failure to follow these instructions can result in death, fire, or electrical shock.

#### Recommended Grounding Method

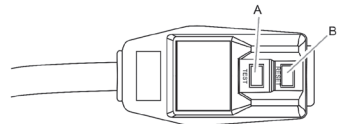
This portable air conditioner must be grounded. This portable air conditioner is equipped with a power supply cord with a three-prong grounding plug. The cord must be plugged into a mating, grounded three-prong outlet, grounded in accordance with all local codes and ordinances. If a mating outlet is not available, it is the customer's responsibility to have a properly grounded three-prong outlet installed by a qualified electrical installer.

#### Wiring requirement

115 V (103.5 min. to 120.5 max.)

15 A time-delay fuse or circuit breaker

#### Power Supply Cord



A Test button  
B Reset button

#### NOTES:

Your air conditioner's device may differ from the one shown. This room air conditioner is equipped with a power supply cord required by UL. This power supply cord contains state-of-the-art electronics that sense leakage current. If the cord is crushed, the electronics detect leakage current and power will be disconnected in a fraction of a second.

#### To test your power supply cord:

1. Plug power supply cord into a grounded 3 prong outlet.
2. Press RESET (on some devices, a green light will turn on).
3. Press TEST (listen for click; Reset button will trip, and on some devices, a green light will turn off).
4. Press and release RESET (listen for click; Reset button will latch, and on some devices, a green light will turn on). The power supply cord is ready for operation.

#### NOTES:

- The Reset button must be pushed in for proper operation.
- The power supply cord must be replaced if it fails to trip when the test button is pressed or fails to reset.
- Do not use the power supply cord as an on/off switch. The power supply cord is designed as a protective device.
- A damaged power supply cord must be replaced with a new power supply cord obtained from the product manufacturer and must not be repaired.
- The power supply cord contains no user serviceable parts. Opening the tamper-resistant case voids all warranty and performance claims.

### Location Requirements

#### NOTES:

- The flexible exhaust hose allows placement of the air conditioner at least 20" from window or door.
- Confirm you are using the correct size air conditioner for the space to be cooled, per sizing recommendations, below:

Area to be cooled	DOE Capacity needed(BTUs)
10'x 20' Room	200 sq ft. 5,000/5,500
Up to 15'x 20' Room	300 sq ft. 6,000/6,500
Up to 20' x 20' Room	400 sq ft. 7,000/7,500
Up to 20' x 25' Room	500 sq ft. 8,000/8,500
Up to 20' x 30' Room	600 sq ft. 9,000/9,500
Up to 20' x 35' Room	700 sq ft. 10,000

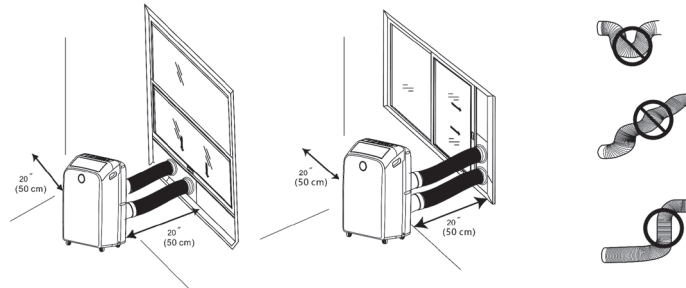
#### NOTES: Match BTUs to room use and location:

- Shaded room reduce to next smaller size
- Sunny room increase to next larger size
- For kitchens, increase to next larger size

### WARNING

The length of the exhaust hose is specially designed according to the specification of the product. Do not replace or extend, or otherwise modify the hose.

Vertical Sliding Window Horizontal Sliding Window



#### NOTE:

- For best performance, allow at least 20 in of air space on all sides of the unit for good air circulation.
- Do not block the air outlet.
- Provide easy access to the grounded 3 prong outlet.
- To ensure proper function, DO NOT overextend or bend the hose. Make sure that there is no obstacle around the air outlet of the exhaust hose in order to the exhaust system works properly. All the illustrations in this manual are for explanation purpose only. Your air conditioner may be slightly different. The actual shape shall prevail.

### INSTALLATION INSTRUCTIONS

#### Unpack the Air Conditioner

#### WARNING

#### Excessive Weight Hazard

Use two or more people to move and install air conditioner. Failure to do so can result in back or other injury.

#### Remove packaging materials

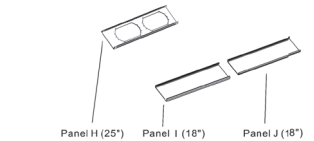
- Remove and recycle packaging materials.

Caution: Installation accessories are stored in the top of the carton, and are required for proper cooling performance. Please remove all accessories from packing materials before use.

### Window Vent Panel And Extensions

The window installation kit allows you to install the air conditioner in most vertical-sliding windows 25" to 50" wide, or horizontal sliding windows from 25" to 50" tall.

Window Length	Panel Length	H	I	J	Fig.
25"	25"	✓	✓	✓	a
25"-42"	18"	✓	✓	✓	b
43"-50"	18"	✓	✓	✓	c



Note: Slider cutting may be needed to fit the width or height of the window.

1. Please check your window size and choose the fit from the above table. For window openings shorter than 25", trim panel H to fit the opening.
2. If your window size requires more than 2 panels, after adjusting the length, please secure the panels with rivets, E.

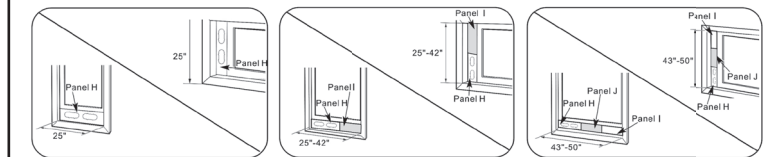


Fig. "a"

Fig. "b"

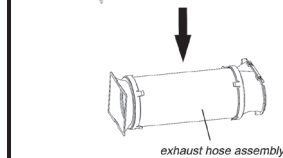
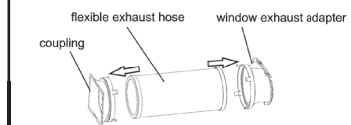
Fig. "c"

### Install The Portable Air Conditioner

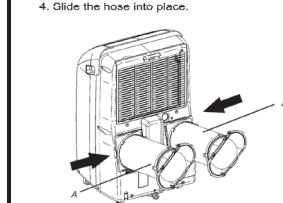
#### Install Exhaust Hose and Adapter

1. Roll the air conditioner to selected location. see "Location Requirements."

2. Preparing the exhaust hose assembly: Press the flexible exhaust hose into the coupling and the window exhaust adapter. Both the coupling and window exhaust adapter have integral clips that snap onto the hose.



3. Insert the coupling into the slot on the back of the air conditioner.



4. Slide the hose into place.

5. Confirm the hose is locked in place before operating.

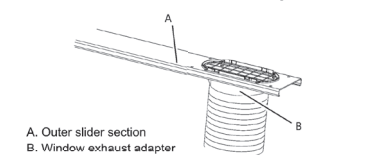
**CAUTION:** Ensure the coupling is correctly locked in place by trying to move it up and down by hand. If there's any movement of the coupling, then it isn't locked, and won't provide normal cooling performance. Only extend the hose to the necessary length, keeping it as short as possible. We do not recommend extending the hose more than 9' long.

#### Window Installation

Your window installation kit has been designed to fit most standard vertical and horizontal window applications. Roll the air conditioner to selected location. see "Location Requirements."

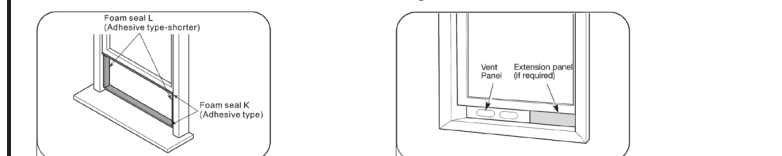
1. Attach the window exhaust adapter to the outer slider section (the piece with the large exhaust hole).

**NOTE:** Product must be used with included Duct Window installation kit for effective cooling.



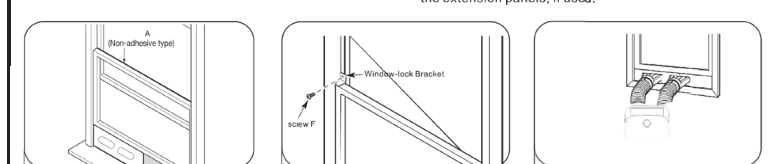
A. Outer slider section  
B. Window exhaust adapter

**NOTE:** The window installation kit can be used with vertical sliding windows between 25" and 50" wide.



1. Cut the foam seal K (adhesive type) & L (adhesive type-shorter) to the proper length, and attach it to the window sash and frame.

2. Insert the vent panel assembly, including extension panels, if needed, into the window opening. Extend the extension panels, if used.



3. Cut the foam seal A (Non-adhesive type) to the window width. Stuff the foam seal A between the glass and the window to prevent air and foreign objects from getting into the room.

4. Install the Window-lock bracket with a type F screw as shown if you need.

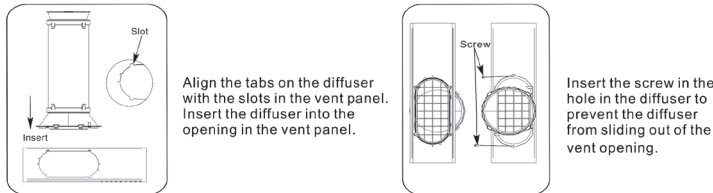
5. Insert the diffuser into the opening in the vent panel and slide it to lock it into place.

PRINTED IN MEXICO  
Elbrd: J.M SC: 02-19-2024  
OBPN: 2109853-01  
SHDML: AP70020HRIGD\_B

804109911





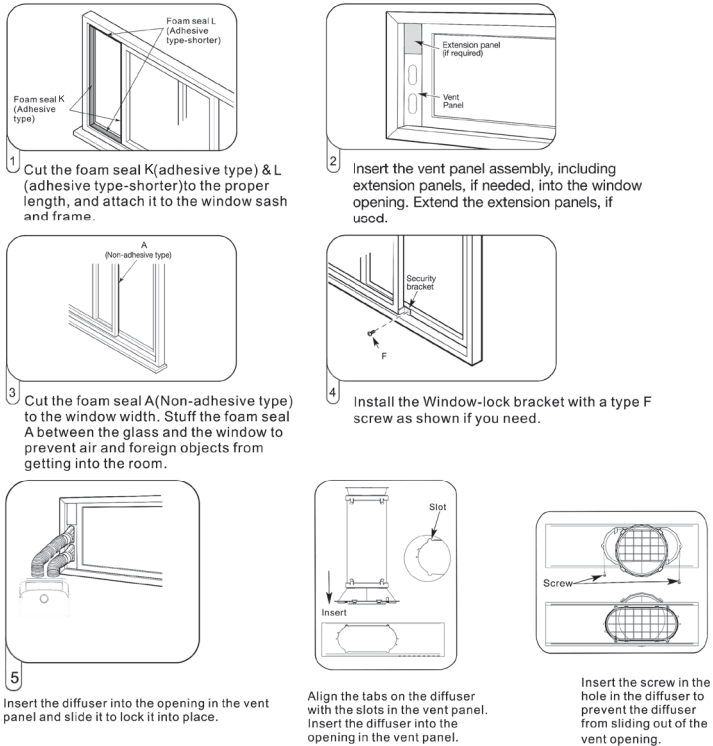


Align the tabs on the diffuser with the slots in the vent panel. Insert the diffuser into the opening in the vent panel.

Insert the screw in the hole in the diffuser to prevent the diffuser from sliding out of the vent opening.

### Installation In Horizontal Sliding Windows

**NOTE:** The window installation kit can be used with horizontal sliding windows between 25" and 50" wide.



## PORTABLE AIR CONDITIONER USE

Operating your portable air conditioner properly helps you to obtain the best possible results. This section explains proper air conditioner operation.

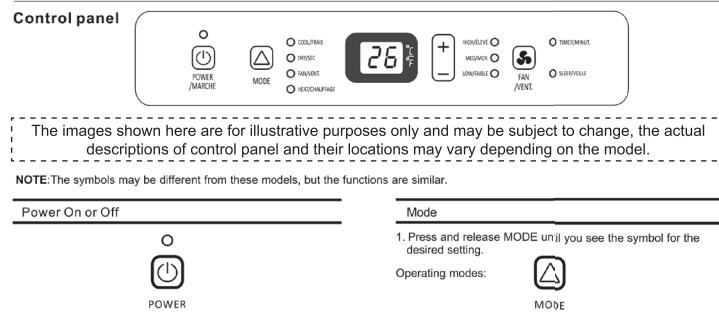
### IMPORTANT:

- Do not stay in direct airflow from the air conditioner for extended periods of time.
- Never use in tightly enclosed spaces. Always ensure there is sufficient airflow of outside air entering the household especially when used in conjunction with combustible devices such as gas stoves, fireplaces, furnaces, hot water heaters etc. Do not place the power cord or air conditioner near a heater, radiator, stoves or other apparatus (including amplifiers) that produce heat.
- This air conditioner is intended for household use as a residential appliance. Do not use it as a precision climate control for commercial use, or for precision equipment, food, pets, plants, artwork, etc.

- Do not block or obstruct the exhaust vent hose as it may severely affect performance, or cause failure of the air conditioner.
- The air conditioner display shows the current room temperature.
- When changing modes while the air conditioner is in operation, the compressor will stop for 3 to 5 minutes before restarting. If a button is pressed during this time, the compressor will not restart for another 3 to 5 minutes.
- In Cooling or Dry mode, the compressor and condenser fan will stop when the room temperature reaches the set temperature.
- On Dry mode, the humidity level is automatically set, but is not able to be displayed.

**NOTE:** In the event of a power failure, your air conditioner will operate at the previous settings when the power is restored.

### Starting Your Portable Air Conditioner



**NOTE:** The symbols may be different from these models, but the functions are similar.

- Power On or Off**
- Press the POWER button to turn the air conditioner on or off.
- Mode**
1. Press and release MODE until you see the symbol for the desired setting.
- Operating modes:
- COOL:** Cool-Cools the room. Press FAN to select High, Mid or Low speeds. Press the Plus or Minus button to adjust the temperature.
  - DRY:** Dries the room. The air conditioner automatically selects the temperature. The fan runs on Low speed only. Dehumidification ranges between 2 to 3 pints per hour, by model.

**NOTE:** Dry mode should not be used to cool the room.

- DRY** ○
- Fan Only mode. Press FAN to select High, Mid or Low.
- FAN** ○
- Heat-heats the room. Press FAN to select High, Mid or Low speeds. Press the PLUS or MINUS button to adjust the temperature.
- HEAT (Optional)** ○
- WIFI control is available for connected models with this logo on control panel.
- WiFi (Optional)** WiFi ○

### Fan Speed

- Press and release FAN to choose the desired fan speed.
- Choose High, Mid or Low.
  - High-for maximum fan speed
  - Mid-for normal fan speed
  - Low-for minimum fan speed

## Using the Remote Control

### Insert the Batteries

- Remove the battery cover along the arrowed direction.
- Insert new batteries making sure that the (+) and (-) of battery are matched correctly.
- Re-attach the cover by sliding it back into position.

### NOTES:

- Use 2 standard AAA(1.5volt) batteries. Do not use rechargeable batteries.
- Replace batteries with new ones of the same type when the display becomes dim, or after 6 months.
- When replacing batteries, always replace both batteries with new batteries. Do not mix old and new batteries. Do not mix alkaline, standard (carbon-zinc), or rechargeable (ni-cd, ni-mh, etc.) batteries.
- If the air conditioner will not be used for an extended period of time, remove the batteries from the remote.

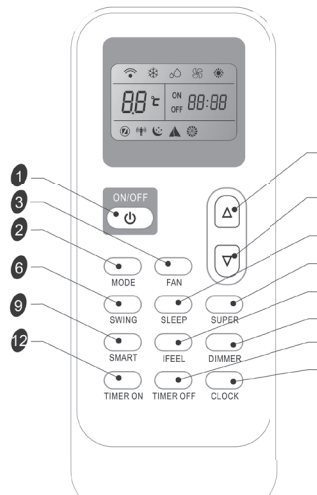
## CAUTION

- Do not use the remote if the batteries have leaked. The chemicals in batteries could cause burns or other health hazards.

### Remote control

### NOTE:

- Remote control may differ in appearance.



The remote control vary depend of model: The buttons on the remote control may have a different name or location than the remote control shows in this manual.

### Temperature

- Press the PLUS button to raise the temperature. Press the PLUS button once to increase the set temperature by 1°F (1°C).
- Press the MINUS button to lower the temperature. Press the MINUS button once to decrease the set temperature by 1°F (1°C).

### NOTE:

- In the Cooling mode, the temperature can be set between 61°F and 86°F (16°C and 30°C).
- In Fan Only mode, the temperature can not be set.
- The unit LCD show the target temperature for 5 seconds and then displays the room temperature.

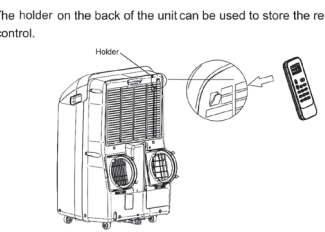
### Change display between °F and °C

To change the temperature display between °F and °C press both the Plus and Minus Adjust buttons at the same time.



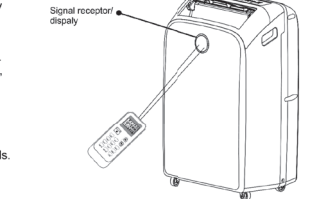
### Storage Tip

The holder on the back of the unit can be used to store the remote control.



### How to Use

To operate the room air conditioner, aim the remote control at the signal receptor. The remote control will operate the air conditioner at a distance of up to 23'(7m) when pointing at signal receptor of the air conditioner.



### Button and Function

1 ON/OFF	6 SUPPER
2 MODE	7 SMART
3 FAN	8 IFEEL
4 UP	9 DIMMER
5 DOWN	10 Timer On
6 SWING	11 TIME OFF
7 SLEEP	12 CLOCK

### NOTE:

- Your air conditioner can display either degrees Fahrenheit or Celsius. To change between the two, press the MODE and DOWN buttons at the same time. \*This function is not available on all models.

### Indication symbols

☁ Cooling indicator	⚙ Auto fan speed
☀ Dry indicator	⚙ High fan speed
☀ Fan only indicator	⚙ Medium fan speed
☀ Heating indicator	⚙ Low fan speed

▲ Smart indicator	📶 Signal transmit
🔆 Sleep indicator	ON OFF 88:88 Display set timer
🔆 IFEEL indicator	88:88 Display current time
🔆 Super indicator	88.8°C Display set temperature

## SMART Mode

Regardless if the unit is on or off, by pressing the SMART button, the operation mode and temperature will automatically be chosen by the indoor room temperature.

To cancel SMART Mode, just press the MODE button, to select Cooling, Heating, or Dry.



Operation mode and temperature are determined by indoor temperature.

### With Heater/Heat pump models

Indoor temperature	Operation mode	Target temperature
70°F (21°C) or below	HEATING	72°F (22°C)
70-73°F (21-23°C)	FAN ONLY	
73-79°F (23-26°C)	DRY	Room temperature decrease 4°F(2°C) after operating for 3 minutes
Over 79°F(26°C)	COOLING	79°F(26°C)

### Cooling only models

Indoor temperature	Operation mode	Target temperature
73°F(23°C) or below	FAN ONLY	
73-79°F(23-26°C)	DRY	Room temperature decrease 4°F(2°C) after operate for 3 minutes
Over 79°F(26°C)	COOLING	79°F(26°C)

### NOTE:

- Temperature, airflow and direction are controlled automatically in smart mode. However, a decrease or rise of up to 4°F (2°C) can be set with the remote controller if you still feel uncomfortable.

Your feeling	Button	Adjustment
Uncomfortable because of unstable air flow volume.	FAN	Indoor fan speed alternate among High and Low each time this button is pressed
Uncomfortable because of unstable flow direction.	SWING	Press it once, the lower swings to change airflow direction. Press it again, swing stops.

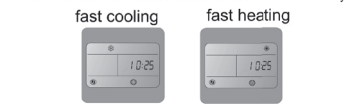
## SUPER

SUPER button is used to start or stop fast cooling or heating.

- Press SUPER button. The air conditioner automatically sets the fan speed to High and the temperature to 61°F (16°C). Fast heating operates at auto fan speed, changing the set temperature automatically to 86°F (30°C).
- To turn off Super, press any button on the remote control or control panel except Timer On, Timer Off, Clock, Dimmer, feel and Swing.

### NOTE:

- In the SUPER mode you can set the airflow direction or timer.
- SMART and SUPER modes cannot be used simultaneously.



## SLEEP Mode

SLEEP can only be set in Cooling, Heating or Dry modes. When in SLEEP mode the unit will utilize lower, quieter fan speeds and automatic temperature adjustments offering 8 hours of optimal sleeping conditions before shutting off.



### NOTE:

- Sleep mode cannot be used if the unit is in Smart mode.
- The appliance will stop operation automatically after operating for 8 hours.
- Fan speed is automatically set at low speed.
- In the Cooling mode, if the current room temperature is below 79°F (26°C), the temperature will automatically increase 1°F(1°C) during the first hour after Sleep is activated and continue running at that temperature. If the room temperature is 79°F(26°C) or above, the set temperature will not change.
- In Heating mode, the set temperature will decrease by 6°F(3°C) at most, during 3 hours and continues running at that temperature until auto shut off.

### Normal Sounds

- When your air conditioner is operating normally, you may hear sounds such as:
- Air movement from the fan.
  - Clicks from the thermostat cycling.
  - Vibration or noise due to poor wall or window construction.
  - A high-pitched hum or pulsating noise caused by the high-efficiency compressor cycling on and off.

**NOTE:** The temperature and airflow direction may be adjusted during Sleep mode. The fan speed is automatically set to Low speed. After 5 seconds, the lights on the control panel display will dim again.

**NOTE:** The air conditioner will return to previous settings after Sleep mode is turned off.

## I FEEL

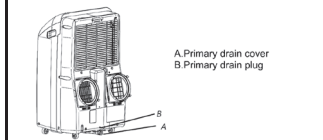
The temperature sensor built into the remote control can sense its surrounding temperature and transmit the signal back to the unit. The temperature is adjusted to provide maximum comfort.



- The default setting for IFEEL is inactive.
- Press the IFEEL button and the transmit icon will appear on the remote control's display. Press the IFEEL button again and the IFEEL function will shut off.

## PORTABLE AIR CONDITIONER CARE

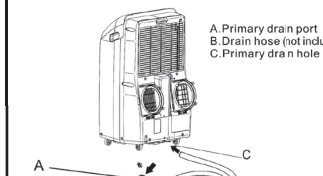
### Draining the Air Conditioner(non-Heating models)



**WARNING**  
Excessive Weight Hazard  
Use two or more people to move and install the air conditioner.  
Failure to do so can result in back or other injury.

- Unplug the air conditioner or disconnect power.
- Move the air conditioner to a drain location or outside.
- Remove the primary drain cover and plug.
- Drain water completely through the drain hole.
- Reinstall the drain plug to the primary drain hole.
- Reinstall the primary drain cover to the drain hole.
- Reposition the air conditioner.
- Plug in the air conditioner or reconnect power.

### Draining the Air Conditioner(Heating models)



**WARNING:** Please connect the drain hose on heating mode, or the unit will stop running after the water reaches warning level.

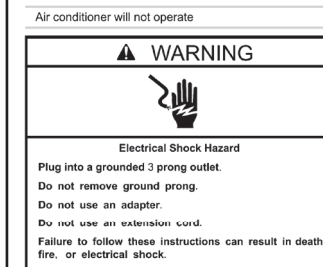
- Uncover the primary drain port.
- Attach the drain hose to the primary drain hose.
- Place the other end of drain hose into an outfall. Check to see that the hose lies flat and is in the drain. Make sure the hose end that goes to the drain is on a lower level than the hose end that connects to the unit. The hose should not be kinked or pinched.

Before using the air conditioner again:

- Make sure the filter and drain cap are in place.
- Check the power cord to make sure it is in good condition, with no cracks or damage.
- Place new batteries in the remote.
- Install the air conditioner. See "Installation Instructions".

## TROUBLESHOOTING

Before calling for service, please try the suggestions below.



- Air conditioner will not operate
- WARNING**  
Electrical Shock Hazard  
Plug into a grounded 3 prong outlet.  
Do not remove ground prong.  
Do not use an adapter.  
Do not use an extension cord.  
Failure to follow these instructions can result in death, fire, or electrical shock.
- The power supply cord is unplugged. Plug into a grounded 3 prong outlet. See "electrical Requirements."
- Time-delay fuse or circuit breaker of the wrong capacity is being used. Replace with a time-delay fuse or circuit breaker of the correct capacity. See "electrical Requirements."
- The power supply cord has tripped (Reset button has popped out). Press and release RESET (listen for click; Reset button will latch and remain in) to resume operation.
- A household fuse has blown, or a circuit breaker has tripped. Replace the fuse, or reset the circuit breaker. See "Electrical Requirements."
- The On/OFF button has not been pressed. Press ON/OFF.
- The local power has failed. Wait for power to be restored.
- Air conditioner blows fuses or trips circuit breakers
- Too many appliances are being used on the same circuit. Unplug or relocate appliances that share the same circuit.
- You are trying to restart the air conditioner too soon after turning off air conditioner. Wait at least 3 minutes after turning off air conditioner before restarting.
- Air conditioner power supply cord trips (Reset button pops out)
- Disturbances in your electrical current can trip (Reset button will pop out) the power supply cord. Press and release RESET (listen for click; Reset button will latch and remain in) to resume operation.
- Electrical overloading, overheating, cord pinching or aging can trip (Reset button will pop out) the power supply cord. After correcting the problem, press and release RESET (listen for click; Reset button will latch and remain in) to resume operation. If the power cord fails to reset, contact a service center.

### Cleaning the Outside

- Press ON/OFF to turn off the air conditioner.
- Unplug the air conditioner or disconnect power.
- Remove the air filter and clean separately. See "cleaning the Air Filter".
- Wipe the outside of the air conditioner with a soft, damp cloth.
- Plug in the air conditioner or reconnect power.
- Press ON/OFF to start the air conditioner.

### Cleaning the Air Filter



- Press ON/OFF to turn off the air conditioner.
- Open the filter panel door on the back of the air conditioner and remove.
- Remove the tapping screw from the condenser air intake filter panel door and remove.
- Use a vacuum cleaner to clean the filter. If the filter is very dirty, wash the filter in warm water with a mild detergent.
- Reinstall the filter panel door and tapping screw.
- Plug in the air conditioner or reconnect power.

### Storing After Use

If the air conditioner will not be used for an extended period of time:

- Drain the water completely. See "Draining the Air Conditioner".
  - Run the air conditioner set to Fan Only for approximately 12 hours to dry the air conditioner.
  - Unplug the air conditioner.
  - Remove the flexible exhaust hose and store with the air conditioner in a clean, dry area. See "Installation Instructions".
  - Remove the window kit and store with the air conditioner in a clean, dry area. See "Installation Instructions".
  - Remove the filter and clean. See "Cleaning the Air Filter".
  - Clean the outside of the air conditioner. See "Cleaning the Outside".
  - Reinstall the filter.
  - Remove the batteries and store the remote control with the air conditioner in a clean, dry area.
- Before using the air conditioner again:
- Make sure the filter and drain cap are in place.
  - Check the power cord to make sure it is in good condition, with no cracks or damage.
  - Place new batteries in the remote.
  - Install the air conditioner. See "Installation Instructions".

**NOTE:** A damaged power supply cord must be replaced with a new power supply cord obtained from the product manufacturer and must not be repaired.

- Air conditioner seems to run too much
- Is there a door or window open? Keep doors and windows closed.
- The current air conditioner replaced an older model. The use of more efficient components may cause the air conditioner to run longer than an older model, but the total energy consumption will be less. Newer air conditioners do not emit the "blast" of cold air you may be accustomed to from older units, but this is not an indication of lesser cooling capacity or efficiency. Refer to the efficiency rating (EER) and capacity rating (in Btu/h) marked on the air conditioner.
- The air conditioner is in a heavily occupied room, or heat-producing appliances are in the room. Use exhaust vent fans while cooking or bathing and try not to use heat-producing appliances during the hottest part of the day. Portable air conditioners are designed as supplemental cooling to local areas within a room. A higher capacity air conditioner may be required, depending on the size of the room being cooled.

- Air conditioner runs for a short time only, but returns to run cool
- Set temperature is close to room temperature. Lower set temperature. See "portable Air Conditioner Use".
- Display error code
- If the unit displays error code E5, the water container is full. Drain the water, see "Draining the air conditioner". After draining, the unit can be operated again.
- If the unit display error code E1/E2/E3/E4/E6/E7/E8 please contact a service center.
- Air conditioner runs, but does not cool
- The filter is dirty or obstructed by debris. Clean the filter.
- Air outlet is blocked. Clear air outlet.
- Set temperature is too high. Lower set temperature.

- Air conditioner cycles on and off too much
- The air conditioner is not properly sized for your room. Check the cooling capabilities of your portable air conditioner. Portable air conditioners are designed as supplemental cooling to local areas within a room.
- The filter is dirty or obstructed by debris. Clean the filter.
- There is excessive heat or moisture, open container cooking, showers etc. in the room. Use a fan to exhaust heat or moisture from the room. Try not to use heat-producing appliances during the hottest part of the day.
- The louvers are blocked. Install the air conditioner in a location where the louvers are free from curtains, blinds, furniture, etc.