

# NINJA™ "Recipe book not included"

**NEVERCLOG™ COLD PRESS JUICER**  
COJC155 | Owner's Guide



## IMPORTANT SAFETY INSTRUCTIONS

PLEASE READ ALL INSTRUCTIONS BEFORE USE • FOR HOUSEHOLD USE ONLY

	Read and review instructions for operation and use.
	Indicates the presence of a hazard that can cause personal injury, death, or substantial property damage if the warning included with this symbol is ignored.
	For indoor and household use only.
When using electrical appliances, basic safety precautions should always be followed, including the following:	

### WARNING

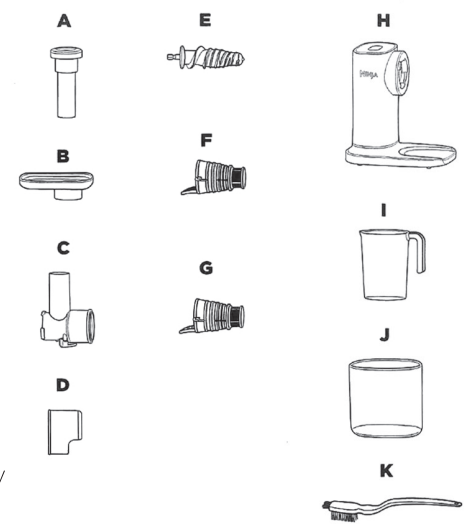
To reduce the risk of injury, fire, electrical shock, or property damage, basic safety precautions must always be followed, including the following numbered warnings and subsequent instructions. Do not use appliance for other than intended use.

- 1 Read all instructions prior to using the appliance and its accessories.
- 2 Carefully observe and follow all warnings and instructions. This unit contains electrical connections and moving parts that potentially present risk to the user.
- 3 **DO NOT** submerge the motor base or control panel in water or other liquids.
- 4 **DO NOT** spray motor base or control panel with any liquid. Take inventory of all contents to ensure you have all parts needed to properly and safely operate your appliance.
- 5 Always make sure pulp spout is securely in place before motor is turned on. **DO NOT** unfasten parts while juicer is in operation.
- 6 Be sure to turn the appliance off after each use. Make sure the motor stops completely before disassembling.
- 7 Turn the appliance **OFF**, then unplug the appliance from the outlet when not in use, before assembling or disassembling parts, and before cleaning. To unplug, grasp the plug by the body and pull from the outlet. **NEVER** unplug by grasping and pulling the flexible cord.
- 8 Before use, wash all parts that may contact food. Follow washing instructions covered in this instruction manual.
- 9 Before each use, inspect auger for damage. If auger is bent or damage is suspected, contact a service center.
- 10 **DO NOT** use this appliance outdoors. It is designed for indoor household use only.
- 11 This appliance has a polarized plug (one prong is wider than the other). To reduce the risk of electric shock, this plug will fit in a polarized outlet only one way. If the plug does not fit fully in the outlet, reverse the plug. If it still does not fit, contact a qualified electrician. **DO NOT** modify the plug in any way.
- 12 **DO NOT** operate any appliance with a damaged cord or plug, or after the appliance malfunctions, or is dropped or damaged in any manner. Contact a service center.
- 13 This appliance has important markings on the plug blade. The entire supply cord is not suitable for replacement. If damaged, please contact a service center.
- 14 Extension cords should **NOT** be used with this appliance.
- 15 To protect against the risk of electric shock, **DO NOT** submerge the appliance or allow the power cord to contact any form of liquid.
- 16 **DO NOT** allow the cord to hang over the edges of tables or counters. The cord may become snagged and pull the appliance off the work surface.
- 17 **DO NOT** allow the unit or the cord to contact hot surfaces, including stoves and other heating appliances.
- 18 **ALWAYS** use the appliance on a dry and level surface.
- 19 **DO NOT** allow children to operate this appliance or use as a toy. Close supervision is necessary when any appliance is used near children.
- 20 This appliance is **NOT** intended to be used by people with reduced physical, sensory, or mental capabilities, or lack of experience and knowledge, unless they have been given supervision or instruction concerning use of the appliance by a person responsible for their safety.
- 21 **ONLY** use attachments and accessories that are provided with the product or are recommended by SharkNinja. The use of attachments, including canning jars, not recommended or sold by SharkNinja may cause fire, electric shock, or injury.
- 22 **DO NOT** put your fingers or other objects into the juicer opening while it is in operation. If food becomes lodged in opening, use the tamper or another piece of fruit or vegetable to push it down. When this method is not possible, turn the motor off and disassemble juicer to remove the remaining food.
- 23 Keep hands, hair, and clothing out of the container when loading and operating.
- 24 During operation and handling of the appliance, avoid contact with moving parts.
- 25 **DO NOT** use the appliance if the rotating sieve is damaged.
- 26 **DO NOT** operate the appliance without the pulp container in place.
- 27 **DO NOT** microwave container or accessories provided with the appliance.
- 28 **NEVER** leave the appliance unattended while in use.
- 29 **DO NOT** juice hot liquids. Doing so may result in pressure buildup and steam exposure that can pose a risk of the user being burned.
- 30 **NEVER** operate the appliance without lids and caps in place. **DO NOT** attempt to defeat the interlock mechanism. Ensure attachments are properly installed before operation.
- 31 Before operation, ensure all utensils are removed from container. Failure to remove utensils can cause container to shatter and potentially result in personal injury and property damage.
- 32 **DO NOT** attempt to remove the feed chute chamber from the motor base while the auger is still spinning. Allow the appliance to come to a complete stop before removing attachments.
- 33 If the appliance is overloaded, the unit will temporarily disable the motor. Wait approximately 2 minutes before using again.
- 34 **DO NOT** juice hot ingredients.
- 35 Remove the seeds and pits from fruits such as mangoes or plums, as well as peels and tough skins from fruits such as oranges, lemons, and limes, as they could damage the unit.
- 36 **DO NOT** add water to the feed chute while the unit is operating to clean the unit.
- 37 **DO NOT** submerge the motor base or control panel in water or other liquids.
- 38 **DO NOT** spray motor base or control panel with any liquid.
- 39 **DO NOT** attempt to sharpen auger.
- 40 Turn off the appliance and unplug the motor base before cleaning.
- 41 **DO NOT** add frozen fruit, frozen vegetables, or ice to the juicer.
- 42 Consumers with sensitivity to pulp may wish to strain their juice as a precaution.

**SAVE THESE INSTRUCTIONS**

## PARTS

- A Tamper
- B Food Tray
- C Feed Chute Chamber with Anti-Drip Lever
- D Pulp Spout
- E Auger
- F Black Filter (less pulp)
- G Orange Filter (lots of pulp)
- H Motor Base (power cord not shown)
- I Juice Jug
- J Pulp Container
- K Cleaning Brush



Accessory type and quantity may vary depending on the model.

## BEFORE FIRST USE

**IMPORTANT:** Review all warnings at the beginning of this Owner's Guide before proceeding.

**NOTE:** All attachments are BPA free and dishwasher safe.

- 1 Remove all packaging materials from the unit.
- 2 Wash parts in warm, soapy water, then thoroughly rinse and air-dry all parts.
- 3 Wipe control panel with a soft cloth. Allow it to dry completely before using.

## FEATURES

### USING THE CONTROL PANEL



#### START/STOP

Press once to start continuous running up to 12 minutes; press again to stop.

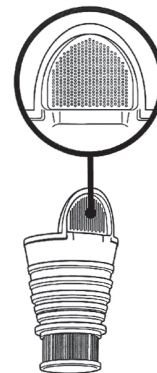


#### REVERSE

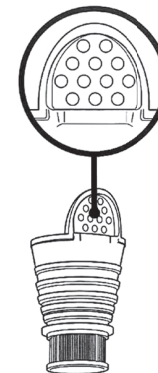
If the feed chute chamber becomes blocked or ingredients are not processing, press and hold **REVERSE**. There will be a beep and a brief pause, then the auger will rotate in the opposite direction. Release **REVERSE** to stop. Repeat as needed. Press **START/STOP** to resume normal operation.

### USING THE FILTERS FOR PULP CONTROL

Control the amount of pulp by choosing the appropriate filter.



**LESS PULP**  
Use the Black filter with the finest mesh for juice with less pulp.



**LOTS OF PULP**  
Use the Orange filter with the largest mesh for juice with lots of pulp.

**NOTE:** For best results, we recommend using the **Orange (Lots of Pulp) filter** when processing soft fibrous fruits like pears, berries, seeded melons, and pineapple.



## USING THE JUICER

### IMPORTANT:

- Review all warnings before proceeding.
- **DO NOT** add frozen fruits and vegetables or ice to the unit.

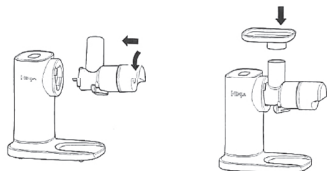
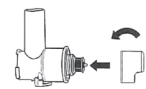
**NOTE:** If the feed chute chamber becomes blocked or ingredients are not processing, press and hold **REVERSE**. There will be a beep and a brief pause, then the auger will rotate in the opposite direction. Release **REVERSE** to stop. Repeat as needed. Press **START/STOP** to resume normal operation.

1 Plug in motor base and place on a clean, dry, level surface such as a countertop or table.

2 Insert the auger into the feed chute chamber, then attach the desired filter onto the auger, with the metal portion of the filter on the bottom of the auger. The filter will sit loosely around the auger.



3 Attach the pulp spout to the feed chute chamber by installing at an angle on top of the filter, then turning counterclockwise to lock in place.



4 Install the assembled feed chute chamber on the motor base at an angle, then turn counterclockwise until it clicks into place.

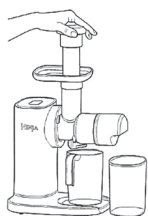
5 Install the food tray on the top of the feed chute chamber.

6 Place the pulp container under the pulp spout, then place the juice jug under the anti-drip lever on the feed chute chamber.



7 Select **START/STOP**, then gradually add ingredients to the feed chute. For best results, allow juicer to process each ingredient before adding more. Use the tamper to push ingredients down through the feed chute, as needed.

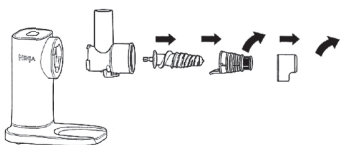
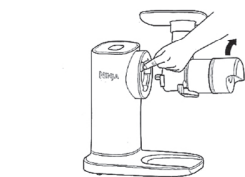
8 When juicing is complete, select **START/STOP**, then close the anti-drip lever. Stir juice and serve.



9 To disassemble, press and hold the **RELEASE** button while turning the feed chute chamber clockwise and removing it from motor base.

10 Remove the pulp spout from the feed chute chamber by turning clockwise. Remove the filter and auger by gently pulling them out of the feed chute chamber.

11 Unplug the unit when finished. If moving the unit, grab from the bottom of the base. Refer to the Care & Maintenance section for cleaning and storage instructions.



The images shown here are for illustrative purposes only and may be subject to change.

## CARE & MAINTENANCE

**IMPORTANT: DO NOT** attempt to clean the unit by adding water to the feed chute chamber while attached to the motor base.

### CLEANING

#### Hand-Washing

Separate all parts and wash in warm, soapy water with a soft cloth. Thoroughly rinse and air-dry all parts.

#### Dishwasher

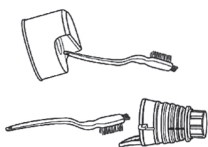
All parts, except the motor base, are top-rack dishwasher safe and should **NOT** be cleaned with a heated dry cycle.

#### Motor Base

Unplug the motor base before cleaning. Wipe with a clean, damp cloth.

#### Filters

If there is pulp buildup on the metal portion of the filter, use the included cleaning brush or a toothpick to remove the excess before washing.



#### Using the Cleaning Brush

Use the included cleaning brush to clean hard-to-reach places, as well as remove excess residue. Use the end of the cleaning brush to clear any buildup left over after juicing.

Use the bristle side of the cleaning brush to clean the filter, if needed.

### STORING

For cord storage, wrap cord with hook-and-loop fastener near the back of the motor base.

**DO NOT** wrap the cord around the bottom of the base for storage.

When moving the unit, lift from the bottom of the motor base. Store the auger and filter assembled in the feed chute chamber with the pulp spout installed. Place the juice jug into the pulp container for easy storage.

### OVERLOADING THE UNIT

This unit features a unique safety system that prevents damage to the motor and drive system should you inadvertently overload the motor. If the unit is overloaded, the motor will be temporarily disabled. Should this occur, wait 2 minutes, then press **START/STOP** to start the unit.

If your unit needs servicing, contact a service center.

## TROUBLESHOOTING GUIDE

**⚠WARNING:** To reduce the risk of shock and unintended operation, turn power off and unplug unit before troubleshooting.

#### The REVERSE program is not operating.

- After pressing and holding **REVERSE**, there will be a beep and a brief pause, then the auger will rotate in the opposite direction. Release **REVERSE** to stop. Repeat as needed. Press **START/STOP** to resume normal operation.

#### The unit stopped working and is beeping.

- The unit was overloaded with ingredients. Wait 2 minutes then press **START/STOP** to start the unit.

#### Can I juice fruit with seeds and pits in it?

- No. Seeds and pits should be removed from the fruit prior to juicing. For example, remove the seeds from cherries and the pit from a plum.

#### Can I juice frozen fruits and vegetables or add ice?

- No, do not use frozen fruit, frozen vegetables, or ice with this unit.

#### The unit makes a squeaking noise when I juice certain ingredients.

- When the auger is breaking down fibrous ingredients like apples, celery, herbs, and leafy greens, the unit will sometimes make this noise. This is normal and not a cause for concern.

#### The unit is producing less juice than I anticipated based on the amount of produce I used.

- With the Ninja NeverClog™ Cold Press Juicer, you can expect 1 lb. of produce to yield approximately 8 oz. of juice.
- Depending on the seasonality of ingredients, you may experience lower juice and pulp yield when using the Less Pulp Filter. If this occurs, try using the Lots of Pulp Filter.

## REFURBISHED PRODUCT LIMITED NINETY DAYS WARRANTY

The **Refurbished Product Service Center** offers the following WARRANTY to the ORIGINAL purchaser of a product which we have refurbished.

This product that has been refurbished is warranted against any electronic or mechanical defects for a period of NINETY DAYS from the date of the original purchase by the consumer. Since this unit was sold as a refurbished item, the warranty does not apply to any cosmetic appearance items such as scratches. Should a defect occur, the **Refurbished Product Service Center** will repair or, at its option, replace defective unit/parts with new or rebuilt materials without charge for either parts or labor. Replacement unit/parts will be warranted for the remaining portion of the original warranty period.

This warranty does not cover installation or damage from accident, misuse, abuse, improper wiring, incorrect voltage, operating the unit against the instructions in the owner's manual or any product which has been opened, altered, or tampered with.

This warranty does not cover costs for removal and or installation of the unit for repair. Under no circumstances shall the service center be liable for any special, incidental or consequential damages or for any other expenses incurred by reason of use or sale of this product. This warranty is in lieu of any other warranties expressed or implied warranty of merchantability of fitness for particular use or otherwise.

This warranty gives the consumer specific legal rights and they may also have other rights which vary from State to State. Some States do not follow the exclusion or limitation of incidental or consequential damages, hence the above exclusion and limitations may not apply.

**Refurbished Product Service Center**

**13225 Marquardt Avenue Santa Fe Springs, CA 90670.**

## WARRANTY REPAIR INFORMATION

If you need service on your unit and this product requires repair during the 90 days warranty period; please go to [www.ConsumerServiceRefurbish.com](http://www.ConsumerServiceRefurbish.com) or call the **Refurbished Product Service Center** at 562-946-3531 to obtain the required return authorization (RA) number. Pack the unit properly (the original carton is ideal for this purpose) along with a copy of your purchase receipt and a letter describing the problem. Send the unit freight prepaid and insured to:

**Refurbished Product Service Center,**

**Att: Customer Service Department 13225 Marquardt Avenue Santa Fe Springs, CA 90670**

Your unit will be promptly repaired and returned to you.

We will refuse to accept delivery of the returned unit unless the assigned RA number appears on the outside of the shipping carton.

### Owner's Information

(Keep for your permanent records)

NAME: \_\_\_\_\_

ADDRESS: \_\_\_\_\_

CITY: \_\_\_\_\_ STATE: \_\_\_\_\_ ZIP CODE: \_\_\_\_\_

PHONE: \_\_\_\_\_ E-MAIL: \_\_\_\_\_

MODEL: \_\_\_\_\_ SERIAL NO.: \_\_\_\_\_

### TECHNICAL SPECIFICATIONS

Voltage: 120V~, 60Hz

Power: 150 Watts

### SharkNinja Operating LLC

Illustrations may differ from actual product. We are constantly striving to improve our products, therefore the specifications contained herein are subject to change without notice.

NINJA is a registered trademark of SharkNinja Operating LLC.

NEVERCLOG and NINJA NEVERCLOG are trademarks of SharkNinja Operating LLC.

This product may be covered by one or more U.S. patents.

See [sharkninja.com/patents](http://sharkninja.com/patents) for more information.

© 2023 SharkNinja Operating LLC

**NOTE:** In order to ensure the highest possible standard for refurbished items, all units are thoroughly inspected as part of the process.

For this item, water may be used during the refurbishing process and so; you may notice some condensation in the water reservoir. It is recommended to rinse the water reservoir with fresh water prior to its first use.

PRINTED IN MEXICO

SC: 02-09-2024 Elbrd:J.M

SHNDML:COJ155\_B

OBN:COJC155\_IB\_MB\_Mv2\_230414

814100193

