



# OWNER'S MANUAL AIR CONDITIONER

Read this owner's manual thoroughly before operating the appliance and retain it for future reference.

804106427

## SAFETY INSTRUCTIONS

### READ ALL INSTRUCTIONS BEFORE USE

Your safety and the safety of others are very important.

We have provided many important safety messages in this manual and on your appliance. Always read and follow all safety messages.

- Warning Symbol:** This is the safety alert symbol. This symbol alerts you to potential hazards that can kill or injure you and others. All safety messages will follow the safety alert symbol and either the word WARNING or CAUTION.

- WARNING:** If you do not follow instructions, it could result in death or serious injury.

- CAUTION:** If you do not follow instructions, it could result in minor or moderate injury or damage to the product.

All safety messages will tell you what the potential hazard is, tell you how to reduce the chance of injury, and tell you what may happen if the instructions are not followed.

### IMPORTANT SAFETY INSTRUCTIONS

#### WARNING

To reduce the risk of explosion, fire, death, electric shock, injury or scalding to persons when using this product, follow basic precautions, including the following:

- Installation:**
  - Before use, the appliance must be properly installed as described in this manual.
  - Connect to a properly rated, protected, and sized power circuit to avoid electrical overload.
  - Always plug into a grounded outlet.
  - Do not, under any circumstances, cut or remove the third (ground) prong from the power cord.
  - When installing or moving the appliance, be careful not to pinch, crush, or damage the power cord.
  - Do not modify or extend the power cord.
  - Do not disassemble or modify the product.
  - Adhere to all industry recommended safety procedures including the use of long-sleeved gloves and safety glasses.
  - Use care when unpacking and installing. The edges of the product may be sharp.
  - Disconnect the power cord or circuit breaker before installing or servicing the appliance.
  - Keep packaging materials out of the reach of children. These materials can pose a suffocation risk to children.
  - Store and install the product where it will not be exposed to temperatures below freezing or exposed to outdoor weather conditions.
  - Do not store or use gasoline or other flammable vapors and liquids in the vicinity of this or any other appliance.

### Operation

- Use this appliance only for its intended purpose.
- Never attempt to operate the appliance if it is damaged, malfunctioning, partially disassembled, or has missing or broken parts, including a damaged cord or plug.
- Repair or immediately replace all power cords that have become frayed or otherwise damaged. Do not use a cord that shows cracks or abrasion damage along its length or at either end.
- Do not run cord under carpets or mats where it could be stepped on and damaged.
- Keep the cord out from under heavy objects like tables or chairs.
- Do not place the power cord near a heat source.
- Do not use an adaptor or plug the product into a shared outlet.
- If you detect a strange sound, a chemical or burning smell, or smoke coming from the appliance, unplug it immediately, and contact a service center.
- Never unplug the appliance by pulling on the power cord. Always grip the plug firmly and pull straight out from the outlet.
- Do not grasp the power cord or touch the appliance controls with wet hands.
- If water enters the product, turn off the power at the main circuit, then unplug the product and call for service.
- If the product has been submerged, contact a service center.
- Unplug the product when unused for long periods.
- Unplug the product before cleaning.
- In the event of a gas leak (propane gas, etc.) do not operate this or any other appliance. Open a window or door to ventilate the area immediately.
- This appliance is not intended for use by persons (including children) with reduced physical, sensory or mental capabilities, or lack of experience and knowledge, unless they have been given supervision or instruction concerning the use of the appliance by a person responsible for their safety.
- Do not tamper with controls.
- The interior of the product must only be cleaned by an authorized service center or a dealer.
- Do not use solvent-based detergent on the product. Doing so can cause corrosion or damage, product failure, electrical shock, or fire.

**California Safe Drinking Water and Toxic Enforcement Act**  
This product contains chemicals known to the State of California to cause cancer and birth defects or other reproductive harm. **Wash hands after handling.**

#### CAUTION

To reduce the risk of minor injury to persons, malfunction, or damage to the product or property when using this product, follow basic precautions, including the following:

### Operation

- This appliance is not intended for use as a precision refrigeration system. Do not use it for special purposes such as maintaining pets, food, precision machinery, or art objects.
- Make sure the air inlet and outlet are free from obstructions.
- Use a soft cloth to clean the appliance. Do not use waxes, thinners, or harsh detergents.
- Do not step on or place heavy objects on top of the appliance.
- Do not operate the appliance without the filter securely installed.
- Clean the filter every two weeks.
- Do not drink water drained from the appliance.
- If the batteries leak onto your clothes or skin, remove contaminated clothing and rinse skin thoroughly with soap and water. Do not use the remote if the battery has leaked.
- If the battery or the liquid inside it are ingested, do not induce vomiting or give food or drink. Contact a physician immediately.

### ELECTRICAL SAFETY

#### WARNING

**Electric Shock Hazard**  
Failure to follow these instructions can result in death, fire, or electrical shock.

- This unit must be properly grounded.
- Do not, under any circumstances, cut or remove the ground prong.
- If you do not have a properly grounded outlet, or if there is any doubt that the outlet is properly grounded, a qualified electrician should check the outlet and circuit, and, if necessary, install a properly grounded outlet.

- This air conditioner must be plugged into a grounded 60 Hz, 120 VAC outlet protected by a 15 amp time delay fuse or circuit breaker.
- This air conditioner must be installed in accordance with national wiring codes.
- Do not alter or modify the plug or cord of this air conditioner. If the power cord becomes worn or damaged, the cord should only be replaced by a qualified service technician using genuine replacement parts.
- Do not use an extension cord.
- Do not use an adapter with this appliance.

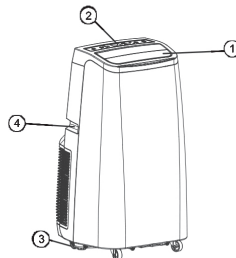
### SAVE THESE INSTRUCTIONS

## PARTS AND FEATURES

### KEY PARTS AND COMPONENTS

#### 1 AIR DISCHARGE

The adjustable louvered air discharge opens automatically when the air conditioner is turned on, and closes when it is turned off. It can also be set to oscillate to distribute air more evenly through the room.



#### 2 CONTROL PANEL AND DISPLAY

Easy-to-read digital display shows the set temperature, and indicator lights show the operating mode. Simple push buttons make changing settings quick and easy.

#### 3 SWIVELING CASTERS

Swiveling casters allow you to move the air conditioner easily on most floor surfaces.

#### 4 INTEGRATED HANDLES

Integrated handles provide a convenient grip when lifting the air conditioner.

#### 5 INFRARED REMOTE CONTROLLER

The remote controller allows you to adjust the temperature and operate most functions of the air conditioner from across the room.

#### 6 BOTTOM DRAIN PORT

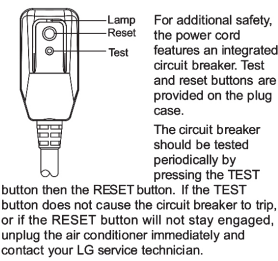
Before moving the air conditioner, drain the internal water in the collection tank completely using the bottom drain port.

#### 7 AIR FILTER

#### 8 HOSE AND DIFFUSER

Use the diffuser and hose to connect the air conditioner to the window installation kit to vent exhaust air outside.

#### INTEGRATED CIRCUIT BREAKER



For additional safety, the power cord features an integrated circuit breaker. Test and reset buttons are provided on the plug case.

The circuit breaker should be tested periodically by pressing the TEST button then the RESET button. If the TEST button does not cause the circuit breaker to trip, or if the RESET button will not stay engaged, unplug the air conditioner immediately and contact your LG service technician.

## HOW TO USE

### BEFORE USING THE AIR CONDITIONER

#### PREPARING FOR OPERATION

Refer to the Installation Instructions included in this manual before using the air conditioner. Once the air conditioner has been properly assembled and installed:

- Plug the power cord into its own dedicated properly grounded outlet. Do not plug other appliances into the same outlet. Doing so could overload the outlet and create a fire hazard.
- Make sure the air conditioner and cord are positioned where they do not create a tripping hazard and will receive adequate ventilation. Do not place the appliance near furniture or objects that could block the vent openings.
- Make sure that any items that could be blown over or damaged by the airflow from the fan are out of the airflow path.

- When used at the same time as stoves, fireplaces, and other combustion devices, make sure there is a sufficient flow of fresh air into the room. Do not use in tightly enclosed spaces with these types of devices.
- This air conditioner is intended for household use as a consumer comfort appliance. Do not use it as a precision climate control system, or for purposes such as cooling precision equipment, food, pets, plants, artwork, etc. Such items could be damaged.
- Do not bend the hose downward when window installation kit is not applied. It may cause failure of air conditioner or performance deterioration.

#### UNPACKING THE AIR CONDITIONER

Remove and store packing materials for reuse. Remove any shipping tape before using the air conditioner. If the tape leaves behind any adhesive, rub a small amount of liquid dish soap onto it and wipe with a damp cloth. Do NOT use sharp instruments, alcohol, thinners, or abrasive cleaners to remove adhesive. They could damage the finish.

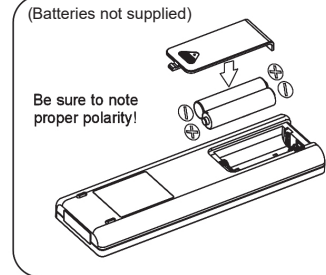
#### IMPORTANT:

- Do not remain in the direct airflow from the air conditioner for extended periods of time.

#### INSERTING BATTERIES IN THE REMOTE

Before using the remote, install the not provided batteries.

- Press and slide to remove the battery cover on the back of the remote.
- Insert two new alkaline AAA batteries into the battery compartment, being sure to note the proper polarity.
- Reattach the battery cover.



#### NOTE:

- Use only alkaline batteries. Do not use rechargeable batteries.
- When replacing batteries, always replace both batteries with new batteries. Do not mix old and new batteries. Do not mix alkaline, standard (carbon-zinc), or rechargeable (ni-cad, ni-mh, etc) batteries.
- If the air conditioner will not be used for an extended period of time, remove the batteries from the remote.

#### REMOTE STORAGE

The air conditioner is designed with a convenient storage compartment for the remote.

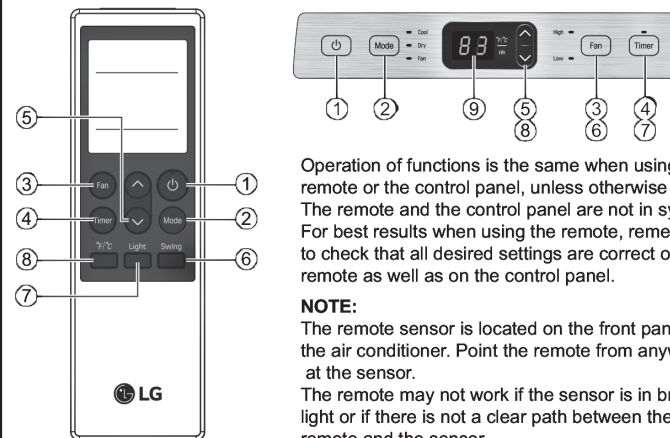
#### NOTE:

When not in use, store the remote in the storage compartment with the buttons facing out.

#### WARNING

- If the batteries leak onto your clothes or skin, remove contaminated clothing and rinse skin thoroughly with soap and water. Do not use the remote if the battery has leaked.
- If the battery or the liquid inside it are ingested, do not induce vomiting or give food or drink. Contact a physician immediately.

### CONTROL PANEL AND REMOTE



Operation of functions is the same when using the remote or the control panel, unless otherwise stated. The remote and the control panel are not in sync. For best results when using the remote, remember to check that all desired settings are correct on the remote as well as on the control panel.

#### NOTE:

The remote sensor is located on the front panel of the air conditioner. Point the remote from anywhere at the sensor. The remote may not work if the sensor is in bright light or if there is not a clear path between the remote and the sensor. Some functions may not be supported, depending on the model.

The image shown here is for illustrative purposes only and may be subject to change. The actual descriptions of control panel and their locations may vary depending on the model.

The remote control vary depend of model: The buttons on remote control may have a different name or location than the remote control shows in this manual.

#### 1 POWER

Turns the air conditioner on and off. A chime sounds to confirm you have turned it on or off.

#### 2 MODE

Press this button repeatedly to toggle through and select the operating mode. Modes include Cool, Dry (dehumidify), and Fan. An LED illuminates to indicate the selected mode. The default mode is Cool. See the Operation section for more information.

#### 3 FAN

Press repeatedly to toggle the fan speed between High and Low settings. An LED illuminates to indicate the selected fan speed. The fan speed can be changed in the Cool, and Fan modes. The fan speed is preset in the Dry mode. After pressing the button, there is a brief delay before the fan motor changes speed.

#### 4 TIMER

Use the timer function to set the air conditioner to turn on or off at a desired time. See the Operation section for more information.

#### 5 ▲ / ▼ (TEMP/TIMER)

In COOL mode, the ▲/▼ buttons adjust the set temperature up to 86°F or down to 60°F, in one-degree increments. When the TIMER function is selected, use the ▲/▼ buttons to adjust the delay time from 0 to 24 hours, in one-hour increments.

NOTE: In COOL mode, the thermostat in the air conditioner runs the compressor until the set temperature is reached, then cycles the compressor on and off to maintain the set temperature.

#### 6 SWING

Sets the air discharge louvers to open and shut, circulating the air more effectively through the room. If the louvers do not move properly, unplug and plug in the power cord.

NOTE: Press and hold the Fan button on the control panel for 3 seconds to set Swing.

#### 7 LIGHT

Turn on/off the Display screen.

NOTE: Press and hold the Timer button on the control panel for 3 seconds to set Light.

#### 8 °C/°F

Remotely change units between °C and °F

NOTE: To change units from the control panel, press and hold the ▲ and ▼ buttons at the same time.

#### 9 LED DISPLAY

LED display shows the set temperature, fan speed, or the selected TIMER delay. LEDs illuminate to indicate the active Mode, fan speed, and other settings. An FL error code displays when the water drain tank needs to be emptied.

### OPERATION

#### MODES

##### COOL

Compressor runs and cools the room. Use the ▲/▼ and FAN buttons to set the desired temperature and fan speed. The desired temperature can be set from 60°F to 86°F (16°C to 30°C) in one-degree increments.

##### FAN

Fan circulates air but compressor does not run. Use the FAN button to set the desired fan speed to either High or Low.

##### DRY

Use the Dry mode to remove humidity from the room without additional cooling. This mode adjusts the room temperature and the fan speed automatically to maintain the optimal level of humidity.

#### RESTARTING THE AIR CONDITIONER AUTOMATICALLY

When the air conditioner is turned on again after a power failure, this function restores the previous Settings.

#### TIMER

Use the Timer function to turn the air conditioner ON/OFF automatically.

#### Setting the Air Conditioner to Turn ON

- Plug in the air conditioner and power it ON.
- Set the desired mode, temperature, fan speed, etc.
- Power OFF the air conditioner.
- Press Timer and use the ▲/▼ buttons to set the desired delay time until the air conditioner turns ON. The delay time can be set from 0 to 24 hours in one-hour increments.
- The Timer LED on the air conditioner illuminates, and the delay time appears on the remote and in the control panel.
- To cancel the Timer function, press Timer twice.

#### Setting the Air Conditioner to Turn OFF

- Plug in the air conditioner and power it ON.
  - Set the desired mode, temperature, fan speed, etc.
  - Press Timer and use the ▲/▼ buttons to set the desired delay time until the air conditioner turns OFF. The delay time can be set from 0 to 24 hours in one-hour increments.
  - The Timer LED on the air conditioner illuminates, and the delay time appears on the remote. The delay time appears briefly in the control panel and is then replaced by the set temperature.
  - To cancel the Timer function, press Timer twice.
- NOTE: To check the remaining time, press Timer.

Accessory type and quantity may vary depending on the model.

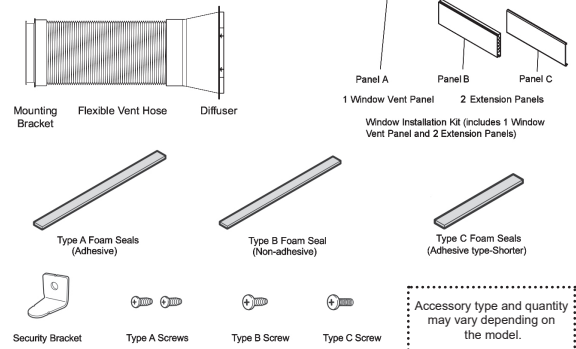
# INSTALLATION INSTRUCTIONS

## PREPARING FOR INSTALLATION

**WARNING** The air conditioner is heavy! Use two or more people to lift and install the unit! Failure to do so could result in back injury or other injuries.

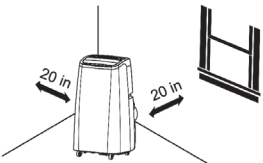
### EXHAUST COMPONENTS

The following components are used for window venting. Not all components are used for every installation.



## SELECTION OF INSTALLATION LOCATION

- Place the unit on a level floor.
- For best performance, allow at least 20 in of air space on all sides of the unit for good air circulation.
- Place the unit near a window. The hose and diffuser will be used to connect the air conditioner to the window installation kit to vent exhaust air outside.



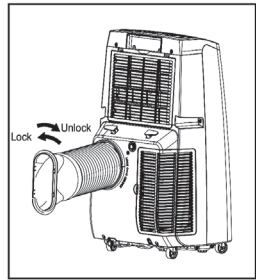
### WARNING

The length of the exhaust hose is specially designed according to the specification of this product. Do not replace or extend it with your own private hose as this could cause malfunction.

## ATTACHING THE HOSE AND DIFFUSER

Assembling the Mounting Bracket, Diffuser, and Vent Hose

- Use a pair of pliers to extend the first four or five accordioned folds at both ends of the vent hose.
- To attach the mounting bracket to one end of the vent hose, insert the extended folds on one side of the vent hose between the ridges inside one side of the mounting bracket.
- Use a pair of pliers to pull the folds on the opposite side of the vent hose up and between the ridges inside the opposite side of the mounting bracket.
- Tug the mounting bracket to make sure it is securely attached to the vent hose.
- To attach the diffuser to the other end of the vent hose, use a Phillips screwdriver to remove the four screws holding the grill on the end of the diffuser. Set the grill and screws aside.
- Insert the vent hose in the round end of the diffuser in the same manner as assembling the hose to the mounting bracket. (See steps 2 and 3.)
- Tug the diffuser to make sure it is securely attached to the vent hose.
- Reattach the grill on the diffuser, using the four screws removed in step 5.



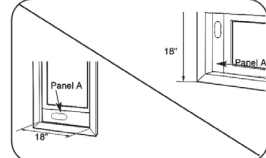
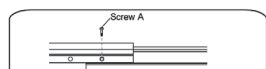
Attach the hose assembly onto the back of the air conditioner by inserting the edges of the mounting bracket behind the tabs at the top and bottom and sliding the mounting bracket to the left until it snaps into place.

## WINDOW VENT PANEL AND EXTENSIONS

The window installation kit allows you to install the air conditioner in most vertical-sliding windows 18" to 50" wide, or horizontal-sliding windows from 18" to 50" high.

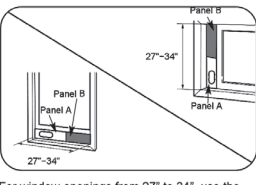
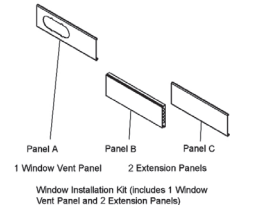
Window opening	Panel A	Panel B	Panel C	Fig.
18"	✓	✓	✓	a
27" - 34"	✓	✓	✓	b
35" - 50"	✓	✓	✓	c

- Select the panels required based on the window opening, as shown above.
- If the installation requires 2 or 3 panels, assemble the panels to the proper length and fix them in place with 1 type A screw.



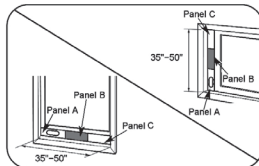
For an 18" window opening, use the window vent panel by itself.

Fig. a



For window openings from 27" to 34", use the window vent panel (Panel A) and an extension panel (Panel B).

Fig. b

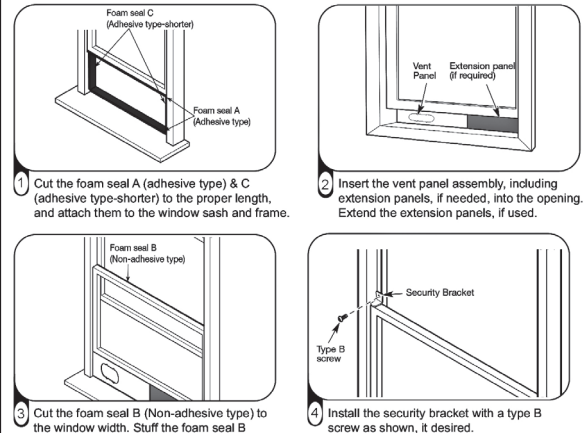


For window openings from 35" to 50", use the window vent panel and two extension panels (Panel B and Panel C).

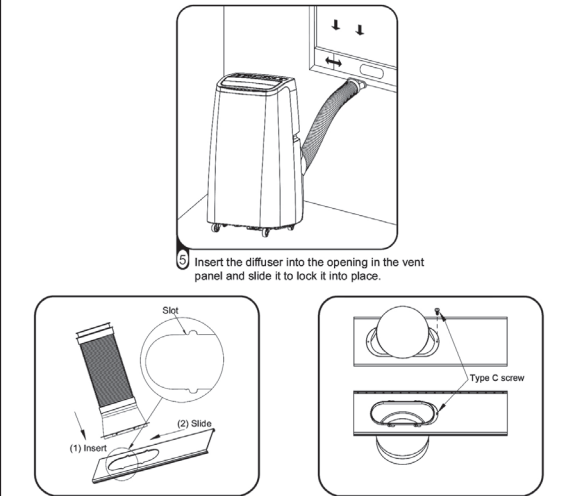
Fig. c

## INSTALLATION IN VERTICAL-SLIDING WINDOWS

NOTE: The window installation kit can be used with vertical-sliding windows between 18" and 50" wide.



## INSTALLATION IN VERTICAL-SLIDING WINDOWS

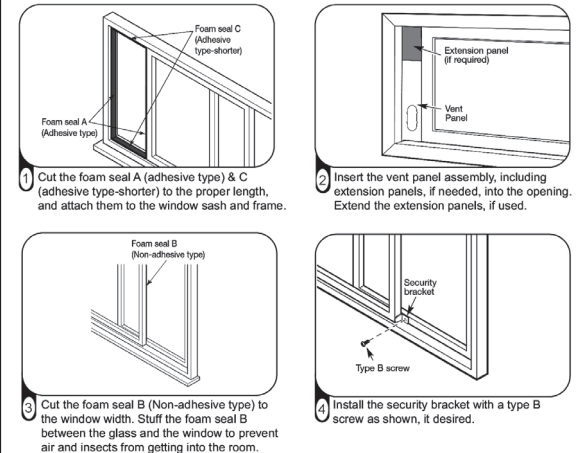


Align the tabs on the diffuser with the slots in the vent panel. Insert the diffuser into the opening in the vent panel and slide the diffuser to lock the tabs in place.

Insert the type C screw in the hole in the diffuser to prevent the diffuser from sliding out of the vent opening.

## INSTALLATION IN HORIZONTAL-SLIDING WINDOWS

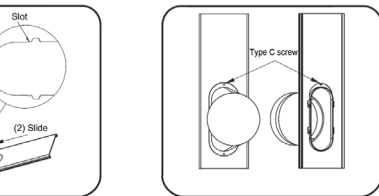
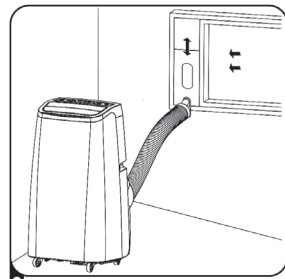
NOTE: The window installation kit can be used with horizontal-sliding windows between 18" and 50" tall.



Cut the foam seal B (Non-adhesive type) to the window width. Stuff the foam seal B between the glass and the window to prevent air and insects from getting into the room.

Install the security bracket with a type B screw as shown, if desired.

## INSTALLATION IN HORIZONTAL-SLIDING WINDOWS



Align the tabs on the diffuser with the slots in the vent panel. Insert the diffuser into the opening in the vent panel and slide the diffuser to lock the tabs in place.

Insert the type C screw in the hole in the diffuser to prevent the diffuser from sliding out of the vent opening.

## CARE AND CLEANING

Your air conditioner is designed for year-round operation with only minimal cleaning and maintenance.

For maximum efficiency, it is recommended that you have the cooling coils inspected and cleaned annually. Contact a Service Center.

### WARNING

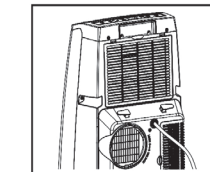
- Unplug the air conditioner before cleaning or performing any maintenance or servicing.
  - Be careful when cleaning coils or removing or reinstalling the filter—the cooling fins are sharp!
- Failure to follow the above precautions could result in electric shock or personal injury.

## EMPTYING THE WATER COLLECTION TANK

This product has a self-evaporative system. The condensing water will be recycled to cool the condenser. This not only improves cooling efficiency, but also saves energy for you.

### Using the Upper Drain Port (Dry Mode Only)

- This can be used when you need dehumidification in high humidity.
- The upper drain port is not used in the Cool or Fan mode.
- Remove the drain plug when using the Dry (dehumidifying) mode.
- Install a drain hose (1/2" outer diameter) and place the open end of the hose over a drain or bucket or out the window.



### Using the Lower Drain Port

When the internal water collection tank is full, the LED display will show FL and the air conditioner will turn off until the tank is emptied.

- Unplug the air conditioner, disconnect the exhaust hose from the back, and move the air conditioner to a suitable drain location or outdoors. You may also place a pan under the drain that will hold up to 2 pints of water.
- Remove the drain cap from the drain outlet.
- Once the water collection tank is drained, reinstall the drain cap, making sure it is on securely.
- Place the air conditioner in the desired location, reconnect the exhaust hose, and plug in the air conditioner.

### NOTICE: If the FL error appears in the display:

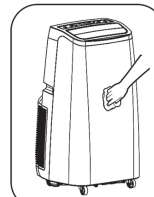
The water collection tank is full. Unplug the air conditioner, drain the tank, then plug the air conditioner back in and restart it.

NOTE: After the air conditioner is unplugged, it defaults to the Cool mode with a temperature setting of 72°F (22°C) once restarted.

## CLEANING THE CASE

Wipe the case with a slightly damp cloth, then wipe dry with a dry cloth or towel.

- To prevent damage to the finish, do not use gasoline, benzene, thinner, etc., or any abrasive cleansers to clean the air conditioner; they may damage the finish.
- Never pour water onto or into the air conditioner. It could damage internal components and create a shock and fire hazard.

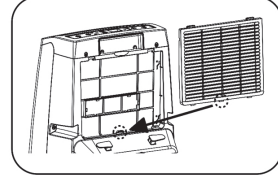
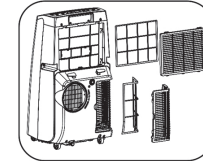


## CLEANING THE AIR FILTER

The air filters should be cleaned every two weeks; depending on indoor air quality, more frequent cleaning may be needed. A dirty air filter will decrease airflow and reduce efficiency.

Do not operate the air conditioner without the air filters in place.

- Pull out each air filter by the handle.
- Use a vacuum cleaner to clean the filters. If the filters are heavily soiled, they can be washed in warm water using a mild detergent. Do not use harsh cleaners or very hot water. Do not wash in a dishwasher.
- Allow the filters to dry completely before reinstalling.
- Reinsert the filters.



## CARE AND CLEANING

### STORING THE AIR CONDITIONER

If the air conditioner will not be used for an extended period of time:

- To drain the water collection tank completely, leave the bottom drain cap off long enough to allow any residual water to drain out. Once the tank is completely drained and no more water flows out, reinstall the cap.
- Remove and clean the filters, allow them to dry completely, then reinstall them.
- Remove the batteries from the remote.
- Store the air conditioner in a cool, dry location, away from direct sunlight, extreme temperatures, and excessive dust.

Before using the air conditioner again:

- Make sure the filters and drain cap are in place.
- Check the power cord to make sure it is in good condition, with no cracks or damage.
- Place new batteries in the remote.
- Install the air conditioner as described in the Installation Instructions.

## TROUBLESHOOTING

### BEFORE CALLING FOR SERVICE

Before you call for service, review this list. It may save you time and expense. This list includes common occurrences that are not the result of a defect in workmanship or materials.

Problem	Possible causes	Corrective Action
Air Conditioner does not start.	The air conditioner is unplugged.	Make sure the air conditioner plug is pushed completely into the outlet.
	The fuse is blown/circuit breaker is tripped.	Check the house fuse/circuit breaker box and replace the fuse or reset the breaker.
	Power failure.	If power failure occurs, unplug the unit. When power is restored, wait 3 minutes to restart the air conditioner to prevent tripping of the compressor overload.
	The current interrupter device is tripped.	Press the RESET button located on the power cord plug. If the RESET button will not stay engaged, discontinue use of the air conditioner and contact a qualified service technician.
	FL appears in the display.	The water collection tank is full. Drain the tank and reset your settings.
Air Conditioner does not cool as it should.	Room temperature is less than the set temperature.	This is normal. The air conditioner automatically shuts off when the room temperature equals or is less than the set temperature. Set the desired temperature to a level lower than the current temperature.
	Airflow is restricted.	Make sure there are no curtains, blinds, or furniture blocking the front of the air conditioner.
	The temp control may not be set correctly.	Set the desired temperature to a level lower than the current temperature.
Air Conditioner runs too often or too long.	The air filters are dirty.	Clean the filters at least every 2 weeks. See the Care and Cleaning section.
	The room may have been hot.	When the air conditioner is first turned on, you need to allow time for the room to cool down.
Air Conditioner freezing up.	The cooling coils are iced over.	Ice may block the air flow and obstruct the air conditioner from properly cooling the room. Set the mode control at High Fan or High Cool.
Remote sensing deactivating prematurely.	Remote control not located within range. Remote control signal obstructed.	Place remote control within 20 feet and 120° radius of the front of unit. Remove obstruction.

## TROUBLESHOOTING

### BEFORE CALLING FOR SERVICE

Error Code	Possible causes	Corrective Action
Code appears in the display.	Water tank is full.	Drain water from the product through drain hole and reset settings.
CH 01 CH 02	Short/open circuit in thermistor.	Unplug the air conditioner and contact a service center.

## REFURBISHED PRODUCT LIMITED THIRTY DAY WARRANTY

The Refurbished Product Service Center offers the following WARRANTY to the ORIGINAL purchaser of a product which we have refurbished.

This product that has been refurbished is warranted against any electronic or mechanical defects for a period of THIRTY DAYS from the date of the original purchase by the consumer. Since this unit was sold as a refurbished item, the warranty does not apply to any cosmetic appearance items such as scratches. Should a defect occur, the Refurbished Product Service Center will repair or, at its option, replace defective unit/parts with new or rebuilt materials without charge for either parts or labor. Replacement unit/parts will be warranted for the remaining portion of the original warranty period.

This warranty does not cover installation or damage from accident, misuse, abuse, improper wiring, incorrect voltage, operating the unit against the instructions in the owner's manual or any product which has been opened, altered, or tampered with.

This warranty does not cover costs for removal and/or installation of the unit for repair. Under no circumstances shall the service center be liable for any special, incidental or consequential damages or for any other expenses incurred by reason of use or sale of this product. This warranty is in lieu of any other warranties expressed or implied warranty of merchantability of fitness for particular use or otherwise.

This warranty gives the consumer specific legal rights and they may also have other rights which vary from State to State. Some States do not follow the exclusion or limitation of incidental or consequential damages, hence the above exclusion and limitations may not apply.

Refurbished Product Service Center  
13225 Marquardt Avenue Santa Fe Springs, CA 90670

## WARRANTY REPAIR INFORMATION

If you need service on your unit during the 30 day warranty period; please go to www.ConsumerServiceRefurbish.com or call the Refurbished Product Service Center at 562-946-3531 to obtain the required claim number. Once you obtain your claim number, pack the unit properly (the original carton is ideal for this purpose) along with a copy of your purchase receipt. Send the unit freight prepaid and insured to:

Refurbished Product Service Center,  
Attn: Customer Service Department 13225 Marquardt Avenue Santa Fe Springs, CA 90670

Your unit will be promptly exchanged and returned to you. We will refuse to accept delivery of the returned unit unless the assigned claim number appears on the outside of the shipping carton.

Owner's Information  
(Keep for your permanent records)

NAME: \_\_\_\_\_  
ADDRESS: \_\_\_\_\_  
CITY: \_\_\_\_\_ STATE: \_\_\_\_\_ ZIP CODE: \_\_\_\_\_  
PHONE: \_\_\_\_\_ E-MAIL: \_\_\_\_\_  
MODEL: \_\_\_\_\_ SERIAL NO.: \_\_\_\_\_



804106427



PRINTED IN MEXICO  
SC.26-03-2021  
SHNMDL:LP0818WNR\_B  
Add:LP1018WNR\_LP1218GXR  
OBPN: COV34636801  
Elbrd:J.E. / TAB