

Shark®

INSTRUCTIONS
804109277A

Please read this manual carefully before operating your unit and retain for future reference.

IMPORTANT SAFETY INSTRUCTIONS

FOR HOUSEHOLD USE ONLY

⚠ WARNING

To reduce the risk of injury, fire, electric shock, and property damage resulting from improper use of the appliance, carefully observe the following instructions. This unit contains electrical connections and moving parts that potentially present risk to the user.

⚠ **DANGER OF SCALDING: THE STEAM EMITTED FROM THE STEAM MOP IS VERY HOT AND MAY CAUSE SCALDING. PLEASE USE CAUTION WHEN USING THE STEAM MOP.**

- 1 Keep Steam Mop away from children.
- 2 When in use, **NEVER** turn the Steam Mop over on its side or direct steam toward people, pets, or plants.
- 3 Use the system **ONLY** for its intended purpose.
- 4 **DO NOT** use for space-heating.
- 5 **DO NOT** use outdoors.
- 6 **DO NOT** leave the Steam Mop unattended when plugged in. **ALWAYS** unplug the power cord from the electrical outlet when not in use and before servicing.
- 7 **DO NOT** allow the Steam Mop to be used by children. Close attention is necessary when used near children, pets, or plants.
- 8 Use **ONLY** as described in this instruction manual.
- 9 Use **ONLY** manufacturer's recommended accessories.
- 10 **DO NOT** use with damaged cord or plug. If the Steam Mop is not working as it should or has been dropped, damaged, left outdoors, or immersed in water, call a service center for examination and repair. Incorrect reassembly or repair can cause a risk of electrical shock or injury when the Steam Mop is used.
- 11 To protect against a risk of electric shock, **DO NOT** immerse the Steam Mop in water or any other liquid.
- 12 **DO NOT** handle the plug or Steam Mop with wet hands or operate it without wearing shoes.
- 13 **DO NOT** pull or carry by cord, use cord as a handle, close a door on cord, or pull cord around sharp edges or corners. **DO NOT** run Steam Mop over cord. Keep cord away from heated surfaces.
- 14 **DO NOT** unplug by pulling on power cord. To unplug, grasp the plug, not the power cord. **DO NOT** use extension cords or outlets with inadequate current-carrying capacity.
- 15 **DO NOT** put any objects into the steam nozzle openings. Discontinue use if the steam nozzle is blocked.
- 16 **DO NOT** put hands or feet under the Steam Mop. It gets very hot.
- 17 Use **ONLY** on flat, horizontal surfaces. **DO NOT** use on walls, counters, or windows.
- 18 **DO NOT** use on leather, wax-polished furniture, synthetic fabrics, velvet, or other delicate, steam-sensitive materials.
- 19 **DO NOT** add cleaning solutions, vinegar, scented perfumes, oils, or any other chemicals to the water used in the Steam Mop as this may damage it or make it unsafe for use. If you live in a hard-water area, we recommend using distilled water in your Steam Mop.
- 20 **NEVER** store or leave Steam Mop in one spot with Dirt Grip™ pad attached, as this may damage surfaces.
- 21 Before removing Dirt Grip pad, unplug the Steam Mop and allow it to cool.
- 22 Unplug the Steam Mop before cleaning. Use a dry or damp cloth to clean the exterior. **DO NOT** pour water on Steam Mop, or use alcohol, benzene, or paint thinner to clean.
- 23 Extreme caution should be exercised when using the Steam Mop to clean stairs.
- 24 **NEVER** use Steam Mop without the Dirt Grip pad attached.
- 25 Keep your work area well lit.
- 26 Store Steam Mop indoors in a cool, dry place.
- 27 To avoid circuit overload, **DO NOT** operate another appliance on the same socket (circuit) as the Steam Mop.
- 28 To avoid scalding injuries, **ALWAYS** unplug the Steam Mop and allow it to cool before removing or changing mop heads, accessories, or Dirt Grip pads.
- 29 Your Steam Mop is designed to clean hard floor surfaces that will withstand high heat. **DO NOT** use on unsealed wood or unglazed ceramic floors. On surfaces that have been treated with wax and on some no-wax floors, the sheen may be removed by the heat and steam action. We recommend testing an isolated area of the surface to be cleaned before proceeding. We also recommend that you check the use and care instructions from the floor manufacturer.

POLARIZED PLUG

To reduce the risk of electric shock, this Steam Mop has a polarized plug (one blade is wider than the other). As a safety feature, this plug will fit into a polarized outlet **ONLY** one way. If the plug does not fit fully into the outlet, reverse the plug. If it still does not fit, contact a qualified electrician. **DO NOT** force into outlet or try to modify to fit.

TECHNICAL SPECIFICATIONS

Voltage: 120V., 60Hz
Water Capacity: 375 ml (12.6 fl. oz.)

SAVE THESE INSTRUCTIONS

GETTING TO KNOW YOUR SHARK® STEAM MOP

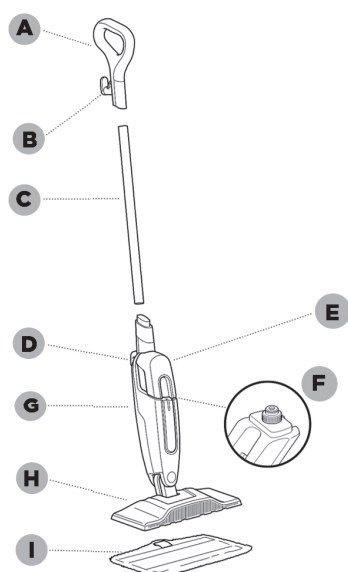
NOTE: When assembling your Steam Mop there may be a little water in or around the water tank. This is because we thoroughly test all of our Steam Mop before you buy them, so you get a quality Shark® Steam Mop.

MAIN UNIT

- A Steam Mop Handle
- B Upper Cord Wrap
- C Pole
- D Lower Cord Wrap
- E Removable Water Tank
- F Water Tank Cap
- G Steam Mop Body
- H Mop Head
- I Dirt Grip™ Pad

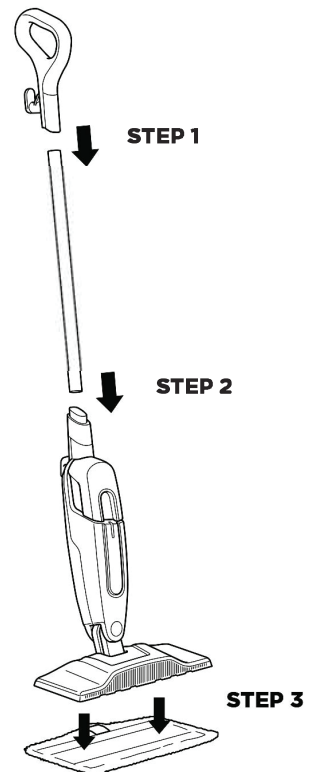
NOTE: Accessories may vary depending on the model. Refer to quick guide, if available.

The images shown here are for illustrative purposes only and may be subject to change.



ASSEMBLING YOUR STEAM MOP

- ⚠ WARNING: ALWAYS make sure the Steam Mop is UNPLUGGED when not in use. NEVER fill the Steam Mop when it is plugged into an electrical outlet. Unplug from the electrical outlet and allow the unit to cool before you fill the water tank, or attach or remove the mop head. Make sure you add only water to the tank. Chemicals or cleaning solutions (including vinegar) may damage the Steam Mop and could be unsafe for you and your family.**



- 1 Align the mop handle and mop pole so the arrow symbols inside them face forward. Insert either end of the pole into the handle until it clicks securely into place.
- 2 Align the assembled steam mop pole and the steam mop body, so their arrow symbols both face forward. Insert the pole into the top of the mop body, sliding it in until it clicks into place.
- 3 Place the Dirt Grip™ cleaning pad on the floor with the quick fastener strips facing up. Align the mop head directly over the pad, then press the mop head down onto the pad. The quick fastener strips will secure the pad to the mop head.

USING YOUR STEAM MOP

- ⚠ CAUTION: DO NOT scrub any one area for an extended period of time.**

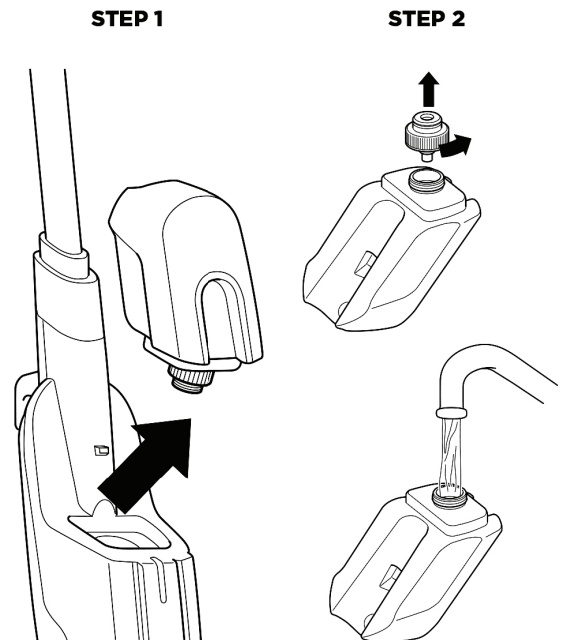
★ **IMPORTANT:** Before you fill up the tank, make sure your Steam Mop is unplugged from the electrical outlet.

★ **IMPORTANT:** Make sure you **DO NOT** use the Shark® Steam Mop without first attaching a Dirt Grip™ pad and filling the tank with water.

NOTE: To prolong the life of your Steam Mop, we recommend using distilled water.

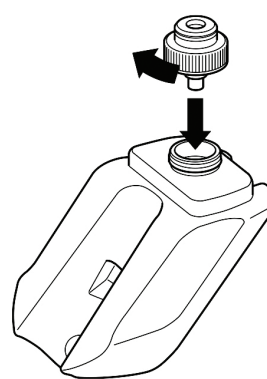
NOTE: Sweep or vacuum your floors prior to cleaning with your Steam Mop.

NOTE: Please wait 2 to 3 minutes for the Steam Mop to cool off before removing the Dirt Grip pad. **NEVER** leave the Steam Mop with a damp or wet Dirt Grip pad on any floor for an extended period of time.



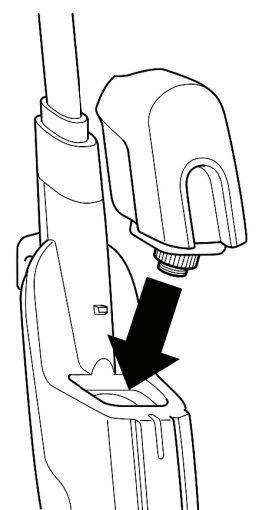
- 1 To remove the tank, lift it up and away from the Steam Mop body. Make sure to unplug the Steam Mop before removing the water tank.
- 2 To remove the water tank cap, twist counterclockwise. Fill tank completely with distilled water or tap water.

STEP 3



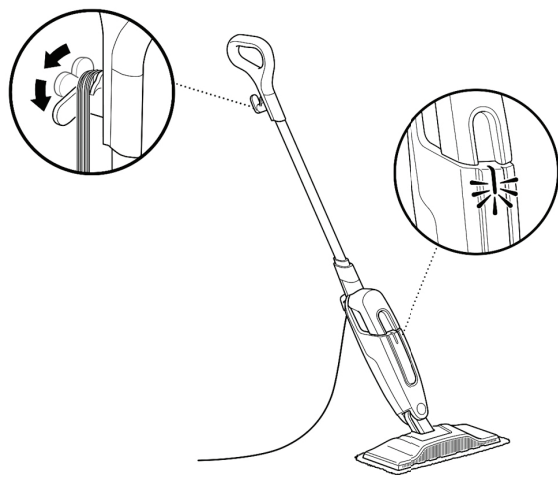
- 3 Replace cap on water tank and turn cap clockwise to seal.

STEP 4



- 4 To replace the water tank, align it so the cap faces down. Place the cap into the hole in the Steam Mop body and slide tank down until it clicks securely into place.

USING YOUR STEAM MOP - CONT.



- 1 Pull and twist the quick release cord holder to unwrap the power cord completely. When Steam Mop is plugged into an electrical outlet, the power light will illuminate. It takes approximately 30 seconds for the mop to heat up and the steam to be ready.
- 2 Pump the handle a few times in a downward motion. This pumping action will release steam as you mop and allows you to customize the amount of steam you want. Begin mopping with a forward and backward motion. The natural motion of mopping will produce steam.
- 3 When the water tank is empty, the Steam Mop will stop producing steam. Make sure to unplug the Steam Mop before refilling the water tank. Follow the water tank refilling instructions.



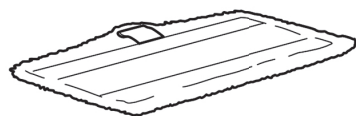
TO SANITIZE* WITH YOUR STEAM MOP

- 1 Start with a clean pad.
- 2 Pump the handle a few times in a downward motion.
- 3 Start mopping on an appropriate sealed hard-floor surface with a forward and backward motion. After three minutes, your unit is ready to be used to sanitize.
- 4 Using a forward and backward motion, move the unit over the area you seek to sanitize. Repeat at least 15 times.

*Sanitization studies were conducted under controlled test conditions. Household conditions and results may vary.

ACCESSORIES

Accessories may vary depending on the model. Refer to quick guide, if available.



DIRT GRIP™ WASHABLE PAD

These easy-to-attach, reusable pads feature a super-absorbent microfiber for locking in moisture and dirt, and scrubbing material for breaking up tough, stuck-on stains.

PAD CARE INSTRUCTIONS

Machine-wash the Dirt Grip pads separately with warm water using liquid detergent.

NEVER USE BLEACH, POWDERED DETERGENT, OR FABRIC SOFTENERS as they may damage or leave a coating on the Dirt Grip pads that will reduce their cleaning performance and absorbency. Dirt Grip pads should be line-dried or tumble-dried on a low setting, as this will extend the life of the microfiber fabric.

Loose fibers can indicate wearing of the microfiber fabric. **DO NOT** pull the loose fibers, as this can cause the weave to come undone. Simply trim the loose fibers with scissors.

For best cleaning results, we recommend replacing your Dirt Grip pads every 3 to 4 months following normal use. As with any fabric, dirt particles, grease, friction, and repeated washing can cause the fibers to break down, and you may notice an increase in the effort needed to push or pull the mop.

SharkNinja Operating LLC

Illustrations may differ from actual product. We are constantly striving to improve our products; therefore the specifications contained herein are subject to change without notice.

For SharkNinja U.S. Patent information, visit sharkninja.com/USPatents

© 2017 SharkNinja Operating LLC

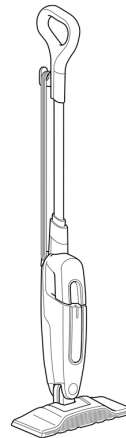
804109277A PRINTED IN MEXICO Elbrd: Y.T.
OBPN: S1000_S1200_Series_IB_REV
SC: 05-07-2019_TAB REV 2: NWMDL_M.C_12-17-21

MAINTAINING YOUR STEAM MOP

⚠ WARNING: To reduce the risk of shock and unintended operation, unplug unit before servicing.

AFTER USE AND STORAGE

- 1 Unplug the cord from the wall outlet, and wrap the cord around the cord hooks. Lock the Steam Mop in an upright standing position by raising the handle until the pole is standing straight up, perpendicular to the ground.
- 2 After cleaning, wait 2 to 3 minutes to let the Dirt Grip™ pad cool before touching it. When cool, remove pad from mop head to avoid damage to your floors. Remove the pad by stepping on the tab and lifting off the mop head, or by carefully pulling the pad off the mop head.
- 3 With the unit locked in the upright standing position, store it in a closet or the corner of a room.



TROUBLESHOOTING GUIDE

⚠ WARNING: To reduce the risk of shock and unintended operation, turn off power and unplug unit before servicing.

The Steam Mop will not turn on.

- Your Steam Mop should be securely plugged into an electrical outlet.
- Check your fuse or circuit-breaker.
- If your unit still doesn't work, call a service center.

Steam Mop will not make steam.

- Make sure there is water in the tank.
- If your water tank is full, prime the mop by pumping the handle in a downward motion a few times to release steam.

Steam Mop leaves water on the floor.

- **DO NOT** leave the Steam Mop on the floor with a damp or wet cleaning pad.
- If you are using tap water, we recommend switching to distilled water.
- Make sure that the cap is securely placed on the water tank.

Steam Mop left white spot on the floor.

- **DO NOT** leave the Steam Mop on the floor with a damp or wet cleaning pad.
- Do you have hard water? If you do, you might want to switch to distilled water.

Floors are cloudy, streaky, or spotty after steaming.

- The Dirt Grip™ pad might be dirty. Change to a new pad.
- If you washed the pad with powder detergent then the pad might have residual detergent left on it. Wash it again with liquid detergent.
- If you are cleaning in a kitchen area where there might be a buildup of grease, then use a degreasing agent such as an all-purpose cleaner or dish soap and paper towels to clean the area first.
- You might have left the mop in the same spot for too long.
- Do you have hard water? If you do, you might want to switch to distilled water.
- This might be left over from past cleaners used on the floor surface. Clean with the Steam Mop a few more times and see if the leftover cloudiness is removed.

Steam Mop is hard to push.

- Make sure the Dirt Grip pad is properly attached.

WARRANTY REPAIR INFORMATION

If you need service on your unit and this product requires repair during the 90 days warranty period; please go to www.ConsumerServiceRefurbish.com or call the **Refurbished Product Service Center** at 562-946-3531 to obtain the required return authorization (RA) number. Pack the unit properly (the original carton is ideal for this purpose) along with a copy of your purchase receipt and a letter describing the problem. Send the unit freight prepaid and insured to:

**Refurbished Product Service Center,
Att: Customer Service Department 13225 Marquardt Avenue Santa Fe Springs, CA 90670**

Your unit will be promptly repaired and returned to you.

We will refuse to accept delivery of the returned unit unless the assigned RA number appears on the outside of the shipping carton.

Owner's Information
(Keep for your permanent records)

NAME: _____

ADDRESS: _____

CITY: _____ STATE: _____ ZIP CODE: _____

PHONE: _____ E-MAIL: _____

MODEL: _____ SERIAL NO.: _____

REFURBISHED PRODUCT LIMITED NINETY DAYS WARRANTY

The **Refurbished Product Service Center** offers the following WARRANTY to the ORIGINAL purchaser of a product which we have refurbished.

This product that has been refurbished is warranted against any electronic or mechanical defects for a period of NINETY DAYS from the date of the original purchase by the consumer. Since this unit was sold as a refurbished item, the warranty does not apply to any cosmetic appearance items such as scratches. Should a defect occur, the **Refurbished Product Service Center** will repair or, at its option, replace defective unit/parts with new or rebuilt materials without charge for either parts or labor. Replacement unit/parts will be warranted for the remaining portion of the original warranty period.

This warranty does not cover installation or damage from accident, misuse, abuse, improper wiring, incorrect voltage, operating the unit against the instructions in the owner's manual or any product which has been opened, altered, or tampered with.

This warranty does not cover costs for removal and or installation of the unit for repair. Under no circumstances shall the service center be liable for any special, incidental or consequential damages or for any other expenses incurred by reason of use or sale of this product. This warranty is in lieu of any other warranties expressed or implied warranty of merchantability of fitness for particular use or otherwise.

This warranty gives the consumer specific legal rights and they may also have other rights which vary from State to State. Some States do not follow the exclusion or limitation of incidental or consequential damages, hence the above exclusion and limitations may not apply.

**Refurbished Product Service Center
13225 Marquardt Avenue Santa Fe Springs, CA 90670.**