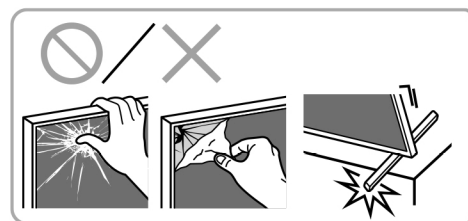


Setup Guide



Please read this guide carefully before operating your unit and retain for future reference.

1 SB1, SB2

2 **3** **A** **B** **1** 55, 65, 75, 85 SB2 SB1

Note: The image shown here is for illustrative purposes only and may be subject to change. The actual number of accessories may vary depending on the model.

***1** Refer Reference Guide ***2** Only for limited region/country/model.

Note: The image shown here is for illustrative purposes only and may be subject to change. The actual number of ports and their locations may vary depending on the model.

4 ***2** AC IN 交流输入

5 ***Batteries not included**

3 *3 VIDEO IN (VIDEO L/R), *4 VIDEO SPEAKER IN

5 *5 HDMI IN, *6 RS-232C, *7 IR IN, *8 *9 CABLE/ANTENNA

6 **1** **2**

7 ***3** 3.5/3.5 mm 1: L / G / L (Izq.) / L (E), 2: Video / Vidéo / Video, 3: GND / Tierra, 4: R / D / R (Der.) / R (D)

***4** S-CENTER SPEAKER IN, S-CENTER OUT, HDMI (eARC/ARC)

***5** < 21 mm, < 12 mm ***6** 3.5/3.5 mm 1: Tx D, 2: Rx D, 3: GND / Tierra

***7** 3.5/3.5 mm 1: IR, 2: GND / Tierra

***8** CABLE, ANTENNA

***9** < 7 mm, < 1.5/1.5 mm ***Tools not included**