

pure indoor living



AIR PURIFIERS
WITH AER1®
ALLERGEN PERFORMANCEPLUS
FILTERS

MODEL: CBAP520



IMPORTANT SAFEGUARDS

When using electrical appliances, basic safety precautions should always be followed to reduce the risk of fire, electric shock, and injury to persons. These precautions include:

1. Read all instructions before using the appliance.
2. To avoid fire or shock hazard, plug the appliance directly into a 120V AC electrical outlet.
3. If the filter is covered by a bag when shipped, remove plastic bag before use.
4. Keep the cord out of heavy traffic areas. To avoid fire hazard, NEVER put the cord under rugs, near heat registers, radiators, stoves, or heaters.
5. To protect against electrical hazards, DO NOT immerse the appliance in water or other liquids. Do not use near water.
6. Close supervision is necessary when any appliance is used by or near children, or disabled persons.
7. Always unplug the air purifier before moving or cleaning the unit, opening the grill, changing the filters and whenever the unit is not in use. To disconnect the unit, be sure to pull the plug and not the cord.
8. NEVER drop or insert any objects into the openings of the unit.
9. DO NOT operate any appliance with a damaged cord or plug.
10. If the motor fan fails to operate or the unit has been dropped or damaged in any manner,
11. Use appliance only for intended household use as described in this manual. Any other use not recommended by the manufacturer may cause fire, electric shock, or injury to persons.
12. DO NOT use outdoors.
13. NEVER place on a soft surface such as a bed or sofa as this could cause the unit to tip over and block the air inlet or outlet grills.
14. Keep unit away from heated surfaces and open flames.
15. DO NOT attempt to repair or adjust any electrical or mechanical functions on this unit. Doing so will void your warranty.
16. DO NOT place anything on top of unit.
17. NEVER use detergents, gasoline, glass purifier, furniture polish, paint thinner, or other household solvents to clean any part of the appliance.
18. Always turn the appliance off before unplugging it.
19. The ionizer in this appliance produces less ozone than the UL established limits of 50ppb (parts per billion). However, in high concentrations, ozone can be harmful to birds and small pets. To prevent ozone buildup, we suggest using the ionizer in well ventilated areas with the fan on.
20. This appliance should only be used in a room with temperatures between 40° F and 110° F.
21. **WARNING:** To reduce the risk of fire or electric shock, DO NOT use this appliance with any solid-state speed control device.

PLEASE READ AND SAVE THESE IMPORTANT SAFETY INSTRUCTIONS



THIS APPLIANCE HAS A POLARIZED PLUG (one blade is wider than the other). To reduce the risk of electric shock, this plug is intended to fit in a polarized outlet only one way. If the plug does not fit fully in the outlet, reverse the plug. If it still does not fit, contact a qualified electrician to install the proper outlet.

DO NOT ATTEMPT TO MODIFY THIS PLUG OR DEFEAT THIS SAFETY FEATURE IN ANY WAY.

IMPORTANT SAFEGUARDS - FEATURES

CORD SAFETY

- The length of cord used on this appliance was selected to reduce tangling and tripping hazards.
- If a longer cord is necessary, an approved extension cord may be used. The electrical rating of the extension cord must be equal to or greater than the rating of the air cleaner (see rating label marked on product).
- Care must be taken to arrange the extension cord so that it will not drape over the countertop or tabletop where it can be pulled on by children or accidentally tripped over.

GET TO KNOW YOUR AIR CLEANER

This unit is compatible with all Aer1® Filters. This allows you to choose the filter that is just right for you. Below is information on each filter:

TOTAL AIR - Advanced Dust Eliminating Technology

ODOR ELIMINATOR - 10x the odor fighting power

ALLERGEN REMOVER - True HEPA technology improves air quality for allergy sufferers

ALLERGEN PERFORMANCEPLUS - True HEPA technology improves air quality for allergy sufferers

SMOKE GRABBER - 99% effective at removing smoke from the air stream (*as small as 0.3 microns from air passing through the filter).

IONIZER

This appliance has an optional ionizer feature which, when turned on, releases negative ions into outgoing filtered air to help the air purification process.

What Are Ions?

Ions are tiny particles that carry a positive or negative charge. They exist naturally around us: in the air, water, and ground. Both positive and negative ions are colorless, odorless, and completely harmless.

How Does The Ionizer Work?

Negative ions help air purification by attaching themselves to very small airborne particles in the room. These particles take on a negative charge and may join with positively charged particles such as dust, pollen, smoke, and pet dander to form larger particles. These larger particles are then more easily captured by the filter system.

Important Notes:

Your ionizer may produce an occasional popping or crackling sound. This is normal and occurs when a small buildup of ions is discharged.

After extended use, you may notice dust around the grill or front panel. This is caused by negative ions exiting the air outlet, evidence of the ionizer's air cleaning effectiveness. You can remove the dust with a soft brush or clean, damp cloth.

Larger particles may be attracted to positively charged surfaces throughout the home, like walls or floors.

- This may occur more frequently when the filter is nearing the end of its usable product life and is unable to capture as many charged particles.
- Excessive amounts of pet dander, dust, or smoke may decrease the life expectancy of the filters and interfere with the ionization process.

To help prevent particles from attracting to surfaces throughout your home:

- You may want to run the ionizer less often.
- Check the condition of filters more frequently.

CAUTION: The ionizer in this appliance produces less ozone than the UL established limits of 50ppb. However, in high concentrations, ozone can be harmful to birds and small pets. To prevent ozone buildup, we suggest using the ionizer in well ventilated areas with the fan on.

IMPORTANT: Always check the condition of the Aer1® filters at the recommended intervals and replace filters if necessary (See FILTER REPLACEMENT INSTRUCTIONS).

Using the ionizer with dirty filters may result in dirty particles exiting the air cleaner and attracting to walls, carpets, furniture, or other household objects. These dirty particles may prove difficult to remove.

FEATURES - OPERATIONS

FILTER CHECK INDICATOR

Your Air Cleaner includes Aer1® Allergen PerformancePlus Filters, specially designed to improve air quality for allergy sufferers! The Aer1® Allergen PerformancePlus Filters last 12 months. See back panel for other filter options.

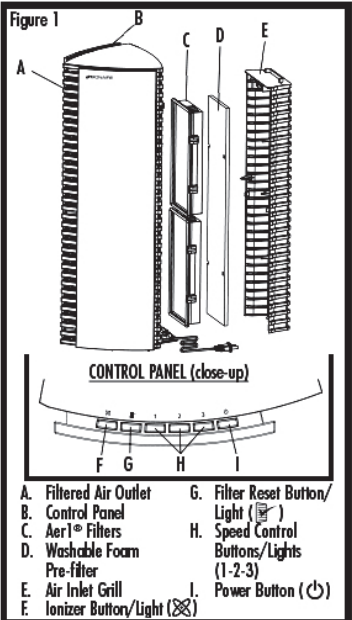
The Filter Check Indicator is designed to remind you to check and change your filters every 12 months. To reset the Filter Check Indicator, press the Filter Reset Button (G) for 3 seconds. The Filter Check Indicator will flash 6 times to indicate that it has been reset.

THREE SPEED SETTINGS

For optimum air filtration, operate your Bionaire® air cleaner continuously on the highest (3) setting. Its rugged motor has been designed to give many years of use. For quieter operation (such as in a bedroom), select the lowest (1) setting.

BEFORE USE

1. Carefully unpack your air cleaner.
2. Select a firm, level surface with no obstructions to the air inlets or outlets.
3. Access your Aer1® Filters. If the filters are covered by bags when shipped, remove plastic bags before use and place filters into unit. (Reference FILTER REPLACEMENT INSTRUCTIONS).



FEATURES - OPERATIONS CLEANING / MAINTENANCE

TROUBLESHOOTING AER1 FILTER SERIES®

OPERATING INSTRUCTIONS

IMPORTANT:

- REMOVE ALL PLASTIC BAGS FROM FILTERS BEFORE USE.
 - DO NOT POINT FILTERED AIR OUTLET TOWARDS WALL.
1. Plug into a 120V AC electrical outlet.
 2. Press the Power Button (⏻). The air cleaner will turn onto HIGH, the High (3) speed button light will illuminate letting you know the power is on and running at High setting. To turn the air cleaner off at any time, press the power button and all button lights will go off.
 3. You can then select the desired speed setting. This air cleaner has three speed settings. You can select from HIGH (3), MEDIUM (2), or LOW (1) by pressing the desired operating speed control button on the control panel. The corresponding button light will illuminate to indicate which setting being selected.
 4. To release negative ions into the filtered air, press the Ionizer Button (⊗) and the button light will illuminate.
 5. This unit has a built in memory function that will recall the last setting from the previous use. This memory function will only operate if the unit remains plugged in between uses.

NOTE: The Ionizer will not work unless the unit is running.

CLEANING AND MAINTENANCE

Cleaning the unit:

1. Turn off and unplug the air cleaner.
2. The outside of the unit can be cleaned with a soft, clean damp cloth.
3. The air inlet grill (see figure 1) can be cleaned with a soft, clean damp cloth.
4. The filtered air outlet can be cleaned of dust with a small soft brush.
5. If you wish to clean the inside of the air cleaner, please only use a dry, soft cloth to wipe it down. DO NOT WASH the Aer1® filters. The Pre-filter (D) can be washed by using a mild dish soap and water. Rinse thoroughly. Allow to air dry completely prior to reinstalling into the Air Inlet Grill (E).

6. NEVER use detergents, gasoline, glass cleaner, furniture polish, paint thinner or other household solvents to clean any part of the air cleaner.
- WARNING:** Do not allow moisture to come in contact with the main housing of the air cleaner.

FILTER REPLACEMENT INSTRUCTIONS

Every few weeks, check the condition of filters. Filter life will vary, depending on air quality and usage (see below). Under normal conditions of continuous use, the Aer1® Total Air, Odor and Smoke Filter will last 4 months while the Allergen and Allergen PerformancePlus Filter will last 12 months.

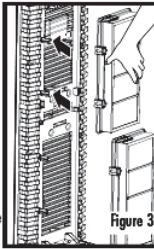
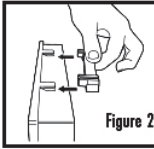
After approximately 12 months of operation, the Filter Check Indicator Light (⊗) will illuminate to alert you to service the filter.

To replace your filter:

1. Turn off and unplug the air cleaner before attempting to replace the filters.
2. Remove each of the filters from the unit by pulling them gently towards you.
3. Discard the Aer1® filters. DO NOT attempt to clean them.
4. Remove protective plastic bags and install new Aer1® filters into the unit.

NOTE: Ensure proper assembly of the filter dip to the filter. Attach the filter clip and filter assembly to the air cleaner hang tabs:

- Make sure the hang tab is securely in place. Align the clip on the side of the Aer1® filter with the rails on the inside of the unit. Gently slide the filter onto the rail (see Figures 2 and 3).

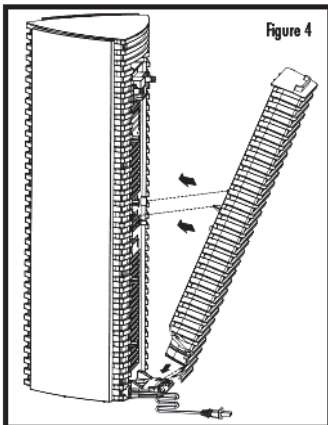


TIPS AND TROUBLESHOOTING

Problem	Solution
• Unit will not operate	<ul style="list-style-type: none"> ✓ Make sure the unit is plugged in and outlet is energized. ✓ Make sure unit is turned ON. ✓ Make sure the Air Inlet Grill is assembled to unit and closed completely.
• Decreased air flow	<ul style="list-style-type: none"> ✓ Make sure nothing is blocking air inlet and filtered air outlets. ✓ Remove all plastic bags from filters. ✓ Check condition of filters and replace if necessary.
• Excessive noise	<ul style="list-style-type: none"> ✓ Remove plastic bags from filters. ✓ Make sure all parts, including filters, filter clips, and air inlet grill are firmly positioned in place.
• The filter check indicator will not reset.	<ul style="list-style-type: none"> ✓ Check condition of the filters and replace if necessary. ✓ Press and hold the Filter Reset Button for 3 seconds under power on condition (see Filter Replacement Instructions for details).

Filter Type	Technology	Consumer Benefit
Total Air	99% HEPA-Type technology. Infused with Arm & Hammer® baking soda.	Suitable for dust reduction. Delivers 30% better air quality.
Odor Eliminator	10 times the odor fighting power. Contains Arm & Hammer® baking soda, carbon and zeolite for odor control.	Suitable for eliminating odors from pets, tobacco smoke and cooking fumes.
Allergen Remover	99.97% True HEPA technology. Removes up to 99.97% of particulates passing through the filter such as pollen, dust, mold and dander.	Suitable for allergy sufferers.
THIS UNIT COMES WITH Allergen PerformancePlus	99.99% True HEPA technology. Helps remove up to 99.99% of particles passing through the filter such as pollen, dust, mold and dander.	Suitable for allergy sufferers.
Smoke Grabber	HEPA-type filtration. Triple layer protection specially formulated with Arm & Hammer® Baking Soda, Carbon and Zeolite. Remove up to 99% of smoke and pollutants from the air stream.	Suitable for reducing smoke and odors from smoke and VOC's.

CLEANING / MAINTENANCE



5. Place air inlet grill back onto unit by aligning the bottom of the air inlet grill into the slots located at the base of the rear housing of the unit, and then attach the inlet grill onto the unit and close securely (see Figure 4).
5. Reset the Filter Check Indicator by following the below instructions:
 - Filters with a 4-month filter life: Press and hold the Filter Reset Button (⊗) and then the Low Speed Button (1), and hold both buttons for 3 seconds. The indicator light will flash 3 times to indicate that 4-month timer is activated. This Filter Check indicator is a reminder to perform maintenance to wipe your unit clean, wash the foam pre-filter and to replace the Aer1® filters.
 - Filters with a 12 month filter life: Press the Filter Reset button (⊗) for 3 seconds. The indicator light will flash 6 times to indicate that 12-month timer is activated. This filter Check indicator is a reminder to perform annual maintenance to wipe your unit clean, wash the foam pre-filter and to replace the Aer1® filters.

Air Cleaner Model #	Filter Quantity Needed	Compatible with all filter models below	Filter Description
CBAP520	2	HAPF30AT HAPF30AO HAPF30AS HAPF300AH HAPF300AP (D filter) HAPF30 (A filter)	Aer1® Total Air Filter Aer1® Odor Filter Aer1® Smoke Grabber Filter Aer1® Allergen Remover Filter Aer1® Allergen PerformancePlus™ "D" Filter Holmes® "A" Filter

PRINTED IN MEXICO

SC.07.02.2018

804108503

OBPN:CBAP520_13EM1

SHNMDL:CBAP520_B



2P