

SONY® Sound Bar

To download your copy of the complete
Owner's Manual:

<http://consumerservicerefurbish.com>

Click on: **Download Owners Manual**
On Manufacturer or Brand, select: **SONY**
On Product Type, select: **Audio**
On Model Number, select: **HTST5**

Please read this manual carefully before operating your set and retain it for future reference.

Some of the content in this manual may differ from your unit.

WARNING

To reduce the risk of fire or electric shock, do not expose this apparatus to rain or moisture.

The unit is not disconnected from the mains as long as it is connected to the AC outlet, even if the unit itself has been turned off.

To reduce the risk of fire, do not cover the ventilation opening of the appliance with newspapers, tablecloths, curtains, etc. Do not expose the appliance to naked flame sources (for example, lighted candles).

To reduce the risk of fire or electric shock, do not expose this appliance to dripping or splashing, and do not place objects filled with liquids, such as vases, on the appliance.

As the main plug is used to disconnect the unit from the mains, connect the unit to an easily accessible AC outlet. Should you notice an abnormality in the unit, disconnect the main plug from the AC outlet immediately.

Do not install the appliance in a confined space, such as a bookcase or built-in cabinet.

Do not expose batteries or appliances with battery-installed to excessive heat, such as sunshine and fire.

Indoor use only.

For the customers in the U.S.A.



This symbol is intended to alert the user to the presence of uninsulated "dangerous voltage" within the product's enclosure that may be of sufficient magnitude to constitute a risk of electric shock to persons.



This symbol is intended to alert the user to the presence of important operating and maintenance (servicing) instructions in the literature accompanying the appliance.

Important Safety Instructions

- 1) Read these instructions.
- 2) Keep these instructions.
- 3) Heed all warnings.
- 4) Follow all instructions.
- 5) Do not use this apparatus near water.
- 6) Clean only with dry cloth.
- 7) Do not block any ventilation openings. Install in accordance with the manufacturer's instructions.
- 8) Do not install near any heat sources such as radiators, heat registers, stoves, or other apparatus (including amplifiers) that produce heat.
- 9) Do not defeat the safety purpose of the polarized or grounding-type plug. A polarized plug has two blades with one wider than the other. A grounding type plug has two blades and a third grounding prong. The wide blade or the third prong are provided for your safety. If the provided plug does not fit into your outlet, consult an electrician for replacement of the obsolete outlet.
- 10) Protect the power cord from being walked on or pinched particularly at plugs, convenience receptacles, and the point where they exit from the apparatus.
- 11) Only use attachments/accessories specified by the manufacturer.
- 12) Use only with the cart, stand, tripod, bracket, or table specified by the manufacturer, or sold with the apparatus. When a cart is used, use caution when moving the cart/apparatus combination to avoid injury from tip-over.
- 13) Unplug this apparatus during lightning storms or when unused for long periods of time.
- 14) Refer all servicing to qualified service personnel. Servicing is required when the apparatus has been damaged in any way, such as power-supply cord or plug is damaged, liquid has been spilled or objects have fallen into the apparatus, the apparatus has been exposed to rain or moisture, does not operate normally, or has been dropped.

CAUTION

You are cautioned that any changes or modifications not expressly approved in this manual could void your authority to operate this equipment.

This equipment must not be co-located or operated in conjunction with any other antenna or transmitter.

This equipment complies with FCC radiation exposure limits set forth for an uncontrolled environment and meets the FCC radio frequency (RF) Exposure Guidelines. This equipment should be installed and operated keeping the radiator at least 20cm or more away from person's body (excluding extremities: hands, wrists, feet and ankles).

Compliance with FCC requirement 15.407(c)
Data transmission is always initiated by software, which is the passed down through the MAC, through the digital and analog baseband, and finally to the RF chip. Several special packets are initiated by the MAC. These are the only ways the digital baseband portion will turn on the RF transmitter, which it then turns off at the end of the packet. Therefore, the transmitter will be on only while one of the aforementioned packets is being transmitted. In other words, this device automatically discontinues transmission in case of either absence of information to transmit or operational failure.

Frequency Tolerance: ±20 ppm or less

5.15 - 5.25 GHz band is restricted to indoor operations only.

The following FCC statement applies only to the version of this model manufactured for sale in the U.S.A. Other versions may not comply with FCC technical regulations.

NOTE:

This equipment has been tested and found to comply with the limits for a Class B digital device, pursuant to Part 15 of the FCC Rules. These limits are designed to provide reasonable protection against harmful interference in a residential installation. This equipment generates, uses and can radiate radio frequency energy and, if not installed and used in accordance with the instructions, may cause harmful interference to radio communications.

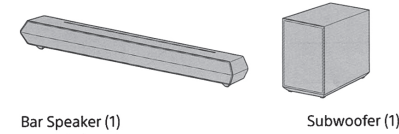
However, there is no guarantee that interference will not occur in a particular installation. If this equipment does cause harmful interference to radio or television reception, which can be determined by turning the equipment off and on, the user is encouraged to try to correct the interference by one or more of the following measures:

- Reorient or relocate the receiving antenna.
- Increase the separation between the equipment and receiver.
- Connect the equipment into an outlet on a circuit different from that to which the receiver is connected.
- Consult the dealer or an experienced radio/TV technician for help.

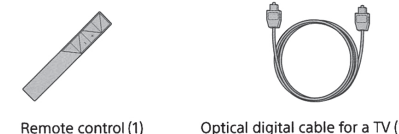
Properly shielded and grounded cables and connectors must be used for connection to host computers and/or peripherals in order to meet FCC emission limits.

Setup

1 What's in the box ?



Bar Speaker (1) Subwoofer (1)

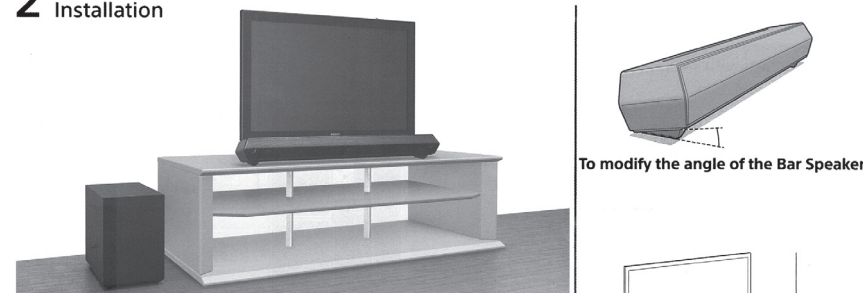


Remote control (1) Optical digital cable for a TV (1)

Setting up the remote control (Batteries not supplied)

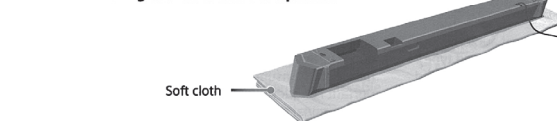
1. Face the rear of the remote control upward and slide down the cover.
2. Pull up the battery compartment cover and insert in the orientation shown in illustration two AAA batteries.

2 Installation

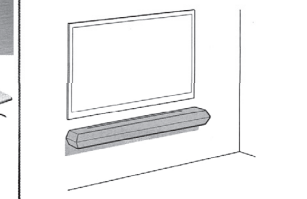


To modify the angle of the Bar Speaker

When connecting cables to the Bar Speaker



Soft cloth

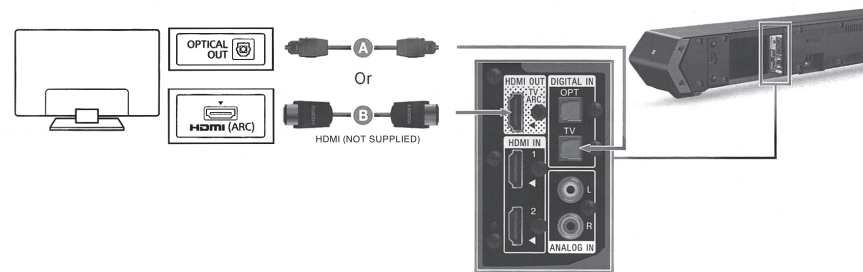


To mount the Bar Speaker on a wall

To prevent the Bar Speaker falling, place the rear side of the Bar Speaker facing upward and in a stable place for the cable connection. When doing so, spread a soft cloth etc. to prevent damage.

3 Connection

Connecting with TV

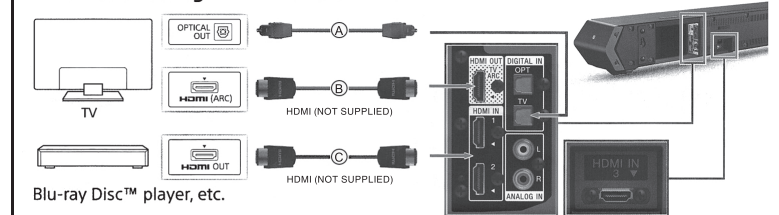


If the TV to be connected is not equipped with an optical audio output terminal, connect an HDMI cable **B** (sold separately, High Speed type). Subsequently, you need to connect to the HDMI input terminal labeled "ARC."

If the HDMI input terminal labeled "ARC" is connected to another device, disconnect the other device from the TV and connect this Bar Speaker.

*Note: The image shown here is for illustrative purposes only and may be subject to change. The actual number of ports and their locations may vary, depending on the model.

When connecting with TV and other devices

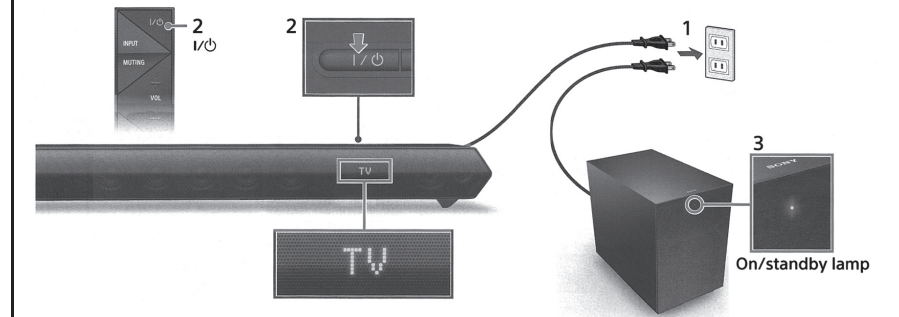


Blu-ray Disc™ player, etc.

This is a connection for enjoying surround sound more effectively. If the HDMI input terminal on the TV is not labeled "ARC," connect to the TV with optical digital cable **A** (included) in addition to HDMI cable **B** (sold separately, High Speed type).

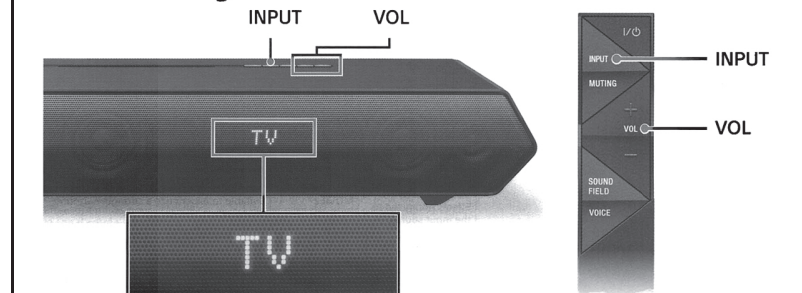
For connection **C** (sold separately, High Speed type), when connected to another device and the TV, disconnect the other device from the TV and connect it to the Bar Speaker.

4 Turning on the system



- 1 Connect the AC power cords (mains leads).
- 2 Press the I/O (on/standby) button. The display lights.
- 3 Confirm that the on/standby lamp of the subwoofer is lit in green. If not, the wireless transmission is not activated. Refer to "No sound is heard from the subwoofer." of "Troubleshooting" in the supplied Operating Instructions.
- 4 Turn on the connected device.

5 Listening to the sound



Input device selected

Listening to the audio of the TV

- 1 Press the INPUT button repeatedly to select "TV" input.
- 2 Press the VOL button to adjust the volume.

To listen to audio from an input device other than the TV
Press the INPUT button repeatedly until the desired input device is indicated on the display.

TV → HDMI 1 → HDMI 2 → HDMI 3 → OPT → ANALOG → BT AU

Setup completed! Enjoy!

*The cables mentioned in this manual are not supplied with your unit.

Basic Operations

Enjoying the sound effects



To set a sound effect, press one of the sound effect buttons on the remote control repeatedly to select the desired mode while checking the display.

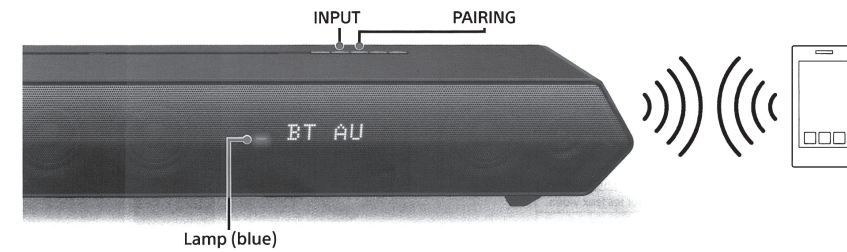
SOUND FIELD: Effects optimized to the input sound.	CLEARAUDIO+	The suitable sound setting is automatically selected for the sound source.
	STANDARD	Sound effects optimized for TV programs.
	MOVIE1	Sound effects optimized for movie-viewing. Suitable to experience a wider surround-sound effect.
	MOVIE2	Sound effects optimized for movie-viewing. Suitable to experience a stronger surround-sound effect.
	MUSIC	Sound effects optimized for music.
	GAME	Sound effects optimized for game play.
VOICE: Helps make dialogues clearer.	TYPE1	Standard
	TYPE2	Dialogue range is enhanced.
	TYPE3	Dialogue range is enhanced, and the parts of range difficult to be discerned by the elderly are boosted.
NIGHT: Sound is output at low volume with minimum loss of fidelity and clarity of dialogue.	ON	Activates the Night mode function.
	OFF	Inactivates the Night mode function.

*The remote control may vary depending on the model: The buttons on remote control may have a different name or location than the remote control shown in this manual.

Listening to the sound from BLUETOOTH devices

BLUETOOTH

When registering BLUETOOTH devices



To pair the system with the device (Pairing)

- Press the PAIRING button. The lamp flashes quickly during BLUETOOTH pairing.
- Set your BLUETOOTH device to pairing mode and select "SONY:HT-ST5." If a Passkey is requested, enter "0000."
- Make sure that the lamp lights up. (Connection has been established.)

Hint

Once the BLUETOOTH connection is established, an indication recommending which application to download will be displayed, according to what equipment you have connected. Following the instructions displayed, an application called "SongPal," which will enable you to operate this system, can be downloaded. Refer to "Controlling the system using a smartphone or tablet device (SongPal)" in the supplied Operating Instructions for details on "SongPal."

To listen to the sound of the registered device

- Press the INPUT button repeatedly to display "BT AU." The lamp flashes during attempting BLUETOOTH pairing.
- On the BLUETOOTH device, select "SONY:HT-ST5."
- Make sure that the lamp lights up. (Connection has been established.)
- Start the audio playback with the music software in the connected BLUETOOTH device.

When using one-touch connection (NFC)



Lamp (blue)

- Download, install, and start the "NFC Easy Connect" app on your smartphone.
- Touch the N mark of the Bar Speaker with the smartphone.
- Make sure that the lamp lights up. (Connection has been established.)

• Compatible devices: Smartphones, tablets, and music players with the NFC function built-in (OS: Android™ 2.3.3 or later, excluding Android 3.x)

Specifications

Bar Speaker (SA-ST5)

Amplifier section

U.S. models:
POWER OUTPUT AND TOTAL HARMONIC DISTORTION: (FTC)

Front L + Front R:
With 8 ohms loads, both channels driven, from 200 - 20,000 Hz: rated 15 Watts per channel minimum RMS power, with no more than 1% total harmonic distortion from 250 milliwatts to rated output.

POWER OUTPUT (reference)
Front L/Front R speaker blocks: 40 Watts (per channel at 8 ohms, 1 kHz)
Center speaker block: 40 Watts (per channel at 8 ohms, 1 kHz)

Canadian models:

POWER OUTPUT (rated)
Front L + Front R: 35 W + 35 W
(at 8 ohms, 1 kHz, 1% THD)

POWER OUTPUT (reference)
Front L/Front R speaker blocks: 40 Watts (per channel at 8 ohms, 1 kHz)
Center speaker block: 40 Watts (per channel at 8 ohms, 1 kHz)

Inputs

HDMI IN 1/2/3*
OPTICAL IN (OPT/TV)
ANALOG IN

* These 3 jacks are identical. Using any of them makes no difference.

Output

HDMI OUT (TV ARC)

BLUETOOTH section

Communication system
BLUETOOTH Specification version 3.0

Output
BLUETOOTH Specification Power Class 2

Maximum communication range
Line of sight approx. 10 m (33 ft)¹⁾

Maximum number of devices to be registered
9 devices

Frequency band
2.4 GHz band (2.4000 GHz - 2.4835 GHz)

Modulation method
FHSS (Freq Hopping Spread Spectrum)

Compatible BLUETOOTH profiles:²⁾
A2DP 1.2 (Advanced Audio Distribution Profile)
AVRCP 1.3 (Audio Video Remote Control Profile)

Supported Codecs³⁾
SBC⁴⁾, AAC⁵⁾, aptX

Transmission range (A2DP)
20 Hz - 20,000 Hz (Sampling frequency 44.1 kHz)

- The actual range will vary depending on factors such as obstacles between devices, magnetic fields around a microwave oven, static electricity, cordless phone, reception sensitivity, operating system, software application, etc.
- BLUETOOTH standard profiles indicate the purpose of BLUETOOTH communication between devices.
- Codec: Audio signal compression and conversion format
- Subband Codec
- Advanced Audio Coding

Front L/Front R speaker blocks

Speaker system
2-way speaker system, Acoustic suspension

Speaker
Woofer: 60 mm (2 3/8 in) cone type
Tweeter: 20 mm (13/16 in) balanced drive type

Rated impedance
8 ohms

Center speaker block

Speaker system
Full range speaker system, Acoustic suspension

Speaker (5 speakers)
60 mm (2 3/8 in) cone type

Rated impedance
8 ohms

General

Power requirements
120 V AC, 60 Hz

Power consumption
On: 55 W
Standby mode: 0.5 W or less
BLUETOOTH Standby mode: 0.5 W or less

Dimensions (approx.) (w/h/d)
1,030 mm × 120 mm × 120 mm (40 5/8 in × 4 3/4 in × 4 3/4 in) (with stands)
1,030 mm × 101 mm × 116 mm (40 5/8 in × 4 in × 4 5/8 in) (without stands)

Mass (approx.)
6.1 kg (13 lb 7 1/8 oz)

Subwoofer (SA-WST5)

POWER OUTPUT (reference)
100 W (per channel at 4 ohms, 100 Hz)

Speaker system
Subwoofer, Acoustic suspension

Speaker
180 mm (7 1/8 in) cone type

Rated impedance
4 ohms

Power requirements
120 V AC, 60 Hz

Power consumption
On: 30 W
Standby mode: 0.5 W or less

Dimensions (approx.)
242 mm × 355 mm × 407 mm
(9 5/8 in × 14 in × 16 1/8 in) (w/h/d)

Mass (approx.)
11 kg (24 lb 4 oz)

Wireless transmitter/receiver section

Communication system
Wireless Sound Specification version 3.0

Frequency band
5.2 GHz (5.180 GHz - 5.240 GHz)
5.8 GHz (5.736 GHz - 5.814 GHz)

Modulation method
DSSS

Digital audio input formats supported by the system

Dolby Digital	DTS-HD Master Audio*
Dolby Digital Plus*	DTS-HD High-Resolution Audio*
Dolby TrueHD*	DTS-HD Low Bit Rate*
DTS	Linear PCM 2ch 48 kHz or less
DTS 96/24	Linear PCM Maximum 7.1ch 192 kHz or less*

* It is possible to input these formats only with HDMI connection.

REFURBISHED PRODUCT LIMITED THIRTY DAY WARRANTY

The **Refurbished Product Service Center** offers the following WARRANTY to the ORIGINAL purchaser of a product which we have refurbished.

This product that has been refurbished is warranted against any electronic or mechanical defects for a period of THIRTY DAYS from the date of the original purchase by the consumer. Since this unit was sold as a refurbished item, the warranty does not apply to any cosmetic appearance items such as scratches. Should a defect occur, the **Refurbished Product Service Center** will repair or, at its option, replace defective unit/parts with new or rebuilt materials without charge for either parts or labor. Replacement unit/parts will be warranted for the remaining portion of the original warranty period.

This warranty does not cover installation or damage from accident, misuse, abuse, improper wiring, incorrect voltage, operating the unit against the instructions in the owner's manual or any product which has been opened, altered, or tampered with.

This warranty does not cover costs for removal and or installation of the unit for repair. Under no circumstances shall the service center be liable for any special, incidental or consequential damages or for any other expenses incurred by reason of use or sale of this product. This warranty is in lieu of any other warranties expressed or implied warranty of merchantability of fitness for particular use or otherwise.

This warranty gives the consumer specific legal rights and they may also have other rights which vary from State to State. Some States do not follow the exclusion or limitation of incidental or consequential damages, hence the above exclusion and limitations may not apply.

Refurbished Product Service Center
13225 Marquardt Avenue Santa Fe Springs, CA 90670

WARRANTY REPAIR INFORMATION

If you need service on your unit during the 30 day warranty period; please go to www.ConsumerServiceRefurbish.com or call the Refurbished Product Service Center at 562-946-3531 to obtain the required claim number. Once you obtain your claim number, pack the unit properly (the original carton is ideal for this purpose) along with a copy of your purchase receipt.

Send the unit freight prepaid and insured to:

Refurbished Product Service Center,
Att: Customer Service Department 13225 Marquardt Avenue Santa Fe Springs, CA 90670

Your unit will be promptly exchanged and returned to you.
We will refuse to accept delivery of the returned unit unless the assigned claim number appears on the outside of the shipping carton.

Owner's Information
(Keep for your permanent records)

NAME: _____

ADDRESS: _____

CITY: _____ STATE: _____ ZIP CODE: _____

PHONE: _____ E-MAIL: _____

MODEL: _____ SERIAL NO.: _____

W

805001233



PRINTED IN MEXICO

SC:14.01.2020 / OBP:*453829111* (2)

SHNMDL:HTST5_B / TAB / Elbrd:J.E.