

**REFURBISHED PRODUCT LIMITED THIRTY DAY WARRANTY**

The **Refurbished Product Service Center** offers the following WARRANTY to the ORIGINAL purchaser of a product which we have refurbished.

This product that has been refurbished is warranted against any electronic or mechanical defects for a period of THIRTY DAYS from the date of the original purchase by the consumer. Since this unit was sold as a refurbished item, the warranty does not apply to any cosmetic appearance items such as scratches. Should a defect occur, the **Refurbished Product Service Center** will repair or, at its option, replace defective unit/parts with new or rebuilt materials without charge for either parts or labor. Replacement unit/parts will be warranted for the remaining portion of the original warranty period.

This warranty does not cover installation or damage from accident, misuse, abuse, improper wiring, incorrect voltage, operating the unit against the instructions in the owner's manual or any product which has been opened, altered, or tampered with.

This warranty does not cover costs for removal and or installation of the unit for repair. Under no circumstances shall the service center be liable for any special, incidental or consequential damages or for any other expenses incurred by reason of use or sale of this product. This warranty is in lieu of any other warranties expressed or implied warranty of merchantability of fitness for particular use or otherwise.

This warranty gives the consumer specific legal rights and they may also have other rights which vary from State to State. Some States do not follow the exclusion or limitation of incidental or consequential damages, hence the above exclusion and limitations may not apply.

**Refurbished Product Service Center**  
13225 Marquardt Avenue Santa Fe Springs, CA 90670

**WARRANTY REPAIR INFORMATION**

If you need service on your unit during the 30 day warranty period; please go to [www.ConsumerServiceRefurbish.com](http://www.ConsumerServiceRefurbish.com) or call the Refurbished Product Service Center at 562-946-3531 to obtain the required claim number. Once you obtain your claim number, pack the unit properly (the original carton is ideal for this purpose) along with a copy of your purchase receipt. Send the unit freight prepaid and insured to:

**Refurbished Product Service Center,**  
Att: Customer Service Department 13225 Marquardt Avenue Santa Fe Springs, CA 90670

Your unit will be promptly exchanged and returned to you.

We will refuse to accept delivery of the returned unit unless the assigned claim number appears on the outside of the shipping carton.

**Owner's Information**  
(Keep for your permanent records)

NAME: \_\_\_\_\_  
ADDRESS: \_\_\_\_\_  
CITY: \_\_\_\_\_ STATE: \_\_\_\_\_  
ZIP CODE: \_\_\_\_\_ PHONE: \_\_\_\_\_  
E-MAIL: \_\_\_\_\_  
MODEL: \_\_\_\_\_  
SERIAL NO.: \_\_\_\_\_

PRINTED IN MEXICO SC:07.29.2021  
OBPN:571513971\_00\_0920  
SHNMDL:PACEX390LN1ALBK\_B  
PAGS:TAB ELBR:M.C.



**Important safeguard**

- Use this appliance only as described in this instruction manual. As with any electrical appliance, the instructions aim to cover as many situations as possible. Caution and common sense should be used when operating and installing this air conditioner.
- This appliance has been manufactured to cool and dehumidify domestic environments and must not be used for other purposes.
- It is dangerous to alter or modify the unit's characteristics in any way.
- The appliance must be installed in accordance with the relevant national legislation.
- Should repairs be necessary, contact a service center.
- The appliance is not intended for use by persons (including children) with reduced physical, sensory or mental capabilities, or lack of experience and knowledge, unless they have been given supervision or instruction concerning use of the appliance by a person responsible for their safety. Children should be supervised to ensure that they do not play with the appliance.
- If the power cable is damaged, it must be replaced by a service center.
- Always ensure the appliance is plugged into a grounded 3-prong outlet. If you have any doubts check with a qualified electrician.
- Do not use extension cables.
- Before cleaning or maintenance operations, always unplug the unit from the outlet.
- Do not pull on or place strain on the power cord when moving the appliance.
- The appliance should not be installed where the atmosphere may contain combustible gases, oil or sulphur, or near heat sources.
- Do not rest hot or heavy objects on the appliance.
- Clean the filters at least once a week.
- Avoid using heaters near the unit.
- The unit should be transported in a vertical position. If this is not possible secure the unit at an angle, do not lie it horizontally.
- Before transporting the unit, drain the unit. After transportation, wait at least 6 hours before switching the unit on.
- The packaging materials can be recycled. You are therefore recommended to place them in the special containers for differentiated waste collection.
- This appliance is fitted with a special safety device. When the compressor switches off, this device prevents it from switching on again for at least 3 minutes.
- WARNING: Changes or modifications not expressly approved by the party responsible for compliance could void the user's authority to operate the equipment.

**EX Series**

**PORTABLE AIR CONDITIONER**

Instructions for use. Keep these instructions

ELECTRIC CHARACTERISTICS

115V ~60 Hz



It's important to read this manual prior to using your new product for the first time.



**Specific warnings for appliances with R410A refrigerant gas**

R410A is a refrigerant that complies with European ecological standards; nevertheless, it is recommended not to pierce the cooling circuit of the machine. At the end of its useful life, deliver the appliance to a special waste collection centre for disposal. This hermetically sealed system contains fluorinated greenhouse gases.

**ENVIRONMENTAL INFORMATION:**

This unit contains fluorinated greenhouse gases covered by the Kyoto Protocol. Maintenance and disposal must be carried out by qualified personnel only (R410A, GWP=2088).

**Save these instructions**

This product is for household only

**INTRODUCTION**

Thank you for choosing a De'Longhi product. Please take a few moments to read the instructions to avoid risks or damage to the appliance.

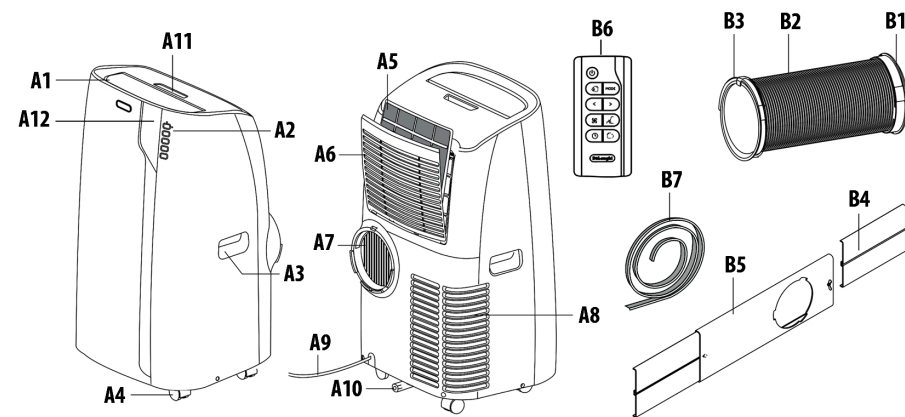
**DESCRIPTION**

**Description of the appliance**

- A1 air outlet flap
- A2 control panel
- A3 handles
- A4 castors
- A5 BioSilver filter
- A6 air intake grille
- A7 air exhaust hose housing
- A8 air intake grille
- A9 power cable
- A10 drainage hose with cap
- A11 remote control compartment
- A12 remote control signal receiver

**Description of the accessories**

- B1 adapter for window bracket
- B2 air exhaust hose
- B3 hose adaptor
- B4 additional window bracket
- B5 window bracket with wing nut
- B6 remote control
- B7 stripping foam



**ELECTRICAL CONNECTION**

Before plugging the appliance into the outlet, check that:

- The outlet's power supply corresponds to the value indicated on the rating label on the back of the appliance.
- The outlet and electrical circuit are adequate for the appliance.
- The outlet is a 3-hole grounded outlet (⏏). If this is not the case, you must choose another outlet. Failure to follow these important safety instructions absolves the manufacturer of all liability.

If it becomes necessary, the power cable must be replaced by a qualified professional only.

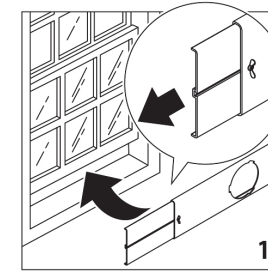
**USE**

The instructions below will enable you to prepare your air conditioner for operation as efficiently as possible. Before use, make sure the air intake and air outlet flap are unobstructed.

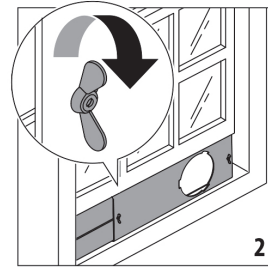
**NOTE:** Accessory type, appearance and quantity may vary depending on the model.

**DOUBLE-HUNG WINDOW**

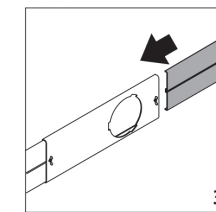
- Place the window bracket (B5) in the window sill, extend the bracket fully within the window frame (fig. 1).



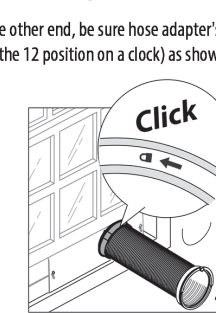
- Fix the bracket by the wing nut (fig. 2). Attach the provided stripping foam (B8) to the top of the window bracket and then lower the window onto the bracket. (Should the win-dow bracket be too large for the window the plastic can be cut with a saw by a qualified professional.)



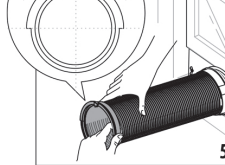
- If the windows are large, use additional window bracket (B4) to cover your window aperture, extending it to the required length, then blocking it with the locking wing nut supplied (fig. 3).



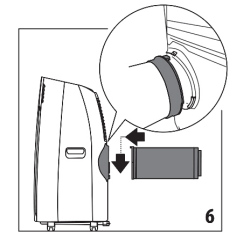
- Insert and lock the accessory for window bracket (B1) already assembled to the air exhaust hose, into the slot of the window bracket (fig. 4).



- At the other end, be sure hose adapter's tab is straight up (like the 12 position on a clock) as shown in fig 5.



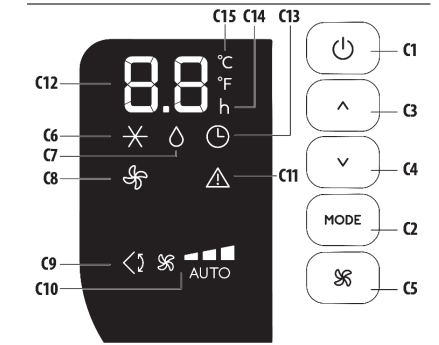
- Attach assembled hose to the back of the air conditioner (fig. 6).



**SLIDING WINDOWS**

- Thanks to the locking wing nut, it's possible to use the window bracket also for sliding windows. Position the hole of the bracket so to allow a correct installation of the exhaust hose.

**OPERATING FROM THE CONTROL PANEL**



**NOTE:** The image shown here is for illustrative purposes only and may be subject to change. The actual descriptions of control panel and their locations may vary, depending on the model.

**DESCRIPTION OF THE CONTROL PANEL (C)**

- C1. ON/STAND-BY (on/off) key
- C2. Function selection key (air conditioning, dehumidifying, fan)
- C3. Increase key
- C4. Decrease key
- C5. Air flow selection key (MIN/MED/MAX/AUTO)
- C6. Air conditioning symbol
- C7. Dehumidifying symbol
- C8. Fan symbol
- C9. Swing symbol
- C10. Air flow indicator
- C11. Alarm symbol
- C12. Set temperature display, programmed on/off time
- C13. Timer symbol
- C14. Timer hour indicator
- C15. Selected temperature scale indicator

**CONTROL PANEL OPERATION**

**TURNING THE APPLIANCE ON AND OFF**

Insert the plug in the socket. Two dashes appear on the display indicating that the appliance is in stand-by.



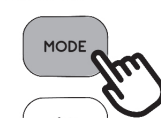
Touch the (C1) key to turn on the appliance. The flap A1 will open after few seconds. When the appliance comes on the last function set before it was shut off is activated.

**Please note:** If start-up is not continued, after a few minutes the display light dims in order to reduce energy consumption. To turn the appliance off, touch the (C1) key and then pull the plug.

**Please note:** Never turn off the air conditioner by simply pulling the plug. Touch the (C1) key in order to put your air conditioner in stand-by and wait a few minutes before pulling the plug. In this manner, the appliance can perform the operating status checks.

**MODES SELECTION**

To select the desired operating mode, touch repeatedly the MODE key (C2) until the desired function is selected.





## ✳ AIR CONDITIONING MODE



This is ideal for hot and humid weather when the room needs to be cooled. This function also helps dehumidify the air.

To correctly set this mode:

- Touch repeatedly the **MODE** key (C2) until the air conditioning ✳ symbol appears. The display will show the desired temperature.
- To change the temperature to be reached, touch the  $\wedge$  (C3) or  $\vee$  (C4) key.

- Select the desired fan speed by touching the  $\mathcal{S}$  (C5) key.

The speeds available are:

- $\mathcal{S}$  **Minimum air flow:** when maximum quiet operation is desired.
- $\mathcal{S}$  **Medium air flow:** when the noise level needs to be low but with a good comfort level.
- $\mathcal{S}$  **Maximum air flow:** for maximum performance.
- $\mathcal{S}$  **Auto:** the appliance automatically chooses the best fan speed based on the temperature selected and the environmental conditions.

## ◊ DEHUMIDIFYING MODE



This is ideal for reducing humidity in the room (spring and autumn, damp rooms, rainy periods, etc). For this type of use, the appliance must be set up as for air conditioning mode. That is, the air exhaust hose (B2) must be fitted to the appliance to allow the humidity to be discharged outside.

To correctly set this mode:

- Touch repeatedly the **MODE** key (C2) until the dehumidifying ◊ symbol appears.
- The appliance will automatically choose the best air flow.

## ✳ FAN MODE



When using this mode, the air exhaust hose (B2) does not need to be attached to the appliance.

To correctly set this mode:

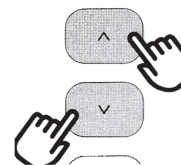
- Touch repeatedly the **MODE** (C2) key until the fan  $\mathcal{S}$  symbol appears.

- Select the desired air flow by pressing  $\mathcal{S}$  button (C5).

The air flows available are:

- $\mathcal{S}$  **Minimum air flow:** when quiet operation is desired.
- $\mathcal{S}$  **Medium air flow:** when the noise level needs to be low but with a good comfort level.
- $\mathcal{S}$  **Maximum air flow:** for maximum performance.

## SELECT THE TEMPERATURE SCALE



The temperature can be displayed in °C or °F. To change the temperature unit of measure touch both the increase  $\wedge$  (C3) or decrease  $\vee$  (C4) keys for about 10 seconds.

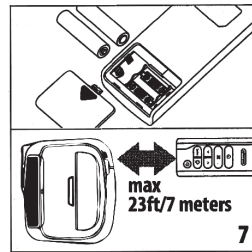
## OPERATING FROM THE REMOTE CONTROL

### INSERTING OR REPLACING THE BATTERIES (NOT SUPPLIED)

- Remove the cover on the rear of the remote control;
- Insert or replace the batteries with two new LR03 "AAA" 1.5V batteries, inserting them correctly (see the directions inside the battery compartment) (fig. 7);
- Replace the cover.

The image shown here is for illustrative purposes only and may be subject to change.

804106485



**Please note:** If the remote control unit is replaced or discarded, the batteries must be removed and disposed of in accordance with current legislation as they are harmful to the environment. Do not mix old and new batteries.

Do not mix alkaline, standard (carbon-zinc) or rechargeable (nickel-cadmium) batteries. Do not dispose of batteries in fire. Batteries may explode or leak. If the remote control is not to be used for a certain length of time, remove the batteries.

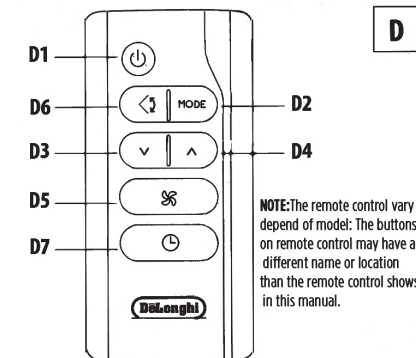
## USING THE REMOTE CONTROL

- Point the remote control at the receiver no more than 23 feet (7 meters) away from the appliance (fig. 7) without obstacles between the remote control and the receiver.
- The remote control must be handled with care. Do not drop it or expose it to direct sunlight or sources of heat.

**Please note:** The remote control can be safely stored in the appropriate compartment (A11).

## DESCRIPTION OF THE REMOTE CONTROL

- D1.** ON/STAND-BY button
- D2.** MODE button
- D3.** Decrease button
- D4.** Increase button
- D5.** Air flow selection button
- D6.** Swing button
- D7.** Timer button



**NOTE:** The remote control vary depend of model. The buttons on remote control may have a different name or location than the remote control shows in this manual.

## TURNING THE APPLIANCE ON/OFF

- Plug into the outlet.
- Press the  $\mathcal{S}$  button (D1) to turn the unit on. When turned on, the air conditioner starts operating in the same mode as when it was turned off.
- To switch the appliance off, press the  $\mathcal{S}$  button (D1).

**Please note:** Never switch the appliance off by removing the plug. Always switch it off by pushing the  $\mathcal{S}$  button and waiting a few minutes before removing the plug. Only in this way will the appliance be able to perform its standard checks.

## SELECTING THE OPERATING MODES

To select the desired operating mode, press repeatedly the **MODE** button (D6) until the desired function is selected. Most of the commands available on the remote control correspond to those on the appliance control panel (C).

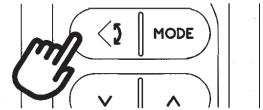
## SELECTING THE TEMPERATURES

In air conditioning mode, press  $\vee$  (D3) and  $\wedge$  (D4) keys to decrease/increase the desired temperature.

## SELECTING THE AIR FLOW

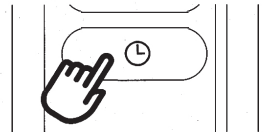
In air conditioning and fan modes, press  $\mathcal{S}$  (D5) button on remote control to increase/decrease the desired air flow.

## SWINGFUNCTION



The swing button (D6) activates and deactivates the swing function. When the internal fan is running, the swing function distributes the air evenly into the room moving the flap forwards and backwards alternatively. If pressed again, the flap will be locked into its current position. **NOTE:** If the internal fan is not running, the swing function will also not operate. In order to avoid damaging the internal mechanisms, the flap must not be moved manually.

## SETTING THE TIMER



The timer allows the delayed start up or shut down of the appliance. This function will prevent wasting electricity by optimizing the operating periods.

### How to program delayed shut down

- While the appliance is on in any operating mode, delayed shut down can be programmed.
- Press the  $\mathcal{S}$  timer button (D7), the timer symbol (C13) and hours (C14) light up.
- Press the  $\vee$  (D3) and  $\wedge$  (D4) buttons until the desired number of hours to shut down appears on the display. A few seconds after the timer is set, the setting is memorized and the display shows the operating mode and the timer symbol stays lit. Once the set time is elapsed, the air conditioner goes into standby. To cancel the timer program, press the  $\mathcal{S}$  timer button (D7) twice. The timer symbol (C13) will go off.

**Note:** Once the timer has been activated, by pressing the timer button only one time, the remaining hours until shut down will be displayed.

### How to program delayed start up

- Plug in the appliance and set to standby.
- Press the  $\mathcal{S}$  timer button (D7), the timer symbol (C13) and hours (C14) light up.
- Press the  $\vee$  (D3) and  $\wedge$  (D4) buttons until the desired number of hours to start up appears. Start up can be programmed at any time in the next 24 hours.

When the set time is elapsed, the appliance will start to operate in the same operating mode that was previously set. To cancel the timer program, press the timer button (D7) twice. The timer symbol (C13) will go off.

**Note:** Once the timer has been activated, by pressing the timer key only one time, the remaining hours to the start up will be displayed.

### Note:

- This equipment has been tested and found to comply with the limits for a Class B digital device, pursuant to part 15 of the FCC Rules. These limits are designed to provide reasonable protection against harmful interference in a residential installation.
- This equipment generates, uses and can radiate radio frequency energy and, if not installed and used in accordance with the instructions, may cause harmful interference to radio communications. However, there is no guarantee that interference will not occur in a particular installation. If this equipment does cause harmful interference to radio or television reception, which can be determined by turning the equipment off and on, the user is encouraged to try to correct the interference by one or more of the following measures:
  - Reorient or relocate the receiving antenna.
  - Increase the separation between the equipment and receiver.
  - Connect the equipment into an outlet on a circuit different from that to which the receiver is connected.
  - Consult the dealer or an experienced radio/TV technician for help.
- Changes or modifications not expressly approved by the party responsible for compliance could void the user's authority to operate the equipment.
- This device complies with Part 15 of the FCC Rules. Operation is subject to the following two conditions: (1) this device may not cause harmful interference, and (2) this device must accept any interference received, including interference that may cause undesired operation.
- This Class B digital apparatus complies with Canadian CAN ICES-3 (B) / NMB-3 (B).

## TIPS FOR CORRECT USE

To ensure optimal results from your air conditioner, follow these recommendations:

- Close the windows and doors where air conditioner will be used. When installing the air conditioner semi-permanently, you should leave a door slightly open (as little as 1/2 inch - 1 cm) to guarantee proper ventilation.
- Never use the appliance in very damp rooms (laundries for example).
- Protect the room from direct exposure to the sun by partially closing curtains and/or blinds to make the appliance much more economical to run.
- Never use the appliance outdoors.
- Make sure there are no heat sources in the room.
- Make sure the air conditioner is standing on a level surface.
- Never rest objects of any kind on the air conditioner.
- Never obstruct the air intake or air outlet flap (see figure below).



do not cover the appliance

## CLEANING

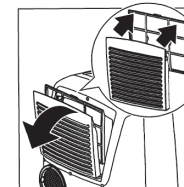
Before cleaning or maintenance, turn the appliance off by using the  $\mathcal{S}$  button, then unplug from the outlet.

### CLEANING THE CABINET

You should clean the appliance with a slightly damp cloth then dry with a dry cloth. For safety reasons, never wash the air conditioner with water. **Attention!** Never use petrol, alcohol or solvents to clean the appliance. Never spray insecticide liquids or similar.

### CLEANING THE BIO SILVER AIR FILTER

If the filter is dirty, air circulation is compromised and the efficiency of the appliance decreases. It is therefore good practice to clean the filter at regular intervals. The frequency depends on the duration and conditions of operation. If the unit is used constantly or systematically, you are recommended to clean the filter once a week. The filter is housed in the intake grille. To clean the filter, remove as shown in fig. 8.



8

Use a vacuum cleaner to remove the dust collected on the filter. If it is very dirty, immerse in warm water and rinse a number of times. The water should never be hotter than 104°F. After washing the filter, allow it to dry completely before repositioning it.

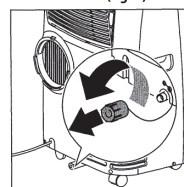
The BioSilver filter helps capture dust and pollen and helps reduce the growth of bacteria and mold on the filter.

### START OF SEASON CHECKS

Make sure the power cable and plug are undamaged and the ground system is sufficient. Follow the installation instructions precisely.

### END OF SEASON OPERATIONS

To drain all water from the circuit, remove the external cap by unscrewing it in the counter clockwise direction and allow the water to drain out into a basin (fig. 9).



9

## TECHNICAL SPECIFICATIONS

Power supply voltage	see rating label
Max. absorbed power during air conditioning	"
Refrigerant	"
Cooling capacity	"

## ONLY FOR SERVICE CENTERS USE

THE WIRING DIAGRAM IS LOCATED INSIDE THE UNIT.

## LIMIT CONDITIONS

Room temperature for air conditioning	61° ± 95°F (16-35 °C)
Maximum relative humidity	80% RH

**Please note:** outside of these conditions, the unit will take longer or may not reach the cooling temperature that is set.

## SELF-DIAGNOSIS

The appliance has a self diagnosis system to identify a number of warning/malfunctions.

Error messages are displayed on the appliance display.

IF ... IS DISPLAYED,	IF ... IS DISPLAYED,	IF ... IS DISPLAYED,	IF ... IS DISPLAYED,	IF ... IS DISPLAYED,
LT	HT	LH	PF	HL
"Low Temperature" (Frost prevention)	"High Temperature"	"Low humidity"	"Probe Failure" (Probe damaged)	"High Level" (Internal trayfull)
..WHAT SHOULD I DO?	..WHAT SHOULD I DO?	..WHAT SHOULD I DO?	..WHAT SHOULD I DO?	..WHAT SHOULD I DO?
The appliance is fitted with a frost protection device to avoid excessive formation of ice. The appliance starts up again automatically when the defrosting process is completed.	The appliance is fitted with an overheating device which in case of operating conditions with excessive room temperature for a long period, will switch the appliance to ventilate only. The appliance will be automatically restored as soon as the temperature will be close to the operating limit conditions.	This message will only be displayed when in Real Feel function, indicating that the room humidity level is extremely low. To resume operation, switch the unit to any other mode other than the Real Feel function.	If this is displayed, contact a service center.	Empty the internal safety tank following the instructions in the section "End of season operations"

## TROUBLESHOOTING

PROBLEM	CAUSE	SOLUTION
The air conditioner does not come on	it is not plugged into the outlet	plug into the outlet
	there is no power	wait for the current to return
	the internal safety device has tripped	call a service center.
The air conditioner works for a short time only	there are bends or kinks in the air exhaust hose	position the air hose correctly, keeping it as short and free of curves as possible to avoid bottlenecks
	something is preventing the air from being discharged	check and remove any obstacles obstructing air discharge
The air conditioner works, but does not cool the room	windows, doors and/or curtains open	close doors, windows and curtains, bearing in mind the "TIPS FOR CORRECT USE" given above
	there are heat sources in the room (oven, hairdryer, etc	minimize heat sources impact by setting on low or unplugging unnecessary sources
	the air exhaust hose is detached from the appliance	fit the air exhaust hose in the housing at the back of the appliance (fig. 1).
	filter clogged	clean or replace the filter as described above
During operation, there is an unpleasant smell in the room	filter clogged or dirty	clean the filter as described above (fig. 8)
The air conditioner does not operate for about three minutes after restarting it	an internal safety device prevents the appliance from being restarted until three minutes have elapsed since it was last turned off	wait. This delay is part of normal operation.
One of the following messages is displayed: LT/HT/LH/PF/HL	the appliance has a self diagnosis system to identify a number of malfunctions.	see the SELF-DIAGNOSIS chapter