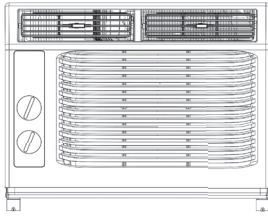


Hi! Let's Get Started.

5K Mechanical Window AC



Please read this manual carefully before operating your unit and retain for future reference.

804109862

IMPORTANT SAFETY INSTRUCTIONS

Before installing and using your air conditioner, please read this owner's manual carefully. Store this manual in a safe place for future reference. Your safety and the safety of others is very important to us. Please pay attention to all safety messages outlined in this owner's manual.

WARNING: To reduce the risk of fire, electrical shock or injury when using your air conditioner, follow the following basic precautions:

ELECTRICAL REQUIREMENTS

The electrical ratings for your air conditioner are listed on the model and serial number label located on the front left side of the unit (when facing the front).

WARNING	Specific electrical requirements are shown in the diagram below. Follow the requirements below for the type of plug on the power supply cord.	
Electrical Shock Hazard	Wiring Requirements	Power Supply Cord
Plug into a grounded 3 prong outlet. Do not remove the ground prong. Do not use an adapter. Do not use an extension cord. Failure to follow these instructions can result in death, fire, or electrical shock.	<ul style="list-style-type: none"> • 115 Volt (103 min - 127 max) • (0-8 amps) • (10 amp time-delay fuse or circuit breaker) • Use on single outlet circuit only 	<p style="text-align: center;"><small>PREFERRED GROUNDING METHOD</small></p> <p style="text-align: center;"><small>Ensure proper ground exists before use.</small></p>

RECOMMENDED GROUND METHOD

For your personal safety, this air conditioner must be grounded. This air conditioner is equipped with a 3 prong power supply cord with a grounded plug. To minimize the possibility of electrical shock, the cord must be plugged into a 3 prong outlet and grounded in accordance with all local codes and ordinances. If a 3 prong outlet is not available, it is the customer's responsibility to have a properly grounded 3 prong outlet installed by a qualified electrician.

What's in the box

APPEARANCE	PART NAME
	Top Rail
	AC Unit
	Filler Panels (with "Left" & "Right" remark)
	Sash Lock
	Lock Frame
	3/8" Screws
	1/2" Screws
	3/4" Screws
	Window Sash Seal
	Foam Top Window Gasket

* Accessory type, appearance and quantity may vary depending on the model.

Step 1: Testing

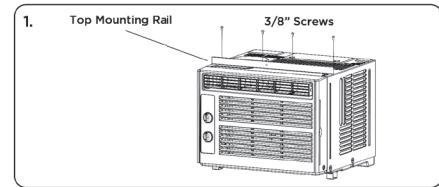
Before you install the AC, let's test it to make sure it made it safely to your home and is and your outlet is proving proper power. Place it on a flat surface, plug it directly into a wall outlet, and turn it on. Next, put the mode to High Cool * and set the temperature to Max Cool 7. After 3 minutes, the AC should be blowing cool air.

Step 2: Installation

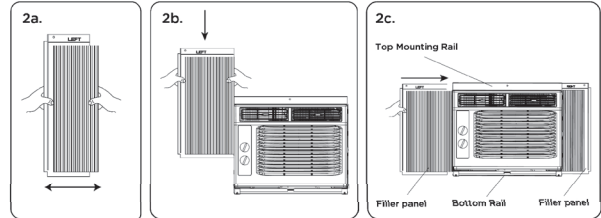
A few quick notes before installing:

- This unit is made to fit inside a standard double-hung window between the sizes of 23" and 36".
- Check the size of your window before installing. The air conditioner can be installed without the accordion panels to fit in a narrower window opening.
- The Lower Sash (the lower part of the window that moves up and down) must allow for 14.5" of vertical clearance when open.
- The electrical outlet must be within reach of the power cord.

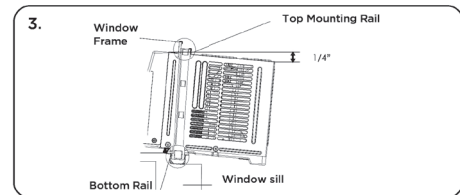
1. Use the included 3/8" screws to fasten the top mounting rail to the unit.



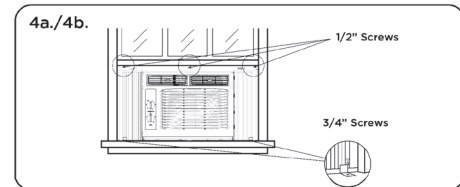
2. Fasten the accordion style window panel expander pieces to the unit. They are marked "Right" and "Left". Pull the leading edge of them to its maximum width (Fig 2a). Then slide the panel expanders into the grooved notches (slide downward) on the sides of the unit (Fig 2b), and make sure they are inserted into the metal rails tightly (Fig 2c).



3. Carefully place the window air conditioner into the window where it is to be installed (2 people are recommended for this step). Close the window securely. The AC unit should be slightly tilted to the outside area to allow water to drain out from the unit.

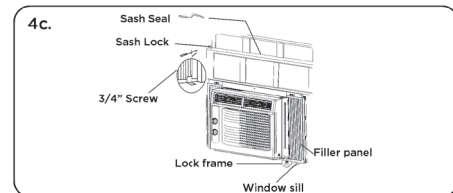


- 4a. Fasten the air conditioner to the window frame, using the included 1/2" screws. Fasten each of the panel extenders (Left and Right). You may have to drill a pilot hole in the window frame to fasten these screws to the window sash.

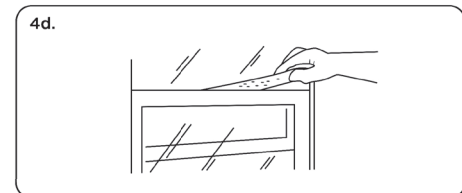


- 4b. Attach the lock frame between the panel extender and the window sill and fasten them together with the included 3/4" locking screw. Repeat for each side.

- 4c. Attach the sash lock between the top of the sliding window and window frame, using of the included 3/4" screw to secure the window closed.



- 4d. To prevent outside air from entering the room, insert the foam top window gasket, cut to the width of the window.



5. Plug the unit into the electrical outlet as specified above in the electrical requirements. Move the control to the COOL mode.

IMPORTANT INFORMATION



Do not drill holes in the product. Drilling holes in the product can cause the air conditioner to not function properly.

* The image shown here is for illustrative purposes only and may be subject to change.

How to Control Your AC

All the basics you need to know to stay cool!

- 1. Power** - Turn on the unit by rotating the MODE dial to the desired setting.
- 2. Cooling Mode** - For maximum cooling, set the MODE dial to ❄️. In HIGH COOL mode, the fan will automatically go to high. This will circulate the air throughout the room.
- 3. Fan Mode** - For fan only modes choose either 🌀, or 🌀. The air conditioner will not cool the room in fan mode.
- 4. Thermostat** - Turn the TEMP dial to set the desired room temperature. For maximum cooling, turn the TEMP dial to "7" (Max Cool).
- 5. Directional Vents** - To direct the air flow, use the horizontal lever to control the horizontal (sideways) motion, and move the air deflector to control the vertical (up/down) direction.
- 6. Minimize Wear and Tear** - To minimize wear and tear, wait at least 3 minutes before changing MODES. This will prevent the compressor from overheating and the circuit breaker from tripping.

Normal Operating Sounds

You may hear a ping noise, caused by the water hitting the condenser on rainy days, or when the humidity is high. This design feature helps remove moisture and increase efficiency. You may hear the thermostat click when the compressor cycles on and off. Water will collect in the base pan on rainy days, or high humidity days. The water may overflow and drip from the unit on the outside. The fan may run, even when the compressor is not on.

FCC CAUTION (FCC ID: 2AJCLTWAC-TYWFS)

This device complies with part 15 of the FCC Rules. Operation is subject to the following two conditions: (1) This device may not cause harmful interference, and (2) this device must accept any interference received, including interference that may cause undesired operation. Any Changes or modifications not expressly approved by the party responsible for compliance could void the user's authority to operate the equipment.

Note: This equipment has been tested and found to comply with the limits for a Class B digital device, pursuant to part 15 of the FCC Rules. These limits are designed to provide reasonable protection against harmful interference in a residential installation. This equipment generates uses and can radiate radio frequency energy and, if not installed and used in accordance with the instructions, may cause harmful interference to radio communications. However, there is no guarantee that interference will not occur in a particular installation. If this equipment does cause harmful interference to try to correct the interference by one or more of the following measures:
 -Reorient or relocate the receiving antenna.
 -Increase the separation between the equipment and receiver.
 -Connect the equipment into an outlet on a circuit different from that to which the receiver is connected.
 -Consult the dealer or an experienced radio/TV technician for help.
 The distance between user and device should be no less than 20cm.

Troubleshooting

Having trouble completing installation? Don't worry, it's usually an easy fix.

PROBLEM	POSSIBLE CAUSES	SOLUTIONS
Air Conditioner will not start	Air conditioner is unplugged	• Make sure the air conditioner plug is pushed completely into the outlet
	Fuse is blown/circuit breaker is tripped	• Check the house fuse/circuit breaker box and replace the fuse or reset the breaker
	Power Failure	• The unit will automatically re-start when power is restored • There is a protective time delay (approx. 3 minutes) to prevent damage to the compressor. For this reason, the unit may not start normal cooling for 3 minutes after it is turned back on.
Air Conditioner does not cool as it should	Current interrupter device is tripped	• Press the RESET button located on the power cord plug • If the RESET button will not stay engaged, discontinue use of the air conditioner and contact a service center.
	Airflow is restricted	• Make sure there are no curtains, blinds, or furniture blocking the front of the air conditioner
	Temperature control may not be set correctly	• Lower the set thermostat temperature
	Air filter is dirty	• Clean the filter.
	Room may be too warm	• Please allow time for the room to cool down after turning on the air conditioner
	Cold air is escaping	• Check for open furnace registers and cold air returns
Air Conditioner is freezing up	Cooling Coils are frozen	• See "Air Conditioner Freezing Up" below
	Ice blocks the air flow and stops the air conditioner from cooling the room	• Set the MODE to HIGH FAN or HIGH COOL and set the thermostat to a higher temperature
Water is dripping outside	Hot and humid weather	• This is normal
Water is dripping inside the room	Air conditioner is not correctly tilted outside	• For proper water drainage, make sure the air conditioner is slightly tilted downward from the front of the unit to the rear
Water collects in the pan	Moisture removed from the air is draining into the base pan	• This is normal for a short period in areas with low humidity and normal for a longer period in areas with high humidity

REFURBISHED PRODUCT LIMITED THIRTY DAY WARRANTY

The **Refurbished Product Service Center** offers the following WARRANTY to the ORIGINAL purchaser of a product which we have refurbished.

This product that has been refurbished is warranted against any electronic or mechanical defects for a period of THIRTY DAYS from the date of the original purchase by the consumer. Since this unit was sold as a refurbished item, the warranty does not apply to any cosmetic appearance items such as scratches. Should a defect occur, the **Refurbished Product Service Center** will repair or, at its option, replace defective unit/parts with new or rebuilt materials without charge for either parts or labor. Replacement unit/parts will be warranted for the remaining portion of the original warranty period.

This warranty does not cover installation or damage from accident, misuse, abuse, improper wiring, incorrect voltage, operating the unit against the instructions in the owner's manual or any product which has been opened, altered, or tampered with.

This warranty does not cover costs for removal and/or installation of the unit for repair. Under no circumstances shall the service center be liable for any special, incidental or consequential damages or for any other expenses incurred by reason of use or sale of this product. This warranty is in lieu of any other warranties expressed or implied warranty of merchantability of fitness for particular use or otherwise.

This warranty gives the consumer specific legal rights and they may also have other rights which vary from State to State. Some States do not follow the exclusion or limitation of incidental or consequential damages, hence the above exclusion and limitations may not apply.

Refurbished Product Service Center
 13225 Marquardt Avenue Santa Fe Springs, CA 90670

WARRANTY REPAIR INFORMATION

If you need service on your unit during the 30 day warranty period; please go to www.ConsumerServiceRefurbish.com or call the Refurbished Product Service Center at 562-946-3531 to obtain the required claim number. Once you obtain your claim number, pack the unit properly (the original carton is ideal for this purpose) along with a copy of your purchase receipt. Send the unit freight prepaid and insured to:

Refurbished Product Service Center,
Att: Customer Service Department 13225 Marquardt Avenue
Santa Fe Springs, CA 90670

Your unit will be promptly exchanged and returned to you. We will refuse to accept delivery of the returned unit unless the assigned claim number appears on the outside of the shipping carton.

Owner's Information
 (Keep for your permanent records)

NAME: _____

ADDRESS: _____

CITY: _____ STATE: _____ ZIP CODE: _____

PHONE: _____ E-MAIL: _____

MODEL: _____ SERIAL NO.: _____

PRINTED IN MEXICO
 Elbrd: J.E. / 2P
 OBPN: XL-211405324
 SC: 14-07-2020
 MODEL: TAW05CMW0N_B



8 0 4 1 0 9 8 6 2

