

IMPORTANT SAFETY INSTRUCTIONS

HOUSEHOLD USE ONLY

⚠ WARNING

TO REDUCE THE RISK OF FIRE, ELECTRIC SHOCK, OR INJURY:

READ ALL THESE INSTRUCTIONS BEFORE USE.

1. This appliance has a polarized plug (one blade is wider than the other). To reduce the risk of electric shock, this plug is intended to fit in a polarized outlet only one way. If the plug does not fit fully in the outlet, reverse the plug. If it still does not fit, contact a qualified electrician. Do not attempt to defeat this safety feature. Unplug or disconnect the appliance from the power supply before servicing.
 2. **DO NOT** operate any unit with a damaged cord or plug.
 3. **DO NOT** run cord under carpeting. **DO NOT** cover cord with throw rugs, runners, or similar coverings. **DO NOT** route cord under furniture or appliances. Keep cord away from high traffic areas where it will not be tripped over.
 4. If the power cord is damaged, it must be replaced by the manufacturer, its service agent, or similarly qualified persons in order to avoid a hazard.
 5. This appliance should only be placed on flat and dry surfaces.
 6. This appliance is not intended for use by anyone (including children) with reduced physical, sensory or mental capabilities, or lack of experience and knowledge, unless they have been given supervision or instruction concerning use of the appliance by a person responsible for their safety.
 7. Children should be supervised to ensure that they **DO NOT** play with the appliance.
 8. Cleaning and user maintenance shall not be made by children without supervision.
 9. Prior to cleaning or other maintenance, the appliance must be unplugged from the electrical outlet.
 10. **DO NOT** handle plug or appliance with wet hands.
 11. **DO NOT** use without filter in place.
 12. Only use Shark® branded filters and accessories.
 13. **DO NOT** damage the power cord:
 - a) **DO NOT** pull or carry appliance by the cord or use the cord as a handle.
 - b) **DO NOT** unplug by pulling on cord. Grasp the plug, not the cord.
 - c) **DO NOT** stand the appliance on the power cord, close a door on the cord, pull the cord around sharp corners, or leave the cord near heated surfaces.
 14. **DO NOT** use with any opening blocked; keep free of dust, lint, hair, and anything that may reduce airflow.
 15. **DO NOT** use if airflow is restricted. If the air paths become blocked, turn the appliance off and unplug from electrical outlet. Remove all obstructions before you plug in and turn on the unit again.
 16. **DO NOT** use if appliance is not working as it should, or has been dropped, damaged, left outdoors, or dropped into water.
 17. **DO NOT** place appliance on unstable surfaces such as chairs or tables.
 18. **DO NOT** use in the following areas:
 - a) Wet or damp surfaces.
 - b) Outdoor areas.
 - c) Spaces that are enclosed and may contain explosive or toxic fumes or vapors (lighter fluid, gasoline, kerosene, paint, paint thinners, mothproofing substances, or flammable dust).
 19. Turn off all controls before plugging in or unplugging the appliance.
 20. Unplug from electrical outlet when not in use and before any maintenance or cleaning.
 21. Hand wash exterior/hard plastic/non-electronic parts with water only. Do not immerse. Cleaning with chemicals could damage the unit.
 22. Make sure filter is in place after routine maintenance.
 23. Not suitable for use with solid-state speed controls.
- 24. ODOR NEUTRALIZER TECHNOLOGY**
- a) Observe the following when interacting with the Odor Neutralizer Technology cartridge.
DO NOT attempt to disassemble Odor Neutralizer Technology cartridge.

- b) Avoid direct contact with the fragrance pod in the cartridge.
- c) **DO NOT** directly inhale from the Odor Neutralizer Technology cartridge.
- d) Keep away from children and pets.
- e) Keep away from heat, sparks, and open flame.
- f) **DO NOT** place in direct sunlight.
- g) Avoid contact with fabrics and finished surfaces.

25. FRAGRANCE CARTRIDGE FIRST AID

- a) Eye contact: Remove contact lenses if present. Rinse continuously with water for several minutes.
 - b) Skin contact: Wash hands thoroughly after handling. If irritation or rash develops, seek medical advice/attention.
 - c) Inhalation: Move person to fresh air if they are experiencing any respiratory symptoms. If symptoms persist, seek medical advice/attention.
 - d) Ingestion: **DO NOT** induce vomiting. Seek medical advice/attention.
- 26. Dispose of batteries properly. Keep batteries away from children at all times. Even used batteries can cause injury.**

⚠ WARNING: Chemical Burn Hazard. Keep batteries away from children.

This product contains a lithium button/coin cell battery. If a new or used lithium button/coin cell battery is swallowed or enters the body, it can cause severe internal burns and can lead to death in as little as 2 hours. When not changing batteries, keep the battery compartment completely closed. If the battery compartment does not close securely, stop using the product, remove the batteries, and keep them away from children. If you think batteries might have been swallowed or placed inside any part of the body, seek immediate medical attention.

READ AND SAVE THESE INSTRUCTIONS

REFURBISHED PRODUCT LIMITED NINETY DAYS WARRANTY

The **Refurbished Product Service Center** offers the following WARRANTY to the ORIGINAL purchaser of a product which we have refurbished.

This product that has been refurbished is warranted against any electronic or mechanical defects for a period of NINETY DAYS from the date of the original purchase by the consumer. Since this unit was sold as a refurbished item, the warranty does not apply to any cosmetic appearance items such as scratches. Should a defect occur, the **Refurbished Product Service Center** will repair or, at its option, replace defective unit/parts with new or rebuilt materials without charge for either parts or labor. Replacement unit/parts will be warranted for the remaining portion of the original warranty period.

This warranty does not cover installation or damage from accident, misuse, abuse, improper wiring, incorrect voltage, operating the unit against the instructions in the owner's manual or any product which has been opened, altered, or tampered with.

This warranty does not cover costs for removal and/or installation of the unit for repair. Under no circumstances shall the service center be liable for any special, incidental or consequential damages or for any other expenses incurred by reason of use or sale of this product. This warranty is in lieu of any other warranties expressed or implied warranty of merchantability of fitness for particular use or otherwise.

This warranty gives the consumer specific legal rights and they may also have other rights which vary from State to State. Some States do not follow the exclusion or limitation of incidental or consequential damages, hence the above exclusion and limitations may not apply.

Refurbished Product Service Center

9043 Siempre Viva Rd Suite 110/120, San Diego CA, 92154

WARRANTY REPAIR INFORMATION

If you need service on your unit and this product requires repair during the 90 days warranty period; please go to www.ConsumerServiceRefurbish.com or call the **Refurbished Product Service Center** at 562-946-3531 to obtain the required return authorization (RA) number. Pack the unit properly (the original carton is ideal for this purpose) along with a copy of your purchase receipt and a letter describing the problem. Send the unit freight prepaid and insured to:

Refurbished Product Service Center,

At: 9043 Siempre Viva Rd Suite 110/120, San Diego CA, 92154

Your unit will be promptly repaired and returned to you. We will refuse to accept delivery of the returned unit unless the assigned RA number appears on the outside of the shipping carton.

Owner's Information

(Keep for your permanent records)

NAME: _____

ADDRESS: _____

CITY: _____ STATE: _____ ZIP CODE: _____

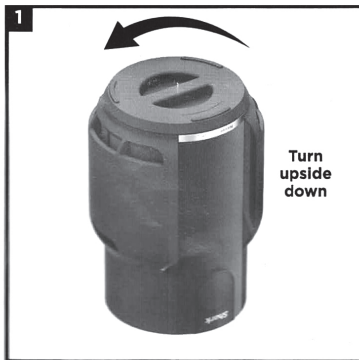
PHONE: _____ E-MAIL: _____

MODEL: _____ SERIAL NO.: _____

Please be sure to read and save the warnings on other side prior to using your air purifier.

QUICK START GUIDE

SETTING UP YOUR AIR PURIFIER



1. **DO NOT** plug in the air purifier. First, carefully turn the air purifier upside down and place it on a level floor surface. Rotate the filter door counterclockwise to the unlocked position to access the HEPA filter.



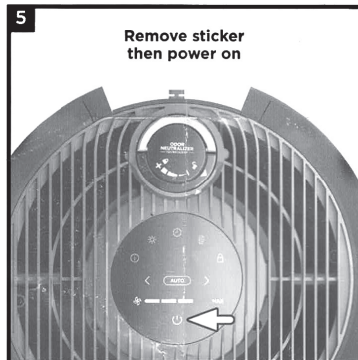
2. Take the HEPA filter out of its plastic packaging. Reinstall the HEPA filter in either orientation.



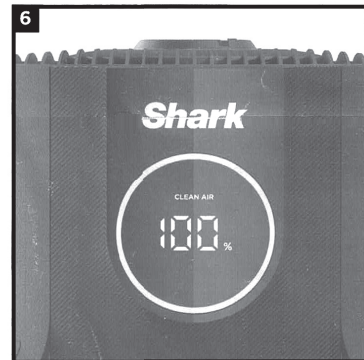
3. With the HEPA filter reinstalled, twist the filter door clockwise until it clicks into place.



4. Set up the air purifier on a flat, level, floor surface, at least 3 inches (8 cm) away from walls and objects. If included with your HP150 series air purifier, locate the Odor Neutralizer Technology cartridge and follow the instructions for how to insert it into the product.



5. Carefully remove the yellow sticker on the top of the product to access the control panel. Plug the air purifier into an electrical outlet and press the power button on the top control panel.



6. When the air purifier power is on, it will begin to analyze the air quality, indicated by the rotating lights. After a few seconds, the air purifier will display the current air quality. See below for more information.

UNDERSTANDING YOUR AIR QUALITY

On the front display, the color of the ring tells you about your air quality.



TRY THESE TIPS TO ENSURE CLEAN AIR CONFIDENCE.

- **Run on Auto Mode**—Fan speeds will adjust automatically. As air quality decreases, the fan speed will increase.
- **Maintain Mesh Dust Filters**—When the red ring on the front display pulses, it's time to check and clean both mesh dust filters to help keep your air purifier working optimally for longer.
- **Optimize Performance in Eco Mode**—After 100% clean air status is achieved for 5 minutes in Auto Mode, your air purifier will enter Eco Mode. The HEPA filter life will be optimized.

Accessory type and quantity may vary depending on the model.

The image shown here is for illustrative purposes only and may be subject to change.

PRINTED IN MEXICO / SC: 11-15-2024_2P / Elbrd: J.E.

SHNMDL: HP152_B / OBPN: HP150Series_W5_QSG_MP_Mv2_230913

814100311

