




Shark

Shark Air Purifier 3-in-1

OWNER'S GUIDE

| | |
|---|--|
|  | Read and review instructions for operation and use. |
|  | Indicates the presence of a hazard that can cause personal injury, death, or substantial property damage if the warning included with this symbol is ignored. |
|  | For indoor and household use only. |

IMPORTANT SAFETY INSTRUCTIONS

When using electrical appliances, basic safety precautions should always be followed, including the following:
HOUSEHOLD USE ONLY

814100001

WARNING

1. Read all instructions before use.
2. This appliance has a polarized plug (one blade is wider than the other). To reduce the risk of electric shock, this plug is intended to fit in a polarized outlet only one way. If the plug does not fit fully in the outlet, reverse the plug. If it still does not fit, contact a qualified electrician. Do not attempt to defeat this safety feature. Unplug or disconnect the appliance from the power supply before servicing.
3. DO NOT operate any appliance with a damaged cord or plug. Discard appliance or call a Service center for examination and/or repair. DO NOT run cord under carpeting. DO NOT cover cord with throw rugs, runners, or similar coverings. DO NOT route cord under furniture or appliances. Keep cord away from high traffic areas and place cord where it will not be tripped over.
4. If the power cord is damaged, it must be replaced by the manufacturer, its service agent, or similarly qualified persons in order to avoid a hazard.
5. This appliance is not intended for use by anyone (including children) with reduced physical, sensory or mental capabilities, or lack of experience and knowledge, unless they have been given supervision or instruction concerning use of the appliance by a person responsible for their safety.
6. Children should be supervised to ensure that they DO NOT play with the appliance.
7. Cleaning and user maintenance shall not be made by children without supervision.
8. Prior to cleaning or other maintenance, the appliance must be unplugged from the electrical outlet.
9. DO NOT handle plug or appliance with wet hands.
10. DO NOT use without filter in place.
11. Only use Shark® branded filters and accessories.
12. DO NOT damage the power cord:
 - a. DO NOT pull or carry appliance by the cord or use the cord as a handle.
 - b. DO NOT unplug by pulling on cord. Grasp the plug, not the cord.
 - c. DO NOT stand the appliance on the power cord, close a door on the cord, pull the cord around sharp corners, or leave the cord near heated surfaces.
13. DO NOT use with any opening blocked; keep free of dust, lint, hair, and anything that may reduce airflow.
14. DO NOT use if airflow is restricted. If the air paths become blocked, turn the appliance off and unplug from electrical outlet. Remove all obstructions before you plug in and turn on the unit again.
15. DO NOT use if appliance is not working as it should, or has been dropped, damaged, left outdoors, or dropped into water.
16. DO NOT place appliance on unstable surfaces such as chairs or other furniture.
17. DO NOT use in the following areas:
 - a. Wet or damp surfaces
 - b. Outdoor areas
 - c. Spaces that are enclosed and may contain explosive or toxic fumes or vapors (lighter fluid, gasoline, kerosene, paint, paint thinners, moth proofing substances, or flammable dust)

18. Turn off all controls before unplugging the appliance.
19. Unplug from electrical outlet when not in use and before any maintenance or cleaning.
20. Hand wash with soapy water only. Washing with cleaning chemicals could damage the unit.
21. Make sure filter is in place after routine maintenance.
22. Not suitable for use with solid-state speed controls.

IMPORTANT INSTRUCTIONS

23. This heater is hot when in use. To avoid burns, do not let bare skin touch hot surfaces. If provided, use handles when moving this heater. Keep combustible materials, such as furniture, pillows, bedding, papers, clothes, and curtains at least 3 feet from the front of the heater and keep them away from the sides and rear.
24. Extreme caution is necessary when any heater is used by or near children or invalids and whenever the heater is left operating and unattended.
25. This heater is not intended for use in bathrooms, laundry areas and similar high moisture locations. Never locate heater where it may fall into a bathtub or other water container.
26. Do not insert or allow foreign objects to enter any ventilation or exhaust opening as this may cause an electric shock or fire or damage the heater.
27. To prevent a possible fire, do not block air intakes or exhaust in any manner. Do not use on soft surfaces, like a bed, where openings may become blocked.
28. A heater has hot and arcing or sparking parts inside. Do not use it in areas where gasoline, paint, or flammable liquids are used or stored.
29. Use this heater only as described in this manual. Any other use not recommended by the manufacturer may cause fire, electric shock, or injury to persons.
30. Always plug heaters directly into a wall outlet/receptacle. Never use with an extension cord or relocatable power tap (outlet/power strip).

WARNING: LITHIUM BATTERY

31. Dispose of coin cell batteries according to local regulations. Keep batteries away from children at all times. Even used batteries can cause injury. Chemical Burn Hazard. Keep batteries away from children. This product contains a lithium button/coin cell battery. If a new or used lithium button/coin cell battery is swallowed or enters the body, it can cause severe internal burns and can lead to death in as little as 2 hours. After changing batteries, always completely close and secure the battery compartment. If the battery compartment does not close securely, stop using the product, remove the battery, and keep it away from children. If you think battery might have been swallowed or placed inside any part of the body, seek immediate medical attention.

SAVE THESE INSTRUCTIONS

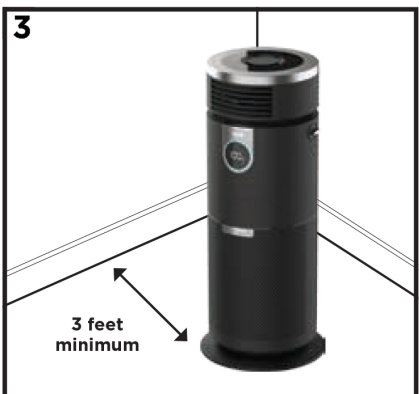
SETTING UP YOUR AIR PURIFIER



1. You must set up the filter before operating. First, remove the filter cover and filter from the back of the air purifier. Then, take the filter out of its sealed plastic packaging.



2. Slide filter back into the air purifier and replace the filter cover. Insert the tabs on the bottom of the cover into the slots. Press the top and sides of the cover until it clicks into place.



3. Set up the air purifier up at least 3 feet (0.9m) from the wall and any furnishings. Plug it in and power on.

NOTE: Accessories may vary depending on the model. Illustrations may differ from actual product. We are constantly striving to improve our products; therefore the specifications contained herein are subject to change without notice.

CHANGING MODES


PURIFIED FAN

1. For purified **FAN** mode, make sure the dial is pointing to the Fan icon. In **FAN** mode, purified air will be directed out of the front.



Adjust the fan speed.

PURIFIED HEAT

2. To activate **HEAT** mode, make sure the dial is pointing to the Heat icon. Then press the  icon on the remote. Heated, purified air will be directed out of the front.



Set target temp or activate HI mode.
You may also adjust the fan speed in this mode.

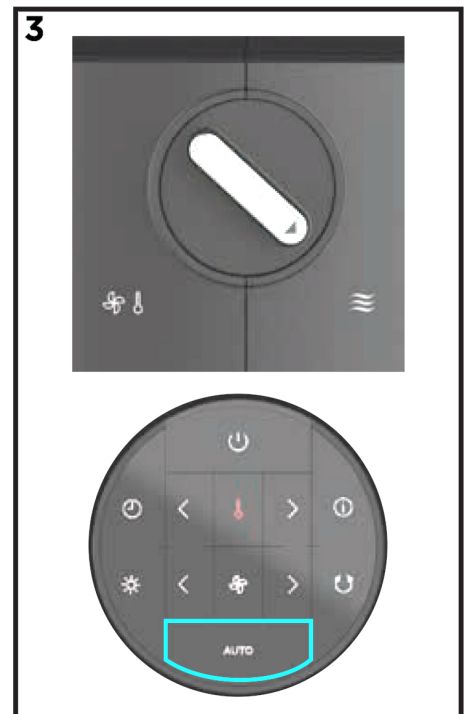
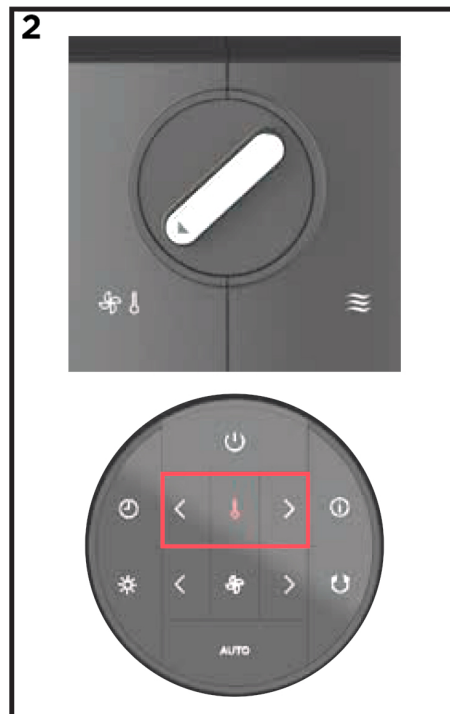
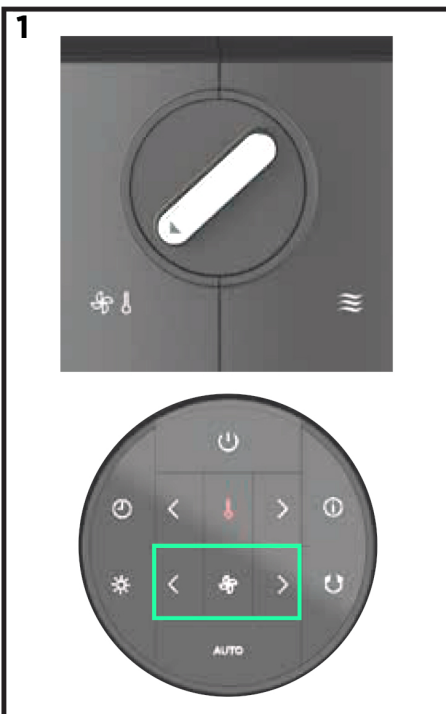
PURIFIED AIR

3. For **PURIFIED AIR** mode, make sure the dial is pointing to the Purifier icon. Purified air will be diffused out of the back.

While the air will be purified in all modes, this mode boosts cleaning power without the breeze of a fan.

AUTO

AUTO mode – automatically adjusts the purification power based on the air quality. Or manually adjust the fan speed using the fan arrows.



Illustrations may differ from actual product without notice.