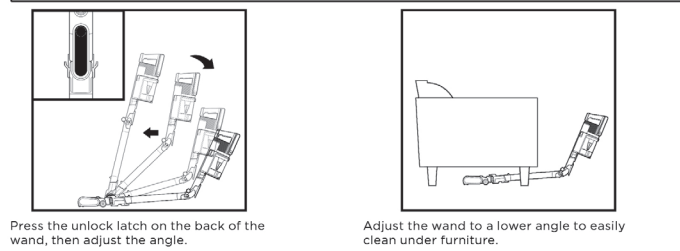




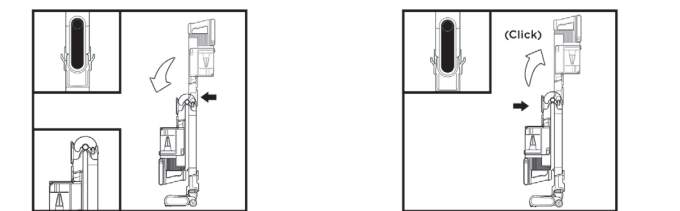
## USING THE MULTIFLEX® WAND



Press the unlock latch on the back of the wand, then adjust the angle.

Adjust the wand to a lower angle to easily clean under furniture.

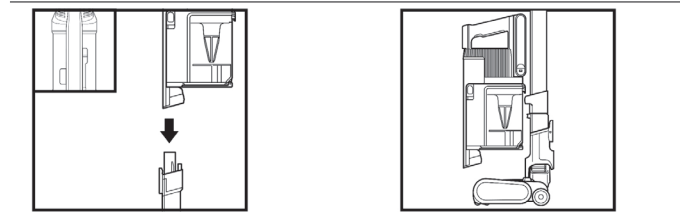
## MULTIFLEX STORAGE



To put the vacuum in storage mode, press the unlock latch while folding the handheld vacuum forward.

To take the vacuum out of storage mode, press the unlock latch and lift up the handheld vacuum until the wand clicks and locks into place.

## ONBOARD STORAGE

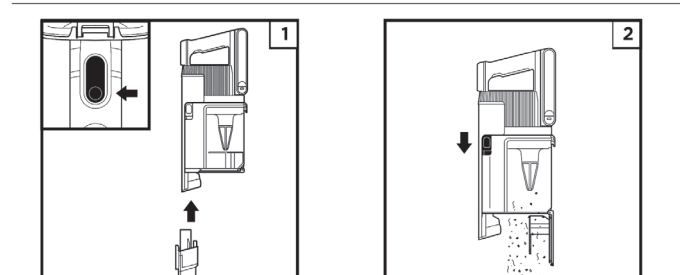


Press the Wand Release button at the top of the wand to detach the handheld vacuum.

Hang the handheld vacuum from the storage hook on the wand.

## MAINTAINING YOUR VACUUM

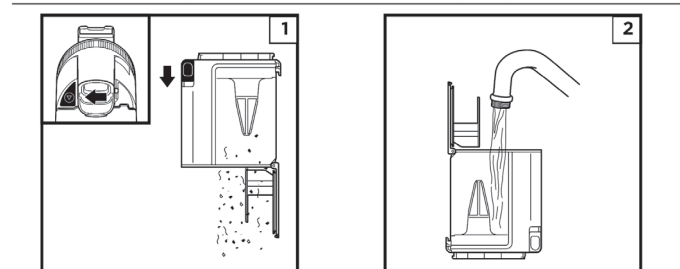
### EMPTYING THE DUST CUP



Press the wand release button to detach the handheld vacuum from the wand.

To empty the **Dust Cup** while it is attached to the handheld vacuum, position the dust cup over a trash receptacle and slide the **CleanTouch™ Dirt Ejector** slider forward.

### REMOVING AND CLEANING THE DUST CUP



To remove the dust cup from the handheld vacuum, press the **CleanTouch Dust Cup Release** button near the handheld vacuum nozzle. Tilt the dust cup and lift off to remove. To empty dust and debris, hold the dust cup over the trash receptacle, then slide the CleanTouch Dirt Ejector slider forward.

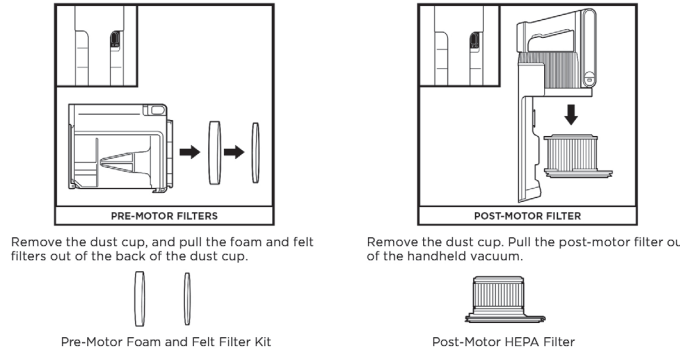
To clean the interior of the dust cup, rinse it with water. Place it on its side with the lid open to air-dry for at least 48 hours before reinstalling.

### CLEANING THE FILTERS

Regularly rinse and replace the filters to maintain your vacuum's suction power and to maximize the effectiveness of odor neutralization.

To clean filters, rinse them with water only. **Allow all filters to air-dry completely up to 48 hours before reinstalling to prevent liquid from being drawn into electric parts.** Clean the pre-motor filters at least once a month and post-motor HEPA filter at least once a year. Tap off loose dirt between washes when needed. More frequent cleaning may sometimes be necessary with heavy use.

**IMPORTANT: DO NOT** use soap when cleaning the filters. Use water only. The vacuum will not have suction if the post-motor HEPA filter is not installed. Ensure that all filters are installed before using.



Remove the dust cup, and pull the foam and felt filters out of the back of the dust cup.

Remove the dust cup. Pull the post-motor filter out of the handheld vacuum.

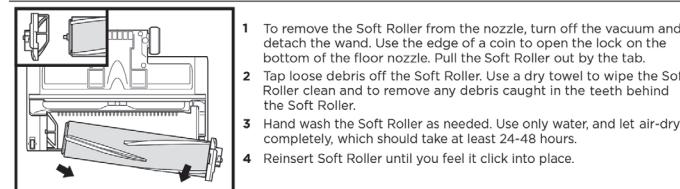
Pre-Motor Foam and Felt Filter Kit

Post-Motor HEPA Filter

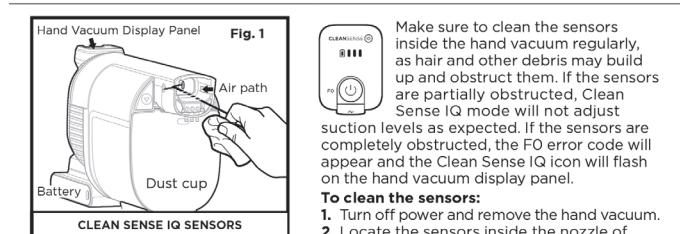
### FLOOR NOZZLE

If any hair is wrapped around the brushrolls, continue cleaning using the Carpet setting on a bare floor surface, a low-pile carpet, or a small area rug. If some fibers remain wrapped around the brushrolls after continued use, carefully remove them. If you run over a hard or sharp object or notice a change in noise while vacuuming, check the floor nozzle for blockages. (See the Checking for Blockages in the Floor Nozzle section.)

### CLEANING SOFT ROLLER



### CLEANING THE SENSORS

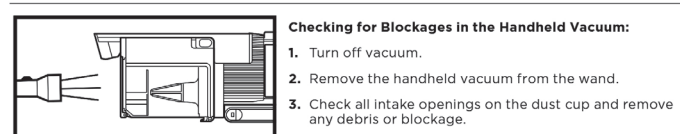


Make sure to clean the sensors inside the hand vacuum regularly, as hair and other debris may build up and obstruct them. If the sensors are partially obstructed, Clean Sense IQ mode will not adjust suction levels as expected. If the sensors are completely obstructed, the FO error code will appear and the Clean Sense IQ icon will flash on the hand vacuum display panel.

#### To clean the sensors:

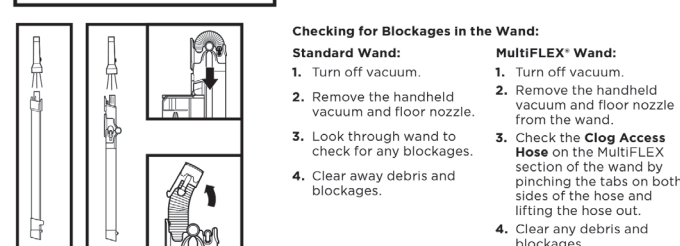
1. Turn off power and remove the hand vacuum.
2. Locate the sensors inside the nozzle of the hand vacuum. The sensors are on the interior walls of the nozzle, about 3 inches down the air path, aligned with the IQ logos (Fig.2) on the exterior.
3. Gently wipe the sensors with a microfiber cloth and remove all hair and debris.
4. Turn on power and verify that the unit is functioning normally.

### CHECKING FOR BLOCKAGES



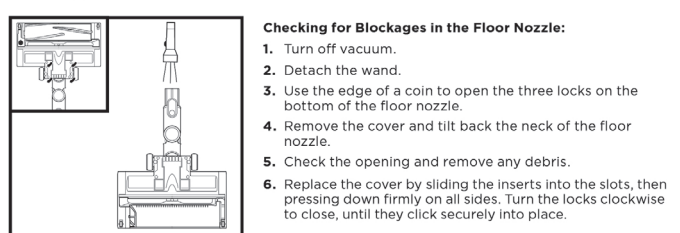
#### Checking for Blockages in the Handheld Vacuum:

1. Turn off vacuum.
2. Remove the handheld vacuum from the wand.
3. Check all intake openings on the dust cup and remove any debris or blockage.



#### Checking for Blockages in the Wand:

- Standard Wand:**
1. Turn off vacuum.
  2. Remove the handheld vacuum and floor nozzle.
  3. Look through wand to check for any blockages.
  4. Clear away debris and blockages.
- Multiflex® Wand:**
1. Turn off vacuum.
  2. Remove the handheld vacuum and floor nozzle from the wand.
  3. Check the **Clog Access Hose** on the Multiflex section of the wand by pinching the tabs on both sides of the hose and lifting the hose out.
  4. Clear any debris and blockages.



#### Checking for Blockages in the Floor Nozzle:

1. Turn off vacuum.
2. Detach the wand.
3. Use the edge of a coin to open the three locks on the bottom of the floor nozzle.
4. Remove the cover and tilt back the neck of the floor nozzle.
5. Check the opening and remove any debris.
6. Replace the cover by sliding the inserts into the slots, then pressing down firmly on all sides. Turn the locks clockwise to close, until they click securely into place.

## TROUBLESHOOTING GUIDE

**WARNING: To reduce the risk of shock and unintended operation, turn off power and remove the Lithium-Ion Power Pack battery before servicing.**

Vacuum is not picking up debris. No suction or light suction. Filter icon on handheld vacuum control panel is red. (Refer to Checking for Blockages section for more information.)

- Check filters to see if they need cleaning. Follow instructions for rinsing and completely air-drying the filters before reinserting in the vacuum.
- Dust cup may be full; empty dust cup.
- Check floor nozzle for blockages; clear blockages if required.
- Remove any string, carpet fibers, or hair that may be wrapped around the brushrolls.
- Check clog access hose in wand for any blockages and clear any debris.
- Check connectors between handheld, wand, and floor nozzle for debris. Remove any dust or material in the connectors.
- If the issue persists, please contact a Service Center.

#### Vacuum lifts area rugs.

- Make sure you are not engaging Boost mode as this can be too much suction for lighter rugs. Take care when vacuuming area rugs or rugs with delicately sewn edges.
- Turn off the unit to disengage the brushrolls and press the power button to restart.

#### Brushrolls do not spin.

- Immediately turn off the vacuum. Remove any blockages before turning the vacuum back on. Make sure the handheld vacuum is tilted back far enough for the brushrolls to engage. If the brushrolls still do not spin, please contact a Service center.

- If the floor nozzle has headlights and they are not illuminated, there is a connection issue between the handheld vacuum, wand, and nozzle. Try disconnecting and reattaching the pieces. If the headlights still do not illuminate, please contact a Service center.

#### Vacuum turns off on its own.

There are several possible reasons for the vacuum turning off on its own, including blockages, battery issues, and overheating. If vacuum turns off on its own, perform the following steps:

1. Turn on the vacuum and check the battery indicator lights located on the handheld vacuum. If recharging is needed, make sure power is turned off before connecting to the charger.
2. Empty dust cup and clean filters (see Emptying the Dust Cup and Cleaning the Filters sections).
3. Check wand, accessories, and inlet openings and remove any blockages.
4. Allow unit and battery to cool for at least 45 minutes, until they return to room temperature.
5. Press power button to restart the vacuum. Make sure the charger is not plugged into the port on the handheld vacuum.

#### Vacuum is emitting air that smells bad.

Dust cup may be full; empty dust cup. Empty dust cup after each use for optimal odor neutralizer technology performance.

Check filters to see if they need cleaning. Follow instructions for rinsing and air-drying the filters before reinstalling them.

Check to make sure odor cartridge is installed in the dial and the dial is installed in the nozzle.

Check the odor neutralizer technology dial on the nozzle to see what setting is enabled.

If odor neutralizer technology dial is at any setting from Low to High and the cartridge has been installed for 6 months or longer, consider replacing it.

If the odor cartridge is still emitting a scent but you dislike it, consider turning the intensity down, or reinstall the dial in the nozzle without the cartridge.

If the odor neutralizer technology cartridge is not emitting a scent, consider replacing it.

For all other issues, please call a Service center.

Fault		Error code display on	
Motor	Motor No Start	All white LEDs, 1 green, and 1 red are flashing on hand vacuum display.	White LEDs Green LED Red LED
	Motor Overheat	All white LEDs and 1 green are flashing on hand vacuum display.	White LEDs Green LED
	Motor Overcurrent	All white LEDs and 1 red are flashing on hand vacuum display.	White LEDs Red LED
	Motor Short	All white LEDs are flashing on hand vacuum display.	White LEDs
	Motor Overspeed	State of charge and red boost icon are flashing on hand vacuum display.	White LEDs Red LED
	System Comm Error	Clean Sense IQ, ECO, and Boost icons are all flashing on hand vacuum display.	White LEDs Green LED Red LED
Nozzle	Clean Sense IQ Sensor Blockage	The FO code and Clean Sense IQ icon are flashing on the hand vacuum display.	White LEDs
	Nozzle Overheat	Clean Sense IQ and ECO icons are flashing on hand vacuum display.	White LED Green LED
	Nozzle Short	Clean Sense IQ and Boost icons are flashing on hand vacuum display.	White LED Red LED

#### NOTE:

In order to ensure the highest possible standard for refurbished items, all units are thoroughly inspected as part of the process.

For this item, water may be used during the refurbishing process and so; you may notice some condensation in the water reservoir.

It is recommended to rinse the water reservoir with fresh water prior to its first use.

#### PLEASE READ CAREFULLY AND KEEP FOR FUTURE REFERENCE.

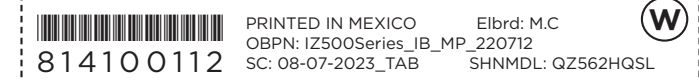
This Owner's Guide is designed to help you get a complete understanding of your new Shark® Cordless Pro with PowerFins™ Plus and Odor Neutralizer Technology.

SharkNinja Operating LLC

Illustrations may differ from actual product. We are constantly striving to improve our products; therefore the specifications contained herein are subject to change without notice.

This product may be covered by one or more U.S. patents.

© 2022 SharkNinja Operating LLC. MULTIFLEX and SHARK are registered trademarks of SharkNinja Operating LLC. CLEAN TOUCH and POWERFINS are trademarks of SharkNinja Operating LLC.

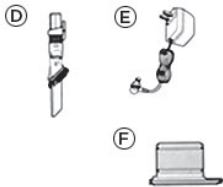


Please be sure to read the enclosed Shark® Owner's Guide prior to using your unit.

## QUICK START GUIDE

### WHAT'S INSIDE

- (A) Handheld Vacuum
- (B) Motorized Floor Nozzle
- (C) Wand with Storage Clip
- (D) Duster Crevice Tool
- (E) Li-Ion Charger
- (F) HEPA Post-Motor Filter (Pre-Installed)






Accessories may vary depending on the model.

### ASSEMBLY

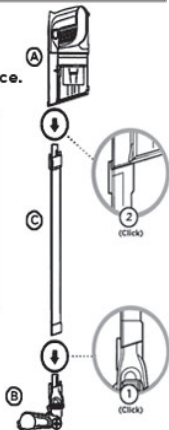
1. Insert Wand into Floor Nozzle.
2. Insert Handheld Vacuum into wand.

For proper operation, ensure all components are completely connected and clicked into place.

SUCTION POWER MODES		
	<b>SUCTION MODE DISPLAY LIGHTS</b>	<b>ECO Mode</b> Maximize runtime. Saves battery power
	 ECO	<b>Clean Sense IQ Mode</b> Automatically adjusts power for dirt level, Best used on carpet AND hard floor.
	 Boost	<b>Maximize suction</b> Uses the most battery power.

**NOTE:** The Lithium-ion Power Pack battery comes partially charged. Charge full before first use. Then run the battery down until it is completely out of power. This will condition the battery so the LED indicators will work properly.

The image shown here is for illustrative purposes only and may be subject to change.



804006721C

Printed in Mexico / Sc: 08-30-2024 / Obpn: N/A  
0.5P / Elabrd: J.E. / Shnmdl: IZ560H\_B